



PRODUCTS FOR **STRUCTURAL STRENGTHENING**

- Primer
- Epoxy Adhesives
- Saturants
- Carbon Fiber Fabrics
- Glass Fiber Fabrics
- Laminates

- Structural-Strengthening Cords
- Corrosion Protection
- Repair Epoxies
- Concrete Repair Mortars
- Coatings and Sealers

PRODUCT LINES OF NORTH AMERICA

 FLOOR COVERING INSTALLATION SYSTEMS

 CONCRETE RESTORATION SYSTEMS

 PRODUCTS FOR WOOD FLOORING

 WATERPROOFING SYSTEMS

 ADMIXTURES FOR CONCRETE

 PRODUCTS FOR UNDERGROUND CONSTRUCTION (UTT)

 PRODUCTS FOR SPORTS FLOORING

 TILE & STONE INSTALLATION SYSTEMS

 PRODUCTS FOR STRUCTURAL STRENGTHENING

 CEMENTITIOUS AND RESIN FLOORING SYSTEMS*

 PRODUCTS FOR THE MARINE INDUSTRY**

 CEMENT ADDITIVES

* Canada & Puerto Rico only ** USA & Puerto Rico only

TABLE OF CONTENTS

PRODUCTS FOR
STRUCTURAL
STRENGTHENING



Introduction..... 2-3

Technology Logos Index..... 2

PRODUCT INFORMATION

Primer

MapeWrap® Primer 1..... 4

Epoxy Adhesives

MapeWrap 11..... 4

MapeWrap 12..... 4

Saturants

MapeWrap 21..... 5

MapeWrap 21 TG..... 5

MapeWrap 31..... 5

MapeWrap 31 T..... 6

Carbon Fiber Fabrics

MapeWrap C Uni-Ax 300..... 6

MapeWrap C Uni-Ax 600..... 6

MapeWrap C Bi-Ax..... 7

Glass Fiber Fabrics

MapeWrap G Bi-Ax..... 7

MapeWrap G Uni-Ax..... 7

Laminates

Carboplate® E 170..... 8

Maperod® C..... 8

Maperod G..... 8

Structural-Strengthening Cords

MapeWrap C Fiocco..... 8

MapeWrap G Fiocco..... 8

Corrosion Protection

Mapecer™ 1K..... 9

Planibond® 3C..... 9

Mapeshield™ I..... 9

Repair Epoxies

Planibond AE..... 10

Planibond AE Fast..... 10

Epojet™..... 10

Concrete Repair Mortars

Planitop® X..... 11

Planitop XS..... 11

Planitop 12 SR..... 11

Planitop 15..... 12

Coatings and Sealers

Mapelastic®..... 12

Elastocolor® Texture..... 12

Elastocolor Primer AR..... 13

Elastocolor Primer WB..... 13

Elastocolor Flex..... 13

Elastocolor Coat..... 14





A WORLDWIDE LEADER

Originally established in 1937, today MAPEI is a privately owned global corporation headquartered in Milan, Italy, with 89 subsidiaries including 81 plants in 36 countries. The company specializes in manufacturing chemical products for building, including waterproofing products, specialty mortars and admixtures for concrete, products to restore historic buildings, and decorative and protective coatings for concrete surfaces. In addition, MAPEI is the world leader in the manufacturing of mortars, grouts, adhesives and complementary products for installing all types of floor and wall coverings. MAPEI Corporation, the division responsible for supporting the North American markets, is based in Deerfield Beach, Florida, and employs over 1,325 team members – ranging from Manufacturing and R&D to Technical Services and Sales. The Canadian subsidiary MAPEI Inc. supports those efforts with about 350 additional employees.





SUPERIOR PRODUCTS

A Complete Range of Products

MAPEI produces the most innovative products for the construction market. More than 5,500 products globally (adhesives, sealants, mortars, admixtures, latex, etc.) are manufactured in MAPEI's plants, which produce the world's most complete range of building products. Diversified, high-quality chemical products – from powdered adhesives, to liquid and paste products, to polymers – are created to meet the needs of more than 66,000 customers around the world.

Quality Control

MAPEI is an ISO 9001-2000 certified company. Its products are produced according to exacting standards, strictly adhering to process and procedural guidelines with documented compliance. This rigid production format is vigilantly followed to ensure that every product is produced uniformly from batch to batch.



PROFESSIONAL SUPPORT NETWORK

Knowledgeable Sales Force

MAPEI offers the largest, most highly trained sales force within the industry to serve your needs for product application/installation recommendations. Its sales representatives are focused on supporting you with product knowledge, product demonstrations, product information, marketing support materials and other relevant tools to help you generate sales.

Technical Expertise

An in-house Technical Services Call Center responds to customers' telephone inquiries with answers to installation challenges in real time. In addition, MAPEI can offer field support for job startups, product training and on-site problem resolution.



Customer Service Plus

MAPEI's standards for customer service are best-in-class. Our leadership includes such service innovations as:

- Customer-friendly, efficient processes
- One-call resolution
- Employee commitment to effective customer dialog



TECHNOLOGY LOGOS INDEX

Corrosion Inhibitor Enhanced products feature proprietary additives that fortify the passivation layer on embedded reinforcing steel, enhancing its resistance to corrosion.



Innovative Research & Development

We have always been highly committed to this sector. Our research scientists work within a global network comprising 31 centers, with our Corporate Research Centre in Milan acting as a hub to coordinate the activities of all the other centers and as a central analysis laboratory. The United States has five centers, and Canada has one. All equipped with cutting-edge equipment, the centers collaborate continuously with universities as well as scientific and industrial research institutes.

The research and development laboratories also provide support for our Technical Services Division to help provide solutions for even the most complex requests from our clients. Working alongside these centers are our quality-control laboratories, which are present in all the MAPEI Group's production facilities.

Best-BackedSM Warranty Program

To bring it all together, MAPEI complements the industry's best products with simple, easy-to-understand requirements for a variety of warranty options.





MapeWrap® Primer 1

Low-Viscosity, 100%-Solids, Epoxy Resin Primer for the MapeWrap Composite System

MapeWrap Primer 1 is a 100%-solids, moisture-tolerant, low-viscosity, two-component, epoxy resin that is used as a seal coat for consolidating and priming concrete substrates. As the first component of the MapeWrap composite system, MapeWrap Primer 1 penetrates cementitious pore structures and provides a high bond for the other system components.



MapeWrap® 11

Structural Epoxy Putty Adhesive for Use with Structural Strengthening Systems

MapeWrap 11 is a two-component, 100%-solids, moisture-tolerant, structural epoxy used as an adhesive for the Carboplate® composite system. MapeWrap 11 is also used for leveling uneven concrete or masonry surfaces before application of MapeWrap fabrics or Carboplate and Maperod® C laminates.



MapeWrap® 12

Structural Epoxy Putty Adhesive for Use with Structural Strengthening Systems in Hot Climates

MapeWrap 12 is a two-component, 100%-solids, moisture-tolerant, structural epoxy used as an adhesive for the Carboplate® composite system in hot climates. MapeWrap 12 is also used for leveling uneven concrete or masonry surfaces before application of MapeWrap fabrics or Carboplate and Maperod® C laminates.

	Product Code	Packaging
U.S./Canada	7324004B	Kit: 1 U.S. gal. (3.79 L)

	Product Code	Packaging
U.S./Canada	7320104B	Kit: 1 U.S. gal. (3.79 L)

	Product Code	Packaging
U.S./Canada	7321104B	Kit: 1 U.S. gal. (3.79 L)



MapeWrap® 21

Low-Viscosity, 100%-Solids, Epoxy Resin for Impregnation of MapeWrap Fabrics

MapeWrap 21 is a 100%-solids, moisture-tolerant, low-viscosity, epoxy resin used to encapsulate the MapeWrap composite system fabrics. MapeWrap 21 was specially developed to saturate and encapsulate carbon and glass fiber fabrics and to cure to a high-performance laminate. Once cured, the laminate provides additional strength to appropriate structural elements.



MapeWrap® 21 TG

Low-Viscosity, 100%-Solids Epoxy Resin for Mechanical Saturation of MapeWrap Fabrics

MapeWrap 21 TG is a 100%-solids, moisture-tolerant, low-viscosity epoxy resin used to encapsulate the MapeWrap composite system fabrics via the wet layup technique. MapeWrap 21 TG was specially developed to saturate and encapsulate both carbon and glass fiber fabrics by way of mechanical saturation and to cure to a high-performance laminate. Once cured, the laminate provides additional strength to appropriate structural elements.



MapeWrap® 31

Medium-Viscosity, 100%-Solids, Epoxy Resin for Impregnation of MapeWrap Fabrics

MapeWrap 31 is a 100%-solids, moisture-tolerant, medium-viscosity, epoxy resin for impregnating MapeWrap composite system fabrics by a dry layup method. MapeWrap 31 was specially developed to saturate and encapsulate carbon and glass fiber fabrics and to cure to a high-performance laminate. Once cured, MapeWrap 31 provides high mechanical strength properties.

	Product Code	Packaging
U.S./Canada	40321000	Kit: 1 U.S. gal. (3.79 L)

	Product Code	Packaging
U.S./Canada	7322805	Kit: 1 U.S. gal. (3.79 L)

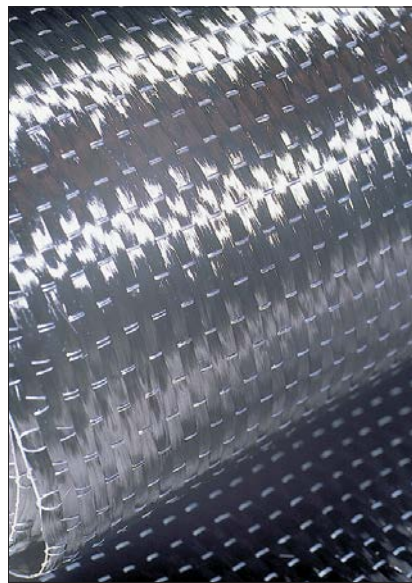
	Product Code	Packaging
U.S./Canada	40331000	Kit: 1 U.S. gal. (3.79 L)



MapeWrap® 31 T

Medium-Viscosity, 100%-Solids Epoxy Resin for Dry-Layup Impregnation of MapeWrap Fabrics

MapeWrap 31 T is a 100%-solids, moisture-tolerant, medium-viscosity epoxy resin used to encapsulate the *MapeWrap* composite system fabrics using the dry layup method. *MapeWrap 31 T* was specially developed to saturate and encapsulate both carbon and glass fiber fabrics and to cure to a high-performance FRP laminate. Once cured, the laminate provides additional strength to appropriate structural elements.



MapeWrap® C Uni-Ax 300

Uni-Directional Carbon Fiber Fabric

MapeWrap C Uni-Ax 300 is a high-strength, uni-directional carbon fiber fabric that, when used with the *MapeWrap* family of two-component epoxy adhesives, forms an externally bonded fiber-reinforced polymer (FRP) reinforcement system engineered to increase the strength of existing structural elements. *MapeWrap C Uni-Ax 300* is applied to the surface of structural members in buildings, parking garages, bridges, marine piles and other structures to contribute significant strength, without increasing the dead load supported by the structure.



MapeWrap® C Uni-Ax 600

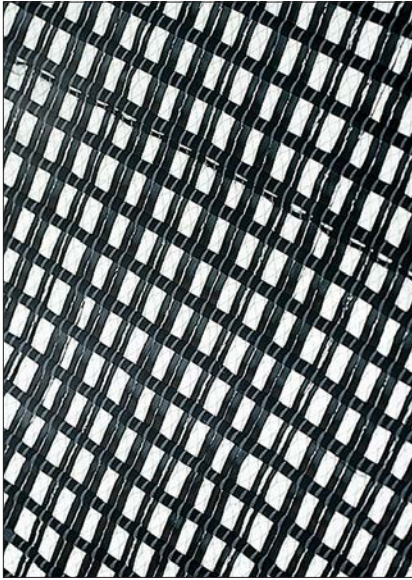
High-Strength, Uni-Directional Carbon Fiber Fabric

MapeWrap C Uni-Ax 600 is a high-strength, uni-directional carbon fiber fabric that, when used with the *MapeWrap* family of two-component epoxy adhesives, forms an externally bonded fiber-reinforced polymer (FRP) reinforcement system. *MapeWrap C Uni-Ax 600* is part of an engineering solution that allows for an increase in the strength of structural elements without increasing the dead load supported by the structure.

	Product Code	Packaging
U.S./Canada	7323304	Kit: 1 U.S. gal. (3.79 L)

	Product Code	Packaging
U.S./Canada	73F0601050	Roll: 3.94" x 164' (10 cm x 50.0 m)
	73F0602050	Roll: 7.87" x 164' (20 cm x 50.0 m)
	73F0604050	Roll: 15.75" x 164' (40 cm x 50.0 m)
	73F0605050	Roll: 19.7" x 164' (50 cm x 50.0 m)

	Product Code	Packaging
U.S./Canada	73F1501050	Roll: 3.94" x 164' (10 cm x 50.0 m)
	73F1501550	Roll: 5.91" x 164' (15 cm x 50.0 m)
	73F1502050	Roll: 7.87" x 164' (20 cm x 50.0 m)
	73F1503050	Roll: 11.8" x 164' (30 cm x 50.0 m)
	73F1504050	Roll: 15.75" x 164' (40 cm x 50.0 m)
	73F1505050	Roll: 19.7" x 164' (50 cm x 50.0 m)
	73F1506050	Roll: 23.6" x 164' (60 cm x 50.0 m)



MapeWrap® C Bi-Ax

High-Strength, Bi-Directional Carbon Fiber Fabric

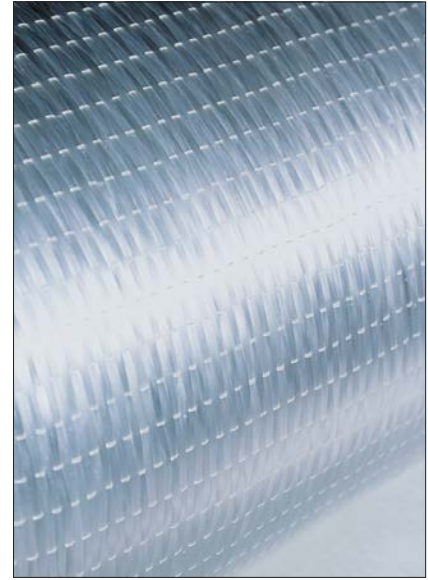
MapeWrap C Bi-Ax is a high-strength, bi-directional carbon fiber fabric in which the primary fibers are oriented in the 0°/90° directions. When used with the *MapeWrap* family of two-component epoxy adhesives, *MapeWrap C Bi-Ax* forms an externally bonded fiber-reinforced polymer (FRP) reinforcement system engineered to increase the strength of existing structural elements. When applied to the surface of structural members in buildings, parking garages, bridges, marine piles and other structures, *MapeWrap C Bi-Ax* contributes significant strength with minimal increase to the dead load supported by the structure.



MapeWrap® G Bi-Ax

High-Strength, Bi-Directional E-Glass Fiber Fabric

MapeWrap G Bi-Ax is a high-strength, bi-directional glass fiber fabric in which the primary fibers are oriented in the 0°/90° directions. When used with the *MapeWrap* family of two-component epoxy adhesives, *MapeWrap G Bi-Ax* forms an externally bonded fiber-reinforced polymer (FRP) reinforcement system engineered to increase the strength of existing structural elements. When applied to the surface of structural members in buildings, parking garages, bridges, marine piles and other structures, *MapeWrap G Bi-Ax* contributes significant strength with minimal increase to the dead load supported by the structure, particularly in seismic applications.



MapeWrap® G Uni-Ax

High-Strength, Uni-Directional E-Glass Fiber Fabric

MapeWrap G Uni-Ax is a high-strength, uni-directional E-glass fiber fabric that, when used with the *MapeWrap* family of two-component epoxy adhesives, forms an externally bonded fiber-reinforced polymer (FRP) reinforcement system engineered to increase the strength of structural elements. *MapeWrap G Uni-Ax 900* is applied to the surface of structural members in buildings, parking garages, bridges, marine piles and other structures to improve the strength and/or seismic performance of concrete columns, masonry and concrete walls, and concrete beam-column connections.

	Product Code	Packaging
U.S./ Canada	73D0304050	Roll: <i>MapeWrap C Bi-Ax</i> 230, 15.75' x 164' (40 cm x 50 m)
	73D0904050	Roll: <i>MapeWrap C Bi-Ax</i> 360, 15.75' x 164' (40 cm x 50 m)

	Product Code	Packaging
U.S./ Canada	73J0610099	Roll: <i>MapeWrap G Bi-Ax</i> 300/100, 328' (100 m)

	Product Code	Packaging
U.S./ Canada	73L2106050	Roll: <i>MapeWrap G Uni-Ax</i> 900, 23.6' x 164' (60 cm x 50 m)



Carboplate® E 170

Pultruded Carbon Fiber Plate Pre- Impregnated in Epoxy-Based Resin

Carboplate E 170 is a range of pultruded carbon-fiber-reinforced polymer (CFRP) plates designed for external structural strengthening of existing concrete, wood and masonry. *Carboplate E 170* is externally bonded onto the surface of the substrate to strengthen and stiffen existing structures, using an epoxy resin specifically designed for the application. *Carboplate E 170* is protected on both sides by a plastic film, eliminating the need for solvent cleaning of the plates before installation.

Carboplate E 170 is available in thicknesses of 0.047" and 0.055" (1.2 and 1.4 mm).

	Product Code	Packaging
U.S./ Canada	73A3110025	Roll: 2" x 82' (50 mm x 25 m)
	73A3210025	Roll: 4" x 82' (100 mm x 25 m)
	73A3105025	Roll: 2" x 82' (50 mm x 25 m)
	73A3110025	Roll: 4" x 82' (100 mm x 25 m)
	73A3110050	Roll: 4" x 164' (100 mm x 50 m)
	73A3212025	Roll: 4.7" x 82' (120 mm x 25 m)
	73A3215025	Roll: 6" x 82' (150 mm x 25 m)



Maperod® C/Maperod G

Pultruded Carbon or Glass Fiber Bars for the Repair and Structural Strengthening of Damaged Concrete, Timber and Masonry Elements

Maperod C is a range of deformed, pultruded carbon fiber bars in an epoxy matrix with a peel-ply film, and used for internal strengthening of concrete and masonry substrates. *Maperod G* is a range of deformed, pultruded glass fiber bars in an epoxy-modified, vinyl-ester matrix, characterized by high tensile strength and most often used in masonry applications.

	Product Code	Packaging
U.S./ Canada	73W2030406	Rods: <i>Maperod C</i> 150/10, 3/8" x 19.68' (10 mm x 6 m)
	73W2030330	Rods: <i>Maperod C</i> 150/8, 5/16" x 19.68' (8 mm x 6 m)
	73W3010460	Rods: <i>Maperod G</i> 40/10, 3/8" x 19.68' (10 mm x 6 m)
	73W3010560	Rods: <i>Maperod G</i> 40/12, 1/2" x 19.68' (12 mm x 6 m)



MapeWrap® C Fiocco/ MapeWrap G Fiocco

Uni-Directional, High-Strength Carbon or Glass Fiber Cords for Impregnation with *MapeWrap 21* for Anchorage and Structural Connections

MapeWrap C Fiocco is a range of uni-directional carbon fibers, contained inside gauze wrapping, that gives its characteristic "cord" appearance. *MapeWrap G Fiocco* is a similar range of products that utilize uni-axial glass fibers wrapped in gauze. The *MapeWrap Fiocco* line of products is typically used for anchorage of the *MapeWrap* and *Carboplate®* fiber-reinforced polymer (FRP) strengthening systems in concrete, masonry, brick and timber substrates. *MapeWrap Fiocco* carbon and glass cords may also be used for creating structural connections between concrete, masonry, brick and timber elements with the *MapeWrap* and *Carboplate FRP* systems.

	Product Code	Packaging
U.S./ Canada	73O20610	Cord: <i>MapeWrap C Fiocco</i> , 1/4" (6 mm)
	73O20810	Cord: <i>MapeWrap C Fiocco</i> , 5/16" (8 mm)
	73O21010	Cord: <i>MapeWrap C Fiocco</i> , 3/8" (10 mm)
	73O21210	Cord: <i>MapeWrap C Fiocco</i> , 1/2" (12 mm)
	73O30810	Cord: <i>MapeWrap G Fiocco</i> , 5/16" (8 mm)



Mapefer™ 1K

Corrosion-Inhibiting Coating for Reinforcing Steel

Mapefer 1K is a one-component, anti-corrosion coating based on unique polymers, cementitious binders and corrosion inhibitors. Mapefer 1K is specially formulated for application on properly prepared reinforcing steel to inhibit oxidation and rust formation.



Planibond® 3C

Three-Component, Cementitious Corrosion Inhibitor and Bonding Agent

Planibond 3C is a three-component, cementitious, moisture-tolerant, water-based, epoxy-modified corrosion inhibitor and bonding agent.



Mapeshield™ I

Pure Zinc Galvanic Anode

Mapeshield I is a pure zinc anode for cathodic protection of reinforcing steel against corrosion in new, reinforced structures as well as structures requiring repair.

	Product Code	Packaging
U.S./Canada	276645	10 lbs. (4.54 kg)



	Product Code	Packaging
	36364000	Large kit (Parts A and B): 10.8 lbs. (4.90 kg)
	36344000	Part C: 44 lbs. (20.0 kg)
U.S./Canada	1964007B	Small kit: 1.74 U.S. gals. (6.59 L)



	Product Code	Packaging
	2099024	Mapeshield I 10/10, 24 per carton
	2099124	Mapeshield I 10/20, 24 per carton
U.S./Canada	2099212	Mapeshield I 30/10, 12 per carton
	2099312	Mapeshield I 30/20, 12 per carton



Planibond® AE

High-Strength, Non-Sag, Epoxy Anchoring Gel

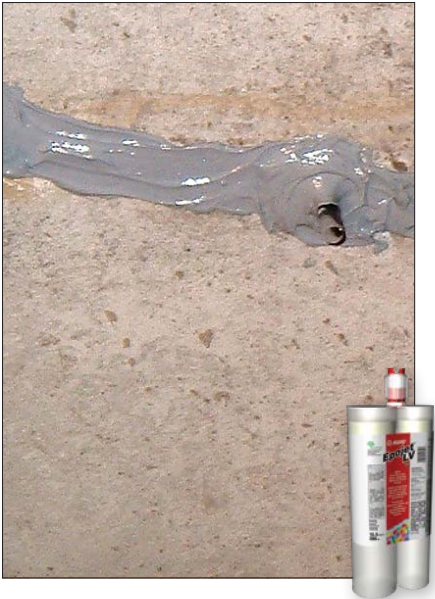
Planibond AE is a high-strength, moisture-tolerant, zero-VOC, two-part, non-sag, epoxy anchoring gel designed for a wide variety of bonding and repair applications.



Planibond® AE Fast

Rapid-Setting, High-Strength, Epoxy Anchoring Gel

Planibond AE Fast is a rapid-setting, high-strength, moisture-tolerant, two-component, 100%-solids, epoxy anchoring gel designed for a wide variety of vertical/horizontal bonding and repair applications.



Epojet™

High-Modulus, Low-Viscosity, Epoxy Injection Resin for Crack Repair

For professional use only

Epojet is a high-strength, two-component, 100%-solids, low-viscosity epoxy resin for pressure injection and sealing of cracks in structural concrete, masonry and wood.

	Product Code	Packaging
U.S./ Canada	1961556	Dual cartridge: 20.3 U.S. oz. (600 mL)
	1961508	Kit: 2 U.S. gals. (7.57 L)

	Product Code	Packaging
U.S./ Canada	1962856	Dual cartridge: 20.3 U.S. oz. (600 mL)
	1962808	Kit: 2 U.S. gals. (7.57 L)

	Product Code	Packaging
U.S./ Canada	156154	Dual cartridge: 13.5 U.S. oz. (399 mL)
	156112	Kit: 3 U.S. gals. (11.4 L)



Planitop® X

One-Component, Fast-Setting, Fiber-Reinforced, Vertical and Overhead Repair Mortar

Planitop X is a one-component, fiber-reinforced, shrinkage-compensated, high-early-strength, fast-setting, polymer-modified, high-build cementitious repair mortar with a corrosion inhibitor.



Planitop® XS

One-Component, Fast-Setting, Extended-Working-Time, Vertical and Overhead Repair Mortar

Planitop XS is an extended-working-time variation of *Planitop X*. Shrinkage-compensated, fiber-reinforced, polymer-modified and containing a proprietary corrosion inhibitor, *Planitop XS* features *Planitop X*'s outstanding workability and versatility.



Planitop® 12 SR

Sulfate-Resistant, Vertical, Overhead and Horizontal Repair Mortar with Silica Fume

Planitop 12 SR is a sulfate-resistant, one-component, shrinkage-compensated, cementitious repair mortar. *Planitop 12 SR* is fiber-reinforced and contains both silica fume and a corrosion inhibitor, and is intended for the repair of vertical, overhead and horizontal concrete surfaces.

	Product Code	Packaging
U.S./Canada	12850000	Bag: 50 lbs. (22.7 kg)
	12850010	Bag: 10 lbs. (4.54 kg)
	12851000	Pail: 50 lbs. (22.7 kg)

	Product Code	Packaging
U.S.	13050000	Bag: 50 lbs. (22.7 kg)
	13051000	Pail: 50 lbs. (22.7 kg)
Canada	13050000	Bag: 50 lbs. (22.7 kg)

	Product Code	Packaging
U.S./Canada	16756	Bag: 55 lbs. (24.9 kg)





Planitop® 15

Form-and-Pour, One-Component Repair Mortar

Planitop 15 is a one-component, shrinkage-compensated, cementitious, fiber-reinforced, fluid mortar. *Planitop 15* contains a corrosion inhibitor and silica fume, and is well-suited for form-and-pour and form-and-pump applications where high early strength and flowability are required.



Mapelastic®

Flexible, Cementitious Membrane for Waterproofing and Protecting Concrete and Masonry

Mapelastic is a two-component, cementitious membrane that waterproofs concrete and masonry. It also offers protection against chemical attack from de-icing salts, sulfates, chlorides and carbon dioxide.



Elastocolor® Texture

Water-Based, High-Build, Acrylic, Textured Coating

Elastocolor Texture is a specially designed coating for use on exterior, above-grade, new and previously coated concrete and masonry surfaces. *Elastocolor Texture*'s unique blend of aggregates produces an attractive, high-build, textured finish. It is ideal for use on restoration projects to reduce the appearance of surface imperfections and repairs or wherever a uniform textured finish is desired. *Elastocolor Texture* remains highly flexible and offers excellent filling properties and adhesion to prepared substrates.

	Product Code	Packaging
U.S./Canada	2015025	Bag: 55 lbs. (24.9 kg)

	Product Code	Packaging
U.S./Canada	39251000 (Silver)	Part A, Bag: 50 lbs. (22.7 kg)
	39252000 (White)	Part A, Bag: 50 lbs. (22.7 kg)
	39257000	Part B, Jug: 2 U.S. gals. (7.57 L)

	Product Code	Packaging
U.S./Canada	7UG091019	Pail: Medium base, 5 U.S. gals. (18.9 L)
	7UG090019	Pail: Pastel base, 5 U.S. gals. (18.9 L)





Elastocolor® Primer AR

Water-Based, Alkali-Resistant Primer for Elastocolor Coatings

Elastocolor Primer AR is a specially designed primer for use on exterior, above-grade, new and previously coated concrete and masonry surfaces. *Elastocolor Primer AR* will protect subsequent coatings from the damaging effects of high pH present in freshly placed cement-based products. It remains highly flexible, offers excellent filling and adhesion on prepared substrates, and is designed for compatibility with MAPEI's *Elastocolor* coating systems.



Elastocolor® Primer WB

Water-Based, 100%-Acrylic Primer for Elastocolor Coatings

Elastocolor Primer WB is a clear, water-based, 100%-acrylic primer for use with *Elastocolor* coatings. *Elastocolor Primer WB* improves adhesion on porous, dusting and new substrates.



Elastocolor® Flex

Water-Based, 100%-Acrylic, Elastomeric Waterproof Coating

Elastocolor Flex is an elastomeric, high-build, water-based, 100%-acrylic coating to protect and decorate above-grade, vertical exterior concrete, masonry, stucco and EIFS systems. *Elastocolor Flex* is available in two textures (smooth and fine), in a wide range of standard colors and in an unlimited number of custom colors to increase its design versatility.

	Product Code	Packaging
U.S./Canada	7UH094019	Bucket: Pastel base, 5 U.S. gals. (18.9 L)

	Product Code	Packaging
U.S./Canada	2559019	Pail: 5 U.S. gals. (18.9 L)

	Product Code	Packaging
U.S./Canada	Smooth texture	
	7UC090019	Pail: Pastel base, 5 U.S. gals. (18.9 L)
	7UC091019	Pail: Medium base, 5 U.S. gals. (18.9 L)
	7UC092019	Pail: Transparent base, 5 U.S. gals. (18.9 L)
	Fine texture	
	7UB090019	Pail: Pastel base, 5 U.S. gals. (18.9 L)
	7UB091019	Pail: Medium base, 5 U.S. gals. (18.9 L)
	7UB092019	Pail: Transparent base, 5 U.S. gals. (18.9 L)



Elastocolor® Coat

Water-Based, High-Build, 100%-Acrylic, Waterproof Coating

Elastocolor Coat is a water-based, high-build, 100%-acrylic coating designed to protect and decorate above-grade, exterior/interior vertical concrete, masonry, stucco, fiber-reinforced polymer (FRP) composites and EIFS systems. *Elastocolor Coat* is available in two textures (smooth and fine), in a wide range of standard colors and in an unlimited number of custom colors to increase its design versatility.

	Product Code	Packaging
U.S./ Canada	Smooth texture	
	7UE090019	Pail: Pastel base, 5 U.S. gals. (18.9 L)
	7UE091019	Pail: Medium base, 5 U.S. gals. (18.9 L)
	7UE092019	Pail: Transparent base, 5 U.S. gals. (18.9 L)
	Fine texture	
	7UD090019	Pail: Pastel base, 5 U.S. gals. (18.9 L)
	7UD091019	Pail: Medium base, 5 U.S. gals. (18.9 L)
	7UD092019	Pail: Transparent base, 5 U.S. gals. (18.9 L)

Building a **SUSTAINABLE** future together



Sustainability is part of **everything** we do. **MAPEI** has always been **fundamentally committed** to sustaining the **environment** for today and tomorrow. We invest in R&D to ensure that our products are **safe, reliable, durable** and have the **lowest impact possible on human health and the environment**.

For more details, visit www.mapei.com.









The MAPEI App



Available for free download on the App Store or Google Play, MAPEI's revamped app puts the power of MAPEI in the palm of your hand. The solutions to a wide range of problems are just a touch away.



Stay up to date with the latest information from MAPEI, including:

-  • Technical Data Sheets for all of MAPEI's extensive product lines.
-  • Links to MAPEI's video library, for quick access to product spotlights, MTI-TV episodes and more.
-  • All of MAPEI's 11 product calculators, to help you estimate how much product you'll need.
-  • A "Where to Buy" section that lets you look up the distributor closest to you.
-  • **Realità MAPEI North America**, MAPEI's popular magazine, for the latest on industry information, the latest product technology and more.
-  • MyMAPEI, which syncs between your phone and your desktop, seamlessly saving and updating all your curated favorites.

For your free download of MAPEI's app, visit the App Store or Google Play.



CAD and Specification Guide



The CAD/Spec Guide on MAPEI's Website (www.mapei.us) contains interactive online tools designed to help you draft a CSI 3-part specification using current industry-approved methods for ceramic, glass and stone tile installation.

Easily access MAPEI's CAD/Spec Guide to select CADs and specifications for a variety of installations, using any of these methods:

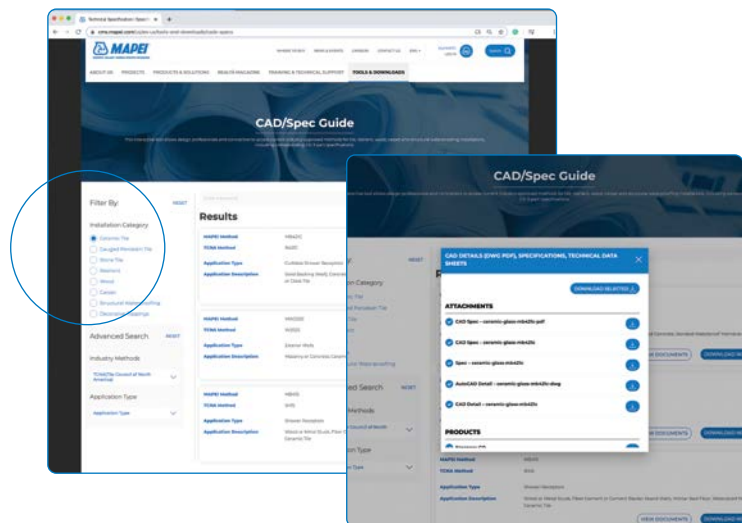
- Search by keyword (floors, walls, interior, exterior, etc.)
- Search by installation category or method
- Search by application type (bathroom floor, shower wall, balcony deck, etc.)

Installation categories include:

- Ceramic Tile
- Gauged Porcelain Tile
- Stone Tile
- Resilient
- Wood
- Carpet
- Structural Waterproofing
- Decorative Toppings

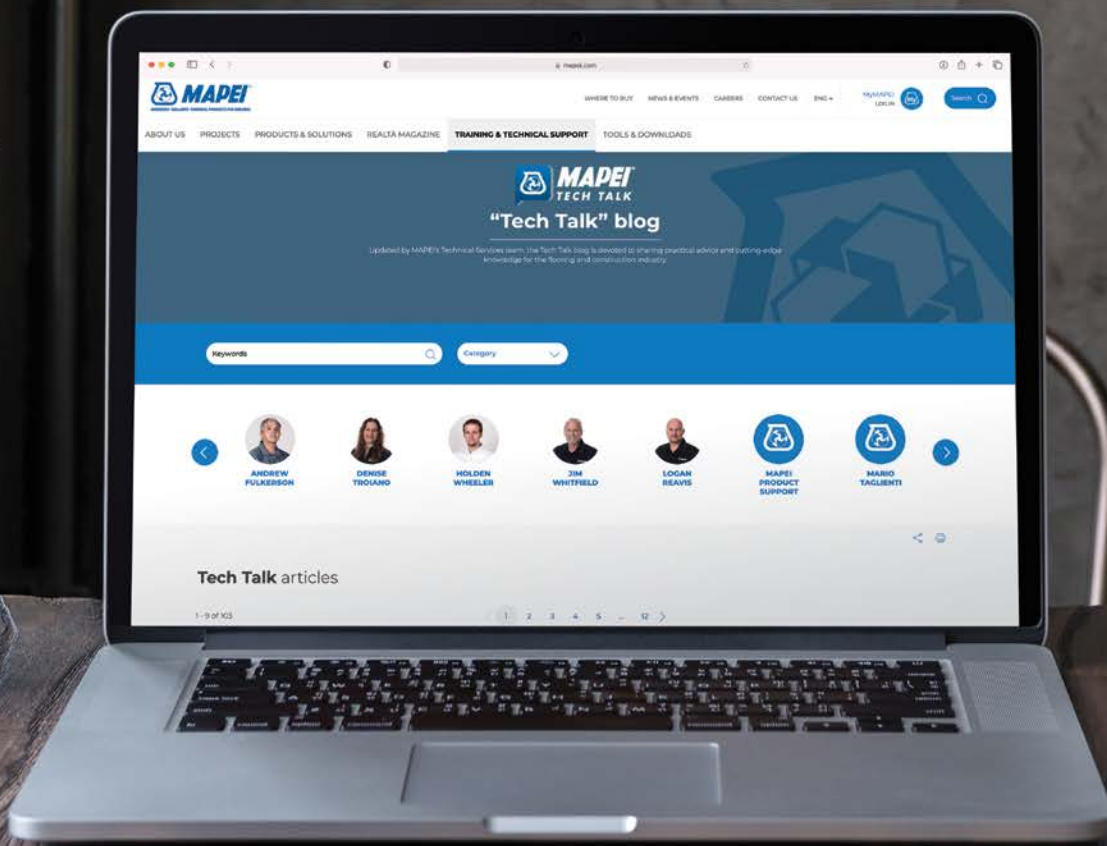
Click on a category and then follow the prompts to the desired documents:

- CAD and specification
- AutoCAD (DWG file)
- Technical Data Sheets for MAPEI products listed in the CAD and specification.



For more information, visit www.mapei.com.





Check our latest **"Tech Talk"** blog for insights and perspectives on flooring and the construction industry.

Visit www.mapei.com.



— MAPEI USA • MAPEI Canada —





— MAPEI USA • MAPEI Canada —

MAPEI Headquarters of North America

1144 East Newport Center Drive
Deerfield Beach, Florida 33442
1-888-US-MAPEI (1-888-876-2734) /
(954) 246-8888

Technical Services

1-800-365-0614 (U.S. and Puerto Rico)
1-800-361-9309 (Canada)

Customer Service

1-800-42-MAPEI (1-800-426-2734)

Services in Mexico

0-1-800-MX-MAPEI (0-1-800-696-2734)

Copyright ©2021 by MAPEI Corporation ("MAPEI") and all rights are reserved. All intellectual property rights and other information contained in this document are the exclusive property of MAPEI (or its parent or related companies), unless otherwise noted. No part of this document may be reproduced or transmitted in any form without the prior written consent of MAPEI.

Printed in the USA.

