



ADMIXTURES FOR CONCRETE

- Water Reducers
- Mid-Range Water Reducer
- High-Range Water Reducers
- Air-Entraining Agents
- Set Retarders
- Set Accelerators
- Viscosity-Modifying Agent
- Waterproofing
- Air-Detraining Agent
- Shrinkage-Reducing Admixtures
- Shrinkage-Compensating Agent
- Concrete Reclaiming System
- Fibers
- Slump Retainers
- Corrosion Inhibiting Admixture

PRODUCT LINES OF CANADA

 FLOOR COVERING INSTALLATION SYSTEMS

 PRODUCTS FOR SPORTS FLOORING

 CONCRETE RESTORATION SYSTEMS

 TILE & STONE INSTALLATION SYSTEMS

 PRODUCTS FOR WOOD FLOORING

 PRODUCTS FOR STRUCTURAL STRENGTHENING

 WATERPROOFING SYSTEMS

 CEMENTITIOUS AND RESIN FLOORING SYSTEMS

 ADMIXTURES FOR CONCRETE

 CEMENT ADDITIVES

 PRODUCTS FOR UNDERGROUND CONSTRUCTION (UTT)

TABLE OF CONTENTS

ADMIXTURES
FOR CONCRETE



Introduction.....	2-3	Set Retarders		Concrete Reclaiming System	
Product Selection Chart	4-5	<i>Mapetard™ 800</i>	9	<i>Re-Con Zero™ Evo</i>	12
PRODUCT INFORMATION		<i>Mapetard SD 190</i>	9	Fibers	
Water Reducers		Set Accelerators		<i>Mapefibre™ HP18</i>	12
<i>Mapeplast™ N811</i>	6	<i>Mapefast™ C [NA]</i>	9	<i>Mapefibre IT 39 NV</i>	13
<i>Mapeplast R815</i>	6	<i>Mapefast Super Set</i>	10	<i>Mapefibre NS18 [NA]</i>	13
Mid-Range Water Reducer		<i>Mapefast 100</i>	10	<i>Mapefibre NS18 Polymesh [NA]</i>	13
<i>Dynamon® Easy 75</i>	6	Viscosity-Modifying Agent		<i>Mapefibre ST42</i>	14
High-Range Water Reducers		<i>Mapecrete™ V3K</i>	10	<i>Mapefibre ST55</i>	14
<i>Mapefluid™ N200 [NA]</i>	7	Waterproofing		Slump Retainers	
<i>Dynamon SX [NA]</i>	7	<i>Idrocrete™ KR 1000 [NA]</i>	11	<i>Dynamon EW 10</i>	14
<i>Dynamon SX 37</i>	7	Air-Detraining Agent		<i>Dynamon EW 11</i>	15
<i>Dynamon NRG 1092</i>	8	<i>Mapeair Zero [NA]</i>	11	<i>Dynamon EW 12</i>	15
Air-Entraining Agents		Shrinkage-Reducing Admixtures		Corrosion-Inhibiting Admixture	
<i>Mapeair™ SA-50</i>	8	<i>Mapecure™ SRA 27 [NA]</i>	11	<i>Mapeshield™ CI 300 [NA]</i>	15
<i>Mapeair LA/L</i>	8	Shrinkage-Compensating Agent			
		<i>Expancrete [NA]</i>	12		



A WORLDWIDE LEADER

Originally established in 1937, today MAPEI is a privately owned global corporation headquartered in Milan, Italy, with 89 subsidiaries including 81 plants in 36 countries. The company specializes in manufacturing chemical products for building, including waterproofing products, specialty mortars and admixtures for concrete, products to restore historic buildings, and decorative and protective coatings for concrete surfaces. In addition, MAPEI is a world leader in the manufacturing of mortars, grouts, adhesives and complementary products for installing all types of floor and wall coverings. MAPEI Group chose Canada for its first steps away from home, opening the Laval, Québec, plant in 1978 as MAPEI Inc. MAPEI's Canadian footprint currently spans over 4,600 km, with production facilities in Québec, Ontario and British Columbia and a distribution center in Alberta.

WHERE CONCRETE MEETS TECHNOLOGY





SUPERIOR PRODUCTS

A Complete Range of Products

MAPEI produces the most innovative products for the construction market. More than 5,500 products globally (adhesives, sealants, mortars, admixtures, latex, etc.) are manufactured in MAPEI's plants, which produce the world's most complete range of building products. Diversified, high-quality chemical products – from powdered adhesives, to liquid and paste products, to polymers – are created to meet the needs of more than 66,000 customers around the world.

Quality Control

MAPEI is an ISO 9001-2000 certified company. Its products are produced according to exacting standards, strictly adhering to process and procedural guidelines with documented compliance. This rigid production format is vigilantly followed to ensure that every product is produced uniformly from batch to batch.



PROFESSIONAL SUPPORT NETWORK

Knowledgeable Sales Force

MAPEI offers the largest, most highly trained sales force within the industry to serve your needs for product application/installation recommendations. Its sales representatives are focused on supporting you with product knowledge, product demonstrations, product information, marketing support materials and other relevant tools to help you generate sales.

Technical Expertise

An in-house Technical Services Call Center responds to customers' telephone inquiries with answers to installation challenges in real time. In addition, MAPEI can offer field support for job startups, product training and on-site problem resolution.



Customer Service Plus

MAPEI's standards for customer service are best-in-class. Our leadership includes such service innovations as:

- Customer-friendly, efficient processes
- One-call resolution
- Employee commitment to effective customer dialog



Innovative Research & Development

We have always been highly committed to this sector. Our research scientists work within a global network comprising 31 centers, with our Corporate Research Centre in Milan acting as a hub to coordinate the activities of all the other centers and as a central analysis laboratory. The United States has five centers, and Canada has one. All equipped with cutting-edge equipment, the centers collaborate continuously with universities as well as scientific and industrial research institutes.

The research and development laboratories also provide support for our Technical Services Division to help provide solutions for even the most complex requests from our clients. Working alongside these centers are our quality-control laboratories, which are present in all the MAPEI Group's production facilities.

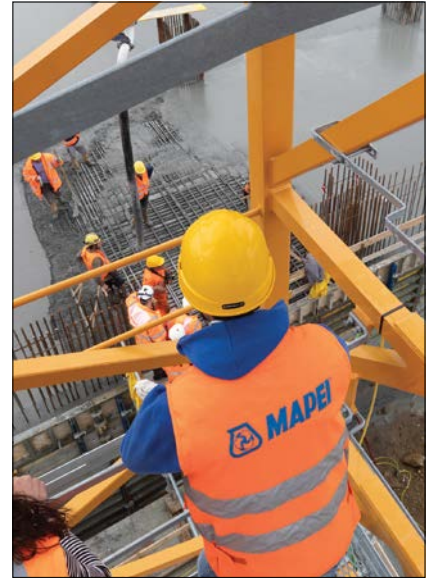
Best-BackedSM Warranty Program

To bring it all together, MAPEI complements the industry's best products with simple, easy-to-understand requirements for a variety of warranty options.



Product Family/ Category	Product Name	Product Characteristics	Performance Requirements	Target Dosage
Water Reducers	<i>Mapeplast™ N811</i>	Set-neutral, ligno-based water reducer	ASTM C494 Type A	195 to 780 mL/100 kg
	<i>Mapeplast R815</i>	Set-neutral (low-dosage), ligno-based water reducer	ASTM C494 Type A, B and D	150 to 250 mL/100 kg (Type A) 275 to 400 mL/100 kg (Type B and D)
Mid-Range Water Reducer	<i>Dynamon™ Easy 75</i>	Polycarboxylate-based and air-neutral with high finishability	ASTM C494 Type A, F	100 to 1 000 mL/100 kg
High-Range Water Reducers	<i>Mapefluid™ N200 [NA]</i>	PNS-based, high-range water reducer	ASTM C494 Type F	200 to 1 630 mL/100 kg
	<i>Dynamon SX [NA]</i>	Multi-use, polycarboxylate-based, multi-range water reducer	ASTM C494 Type A, F	200 to 975 mL/100 kg
	<i>Dynamon SX 37</i>	High-performance, polycarboxylate, high-range water reducer for concrete with low water-to-cement ratio	ASTM C494 Type F	130 to 720 mL/100 kg
	<i>Dynamon NRG 1092</i>	High-early-strength, polycarboxylate, high-range water reducer	ASTM Type F	195 to 975 mL/100 kg
Air-Entraining Agents	<i>Mapeair™ SA-50</i>	Synthetic, multi-use, air-entraining agent	ASTM C260	10 to 400 mL/100 kg
	<i>Mapeair LA/L</i>	Foaming agent for flowable fill and cellular concrete	N/A	0.8 to 1.2 L/m ³
Set Retarders	<i>Mapetard™ 800</i>	Sugar-based, set-retarding agent	ASTM C494 Type B, D	130 to 325 mL/100 kg
	<i>Mapetard SD 190</i>	Acid-based, hydration-control agent	ASTM C494 Type B	65 to 2 400 mL/truck
Set Accelerators	<i>Mapefast™ C [NA]</i>	Chloride-based set accelerator	N/A	750 to 2 000 mL/100 kg
	<i>Mapefast Super Set</i>	Non-chloride-based set accelerator for normal- and low-temperature concrete	ASTM C494 Type C, E	400 to 2 100 mL/100 kg
	<i>Mapefast 100</i>	Early-Age Strength Enhancer	ASTM C494 Type S	0.5 to 3 L/100 kg

Product Family/Category	Product Name	Product Characteristics	Performance Requirements	Target Dosage
Viscosity-Modifying Admixture	<i>Mapecrete™ V3K</i>	Multi-use, liquid, viscosity-modifying admixture	ASTM C494 Type S	See Technical Data Sheet
Waterproofing	<i>Idrocrete™ KR 1000</i> [NA]	Crystalline, waterproofing powder	None	1 to 3 kg/100 kg
Air-Detraining Agent	<i>Mapeair Zero</i> [NA]	Liquid, non-hazardous air reducer	None	20 to 100 mL/m ³
Shrinkage-Reducing Admixtures	<i>Mapecure™ SRA 27</i> [NA]	Air-neutral, shrinkage-reducing agent	ASTM C494 Type S	1 to 2 L/100 kg
Shrinkage-Compensating Agent	<i>Expancrete</i> [NA]	Powdered, Type G expansive agent	N/A	2 to 8 kg/100 kg
Concrete Reclaiming System	<i>Re-Con Zero™ Evo</i>	Two-component powder for recycling returned concrete	N/A	See Technical Data Sheet
Fibers	<i>Mapefibre™ HP18</i>	18-mm, ultra-fine monofilament polypropylene micro synthetic fibers	ASTM C1116	0.3 to 0.6 kg/m ³
	<i>Mapefibre IT 39 NV</i>	52-mm, shotcrete macro fiber	ASTM C1116	3 to 6 kg/m ³
	<i>Mapefibre NS18</i> [NA]	18-mm, monofilament polypropylene micro synthetic fibers	ASTM C1116	0.6 kg/m ³
	<i>Mapefibre NS18 Polymesh</i> [NA]	18-mm, fibrillated polypropylene micro synthetic fibers	ASTM C1116	0.9 kg/m ³
	<i>Mapefibre ST42</i>	42-mm, concrete macro fiber	ASTM C1116	1.8 to 6 kg/m ³
	<i>Mapefibre ST55</i>	55-mm, polyolefin macro synthetic fibers for high-ductility	N/A	1.5 to 6 kg/m ³
Slump Retainers	<i>Dynamon EW 10</i>	polymeric slump retainer	ASTM C 494 Type S	0.1 to 0.7 L/100 kg
	<i>Dynamon EW 11</i>	polymeric slump retainer	ASTM C 494 Type S	0.1 to 0.7 L/100 kg
	<i>Dynamon EW 12</i>	polymeric slump retainer	ASTM C 494 Type S	0.1 to 0.7 L/100 kg
Corrosion-Inhibiting Admixture	<i>Mapeshield™ CI 300</i> [NA]	calcium-nitrite-based corrosion-inhibiting admixture	ASTM C 494 Type C	See Technical Data Sheet



Mapeplast™ N811

Multi-Range, Water-Reducing Admixture

Mapeplast N811 is a normal-setting, water-reducing admixture for concrete. By varying the dosage rate, it can be used as a normal, or mid-range water-reducing admixture. It improves the quality of concrete by decreasing the water-to-cementitious ratio. *Mapeplast N811* is designed to facilitate the placing and finishing of ready-mixed concrete. *Mapeplast N811* conforms to ASTM C494 Type A and CSA A23.1.

Mapeplast™ R815

Water-Reducing and Set-Retarding Admixture

Mapeplast R815 is a multi-usage admixture that when used at a low dosage, provides water-reduction with no impact on set-time. However, at higher dosages, while providing additional water reduction, it also delays set, and as such, *Mapeplast R815* conforms to ASTM C494 Type A, B and D and CSA A23.1. *Mapeplast R815* increases strength, and improves workability and finishing characteristics.

Dynamon® Easy 75

Multi-Range, Water-Reducing Admixture

Dynamon Easy 75 is a normal-setting, multi-range, water-reducing admixture for concrete. By varying the dosage rate, it can be used as a normal or mid-range, water-reducing admixture. It improves the quality of concrete by decreasing the ratio of water to cementitious material. *Dynamon Easy 75* is designed specifically for concrete that requires power troweling and is a perfect solution for any slabs. However, it can be used for any application where improved concrete aesthetic performance is required. *Dynamon Easy 75* conforms to ASTM C494 Types A, F and CSA A23.1.

	Product Code	Packaging
Canada	2218901	Bulk
	2218985	Tote: 1 041 L
	2218978	Drum: 208 L
	2218919	Bucket: 18 L

	Product Code	Packaging
Canada	5381601	Bulk
	5381685	Tote: 1 041 L
	5381678	Drum: 208 L
	5381620	Bucket: 18 L

	Product Code	Packaging
Canada	2178701	Bulk
	2178785	Tote: 1 041 L
	2178779	Drum: 208 L
	2178720	Bucket: 18 L



Mapefluid™ N200 [NA]

High-Range, Water-Reducing Admixture

Mapefluid N200 is a high-range, naphthalene-sulfonate-based, water-reducing admixture for normal-setting, high-performance and durable concrete. Concrete manufactured with *Mapefluid N200* has a high level of workability and exhibits excellent mechanical properties when hardened. *Mapefluid N200* meets the requirements of ASTM C494, Type F, as well as CSA A23.1.

Dynamon® SX [NA]

High-Range, Water-Reducing Admixture

Dynamon SX is a high-performance, water-reducing admixture for concrete, is based on polycarboxylate technology and belongs to MAPEI's *Dynamon* system. *Dynamon SX* meets the requirements of ASTM C494 Type A and Type F and AASHTO M194 Type A and Type F.

Dynamon® SX 37

High-Range, Water-Reducing Admixture

Dynamon SX 37 is a high-performance admixture for concrete that is based on polycarboxylate technology and belongs to MAPEI's *Dynamon* system. *Dynamon SX 37* meets the requirements of ASTM C494 Type F and CSA A23.1.

	Product Code	Packaging
Canada	086501	Bulk
	086585	Tote: 1 000 L
	086578	Drum: 208 L
	086524	Bucket: 18 L

	Product Code	Packaging
Canada	215201	Bulk
	215286	Tote: 1 041 L
	215279	Drum: 208 L
	215219	Bucket: 18 L

	Product Code	Packaging
Canada	2153801	Bulk
	2153885	Tote: 1 041 L
	2153878	Drum: 208 L
	2153820	Bucket: 18 L



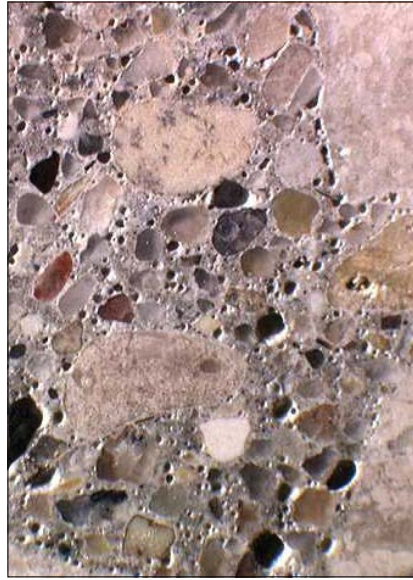
Dynamon® NRG 1092

High-Range, Water-Reducing Admixture

Dynamon NRG 1092 is a high-range, water-reducing admixture for normal-setting, high-performance and durable concrete. Concrete manufactured with *Dynamon NRG 1092* has a high level of workability and exhibits excellent mechanical properties when hardened.

Dynamon NRG 1092 meets the requirements for ASTM C494 Type A and Type F as well as AASHTO M194 Type A and Type F.

	Product Code	Packaging
Canada	5377801	Bulk
	5377885	Tote: 1 041 L
	5377878	Drum: 208 L
	5377820	Bucket: 18 L



Mapeair™ SA-50

Air-Entraining Admixture

Mapeair SA-50 is a specifically developed synthetic multi-component air entraining admixture for stabilizing superior quality air-void systems. *Mapeair SA-50* will produce a fine air-void structure in all concrete applications including mixtures which contain low alkali cement or supplementary cementitious materials. *Mapeair SA-50* is formulated specifically for ready-mix and precast concrete applications and conforms to ASTM C260 and CSA A23.1.

	Product Code	Packaging
Canada	2075501	Bulk
	2075585	Tote: 1 041 L
	2075578	Drum: 208 L
	2075520	Bucket: 18 L



Mapeair™ LA/L

Admixture for Lightweight Mortars and Concrete

Mapeair LA/L is a liquid admixture with foaming action for entraining high volumes of air in cementitious mixtures, especially recommended for producing easily pumpable lightweight mortars and concretes, flowable fill and cellular concrete.

	Product Code	Packaging
Canada	2071185	Tote: 1 000 L
	2071179	Drum: 200 L
	2071125	Bucket: 25 kg/22.7 L



Mapetard™ 800

Set-Retarding Admixture

Mapetard 800 is a highly concentrated, set-retarding liquid admixture, which reduces the quantity of mixing water required to produce concrete of a standard consistency with the benefit of extended slump-life and workability. Mapetard 800 conforms to ASTM C 494 Type B and Type D and CSA A23.1.

Mapetard™ SD 190

Hydration Stabilizer

Mapetard SD 190 is a ready-to-use liquid solution designed to control the hydration process in Portland-cement concrete and concrete wash water. This advanced set retarder coats the hydrating cement particles in the concrete and wash water, resulting in the suspension of the hydration chemical reaction. Mapetard SD 190 maintains the plasticity, slump and temperature, and postpones the set of the concrete for a predictable period of time. Eventually, Mapetard SD 190 is chemically consumed and normal hydration continues. Mapetard SD 190 conforms to ASTM C494 Type B and CSA A23.1.

Mapefast™ C [NA]

Chloride-Based Accelerating Admixture for Cementitious Mortar and Concrete

Mapefast C is a chloride-based, liquid setting-accelerator admixture.

	Product Code	Packaging
Canada	2218501	Bulk
	2218585	Tote: 1 041 L
	2218578	Drum: 208 L
	2218520	Bucket: 18 L

	Product Code	Packaging
Canada	2219201	Bulk
	2219285	Tote: 1 041 L
	2219278	Drum: 208 L
	2219220	Bucket: 18 L

	Product Code	Packaging
Canada	0751601	Bulk
	0751685	Tote: 1 041 L
	0751679	Drum: 208 L
	0751618	Bucket: 18 L



Mapefast™ Super Set

Low-Temperature, Non-Chloride, Set-Accelerating Admixture

Mapefast Super Set is a non-chloride, water-reducing admixture formulated to accelerate the strength development and setting time of concrete in cold weather. *Mapefast Super Set* can reduce labor costs associated with the finishing process.

Mapefast Super Set is non-corrosive and therefore will not contribute to the increased corrosion of reinforcing steel embedded within the concrete. It is recommended for use in all types of concrete, especially reinforced and pre-stressed. *Mapefast Super Set* meets or exceeds the requirements of ASTM C494, Type C and E and CSA A23.1.

Mapefast™ 100

Early-Age Strength Enhancer for Mortar and Concrete

Mapefast 100 is a high-performance chloride-free liquid hardening accelerating admixture that provides exceptional early strength acceleration at low and mid temperature ranges. *Mapefast 100* meets the requirements of ASTM C494 Type S and CSA A23.1.

Mapefast 100 is formulated with a complex blend of organic and inorganic components that mainly targets the CSH generation reactions. As such, it has less impact on set time, allowing easier concrete placement and consolidation. Moreover, unlike traditional set accelerators, its unique formulation will not negatively impact the concrete's 28-day compressive strength, resulting in stronger and more durable concrete structures.

Mapecrete™ V3K

High-Efficiency, Viscosity-Modifying Admixture for Producing Self-Compacting Concrete

Mapecrete V3K is a liquid admixture specially formulated for use in the production of ready-mixed and precast concrete that requires high fluidity with no segregation. With the use of *Mapecrete V3K* to control viscosity, self-compacting concrete can be produced with little or no fillers. *Mapecrete V3K* meets the requirements of ASTM C494 Type S and CSA A23.1.

	Product Code	Packaging
Canada	2217201	Bulk
	2217285	Tote: 1 041 L
	2217278	Drum: 208 L
	2217220	Bucket: 20 L

	Product Code	Packaging
Canada	0764501	Bulk (L)
	0764518	Bucket: 18 L
	0764578	Drum: 208 L
	0764585	Tote: 1 041 L

	Product Code	Packaging
Canada	2382201	Bulk
	2382285	Tote: 1 000 L
	2382278	Drum: 208 L
	2382220	Bucket: 18 L



Idrocrete™ KR 1000 [NA]

Crystallizing Admixture for Waterproof Concrete

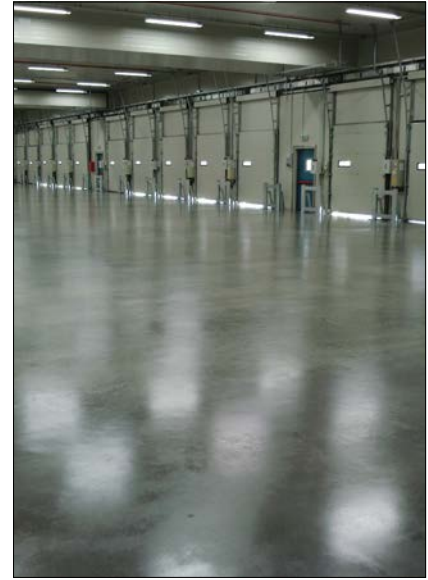
Idrocrete KR 1000 is a powder admixture made from special hydrophilic components which, when added to a concrete mix, reduces the permeability of hardened concrete.



Mapeair™ Zero [NA]

Air-Detraining Admixture for Concrete

Mapeair Zero is a liquid admixture developed to eliminate unwanted entrapped air in concrete. When added to any type of concrete mix, it reduces the formation of pinholes, bubbles and air pockets formed during the mixing and application phases. The de-aerating effect of *Mapeair Zero* increases the density of concrete, leading to higher compressive strength, lower porosity and permeability and, therefore, improved durability. Through elimination of the excess air bubbles, the overall appearance of exposed concrete is improved and the surface of poured concrete is more compact and even.



Mapecure™ SRA 27 [NA]

Liquid, Shrinkage-Reducing Admixture for Concrete

Mapecure SRA 27 is a chloride-free, liquid admixture specially developed to reduce hydraulic shrinkage in concrete. *Mapecure SRA 27* does not contain expansion agents.

	Product Code	Packaging
Canada	2821720	Bag: 20 kg

	Product Code	Packaging
Canada	8816501	Bulk
	8816583	Tote: 1 000 L
	8816578	Drum: 208 L
	8816520	Bucket: 18 L

	Product Code	Packaging
Canada	1698301	Bulk (L)
	1698318	Bucket (18 L)
	1698378	Drum (200 L)
	1698385	Tote (1 000 L)



Expancrete [NA]

Expansive Agent for Shrinkage-Compensating Concrete

Expancrete is a powdered product added to the other ingredients of concrete in order to compensate for drying shrinkage. According to ACI 223 ("Guide for the Use of Shrinkage-Compensating Concrete"), *Expancrete* is a Type G expansive agent.

Re-Con Zero™ Evo

Two-Component Powder Product for Recovering Returned Concrete

Re-Con Zero Evo is a two-component powder product used to recover all "returned concrete" with zero impact on the environment and zero investment required for reclaiming plants.

Mapefibre™ HP18

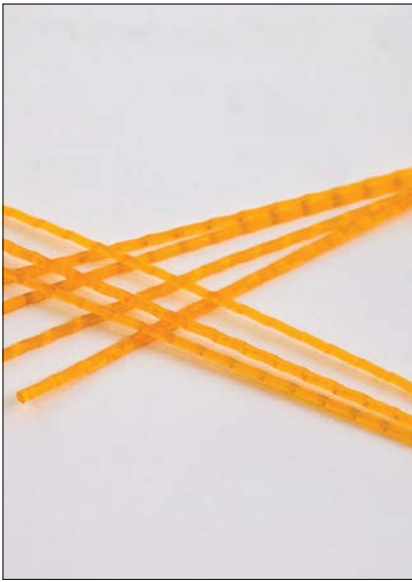
High-Performance Monofilament Micro Synthetic Fibers for Concrete

Mapefibre HP18 is an ultra-fine monofilament polypropylene fiber manufactured from 100% virgin polypropylene resins. *Mapefibre HP18* is primarily used as a plastic-shrinkage reinforcement in self-leveling screeds, mortars and concrete. The fiber measurably reduces plastic settlement, while offering excellent distribution and finishability. *Mapefibre HP18* also extends the service life of concrete by reducing permeability and enhancing impact and surface abrasion resistance. *Mapefibre HP18* complies with ASTM C1116 Section 4.1.3.

	Product Code	Packaging
Canada	202120 202483	Bag: 20 kg Super Sack: 1000 kg

	Product Code	Packaging
Canada	0755512	Kit: 6x2 kg/piece

	Product Code	Packaging
Canada	-----	Pallets of 54 boxes / Box: 40 x 0.3 kg bag



Mapefibre™ IT 39 NV

Macro Synthetic Fibers for Shotcrete Applications

Mapefibre IT 39 NV are polyolefin macro synthetic fibers which provide excellent energy-absorption performance for all shotcrete applications.

	Product Code	Packaging
Canada	8204506	Bag: 6 kg



Mapefibre™ NS18 [NA]

Monofilament Micro Synthetic Fibers for Concrete

Mapefibre NS18 is a monofilament polypropylene fiber manufactured from 100% virgin polypropylene resins. Mapefibre NS18 is primarily used as a plastic-shrinkage reinforcement in concrete. The fiber measurably reduces plastic settlement, while offering excellent distribution and finishability. Mapefibre NS18 also extends the service life of concrete by reducing permeability and enhancing impact and surface abrasion resistance. Mapefibre NS18 complies with ASTM C1116 Section 4.1.3.

	Product Code	Packaging
Canada	8204738	Box: 18x0.6 kg/piece



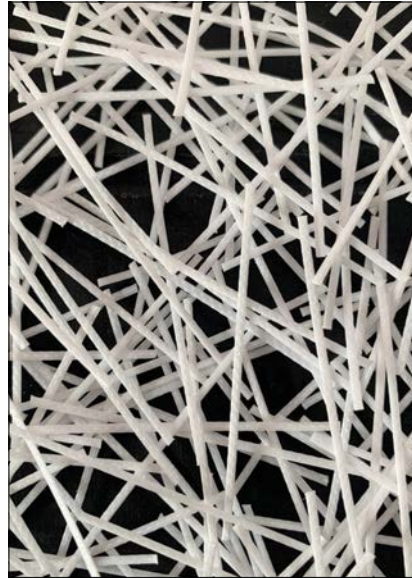
Mapefibre™ NS18 Polymesh [NA]

Fibrillated Micro Synthetic Fibers for Concrete

Mapefibre NS18 Polymesh is a fibrillated polypropylene fiber manufactured from 100% virgin polypropylene resins. Mapefibre NS18 Polymesh is primarily used as a plastic-shrinkage reinforcement in concrete. The fiber measurably reduces plastic settlement, while offering excellent distribution and finishability. Mapefibre NS18 Polymesh also extends service life of the concrete by reducing permeability and enhancing impact and surface abrasion resistance. Mapefibre NS18 Polymesh complies with ASTM C1116 Section 4.1.3.

	Product Code	Packaging
Canada	8207738	Box: 18 x 0.9 kg bag





Mapefibre™ ST42

Macro Synthetic Fibers for Concrete

Mapefibre ST42 are macro polymer fibers, with a length of 42 mm developed to improve the performance characteristics of conventional concrete, pre-cast concrete and shotcrete. Mapefibre ST42 represent a cost-effective alternative to traditional reinforcing techniques such as welded wire mesh and/or steel fibers. Mapefibre ST42 can be used to distribute loads, to limit crack phenomenon due to plastic shrinkage and to produce high-ductility concrete and normal-setting and accelerated-setting shotcrete (safety layers and/or final layer in tunnels and trenches and on rock-faces, walls of water channels, etc.). The advantages of Mapefibre ST42 include ease of handling and loading into mixers and a low specific weight per cubic meter, which also makes this technology competitive from a logistic and site management point of view. Mapefibre ST42 are also resistant to alkalis and do not corrode, during both storage phase and once added to the concrete mix, even in aggressive environments. Mapefibre ST42 are characterized by a special surface treatment which guarantees excellent grip to the cementitious paste and an even distribution within the concrete mix.

	Product Code	Packaging
Canada	8202702	Bag:1.8 kg

Mapefibre™ ST55

Macro Polyolefin Fibers for High-Ductility Concrete

Mapefibre ST55 are macro synthetic fibers with an embossed surface to help obtain a high level of adhesion in the cement matrix, thereby increasing the ductility of concrete and shotcrete in the post-failure phase. The use of a new generation polyolefin compound provides Mapefibre ST55 with a high level of resistance to attack from carbon dioxide and products containing chlorine. The fibers are also resistant to highly alkaline environments and provide the concrete with long-lasting structural performance.

	Product Code	Packaging
Canada	6501427	Box: 8 x 1.5 kg bag

Dynamon® EW10

Slump-Retaining Admixture

Dynamon EW is a polymeric slump-retaining admixture designed to stabilize the concrete consistency for two hours or more, with little or no effect on set time at the recommended dosage. Dynamon EW is engineered using time-release polymer-based components in order to maximize slump-retention with minimal impact on set time. Because the time-release dynamic is strongly influenced by the job-specific cement chemistry, there are three distinct products available. The appropriate selection (10, 11, or 12) may be verified in conjunction with MAPEI Technical Services. Dynamon EW conforms to ASTM C 494 Type S and CSA A23.1.

	Product Code	Packaging
Canada	2133501	Bulk (L)
	2133518	Bucket: 18 L
	2133578	Drum: 208 L
	2133585	Tote: 1 041 L



Dynamon® EW11

Slump-Retaining Admixture

Dynamon EW is a polymeric slump-retaining admixture designed to stabilize the concrete consistency for two hours or more, with little or no effect on set time at the recommended dosage. *Dynamon EW* is engineered using time-release polymer-based components in order to maximize slump-retention with minimal impact on set time. Because the time-release dynamic is strongly influenced by the job-specific cement chemistry, there are three distinct products available. The appropriate selection (10, 11, or 12) may be verified in conjunction with MAPEI Technical Services. *Dynamon EW* conforms to ASTM C 494 Type S and CSA A23.1.

Dynamon® EW12

Slump-Retaining Admixture

Dynamon EW is a polymeric slump-retaining admixture designed to stabilize the concrete consistency for two hours or more, with little or no effect on set time at the recommended dosage. *Dynamon EW* is engineered using time-release polymer-based components in order to maximize slump-retention with minimal impact on set time. Because the time-release dynamic is strongly influenced by the job-specific cement chemistry, there are three distinct products available. The appropriate selection (10, 11, or 12) may be verified in conjunction with MAPEI Technical Services. *Dynamon EW* conforms to ASTM C 494 Type S and CSA A23.1.



Mapeshield™ CI 300 [NA]

Corrosion-Inhibiting Admixture for Concrete

Mapeshield CI 300 is a liquid corrosion-inhibiting admixture based on calcium nitrite. *Mapeshield CI 300* inhibits the onset of corrosion of reinforcing steel caused by chlorides typically present in de-icing material. *Mapeshield CI 300* meets the requirements of ASTM C494 as a Type C.

	Product Code	Packaging
Canada	2135501	Bulk (L)
	2135518	Bucket: 18 L
	2135578	Drum: 208 L
	2135585	Tote: 1 041 L

	Product Code	Packaging
Canada	2135601	Bulk (L)
	2135618	Bucket: 18 L
	2135678	Drum: 208 L
	2135685	Tote: 1 041 L

	Product Code	Packaging
Canada	1971201	Bulk (L)
	1971218	Bucket (18 L)
	1971278	Drum (208 L)
	1971285	Tote (1 041 L)

FIBER SOLUTIONS FOR INDUSTRIAL CONCRETE FLOORING

Macro Synthetic Fibers for Concrete

Fibrillated Micro Synthetic Fibers for Concrete

Monofilament Micro Synthetic Fibers for Concrete

Macro Synthetic Fibers for High-Ductility Concrete

Macro Synthetic Fibers for Shotcrete Applications

High-Performance Monofilament Micro Synthetic Fibers for Concrete



Functionality is the main requirement for **concrete flooring** in industrial and commercial environments. In addition to a very high aesthetic quality, MAPEI products provide excellent flatness and dimensional stability, partially or completely eliminating the need for traditional metal reinforcement and contraction joints.

For more details, visit www.mapei.ca or contact 1-800-361-9309.



WHERE CONCRETE MEETS TECHNOLOGY



From the lab to the field, MAPEI knows concrete inside and out. Along with offering a complete range of admixtures for concrete, our team can satisfy the high-performance demands of our customers with custom-manufactured products.

With state-of-the-art laboratories and production facilities throughout North America, our experts are equipped to develop and deliver innovative, technology-driven solutions to our customers with unmatched service and technical support.



MAPEI Canada

MAPEI Inc.

2900 Francis Hughes
Laval, (Québec)
H7L 3J5

Technical Services

1-800-361-9309

Customer Service

1-800-42-MAPEI (1-800-426-2734)

Copyright ©2022 by MAPEI Inc. ("MAPEI") and all rights are reserved. All intellectual property rights and other information contained in this document are the exclusive property of MAPEI (or its parent or related companies), unless otherwise noted. No part of this document may be reproduced or transmitted in any form without the prior written consent of MAPEI.

Printed in the USA

