



# Corrosion Protection and Solutions





## A WORLDWIDE LEADER

Originally established in 1937, today MAPEI is a privately owned global corporation headquartered in Milan, Italy, with 89 subsidiaries including 81 plants in 36 countries. The company specializes in manufacturing chemical products for building, including waterproofing products, specialty mortars and admixtures for concrete, products to restore historic buildings, and decorative and protective coatings for concrete surfaces. In addition, MAPEI is a world leader in the manufacturing of mortars, grouts, adhesives and complementary products for installing all types of floor and wall coverings. MAPEI Group chose Canada for its first steps away from home, opening the Laval, Québec, plant in 1978 as MAPEI Inc. MAPEI's Canadian footprint currently spans over 4,600 km, with production facilities in Québec, Ontario and British Columbia and a distribution center in Alberta.



## PRODUCT LINES OF CANADA

 **FLOOR COVERING** INSTALLATION SYSTEMS

 **CONCRETE RESTORATION** SYSTEMS

 **PRODUCTS FOR WOOD FLOORING**

 **WATERPROOFING** SYSTEMS

 **ADMIXTURES FOR CONCRETE**

 **PRODUCTS FOR UNDERGROUND CONSTRUCTION (UTT)**

 **PRODUCTS FOR SPORTS FLOORING**

 **TILE & STONE** INSTALLATION SYSTEMS

 **PRODUCTS FOR STRUCTURAL STRENGTHENING**

 **CEMENTITIOUS AND RESIN FLOORING** SYSTEMS

 **CEMENT ADDITIVES**



## SUPERIOR PRODUCTS

### A Complete Range of Products

MAPEI produces the most innovative products for the construction market. More than 5,500 products globally (adhesives, sealants, mortars, admixtures, latex, etc.) are manufactured in MAPEI's plants, which produce the world's most complete range of building products. Diversified, high-quality chemical products – from powdered adhesives, to liquid and paste products, to polymers – are created to meet the needs of more than 66,000 customers around the world.

### Quality Control

MAPEI is an ISO 9001-2000 certified company. Its products are produced according to exacting standards, strictly adhering to process and procedural guidelines with documented compliance. This rigid production format is vigilantly followed to ensure that every product is produced uniformly from batch to batch.



## PROFESSIONAL SUPPORT NETWORK

### Knowledgeable Sales Force

MAPEI offers the largest, most highly trained sales force within the industry to serve your needs for product application/installation recommendations. Its sales representatives are focused on supporting you with product knowledge, product demonstrations, product information, marketing support materials and other relevant tools to help you generate sales.

### Technical Expertise

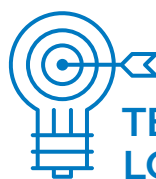
An in-house Technical Services Call Center responds to customers' telephone inquiries with answers to installation challenges in real time. In addition, MAPEI can offer field support for job startups, product training and on-site problem resolution.



### Customer Service Plus

MAPEI's standards for customer service are best-in-class. Our leadership includes such service innovations as:

- Customer-friendly, efficient processes
- One-call resolution
- Employee commitment to effective customer dialog



## TECHNOLOGY LOGOS INDEX

Corrosion Inhibitor Enhanced products feature proprietary additives that fortify the passivation layer on embedded reinforcing steel, enhancing its resistance to corrosion.



### Innovative Research & Development

We have always been highly committed to this sector. Our research scientists work within a global network comprising 31 centers, with our Corporate Research Centre in Milan acting as a hub to coordinate the activities of all the other centers and as a central analysis laboratory. The United States has five centers, and Canada has one. All equipped with cutting-edge equipment, the centers collaborate continuously with universities as well as scientific and industrial research institutes.

The research and development laboratories also provide support for our Technical Services Division to help provide solutions for even the most complex requests from our clients. Working alongside these centers are our quality-control laboratories, which are present in all the MAPEI Group's production facilities.

### Best-Backed<sup>SM</sup> Warranty Program

To bring it all together, MAPEI complements the industry's best products with simple, easy-to-understand requirements for a variety of warranty options.





**Planiseal® WR**

**Penetrating, Water-Based, Silane/  
Siloxane Water Repellent**

*Planiseal WR* is a silane/siloxane-blend, water-repellent, transparent sealer that provides resistance to water, dirt and chlorides.



**Planiseal® WR 40**

**Water-Based, 40%-Silane, Penetrating  
Water Repellent**

*Planiseal WR 40* is a water-based, 40%-silane, penetrating water repellent and sealer designed to protect concrete and masonry against moisture/chloride intrusion.



**Planiseal® WR 100**

**Clear, 100%-Silane, Penetrating Water  
Repellent**

*Planiseal WR 100* is a clear, high-performance, 100%-silane, penetrating water repellent and sealer designed to provide outstanding water repellency on concrete and masonry. It penetrates deeply, protecting new and existing substrates against moisture/chloride intrusion.

	Product Code	Packaging
Canada	46468	Pail: 5 U.S. gals. (18.9 L)

	Product Code	Packaging
Canada	0776719	Pail: 5 U.S. gals. (18.9 L)
	0776778	Drum: 55 U.S. gals. (208 L)

	Product Code	Packaging
Canada	0776819	Pail: 5 U.S. gals. (18.9 L)
	0776878	Drum: 55 U.S. gals. (208 L)



### Primer SN™

#### Two-Component, Filled, Epoxy Primer

Primer SN is a two-component, filled, epoxy primer specifically designed to enhance adhesion of cement-based decorative and multilayer flooring, such as MAPEI's *Mapecfloor*™ products, *Ultratop*® products, *PlaniLevel*™ products and *Planitop*® EL.



### Primer SN™ Fast

#### Fast-Setting, Two-Component, Fillerized, Epoxy Primer

Primer SN Fast is a fast-setting, two-component, fillerized epoxy primer specifically designed to enhance adhesion of multi-layer flooring systems, such as MAPEI's *Mapecfloor*™ polyurethane and epoxy systems as well as urethane cement screeds.



### Mapecfloor™ PU Primer

#### Two-Component Polyurethane Primer

Mapecfloor PU Primer is a two-component, polyurethane-based primer that can be used for initial application of *Mapecfloor* parking deck systems or as a recoat primer for already installed polyurethane deck systems.

	Product Code	Packaging
Canada	0214311	Part A, Pail: 2.17 U.S. gals. (8.21 L)
	0214411	Part B, Jug: 0.83 U.S. gals. (3.14 L)

	Product Code	Packaging
Canada	0214711	Part A, Pail: 2.17 U.S. gals. (8.21 L)
	0214811	Part B, Can: 0.83 U.S. gal. (3.14 L)

	Product Code	Packaging
Canada	2582614	Part A, Pail: 1.79 U.S. gals. (6.78 L)
	2582714	Part B, Pail: 1.82 U.S. gals. (6.89 L)



**Mapefloor™ PU 400 FC**

**Two-Component, Fast-Curing Polyurethane Basecoat for Mapefloor Parking Deck System**

Mapefloor PU 400 FC is a two-component, fast-curing, polyurethane basecoat specifically designed for use as a waterproofing membrane for elevated concrete surfaces where the Mapefloor parking deck system is utilized. With its high elongation and crack-bridging properties, Mapefloor PU 400 FC is suited as a basecoat layer on concrete substrates subject to vibration.



**Mapefloor™ Finish 450**

**Two-Component, Aliphatic Polyurethane Topcoat**

Mapefloor Finish 450 is a two-component, solvent-free, aliphatic polyurethane topcoat specifically designed to provide a protective wear coat for elevated concrete surfaces in areas that are exposed to direct sunlight.



**Mapefloor™ Finish 415 NA**

**Two-Component, Polyurethane Topcoat for Mapefloor Parking Deck System**

Mapefloor Finish 415 NA is a two-component, solvent-free, aromatic polyurethane topcoat specifically designed to provide a protective wear coat for elevated concrete surfaces where the Mapefloor parking deck system is utilized.

	Product Code	Packaging
Canada	6QM1529420	Part A, Pail: 1.08 U.S. gals. (4.09 L)
	2590320	Part B, Pail: 3.9 U.S. gals. (14.8 L)

	Product Code	Packaging
Canada		Kit: 5 U.S. gals. (18.9 L)
		Part A, Pail: 3.52 U.S. gals. (13.3 L)
	47864	#001 Light Gray
	6UA1515713	#002 Medium Gray
	6UA1515913	#003 Concrete Gray
	6UA1515813	#004 Charcoal
	6UA1516013	#005 Black
	6UA1515613	#006 Tan
	6UA1536913	#007 Red
	6UA1515513	#008 Green
	6UA1516113	#009 Dark Maple
	47853	Part B, Jug: 1.4 U.S. gals. (5.30 L)

	Product Code	Packaging
Canada		Part A, Pail: 3.75 U.S. gals. (14.2 L)
	6UB1516219	Light Gray
	6UB1536919	Red
	6UB1515619	Tan
	6UB1516019	Black
	6UB004719	Charcoal
	6UB1515919	Concrete Gray
	6UB1516119	Dark Maple
	6UB1515519	Green
	6UB1515719	Medium Gray
	6UB9999919	Part B, Jug: 1.25 U.S. gals. (4.73 L)



### Mapeshield™ CI 100

#### Surface-Applied Corrosion Inhibitor

*Mapeshield CI 100* is a surface-applied corrosion inhibitor designed to penetrate concrete structures and protect embedded steel reinforcement. *Mapeshield CI 100* delays the corrosion process and reduces overall corrosion activity.



### Mapeshield™ CI 110

#### Surface-Applied Corrosion Inhibitor with Integrated Water Repellant

*Mapeshield CI 110* is a surface-applied corrosion inhibitor, with an integrated moisture repellant, designed to penetrate concrete and protect embedded steel reinforcement. *Mapeshield CI 110* delays the corrosion process, reduces overall corrosion activity and creates a water-repelling barrier on the surface of the concrete.



### Mapeshield™ I

#### Pure Zinc Galvanic Anode

*Mapeshield I* is a pure zinc anode for cathodic protection of reinforcing steel against corrosion in new, reinforced structures as well as structures requiring repair.

	Product Code	Packaging
Canada	2098119	Pail: 5 U.S. gals. (18.9 L)
	2098178	Drum: 55 U.S. gals. (208 L)

	Product Code	Packaging
Canada	2098419	Pail: 5 U.S. gals. (18.9 L)
	2098478	Drum: 55 U.S. gals. (208 L)

	Product Code	Packaging
Canada	2099024	<i>Mapeshield I 10/10</i> , 24 per carton
	2099124	<i>Mapeshield I 10/20</i> , 24 per carton
	2099212	<i>Mapeshield I 30/10</i> , 12 per carton
	2099312	<i>Mapeshield I 30/20</i> , 12 per carton
	2099650	<i>Mapeshield I 70</i> , 50 per carton
	2099550	<i>Mapeshield I 105</i> , 50 per carton



### Mapefer™ 1K

#### Corrosion-Inhibiting Coating for Reinforcing Steel

Mapefer 1K is a one-component, anti-corrosion coating based on unique polymers, cementitious binders and corrosion inhibitors. Mapefer 1K is specially formulated for application on properly prepared reinforcing steel to inhibit oxidation and rust formation.

	Product Code	Packaging
Canada	276645	Bag: 10 lbs. (4.54 kg)



### Planibond® 3C

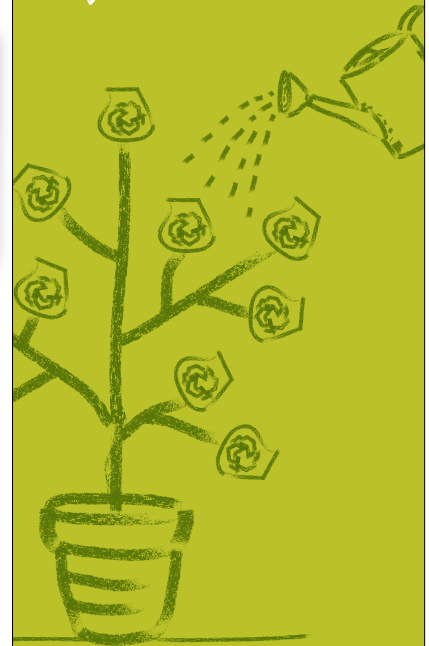
#### Three-Component, Cementitious Corrosion Inhibitor and Bonding Agent

Planibond 3C is a three-component, cementitious, moisture-tolerant, water-based, epoxy-modified corrosion inhibitor and bonding agent.

	Product Code	Packaging
	36364000	Large kit (Parts A and B): 10.8 lbs. (4.90 kg)
Canada	36344000	Part C: 44 lbs. (20.0 kg)
	1964007B	Small kit: 1.74 U.S. gals. (6.59 L)



Building a  
**SUSTAINABLE**  
future together



**Sustainability** is part of **everything** we do. **MAPEI** has always been **fundamentally committed** to sustaining the **environment** for today and tomorrow. We invest in R&D to ensure that our products are **safe, reliable, durable** and have the **lowest impact possible on human health and the environment**.

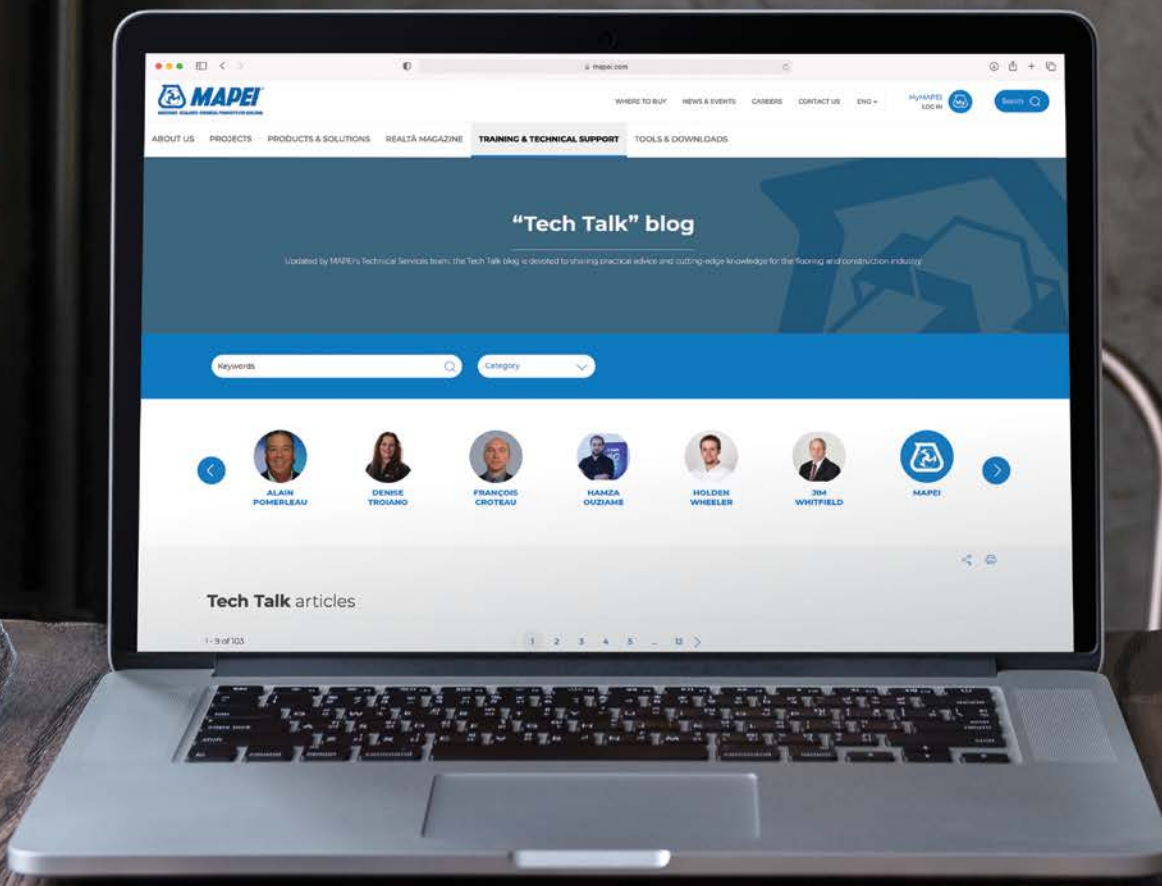
Learn about our other Concrete Restoration products:





# MAPEI<sup>®</sup>

## TECH TALK



Check our latest **“Tech Talk”** blog for insights and perspectives on flooring and the construction industry.

Visit





MAPEI Canada

**MAPEI Inc.**

2900 Francis-Hughes Avenue  
Laval, QC, H7L 3J5

**Technical Services**

1-800-361-9309

**Customer Service**

1-800-42-MAPEI (1-800-426-2734)

Copyright ©2022 by MAPEI Inc. ("MAPEI") and all rights are reserved. All intellectual property rights and other information contained in this document are the exclusive property of MAPEI (or its parent or related companies), unless otherwise noted. No part of this document may be reproduced or transmitted in any form without the prior written consent of MAPEI.

Printed in the USA.

