

SYSTEM SOLUTIONS GUIDE

HEALTHCARE





INTRO	02
EXTERIOR	
Below-grade waterproofing: Positive-side construction	06
Building veneer: Tile or stone	07
Valet/transportation/ambulance area: Tile or stone	08
Parking deck: System for heavy-duty vehicular traffic	09
Building facade: Protective and decorative acrylic coatings	10
INTERIOR	
Patient room: Homogeneous sheet vinyl	11
Patient room: Luxury vinyl plank/tile	12
Surgical room/laboratory: Homogeneous sheet vinyl	13
Surgical room/laboratory: Virgin rubber sheet	14
Hallway area: Direct-bond carpet	15
Commercial kitchen: Quarry tile	16
Cafeteria: Luxury vinyl tile/plank	17
Office area: Carpet tiles	18
Lobby: Tile or stone	19
Common area: Decorative concrete	20
Large thin porcelain tile panel: Wall/floor tile over tile	21
Elevator cab floor: Tile or stone over steel	22
Service elevator cab floor: Rubber over steel	23
Elevator cab floor: Luxury vinyl plank/tile over steel using plywood	24
ADA bathroom and shower room: Tile	25
ADA bathroom (outside of shower): Sheet vinyl	26
Physical therapy room: Rubber flooring	27
Patient/visitor waiting area: Carpet tiles	28
Office area: Direct-bond carpet	29
Maintenance/electrical room: Vinyl composition tile	30
High moisture area: Epoxy moisture barriers	31
Fast-track installations on green concrete with high moisture issues: Epoxy moisture barriers	32
Concrete with moderate to high moisture issues: Resilient flooring	33
Hospital ADA private shower and bathroom: Non-slip ceramic or stone tile	34
Common-area bathroom walls: Ceramic or stone tile	35
Cafeteria: Ceramic or stone tile	36
Gift shop / snack bar: Ceramic or stone tile	37
PRODUCT INDEX	39

Fast track

Healthcare settings generate impressive revenue per square foot (meter) – but only once the doors are open. These buildings are often designed with a compressed schedule in mind. MAPEI's FastTrack Ready™ products are designed to be faster-setting and to deal with the moisture issues that “green” concrete can pose. We offer concrete additives that can improve the performance of the concrete you select. Downtime is not an option with construction of healthcare buildings. MAPEI is there from the first stages of construction,

Healthcare construction is booming, and each project brings specific challenges. MAPEI is your partner in answering these important challenges:

protecting against water intrusion with our below-grade waterproofing products. Best of all, MAPEI's team will work with you to make sure that the products you select follow your schedule.

Accessibility

Floors, elevators and exterior areas for healthcare applications must not impose unnecessary barriers. In addition to foot traffic, healthcare settings will endure wheelchairs, canes, prosthetics, walkers, crutches, rolling beds and stretchers, carts and ambulances. MAPEI is up to the task of providing flat, durable surfaces with a complete line of levelers, adhesives, mortars and coatings. Our team is skilled at finding innovative solutions to complex problems.

Warranty

MAPEI backs its products with industry-leading Best-BackedSM warranties that stand long after the general contractor has handed over the keys to the building. Visit our Website at www.mapei.com for our 10-year, 25-year and lifetime warranties.

Building design

Gone are the dreary green halls of the past. Today's healthcare facilities rival hotels and resorts, because a healthy and beautiful environment contributes to healing. Common areas are bright and open, featuring high-end finishes. MAPEI has worked with all the major floor and wall coverings on the market today, experience that will be your best asset in ensuring installations that are as trouble-free as they are beautiful.

Our high-performance levelers and adhesives ensure that the floors are up to the task, and we stay with you until the final finishes are in place. We also offer concrete finishes that can be polished, colorful (and durable) coatings for building exteriors, and a beautiful array of grout choices for tile installations.

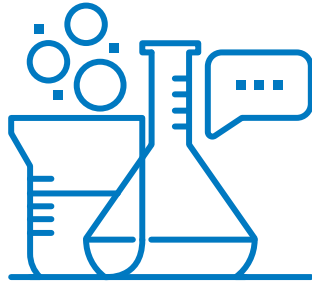
This brochure addresses many different types of areas within healthcare facilities (hospitals, physical therapy and nursing). In all of these areas, surfaces must be strong, resistant and durable. At the same time they must be easy to clean and maintain, particularly in clean rooms like laboratories and surgical rooms. Installation materials must always be chosen according to the type of floor or wall covering material to be installed, and the floor or wall covering itself must be suitable for its intended use. MAPEI has always been at the forefront in developing products and system solutions that meet the installation requirements of specific healthcare facilities.

Full-Breadth Product Lines

MAPEI has supplied residential and major commercial projects with total installation solutions for tile and stone, floor coverings and decorative concrete as well as concrete restoration and admixtures for more than 85 years.

1	2	3	4	5
Tile & Stone Installation Systems	UltraCare Stone, Tile, Grout Care and Maintenance Solutions	Floor Covering Installation Systems	Products for Sports Flooring	Products for Wood Flooring
6	7	8	9	10
Concrete Restoration Systems	Products for Structural Strengthening	Products for Underground Construction (UTT)	Admixtures for Concrete	Waterproofing Systems
11	12	13	* USA & Puerto Rico only ** Cementitious products only are available in the USA	
Cement Additives	Products for the Marine Industry*	Cementitious & Resin Flooring Systems**		





Innovative Research & Development

Worldwide, more than 12% of MAPEI employees are involved in the development of new technologies and product innovations, keeping our customers at the forefront of the construction industry. The company has taken the additional initiative of focusing its R&D efforts on environmentally sustainable solutions.

To remain on the cutting edge of innovation, MAPEI reinvests 5% of its annual revenues into researching and developing new products and technologies. This corporate priority has produced such innovations as:

- High-Hydrated Cement Technology (HCT™), which offers high early strength, excellent workability, ultra fast curing, unmatched long-term durability and efflorescence-free curing.
- Easy Glide Technology™, which offers extreme ease of application, yielding a buttery consistency that reduces fatigue during installation.
- *Ultrabond ECO®* product formulations beginning in the 1980s with extremely low emissions of volatile organic compounds (VOCs) for improved indoor air quality.
- FastTrack Ready products, which reduce the required steps of an installation and/or perform more quickly than current methods.
- High-Transfer Technology™ products, which offer superior mortar-wetting properties to promote improved mortar transfer between the tile and the substrate. This technology

helps to deliver ultimate coverage to maximize bond strength performance and is ideal for lippage control system applications.

Quality Control and Efficient Manufacturing

In North America, most MAPEI facilities have been certified to ISO 9001 quality management and ISO 14001 environmental management standards. Our products are produced according to exacting standards, strictly adhering to process and procedural guidelines with documented compliance. This rigid production format is vigilantly followed to ensure that every product is produced uniformly from batch to batch.

Powerful, Efficient and Sustainable Manufacturing

Cutting-edge production technology is used in MAPEI's production facilities, where the entire manufacturing process is optimized by continual quality control, from raw materials to final packaging.

MAPEI's production statistics are impressive: 86 production facilities in 35 countries on five continents. Along with the 27,900 tons of finished products that are manufactured at our production facilities every day, we receive just as many tons of raw materials to keep our sites supplied around the world.

MAPEI's production efforts are reflected through optimization of logistics costs, close proximity to our customers, and a guarantee of maximum efficiency of production processes while respecting the environment.



Warranty Program

To bring it all together, MAPEI complements the industry's best products with simple, easy-to-understand requirements for comprehensive warranties – allowing you to build systems within desired warranty timeframes.

MAPEI's advanced systems give you the built-in confidence provided by superior in-field technical support and the Best-BackedSM warranties in the business.



Professional Support

Knowledgeable Sales Force

MAPEI offers the largest, most highly trained sales force within the industry to serve your needs for product application/installation recommendations. Its representatives are focused on supporting you with product knowledge, product demonstrations, product information, marketing support materials and other relevant tools to help you generate business.

Technical Expertise

An in-house Technical Services Product Support Team responds to customers' telephone inquiries with answers to installation challenges in real time. In addition, Regional Technical Services Representatives provide field support, including jobsite visits, product training and advice on product selection.

Call us at 1-800-992-6273 (flooring, U.S. and Puerto Rico), 1-888-365-0614 (non-flooring, U.S. and Puerto Rico) or 1-800-361-9309 (Canada).

Customer Service Plus

MAPEI's standards for customer service are best-in-class. Our leadership includes such service innovations as:

- Customer-friendly, efficient processes
- One-call resolution
- Employee commitment to effective customer dialog

Call us at 1-800-42-MAPEI (1-800-426-2734).



EXTERIOR

BELOW-GRADE WATERPROOFING

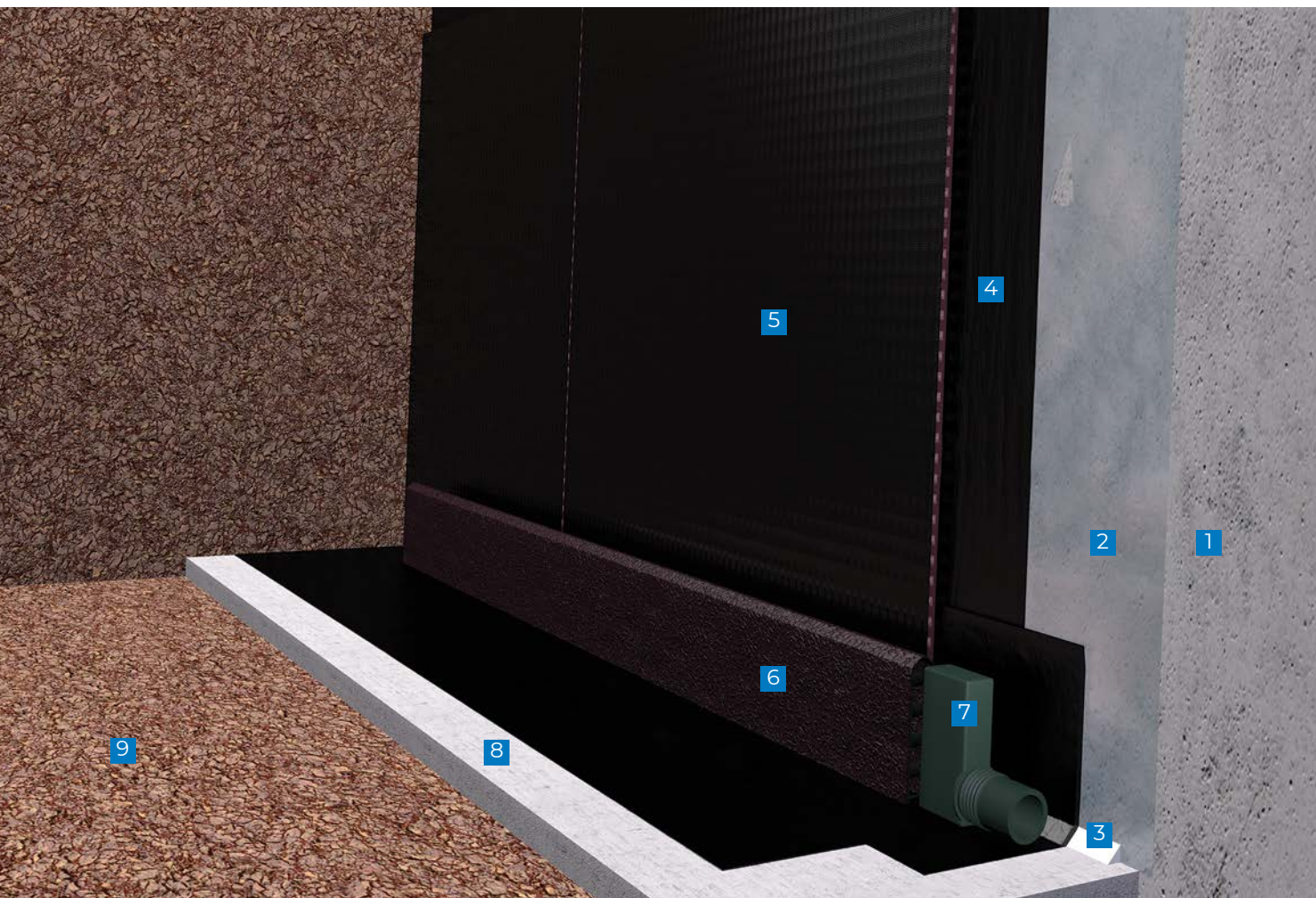
POSITIVE-SIDE CONSTRUCTION

Second only to fire, water has the most deleterious impact on a structure and its contents. As such, MAPEI offers positive-side waterproofing systems that are installed on the outboard side of the structure to keep water out of the building. The *Planiseal Membrane SA* system, based on a self-adhered waterproofing membrane, is a simple and effective means of accomplishing this goal.

Issue: Prevent water intrusion into buildings following the construction of their foundation walls

Solution: Positive-side waterproofing, through the *Planiseal Membrane SA* waterproofing system, to prevent water intrusion

- 1 Concrete
- 2 *Mapebond 710*
(or *Mapebond 720*)
- 3 *Mapectex P2 NS*
- 4 *Planiseal Membrane SA*
- 5 *Mapedrain 25*
- 6 *Mapedrain TD*
Drainage Composite
- 7 *Mapedrain TD Fittings*
(end outlet)
- 8 Concrete footing
- 9 Soil



EXTERIOR

BUILDING VENEER

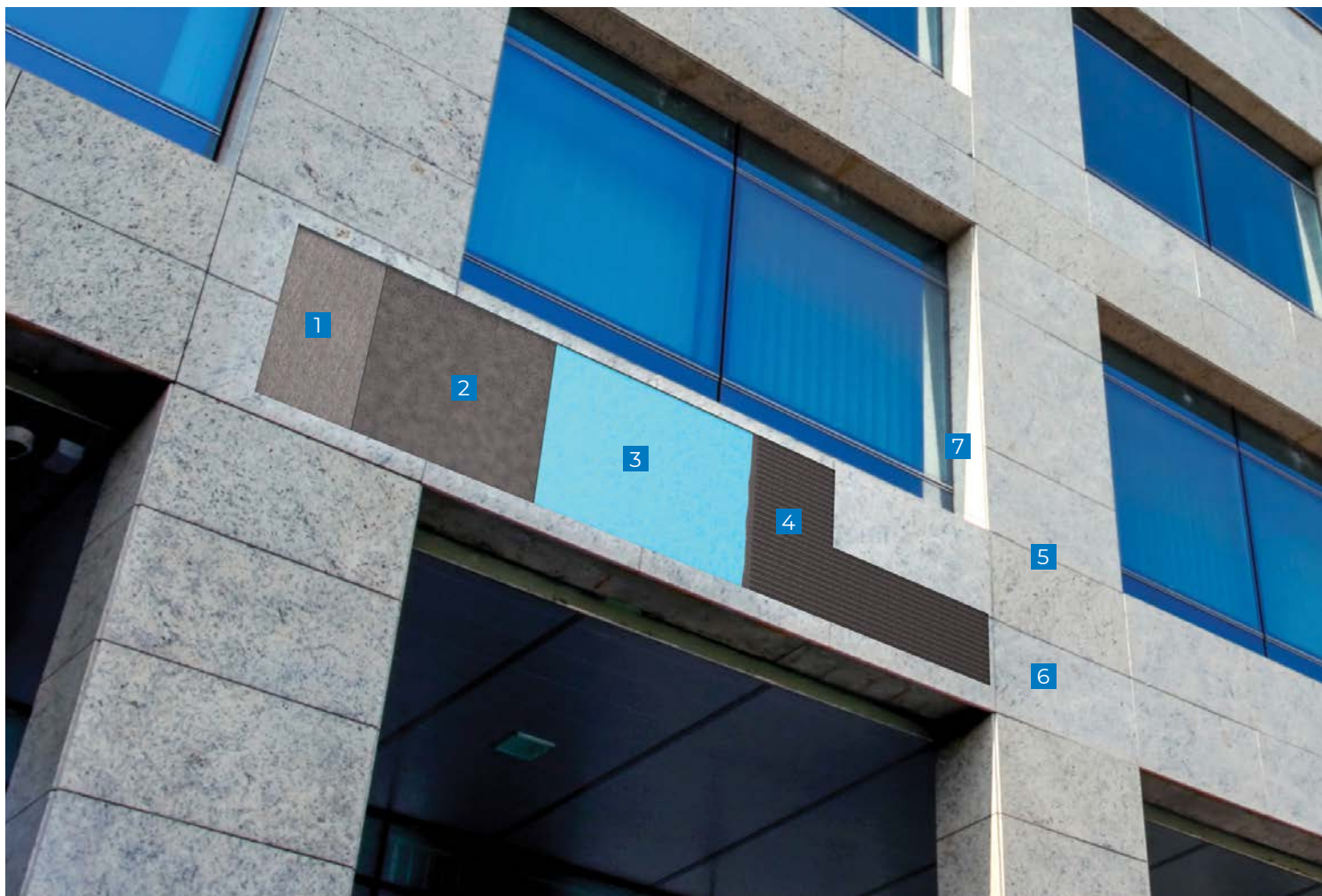
TILE OR STONE

Building exteriors are subjected to a wide variety of conditions. From UV exposure to high wind loads to freezing conditions, the products for the outside of the building must be up to the task. Tile and stone have historically been the exterior cladding of choice for demanding applications.

Issues: Water causing efflorescence; freeze/thaw concerns

Solution: Installation material designed to not contribute to efflorescence and to resist freeze/thaw damage

- 1 Concrete
- 2 *Modified Mortar Bed* over slurry coat
- 3 *Mapelastic AquaDefense* (or *Mapelastic Turbo*)
- 4 *Granirapid* System
- 5 Ceramic tile (or stone)
- 6 *Ultracolor Plus FA*
- 7 *Mapesil T Plus*



EXTERIOR

VALET/ TRANSPORTATION/ AMBULANCE AREA

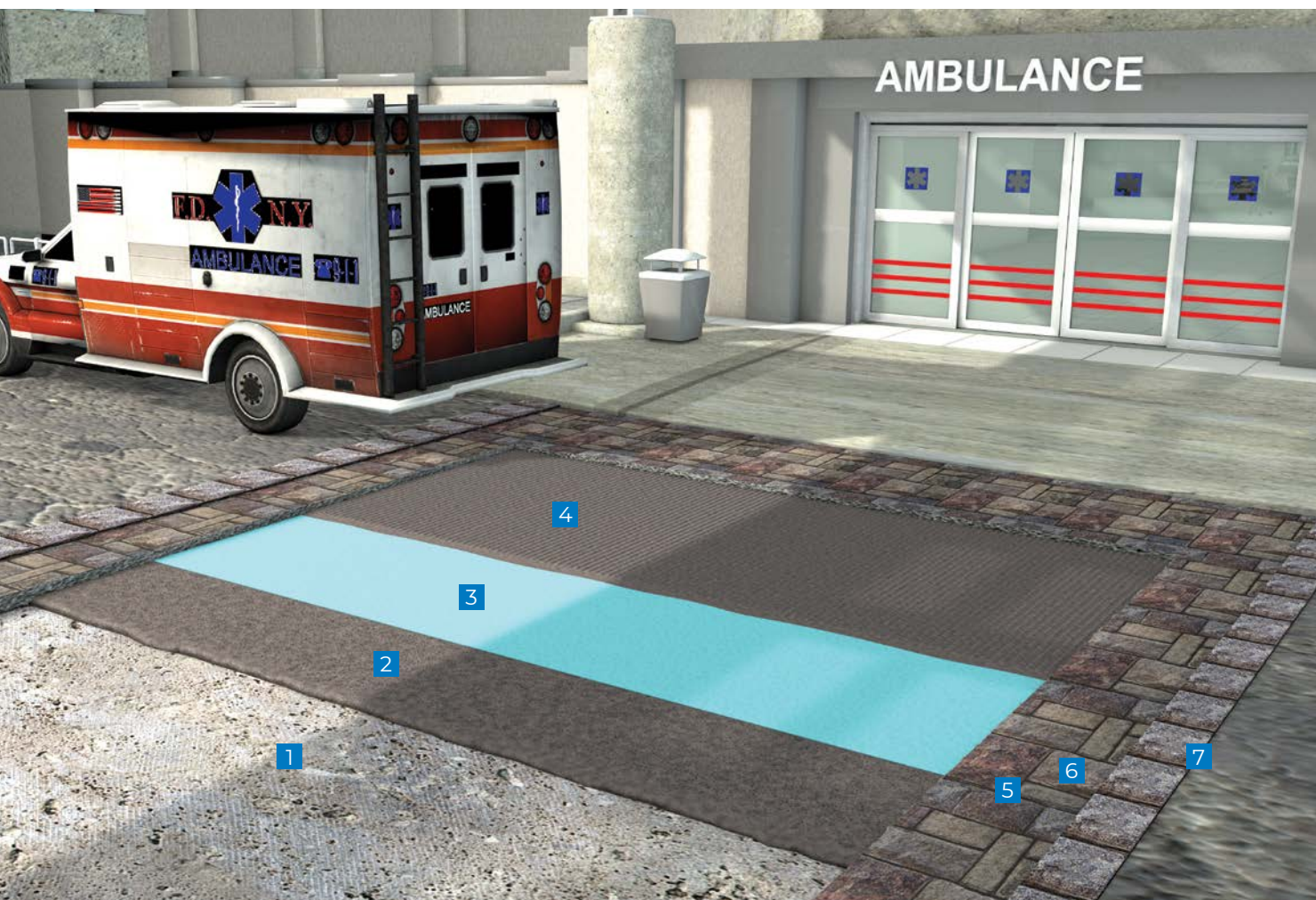
TILE OR STONE

Many healthcare settings now include valet parking as part of the customer experience. These areas are often tiled for durability and ease of maintenance. Ambulance traffic is also typically accommodated in much the same manner, with covered porticos and exterior tile installations.

Issues: Vehicular traffic; weather; salts; efflorescence

Solutions: Installation materials that do not contribute to efflorescence and that resist adverse conditions

- 1 Concrete
- 2 *Modified Mortar Bed* over slurry coat
- 3 *Mapelastic AquaDefense* (or *Mapelastic Turbo*)
- 4 *Granirapid* System
- 5 Ceramic tile (or stone)
- 6 *Ultracolor Plus FA*
- 7 *Mapesil T Plus*



EXTERIOR

PARKING DECK

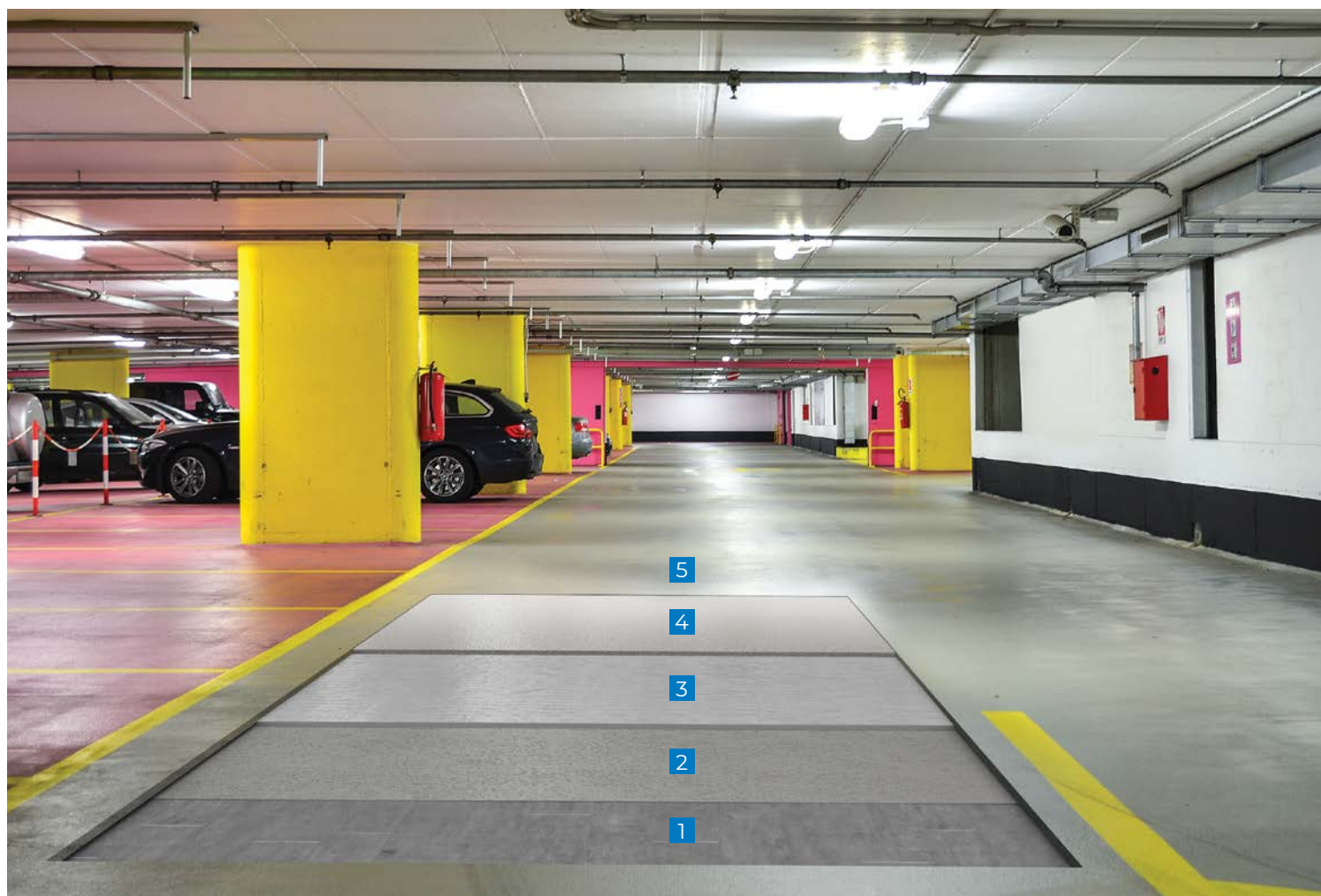
SYSTEM FOR
HEAVY-DUTY
VEHICULAR TRAFFIC

Parking decks and other exterior, pedestrian and vehicular traffic areas require rugged products developed specifically for the unique conditions that they experience. MAPEI's *Mapecfloor* family of products is engineered for parking decks and the demands of their installations.

Issues: Rolling-wheel traffic; low-speed turns

Solution: A highly bonded system of products protecting the substrate and resisting the force of rolling loads and turns

- 1 Existing concrete
- 2 *Primer SN*
- 3 *Mapecfloor PU 400 FC*
- 4 *Mapecfloor Finish 415 NA* with sand broadcast
- 5 *Mapecfloor Finish 415 NA*



EXTERIOR

BUILDING FACADE

PROTECTIVE AND
DECORATIVE ACRYLIC
COATINGS

Exterior facades face many challenges. They are subjected to intense sunlight, temperature variations, carbon dioxide, water, salt and wind. MAPEI's *Elastocolor* products are designed to address these conditions in an unlimited array of colors.

Issues: Need for an attractive, durable exterior coating that seals out water/salt and is easy to clean

Solution: A system that is formulated to seal, protect and beautify

- 1 *Mapeshield I*
- 2 *Planitop XS* (or *Planitop 12 SR*)
- 3 *Mapeflex PI FT*
- 4 *Elastocolor Primer AR*
- 5 *Elastocolor Coat*



INTERIOR

PATIENT ROOM

HOMOGENEOUS
SHEET VINYL

Patient rooms have specific flooring requirements primarily due to heavy equipment rolling across them and bed wheels that rotate repeatedly in a very small area. MAPEI provides systems of high-strength levelers and adhesives that stay put even when pressure is exerted on them.

Issues: Patient beds with wheels that swivel and rock in a small area

Solution: An adhesive that keeps vinyl in place and minimizes the potential for dents

- 1 Concrete
- 2 *Primer T*
- 3 *Ultraplan 1 Plus*
- 4 *Ultrabond ECO 360*
- 5 Sheet vinyl
- 6 *Ultrabond ECO 560*
- 7 Cove base



INTERIOR

PATIENT ROOM

LUXURY VINYL PLANK/TILE

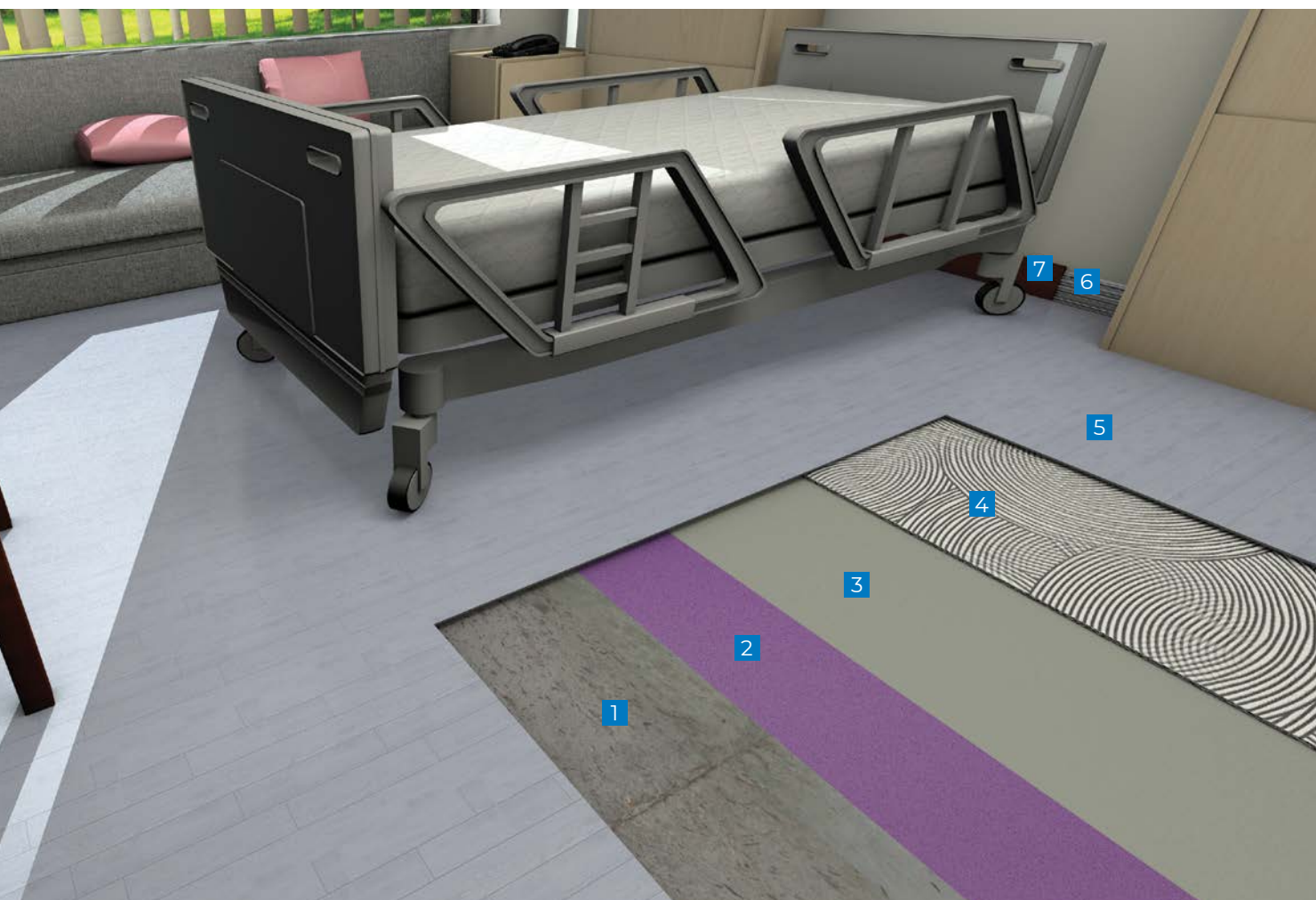
Patient rooms with luxury vinyl plank (LVP) and luxury vinyl tile (LVT) have challenges similar to those of sheet vinyl, heavy equipment and concentrated rolling loads from beds and gurneys. The adhesives used must stay in place and not move away from the concentrated load.

Issue: Rolling loads

Solution: High-quality adhesive designed for rolling loads

- 1 Concrete
- 2 *Primer T*
- 3 *Ultraplan 1 Plus*
- 4 *Ultrabond ECO 399*
- 5 LVP (or LVT)
- 6 *Ultrabond ECO 575*
- 7 Cove base

For installations over concrete with moisture issues, refer to the section on high moisture on Page 33.



Cleanrooms are some of the most demanding applications for finishes and adhesives. Dust, VOCs and biological contaminants cannot be tolerated in these settings. MAPEI products are designed to work with the finishes of choice for cleanroom applications. Impact and rolling loads also must be addressed from the substrate up. Use this project solution for operating rooms, isolation patient rooms, testing rooms, laboratories (microbiology/epidemiology), computer rooms, bio technology rooms, life science rooms or other areas that are sensitive to environmental contamination.

Issue: Rolling loads

Solution: High-quality adhesive designed for rolling loads

- 1 Concrete
- 2 *Primer T*
- 3 *Novoplan HFL*
- 4 *Ultrabond ECO MS 4 LVT*
- 5 Sheet vinyl

INTERIOR

SURGICAL ROOM/ LABORATORY

HOMOGENOUS
SHEET VINYL



INTERIOR

SURGICAL ROOM/ LABORATORY

VIRGIN RUBBER
SHEET

Surgical rooms and laboratory areas require continual sanitizing with no hidden recesses for microbial contamination..

Issues: Rolling loads; bonding of rubber flooring

Solution: An adhesive designed specifically for hard-to-bond products such as rubber flooring

- 1 Concrete
- 2 *Primer T*
- 3 *Novoplan HFL*
- 4 *Ultrabond ECO 560*
- 5 Virgin rubber sheet

For installations over concrete with moisture issues, refer to the section on high moisture on Page 33.



INTERIOR

HALLWAY AREA

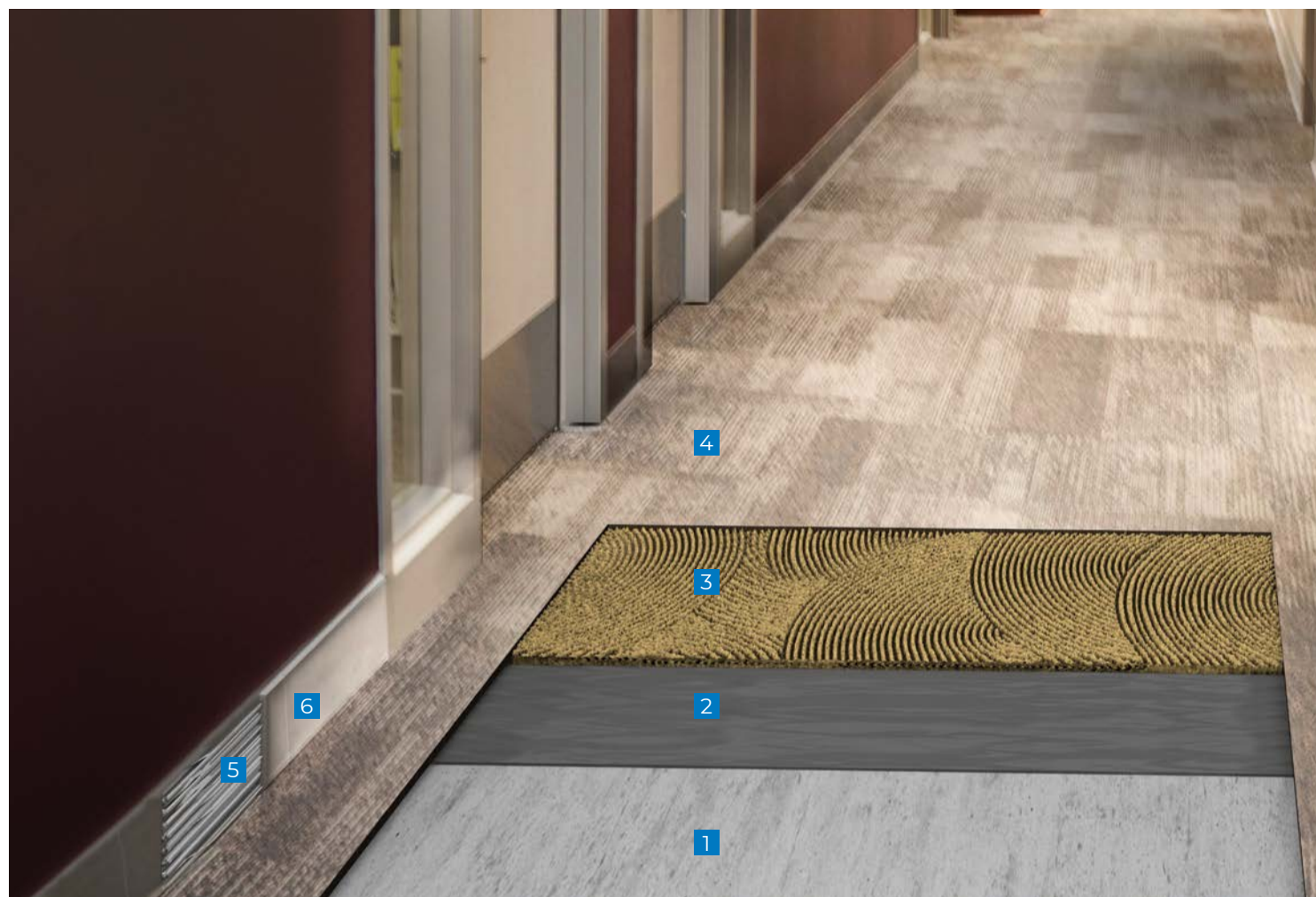
DIRECT-BOND
CARPET

Hallways are heavy-traffic areas where the majority of the traffic will be moving along a set path, time after time. The materials used to flatten and adhere these areas must be designed with a high compressive strength and stay where they are placed, even under heavy traffic conditions.

Issue: Substrates receive a thin layer of patch or skimcoat that must be up to the challenge of heavy foot traffic, cart traffic and carpet cleaning schedules.

Solutions: High-compressive-strength patching products for high-traffic areas

- 1 Concrete
- 2 *Planiprep SC (or Planipatch)*
- 3 *Ultrabond ECO 220*
- 4 Carpet
- 5 *Ultrabond ECO 575*
- 6 Vinyl (or rubber) cove base



INTERIOR

COMMERCIAL KITCHEN

QUARRY TILE

Food preparation areas must be highly resistant to a wide variety of compounds. From food debris to hot oils to sanitizing solutions, the mortars and grouts found in these areas must be up to the environmental demands of a commercial kitchen.

Issues: Chemicals; staining; harsh cleaning

Solution: Industrial-grade and chemical-resistant grout

- 1 Concrete
- 2 *Mapelastic AquaDefense* (or *Mapelastic Turbo*)
- 3 *Kerabond/Keralastic* System
- 4 Quarry tile
- 5 *Kerapoxy IEG CQ*
- 6 *Mapesil T Plus*



INTERIOR

CAFETERIA

LUXURY VINYL TILE/PLANK

Cafeteria floors are commonly finished with vinyl flooring. As luxury vinyl tile (LVT) and luxury vinyl plank (LVP) products have evolved in looks and performance, adhesive systems also have evolved with ease of installation and staying power.

Issue: Fast-track installations of LVT or LVP

Solution: High-quality, fast-setting, easily applied adhesive

- 1 Concrete
- 2 *Planiprep SC* (or *Planipatch*)
- 3 *Ultrabond ECO 399*
- 4 LVT (or LVP)
- 5 *Ultrabond ECO 575*
- 6 Vinyl or rubber cove base

For installations over concrete with moisture issues, refer to the section on high moisture on Page 33.



INTERIOR

OFFICE AREA

CARPET TILES

Carpet tiles are often chosen for aesthetic and maintenance reasons, allowing individual squares of tile to be swapped out. MAPEI offers adhesives that bond when you want them to but release when you need them to.

Issue: Fast-track installations of carpet tiles that can be quickly replaced

Solutions: High-quality, fast-setting, easily applied adhesive

- 1 Concrete
- 2 *Planiprep SC* (or *Planipatch*)
- 3 *Ultrabond ECO 811*
- 4 Carpet tile
- 5 *Ultrabond ECO 575*
- 6 Vinyl or rubber cove base



INTERIOR

LOBBY

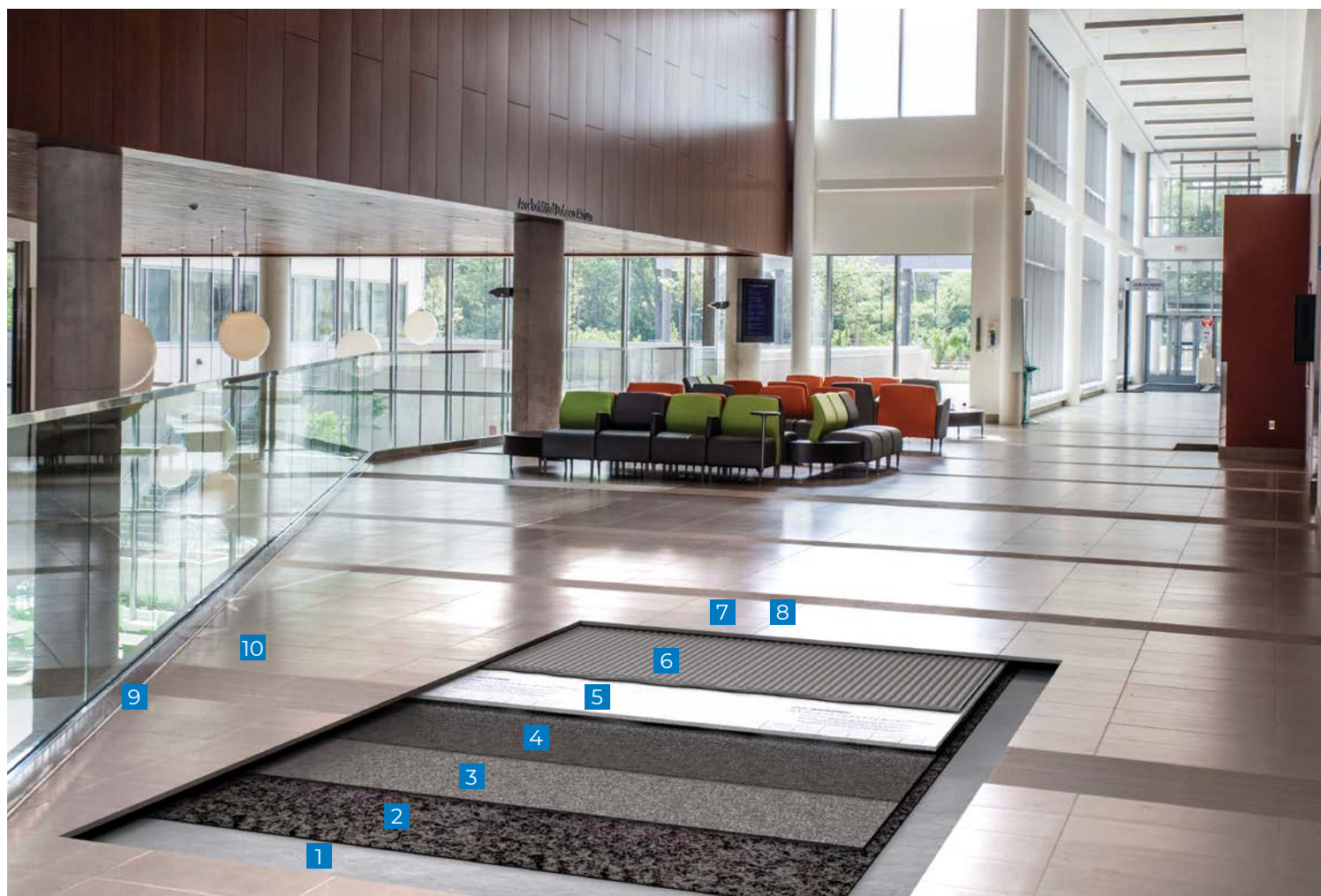
TILE OR STONE

Lobbies and registration areas are often the first impression that a customer has of the building. Increasingly high-end finishes are chosen for lobbies in healthcare facilities in order to provide a beautiful and calming welcome. Porcelain tiles and a wide array of stones are often found in this application. MAPEI's wide array of mortars and grouts secure the desired flooring in place for a trouble-free and long-lasting lobby floor.

Issues: High traffic; pivot area; traffic patterns

Solutions: High-quality installation materials and high-performance grouts that can handle the rigors of the environment

- 1 Concrete
- 2 Cleavage membrane
- 3 *Modified Mortar Bed*
- 4 *MAPEI SM Primer*
- 5 *Mapesonic 2*
- 6 *Keraflex Super*
- 7 Tile (or stone)
- 8 *MAPEI Flexcolor CQ*
- 9 *Mapesil T Plus*
- 10 *UltraCare Penetrating Plus Stone, Tile & Grout Sealer*



INTERIOR

COMMON AREA

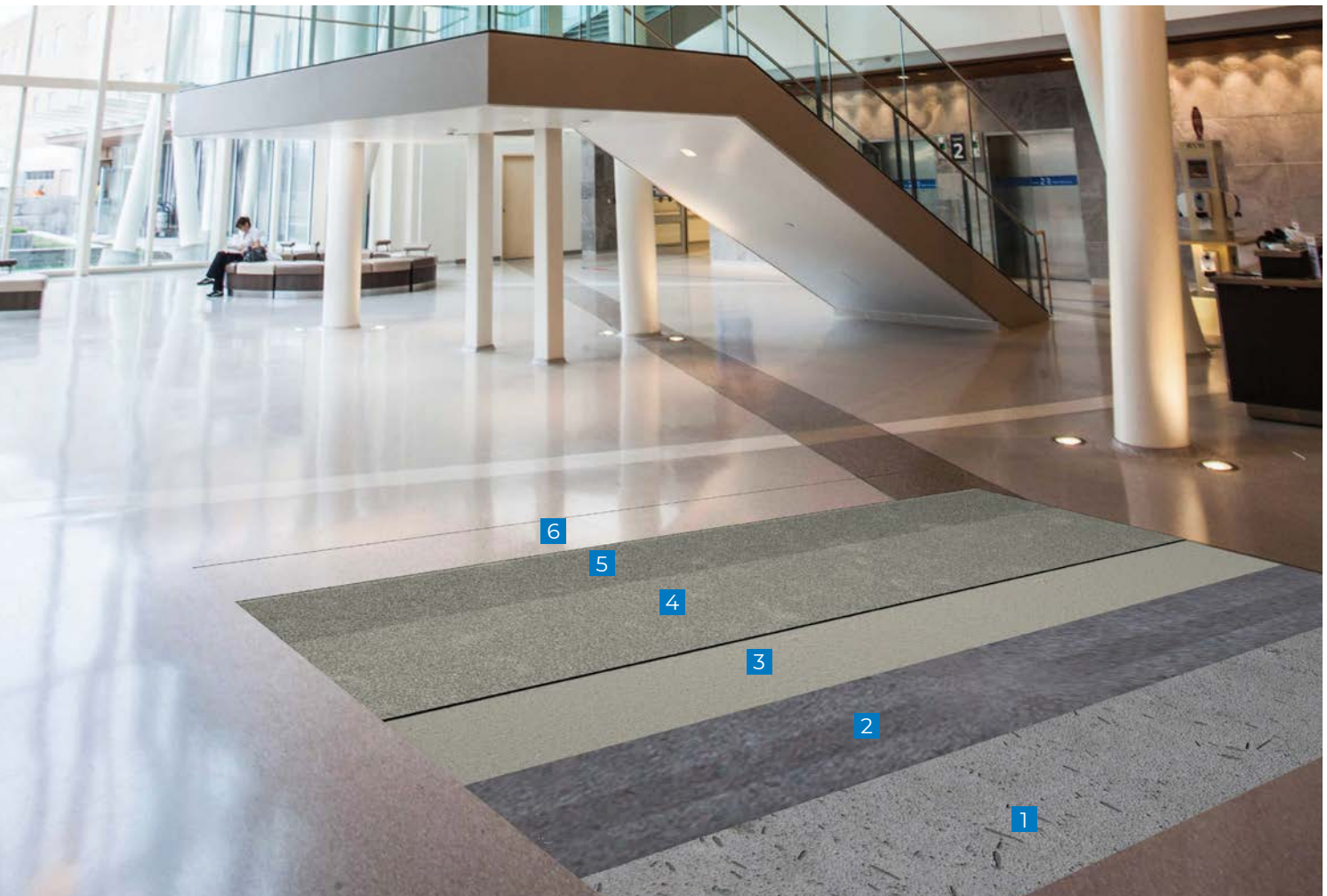
DECORATIVE CONCRETE

Common areas such as lobbies, lounge areas and breakfast areas often feature concrete floors as a design element. While polishing existing concrete can be an option, existing concrete may not always be up to the task. MAPEI products such as *Ultratop* and *Ultratop SP* provide a fast, effective solution for a polished concrete look over less-than-perfect substrates.

Issue: Soft, damaged or uneven concrete

Solutions: Single-source complete system that encapsulates the existing concrete

- 1 Prepared concrete subfloor
- 2 *Primer SN* or *Primer SN Fast*
- 3 Sand broadcast
- 4 *Ultratop SP* or *Ultratop*
- 5 *Mapecrete Hard LI*
- 6 *Mapecfloor Finish 630* or *Mapecrete Protector FF**



*To obtain this look, a stain was also applied.

INTERIOR

LARGE THIN PORCELAIN TILE PANEL

WALL/FLOOR
TILE OVER TILE

Thin porcelain tile panels (also called “gauged” tile) are a trendy retrofit for well-bonded existing but outdated tile installations. Thin porcelain tile panels add a minimal amount of thickness but provide the narrow grout joints and impressive scale that designers demand. Thin porcelain tiles require the maximum amount of coverage and support from mortars, which is why *MAPEI Ultralite S2* was developed. This mortar solves many of the challenges of thin-tile installation.

Issues: Dated tile or stone, cost of removal

Solutions: Fast-setting rendering mortar to flatten walls; bond-promoting primer for existing tile; mortar designed to give maximum support to large gauged panel tile

WALL

- 1 Existing wall (out of plumb)
- 2 *Planitop 330 Fast*
- 3 *MAPEI Ultralite S2*
- 4 Large gauged panel tile
- 5 *MAPEI Flexcolor CQ*
(or *Ultracolor Plus FA*)
- 6 *Mapesil T Plus*

FLOOR

- 1 Concrete
- 2 Existing tile
- 3 *ECO Prim Grip*
- 4 *MAPEI Ultralite S2*
- 5 Large gauged panel tile
- 6 *MAPEI Flexcolor CQ*
(or *Ultracolor Plus FA*)
- 7 *Mapesil T Plus*
- 8 *UltraCare Penetrating Plus*
Stone, Tile & Grout Sealer



INTERIOR

ELEVATOR CAB FLOOR

TILE OR STONE
OVER STEEL

Elevator cabs can be a challenging application, especially for hard surfaces like tile and stone. Minimizing or isolating deflection from the floor system to keep tiles and grout from cracking is a major concern. Pivoting loads and high traffic are also in play in elevator cabs. MAPEI's crack-isolation membranes can provide a long-lasting but cost-effective solution for tiled elevator cabs.

Issues: Flexibility; pivot area; high traffic

Solutions: Materials suitable for substrates that experience deflection

- 1 *Planicrete W*
- 2 Exterior-grade plywood
- 3 *MAPEI SM Primer*
- 4 *Mapeguard 2*
- 5 *Ultraflex LFT*
- 6 Tile
- 7 *MAPEI Flexcolor CQ*
- 8 *Mapesil T Plus*
- 9 *UltraCare Penetrating Plus Stone, Tile & Grout Sealer*



INTERIOR

SERVICE ELEVATOR CAB FLOOR

RUBBER
OVER STEEL

Rubber flooring is also a common challenge for elevator cabs. Adhering rubber to a steel substrate can be tricky, but MAPEI makes it easy with innovative two-part adhesives like *Ultrabond G21*. Rubber flooring also compresses under heavy loads, meaning that the adhesive must bond well but allow some flexing of the surface.

Issues: Adhering to steel; high traffic

Solution: High-bond-strength epoxy adhesive

- 1 Steel
- 2 *Ultrabond G21*
- 3 Virgin rubber sheet (or rubber tile)



INTERIOR

ELEVATOR CAB FLOOR

LUXURY VINYL
PLANK/TILE OVER
STEEL USING
PLYWOOD

Adhering plywood to a metal floor is a typical construction practice that allows for a variety of finish surfaces on top. MAPEI adhesives keep the plywood in place, and our patching and skimcoating compounds prepare it for the finished surface. *Ultrabond ECO 373* can be applied using a trowel or roller, depending on the level of tack that is required for the specified flooring.

Issues: Skimcoating plywood; replacing worn tiles or planks

Solutions: High-performance patch and adhesive

- 1 Steel
- 2 *Planicrete W*
- 3 *Exterior-grade plywood*
- 4 *Planiprep SC* (or *Planipatch*)
- 5 *Ultrabond ECO 373*
- 6 LVP (or LVT)



INTERIOR

ADA BATHROOM AND SHOWER ROOM

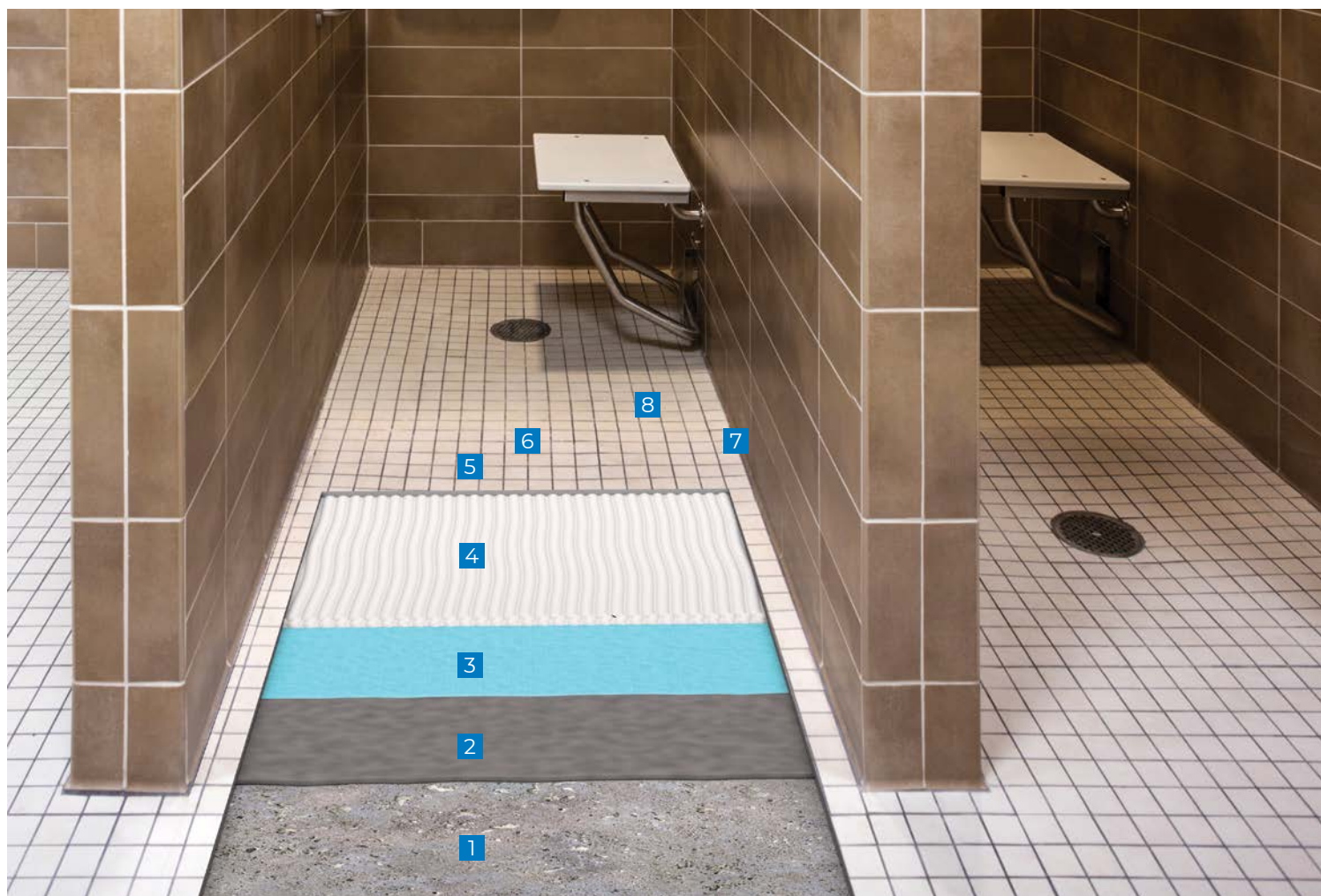
TILE

Curbless showers require sloping the entire floor to the drain, typically by sloping them to the shower itself. Shower areas need proper sloping and waterproofing before tile is installed. MAPEI manufactures a full range of products that work from the substrate to the final surface to produce waterproof, beautiful installations that meet the construction guidelines of the Americans with Disabilities Act.

Issues: Creating a pre-slope; waterproofing

Solutions: Using a mortar bed to slope, and a waterproofing membrane to eliminate water migration

- 1 Concrete
- 2 *Modified Mortar Bed*
over slurry coat
- 3 *Mapelastic AquaDefense*
- 4 *Keraflex Super*
- 5 Tile
- 6 *Ultracolor Plus FA*
- 7 *Mapesil T Plus*
- 8 *UltraCare Penetrating Plus*
Stone, Tile & Grout Sealer



INTERIOR

ADA BATHROOM (OUTSIDE OF SHOWER)

SHEET VINYL

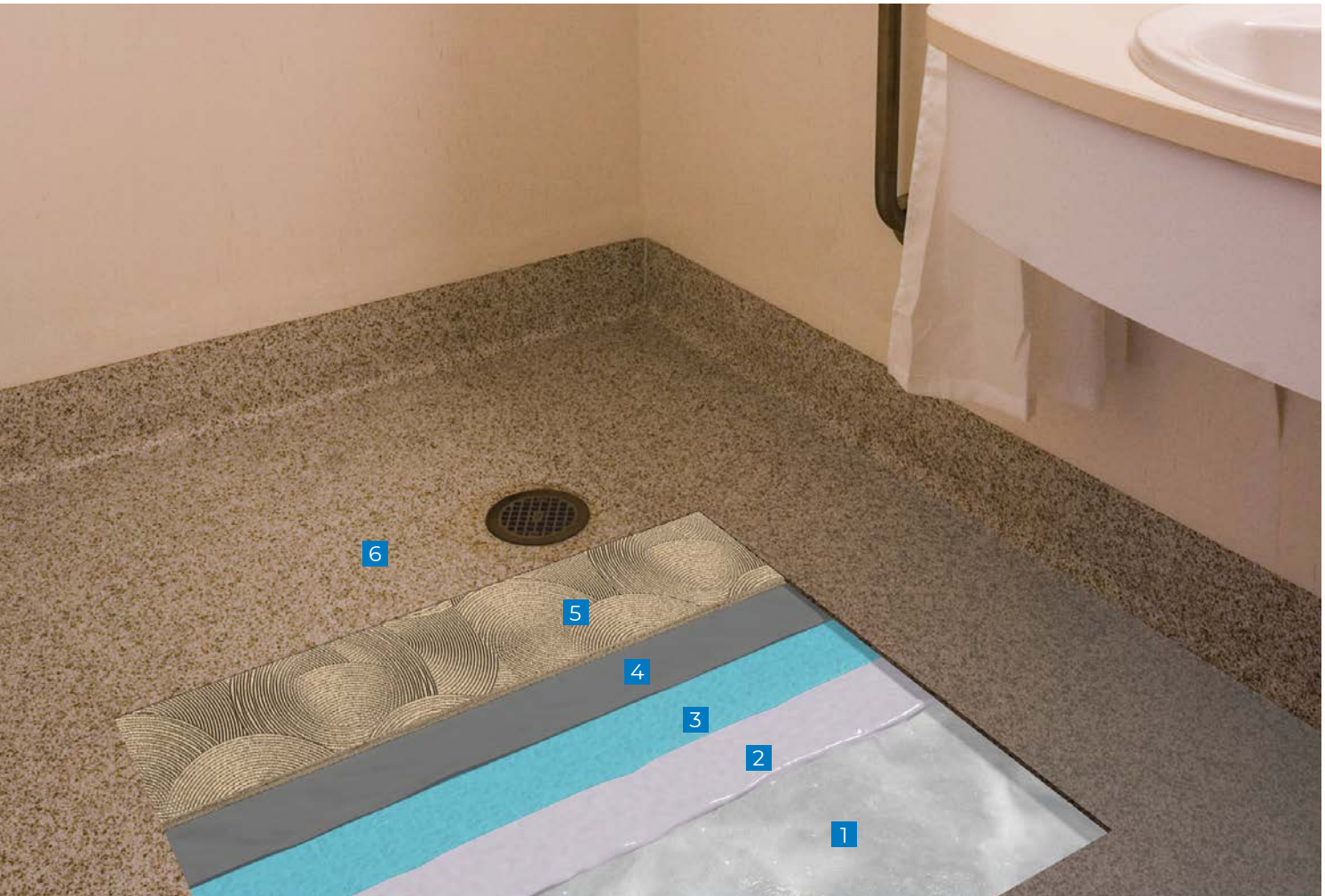
Barrier-free showers require sloping the entire floor to the drain. When high-traction sheet vinyl is the flooring of choice, MAPEI can help with developing the pitch and keeping the vinyl in place even in the presence of heavy loads.

Issues: Preparing a slope for an environment with topical water; adhering vinyl tile on a sloped surface

Solutions: Patching and skimcoating compounds as well as high-quality adhesives

- 1 Concrete
- 2 *Mapecem Quickpatch*
- 3 *Mapelastic AquaDefense*
- 4 *Planiprep SC* (or *Planipatch*)
- 5 *Ultrabond G21*
- 6 Solid sheet vinyl

For installations over concrete with moisture issues, refer to the section on high moisture on Page 33.



INTERIOR

PHYSICAL THERAPY ROOM

RUBBER FLOORING

Rubber flooring promotes safety for patients with mobility challenges. The presence of heavy equipment such as treadmills, handrails and tables can tax ordinary adhesives. MAPEI offers a full range of solutions for rooms where everything needs to move except the adhesive.

Issues: Heavy equipment; point loads; flexible flooring

Solutions: High-compressive-strength leveler and an adhesive that allows rubber to flex with an aggressive bond

- 1 Concrete
- 2 *Primer T*
- 3 *Ultraplan M20 Plus*
- 4 *Ultrabond G21*
- 5 Granulated recycled rubber sheet (or tiles)
- 6 *Ultrabond ECO 575*
- 7 Vinyl (or rubber) cove base



INTERIOR

PATIENT/VISITOR WAITING AREA

CARPET TILES

Carpet tiles are common in waiting areas because they are durable and easy to replace. Table and chair legs can test the substrate with point loads, and the surface of the carpet is subjected to spills and wear. MAPEI products offer time- and stress-reducing options, with releasable adhesives that allow for quick replacement of stained tiles.

Issues: Quick installation and repairs

Solutions: Rapid-setting materials and fast-track installation methods

- 1 Concrete
- 2 *Planiprep SC* (or *Planipatch*)
- 3 *Ultrabond ECO 811*
- 4 Carpet tile
- 5 *Ultrabond ECO 575*
- 6 Vinyl (or rubber) cove base



INTERIOR

OFFICE AREA

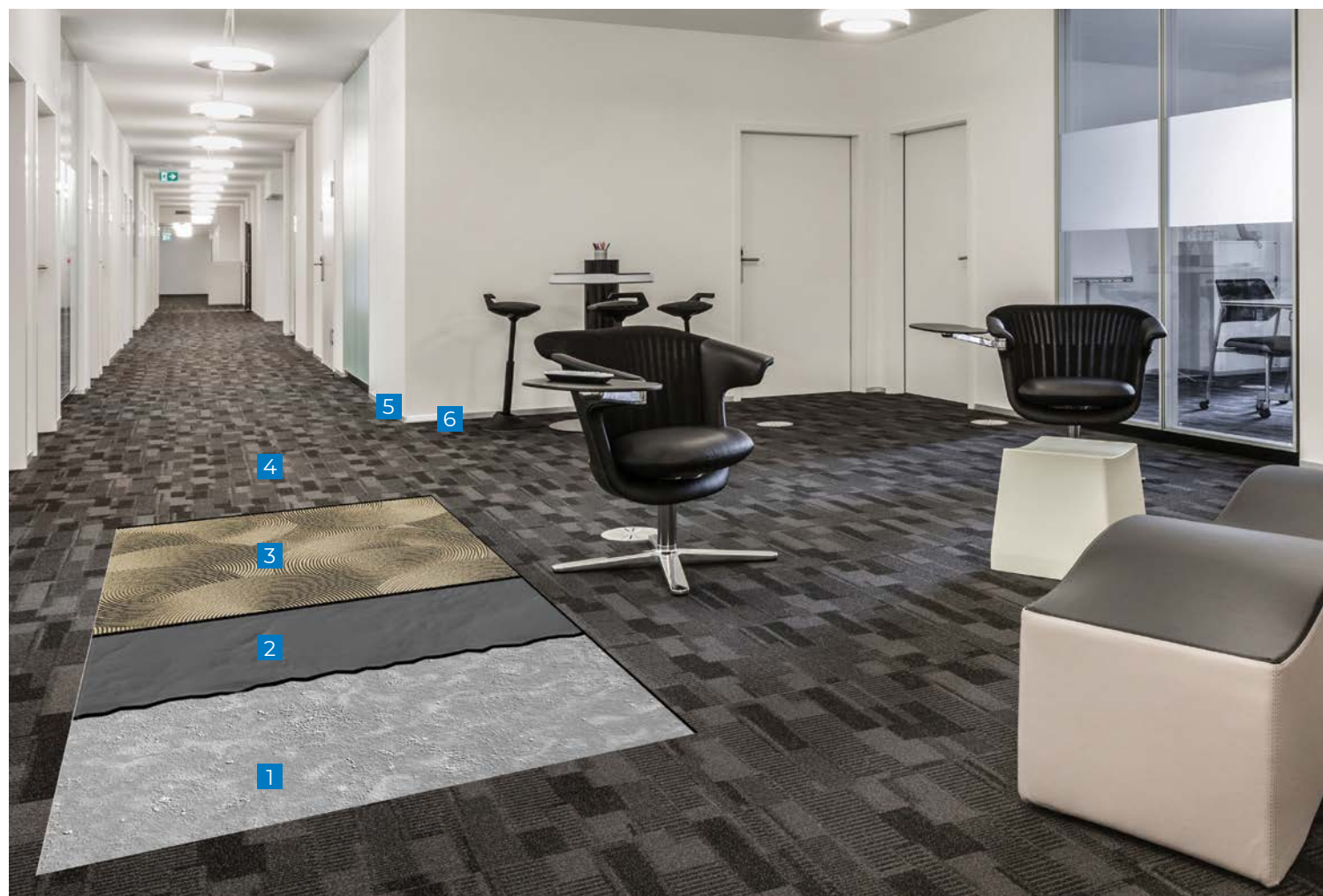
DIRECT-BOND
CARPET

Broadloom carpeting used in commercial office environments will be subjected to higher traffic conditions than in other locations. Because of this, adhesives that are used to bond broadloom carpet need to be resilient to handle traffic; plus, they need to stand up to rigorous cleaning schedules without degradation.

Issue: Durability and bond integrity for broadloom carpet in heavy-traffic areas

Solutions: High-quality adhesive

- 1 Concrete
- 2 *Planiprep SC* (or *Planipatch*)
- 3 *Ultrabond ECO 220*
- 4 Carpet
- 5 *Ultrabond ECO 575*
- 6 Vinyl (or rubber) cove base



INTERIOR

MAINTENANCE/ ELECTRICAL ROOM

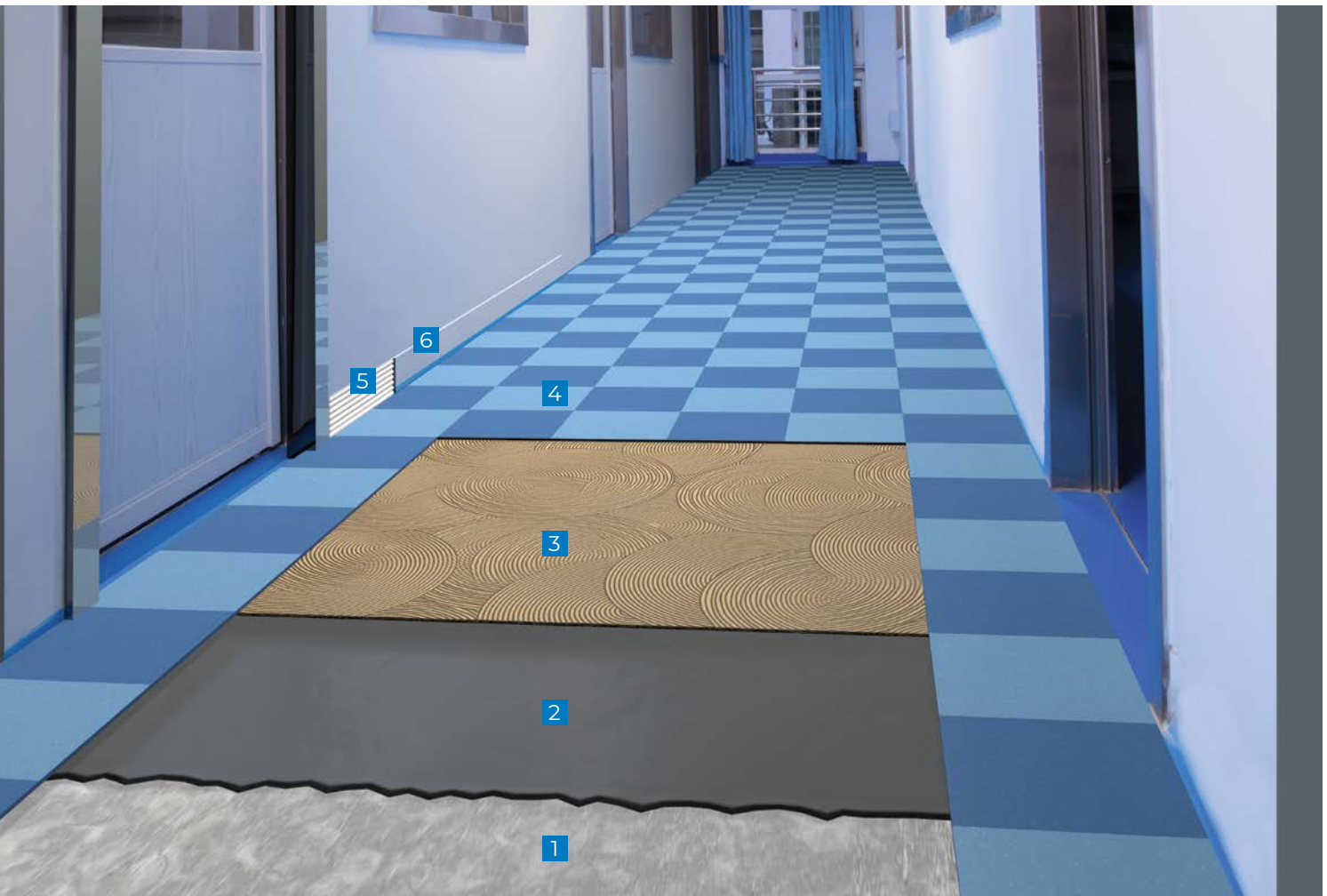
VINYL COMPOSITION
TILE

Maintenance and access areas are often finished with VCT as a cost-effective solution to a durable, cleanable floor. VCT benefits from installation products that are as easy to replace as the tiles. MAPEI's *Ultrabond ECO 711* answers this need, holding tight when you want it to but releasing when you need it to.

Issues: Heavy rolling loads; damage from heavy equipment; traditional "wax-and-strip" methods of maintenances

Solutions: Durable adhesives that allow single-tile replacement

- 1 Concrete
- 2 *Planiprep PSC*
- 3 *Ultrabond ECO 711*
- 4 VCT
- 5 *Ultrabond ECO 575*
- 6 Vinyl (or rubber) cove base



INTERIOR

HIGH MOISTURE AREA

EPOXY MOISTURE BARRIERS

- 1 Concrete (with a CSP of #2 to #3)
- 2 *Primer WE*
- 3 *Ultraplan Extreme 2*
- 4 *Planiseal VS* (or *Planiseal VS Fast*)
- 5 *Ultrabond G21*
- 6 Moisture-sensitive flooring

Special considerations must be given to concrete that has high to extreme moisture issues and also has high spots and/or low spots that exceed 1/4" in 10 feet (6 mm in 3,05 m). In many climates, moisture coming up from the substrate must be factored into the installation. A typical method for addressing moisture under moisture-sensitive floor coverings is with an epoxy moisture barrier. MAPEI has a successful track record in controlling moisture with its *Planiseal VS* and *Planiseal VS Fast* products, combined with moisture-resistant levelers.

Issue: Controlling moisture coming up through the slab

Solution: A moisture-reduction barrier that protects moisture-sensitive flooring



INTERIOR

FAST-TRACK INSTALLATIONS ON GREEN CONCRETE WITH HIGH MOISTURE ISSUES

EPOXY MOISTURE BARRIERS

Fast-track installations have pushed the leveling of slabs earlier and earlier in the life cycle of the concrete. For installations in as little as 7 days over slabs where the moisture is still high, MAPEI's epoxy moisture-reduction barriers are the best choice. As an added benefit, the moisture-reduction barrier also keeps the concrete from drying out too quickly.

Issues: Fast-track installations over green concrete

Solutions: A moisture-reduction barrier for quicker installation of subsequent layers

- 1 Concrete (with a CSP of #2 to #3)
- 2 *Planiseal VS* (or *Planiseal VS Fast*)
- 3 *Primer E* with sand broadcast
- 4 *Ultraplan Extreme 2*
- 5 Appropriate adhesive based on the flooring type
- 6 Moisture-sensitive flooring



MAPEI's *Mapecontact MRT* can bond nearly any kind of finished surface and also acts as a moisture-reduction layer in the system.

Issue: Concrete with high moisture content combined with moisture-sensitive flooring

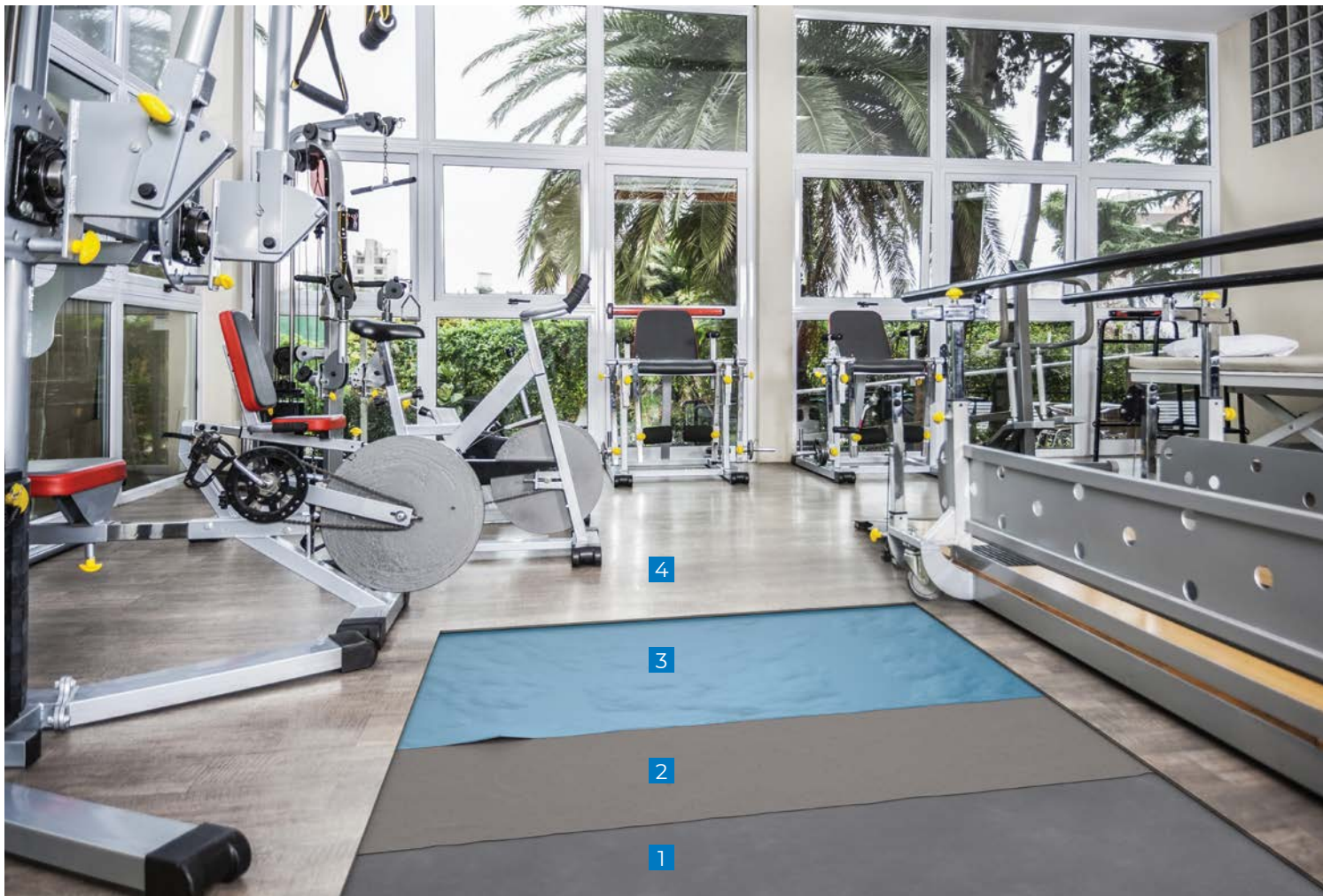
Solutions: Products designed for high-moisture areas to protect the flooring installation

- 1 Concrete
- 2 *Planiprep PSC*
- 3 *Mapecontact MRT*
- 4 Resilient flooring

INTERIOR

CONCRETE WITH
MODERATE TO
HIGH MOISTURE
ISSUES

RESILIENT FLOORING



INTERIOR

HOSPITAL ADA PRIVATE SHOWER AND BATHROOM

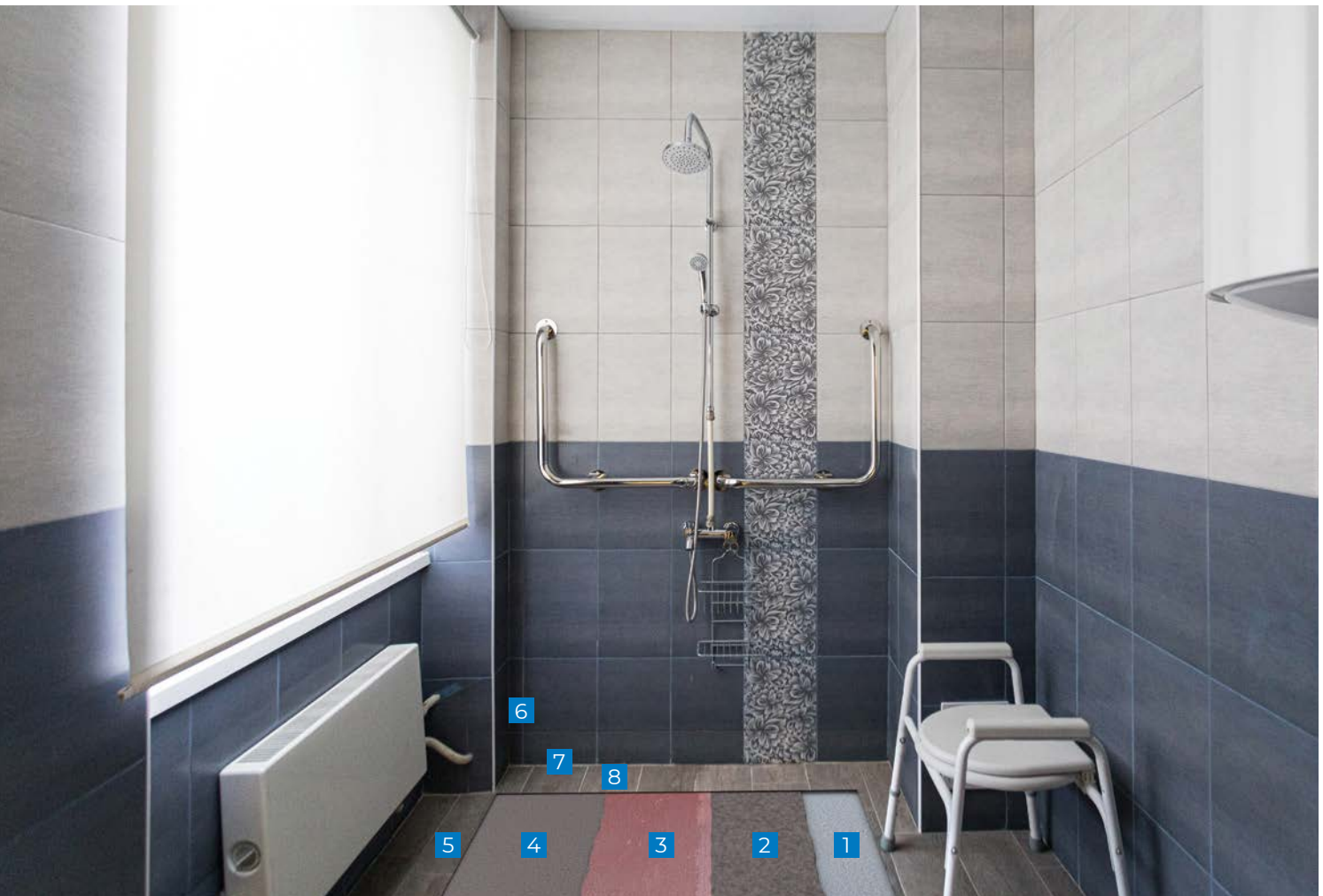
NON-SLIP CERAMIC
OR STONE TILE

Achieving the desired slope is critical to address the need of patients in wheelchairs, walkers or those requiring assistance within the privacy of their hospital rooms. Of equal importance is a flooring system than can withstand the rigors of traffic and support necessary water evacuation.

Issue: Sloping the shower and bathroom floor to provide necessary drainage to ensure patient safety and the needed high-integrity performance in wet areas

Solutions: Use of a fast-setting mortar to pitch to the drains, with a high-quality waterproofing membrane to protect from water intrusion

- 1 Concrete
- 2 *Planislope RS*
- 3 *Mapelastic Turbo*
- 4 *Keraflex Super*
- 5 Large-format tile or stone
- 6 *Ultracolor Plus FA*
- 7 *Mapesil T Plus*
- 8 *UltraCare Penetrating Plus Stone, Tile & Grout Sealer*



INTERIOR

COMMON-AREA BATHROOM WALLS

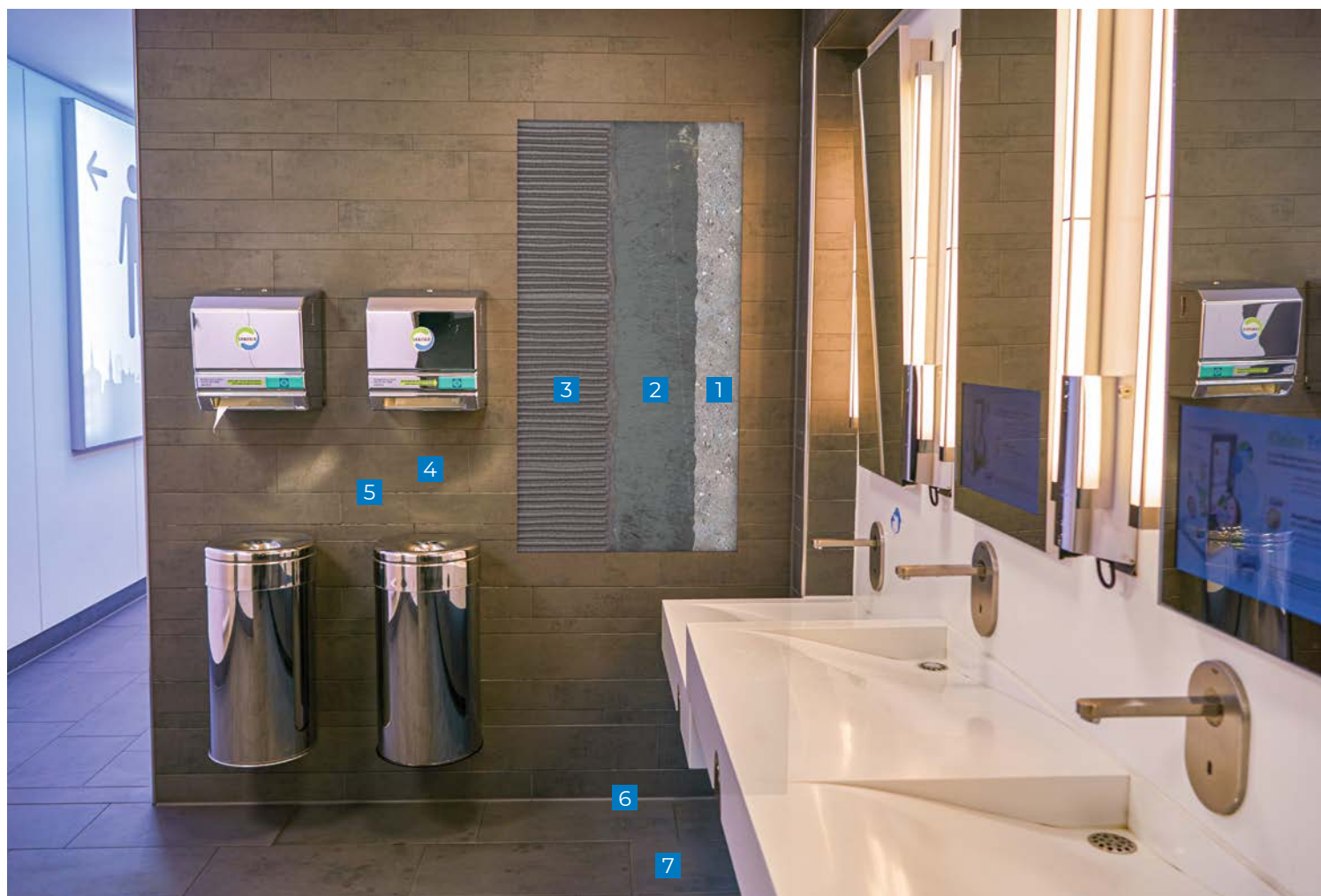
CERAMIC OR STONE
TILE

Large-format tiles are not only fashionable in a healthcare setting, they are also functional. The large surface area is easy to clean, which is a major consideration. However, these tiles must be installed on walls that are perfectly level. Quickly create the ideal substrate for large-format tiles by utilizing this system.

Issue: Out-of-plumb or square concrete walls requiring rendering or screeding to level or patch before installation of large-format tile or stone

Solution: A wall-rendering mortar that provides the needed levelness required for lippage-free, large-format tile installation

- 1 Concrete
- 2 *Planitop 330 Fast*
- 3 *MAPEI Ultralite Mortar*
- 4 Large-format tile
- 5 *MAPEI Flexcolor CQ*
- 6 *Mapesil T Plus*
- 7 *UltraCare Penetrating Plus*
Stone, Tile & Grout Sealer



INTERIOR

CAFETERIA

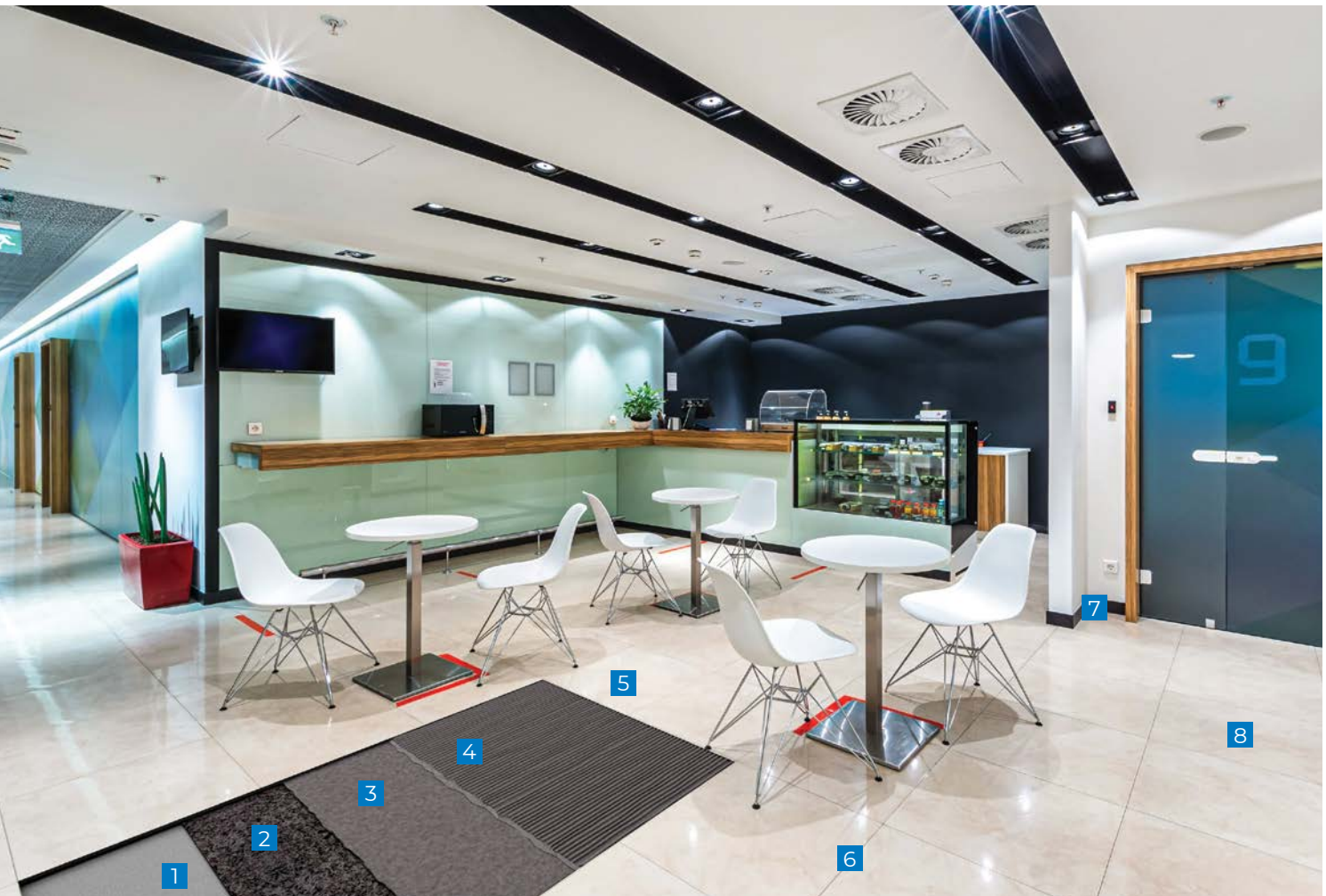
CERAMIC OR STONE
TILE

The healthcare facility's cafeteria sees both foot traffic and food spills. This means that the flooring must be able to withstand high-volume traffic as well as possibly staining foods, including tomato sauces and mustard. Plus, flooring must meet the exacting cleanliness standards of the healthcare facility. This system solution includes all of those factors, and incorporates two of MAPEI's most popular products, *Keraflex Super* mortar and *MAPEI Flexcolor CQ* grout.

Issues: High-traffic and high-visibility areas requiring cleanliness and sanitary maintenance to achieve comfort and solitude for patients, visitors and medical professionals alike

Solutions: A high-quality installation mortar with an easily maintained grout

- 1 Concrete
- 2 Cleavage membrane
- 3 *Modified Mortar Bed*
- 4 *Keraflex Super*
- 5 Large-format tile or stone
- 6 *MAPEI Flexcolor CQ*
- 7 *Mapesil T Plus*
- 8 *UltraCare Penetrating Plus* Stone, Tile & Grout Sealer



A hub of activity and traffic at the hospital is sure to be the combination gift shop / snack bar that sells assorted convenience items with coolers and product displays.

Issues: High-traffic environment for both pedestrian and delivery traffic, with constantly changing kiosk and display locations subjected to rolling loads from restocking fast-moving inventories

Solution: A setting system to handle high traffic and rolling delivery loads with protection from cracks and potential water damage

- 1 Concrete
- 2 *Planislope RS*
- 3 *Mapelastic Turbo*
- 4 *Keraflex Super*
- 5 Large-format tile
- 6 *Ultracolor Plus FA*
- 7 *Mapesil T Plus*
- 8 *UltraCare Penetrating Plus*
Stone, Tile & Grout Sealer

INTERIOR

GIFT SHOP /
SNACK BAR

CERAMIC OR STONE
TILE



Sustainability and healthcare go hand-in-hand

MAPEI's philosophy is in line with this philosophy in balancing performance and sustainability, formulating products that are solvent-free and very low in volatile organic compounds (VOCs). Our products take into account the health and well-being of not only the installer but also the guests visiting your facility. To quickly identify MAPEI products that can contribute to sustainable programs, look for the Green Innovation logo next to the product.

Contact our Technical Services' Sustainability Manager at 1-800-992-6273 for specific sustainable product certifications and documentation..



Environmental Product Declarations

An Environmental Product Declaration (EPD) uses verifiable methods (the ISO 14025 standard) to communicate the energy, water, transportation and other environmental impacts associated with manufacturing a product based on a Life Cycle Assessment (LCA) and prepared according to established rules/requirements.

MAPEI participates in “industry-average” in addition to product-specific EPDs.

Health Product Declarations

A Health Product Declaration (HPD) is an ingredient inventory that lists all of the ingredients (“formula transparency”) of a finished product and the associated health hazards with both intentional and residual ingredients.



Manufacturers' Inventory

Manufacturers' Inventory (MI) is a publicly available inventory of all ingredients that are identified by name and Chemical Abstract Service Registration Number (CASRN) and are categorized as GreenScreen Benchmark and GreenCircle Certified.



SCS Global Services' Indoor Advantage Gold

To be certified to the Indoor Advantage Gold™ standard, products must be independently tested by SCS-approved labs following specific protocols for measuring Volatile Organic Compounds (VOC) emissions. Indoor Advantage Gold™ ensures full compliance with the California Department of Public Health's (CDPH) “Standard Method for the Testing and Evaluation of Volatile Organic Chemical Emissions from Indoor Sources.” Certification qualifies products to earn credit under U.S. Green Building Council's LEED version 4, Living Building Challenge's Health and Happiness Imperative, and other widely adopted green building rating systems.



Green Squared

MAPEI products with this logo are certified by TCNA's Green Squared program (ANSI A138.1), North America's first sustainable product program developed exclusively for tiles and tile installation materials and accepted in LEED v4 credit program. SCS Global Services (SCS) is the third-party certifier for these products.



Red List Free

When a product is in its developmental stage, all factors influencing its impact on the environment and human health are evaluated from a sustainable perspective. This evaluation includes reducing and replacing “chemicals of concern” (e.g., formaldehyde, phthalates and isocyanates) with chemicals that have a lower risk, which then grants products with Living Building Challenge's “Red List free” status.

ECO Prim Grip™

Multipurpose, Bond-Promoting Primer

ECO Prim Grip is a ready-to-use, low-VOC, synthetic resin-based primer with bond-promoting silica aggregates suspended in a dispersion. It enhances the performance and adhesion of mortars to existing ceramics and difficult-to-bond-to substrates. Plus, it improves bonding of self-leveling underlayments (SLUs) and bonds of render coats over cementitious substrates. Suitable for a wide variety of substrates, *ECO Prim Grip* combines excellent versatility with an easy, low-odor application.

Elastocolor® Coat

Water-Based, High-Build, 100%-Acrylic, Waterproof Coating

Elastocolor Coat is a water-based, high-build, 100%-acrylic coating designed to protect and decorate above-grade, exterior/interior vertical concrete, masonry, stucco, fiber-reinforced polymer (FRP) composites and EIFS systems. *Elastocolor Coat* is available in two textures (smooth and fine), in a wide range of standard colors and in an unlimited number of custom colors to increase its design versatility.

Elastocolor® Primer WB

Water-Based, 100%-Acrylic Primer for Elastocolor Coatings

Elastocolor Primer WB is a clear, water-based, 100%-acrylic primer for use with *Elastocolor* coatings. *Elastocolor Primer WB* improves adhesion on porous, dusting and new substrates.

Granirapid® System

Premium, Rapid-Setting, Flexible Tile Mortar

Granirapid is the industry's first and most flexible, high-performance, fast-curing mortar system geared for fast-track projects. It develops high, early mechanical strength and can be specified for the most demanding tile applications. Thanks to MAPEI's High-Hydrated Cement Technology (HCT™), *Granirapid* offers superior drying-out characteristics for quick curing and does not contribute to efflorescence. When installed in conjunction with *Ultracolor® Plus FA* grout, *Granirapid* will allow water submersion in only 72 hours.

Kerabond/Keralastic™ System

Premium, Flexible Tile Mortar

Kerabond/Keralastic System is a high-performance, two-part system: *Keralastic®*, a second-generation "flexible" acrylic latex additive, is used to enhance the performance of *Kerabond®*, which is a premium-grade dry-set mortar. This system has exceptional bond strength, flexural strength, elongation and freeze/thaw durability. To ensure proper flexibility, always use a latex additive when applying a dry-set mortar over plywood or to set nonvitreous tiles.

Keraflex™ Super

Premium, Extra Smooth, Large-and-Heavy-Tile Mortar with Polymer

Keraflex Super is a highly versatile, non-sag/nonslump, large-and-heavy-tile mortar and thin-set mortar for tile and stone for installations on floors, walls and countertops. This polymer-modified mortar has a high content of a unique dry polymer, resulting in excellent adhesion to the substrate and tile, with enhanced resistance to freeze/thaw environments. It is formulated with Easy Glide Technology™ for ease of application and with a consistency that allows adjustability when used with lippage control systems. *Keraflex Super* can also be used as a mortar over uncoupling, crack-isolation, sound-reduction and waterproofing membranes.

Kerapoxy® IEG CQ

100%-Solids, Industrial-Grade, Epoxy Grout with Color-Coated Quartz

Kerapoxy IEG CQ is a water-cleanable, 100%-solids, epoxy grout with high chemical and stain resistance. It is a nonshrinking, non-sagging, fast-curing, efflorescence-free grout. Color-coated quartz dramatically improves its cleanability, so that *Kerapoxy IEG CQ* leaves very little film residue during cleanup of excess grout with a grout float. The color-coated quartz also eliminates pigment bleed, so tiles are not stained during installation.

This grout is perfectly suited for use in commercial kitchens, meat packing houses, and any commercial and institutional floors that require daily cleaning with enzymatic cleaners. *Kerapoxy IEG CQ* is ideal for applications where high-strength, mold- and mildew-resistant grout joints are required. In addition, it has high temperature resistance and can be steam-cleaned.

Mapebond™ 700

Solvent-Based Contact Adhesive

Mapebond 700 is a quick-drying, solvent-based, high-tack contact adhesive. It is specifically formulated to promote maximum adhesion of MAPEI waterproofing membranes to various substrates.

Mapebond™ 710

Low-VOC, Solvent-Based Contact Adhesive

Mapebond 710 is a low-VOC, quick-drying, solvent-based, high-tack contact adhesive. It is specifically formulated to promote maximum adhesion of MAPEI waterproofing membranes to various substrates.

Mapebond™ 720

Water-Based Contact Adhesive

Mapebond 720 is a quick-drying, water-based, high-tack contact adhesive. It is specifically formulated to promote maximum adhesion of MAPEI waterproofing membranes to various substrates.

Mapecem® Quickpatch

High-Performance Concrete Patch

Mapecem Quickpatch is a high-performance, fast-setting, cementitious material used for the patching of concrete surfaces.

Mapecontact™ MRT

Moisture-Resistant Tape for Resilient Flooring Installation

Mapecontact MRT is a double-sided, moisture-resistant tape for the rapid and permanent installation of a wide variety of resilient flooring types. It has been specifically designed to provide instant bond and instant utilization for residential and commercial floor installations. *Mapecontact MRT* is unaffected by high moisture conditions in concrete and can be installed without moisture testing.

Mapecrete™ Hard LI

Lithium Silicate Densifier and Sealer for Concrete

Mapecrete Hard LI is a water-based, VOC-free, lithium silicate solution used to densify, seal and dustproof horizontal, hard-troweled concrete surfaces. It penetrates the concrete surface, chemically reacts with the free lime and produces a dense, hard matrix within the concrete and a more durable surface on top.

Mapecrete™ Protector FF

High-Gloss, Film-Forming Protective Coating for Concrete

Mapecrete Protector FF is a film-forming, high-gloss protective coating designed to increase the stain resistance of interior, polished or hard-troweled concrete floors.

Mapedrain™ 25

High-Strength, High-Flow, Prefabricated Drainage Composite with Protective Film

Mapedrain 25 is a high-strength, three-dimensional drainage composite. It consists of a nonwoven filter fabric bonded to individual dimples of the molded polypropylene core, minimizing fabric intrusion into the drainage channels caused by overburden pressure. The filter fabric allows water to pass freely into the drainage core, which provides hydrostatic relief while preventing the passage of soil or sand particles which might clog the core. *Mapedrain 25* also has a polymeric protective film on the back side to provide additional protection to waterproofing membranes.

Mapedrain™ TD Drainage Composite

High-Strength, High-Flow Drainage Composite for Foundations

Mapedrain TD Drainage Composite is a high-strength, three-dimensional modular drainage and collection composite for foundations. It consists of a nonwoven filter fabric that is bonded to and wrapped around a molded polypropylene core, minimizing fabric intrusion into

the drainage channels that are caused by overburden pressure. The filter fabric allows water to pass freely into the drainage core, which provides hydrostatic relief while preventing the passage of soil or sand particles that might clog the core. *Mapedrain TD Drainage Composite* is designed to replace a conventional gravel-covered pipe drain.

Mapedrain™ TD Fittings

Fittings for Installing Mapedrain TD Drainage Composite

Mapedrain TD Fittings consist of end outlet, side outlet, splice and corner fittings that are made out of polyethylene and assist in installing *Mapedrain TD Drainage Composite*. The end outlet fitting connects the end of *Mapedrain TD Drainage Composite* to a 4" (10 cm) corrugated pipe. The side outlet fitting connects the side of *Mapedrain TD Drainage Composite* to a 4" (10 cm) corrugated pipe. The splice fitting connects two pieces of *Mapedrain TD Drainage Composite* end to end. And the corner fitting connects two pieces of *Mapedrain TD Drainage Composite* together at the inside or outside corners of a building.

Mapeflex® P1 FT

One-Component, Non-Sag, Elastomeric Polyurethane Sealant

Mapeflex P1 FT is a high-performance, one-component, fast-track, elastomeric, moisture-cured, polyurethane sealant and adhesive. *Mapeflex P1 FT* offers excellent adhesion to most surfaces, superior gunning and tooling, and excellent flexibility for moving joints.

Mapeflex® P2 NS

Two-Component, Non-Sag, Polyurethane Sealant

Mapeflex P2 NS is a two-component, non-sag, polyurethane sealant that meets the requirements of ASTM C920.

Mapefloor™ Finish 415 NA

Two-Component, Polyurethane Topcoat for Mapefloor Parking Deck System

Mapefloor Finish 415 NA is a two-component, solvent-free, aromatic polyurethane topcoat specifically designed to provide a protective wear coat for elevated concrete surfaces where the *Mapefloor* parking deck system is utilized.

Mapefloor™ Finish 630

Two-Component, Clear Protective Acrylic Coating for Floors

Mapefloor Finish 630 is a two-component, protective, acrylic filming agent in a water dispersion for floors made from concrete and *Ultratop®* systems. *Mapefloor Finish 630* provides a high-performance finish on *Ultratop* systems.

Mapecolor™ PU 400 FC

Two-Component, Fast-Curing, Polyurethane Basecoat for Mapecolor Parking Deck System

Mapecolor PU 400 FC is a two-component, fast-curing, polyurethane basecoat specifically designed for use as a waterproofing membrane for elevated concrete surfaces where the *Mapecolor* parking deck system is utilized. With its high elongation and crack-bridging properties, *Mapecolor PU 400 FC* is suited as a basecoat layer on concrete substrates subject to vibration.

Mapeguard® 2

3-in-1 Membrane for Crack Isolation, Waterproofing and Sound Reduction

Mapeguard 2 is a next-generation, flexible, thin, 40-mil (1-mm) lightweight, load-bearing, fabric-reinforced “peel-and-stick” crack-isolation, waterproofing and vapor-control membrane. *Mapeguard 2* helps to prevent existing or future in-plane floor cracks (with movement up to 3/8" [10 mm] wide) from transmitting through grout, ceramic tile and natural stone. It also reduces the transmission of impact sound (footsteps, dropped objects, etc.) and airborne sound (voice, TV, etc.) through floors when installed under ceramic tile, stone or wood floor coverings.

MAPEI Flexcolor® CQ

Ready-to-Use Grout with Color-Coated Quartz

MAPEI Flexcolor CQ is a professional-grade, ready-to-use specialty grout for precision commercial and residential installations with porcelain, ceramic and natural-stone tiles. *MAPEI Flexcolor CQ* can be used to grout interior/exterior tile, and its nonporous composition helps to prevent water-based stains by providing water repellency to the grout surface. *MAPEI Flexcolor CQ* is formulated with the latest innovation in quartz aggregate, which ensures color consistency, ease of cleanability and improved workability. In addition, this grout can be used on sensitive tile surfaces once tested, requires no sealer and cures naturally from evaporation of the low level of water in the formulation.

Comparison testing of *MAPEI Flexcolor CQ* versus traditional Portland-cement grout has verified that *MAPEI Flexcolor CQ* is 30% more cost-efficient (based on typical rates of installers) and requires 65% less time to install.

MAPEI SM Primer™

Water-Based Primer for MAPEI Peel-and-Stick Membranes

MAPEI SM Primer is a ready-to-use, fast-drying, water-based, latex primer for use under MAPEI's peel-and-stick sheet membranes on residential and commercial indoor or outdoor floors. *MAPEI SM Primer* greatly increases the bond of MAPEI's peel-and-stick sheet membranes to concrete, plywood and other approved, properly prepared floors. It can be applied with a roller or brush, is white in color and dries clear.

MAPEI Ultralite® S2

Premium, Highly Deformable, Lightweight, Gauged-Tile Mortar with Polymer

MAPEI Ultralite S2 is a premium-grade, lightweight, single-component thin-set mortar that is ideal for installation of gauged (formerly “thin”) porcelain tile. This high-performance, highly deformable, polymer-modified mortar is formulated with Easy Glide Technology™ for ease of application. *MAPEI Ultralite S2* features a long open time and superior transfer properties to enhance back-buttering, and can be used also for ceramic tile and stone. *MAPEI Ultralite S2*'s unique Ultralite Technology™ provides twice the coverage of a standard thin-set mortar per pound/kg and may contribute to LEED points with 20% recycled content.

Mapelastic® AquaDefense

Premium Waterproofing and Crack-Isolation Membrane

Mapelastic AquaDefense is a premixed, advanced liquid-rubber, extremely quick-drying waterproofing and crack-isolation membrane for installation under ceramic tile or stone in residential, commercial and industrial environments. *Mapelastic AquaDefense* provides a thin, continuous barrier to protect adjacent rooms and floors below from water damage. For common problem areas like coves, corners, cracks and drains, it can be combined with MAPEI's optional *Reinforcing Fabric* or *Mapeband™* accessories (cove roll and drain flash) to provide additional protection. *Mapelastic AquaDefense* dries after about 30 to 50 minutes and is then ready to receive any MAPEI polymer or epoxy mortar. *Mapelastic AquaDefense* can be flood-tested after 12 hours of drying time, is IAPMO-listed for use as a shower-pan liner, and exceeds ANSI A118.10 and ANSI A118.12 standards.

Mapelastic® Turbo

Premium, Rapid-Drying, Waterproofing and Crack-Isolation Membrane

Mapelastic Turbo is a two-component, rapid-drying, cementitious-binder-based membrane with fine-grained selected aggregates, special admixtures and synthetic polymers in water dispersion for interior and exterior installations under ceramic tile or stone in residential, commercial and industrial intermittent wet or submerged environments. Applied easily with a roller or brush, *Mapelastic Turbo* provides an excellent barrier to protect adjacent rooms and floors below from water damage. *Mapelastic Turbo* exceeds ANSI A118.10 and ANSI A118.12 standards and is compatible with polymer-modified cement-based mortars (ANSI A118.4 or better) or epoxy mortars (ANSI A118.3).

Mapeshield™ I

Pure Zinc Galvanic Anode

Mapeshield I is a pure zinc anode for cathodic protection of reinforcing steel against corrosion in new, reinforced structures as well as structures requiring repair.

Mapesil® T Plus

100%-Silicone Sealant with Enhanced Adhesion for Heavy Traffic and Expansion/Movement Joints

Mapesil T Plus is a professional-grade, 100%-silicone sealant with enhanced adhesion for use on multiple substrates. This product is specifically formulated for heavy traffic and expansion/movement joints exceeding both ASTM and ANSI standards.

Mapesonic™ 2

All-in-One Membrane for Crack Isolation, Sound Reduction, Waterproofing and Vapor Management

Mapesonic 2 is a patented, next-generation, flexible, 76-mil thin, lightweight, load-bearing, fabric-reinforced, "peel-and-stick" membrane for sound reduction, crack isolation, waterproofing and vapor management. Application of *Mapesonic 2* can be immediately followed by installation of finished flooring. *Mapesonic 2* reduces transmission of impact sound (such as footsteps and dropped objects) and airborne sound (such as voice and TV) through floors when installed under ceramic tile, stone, vinyl and wood floorings. It also helps to prevent existing or future in-plane floor cracks (with movement up to 3/8" or 10 mm wide) from transmitting through grout, ceramic tile and natural-stone assemblies.

Modified Mortar Bed

Polymer-Modified Thick-Bed and Render Mortar

Modified Mortar Bed is a pre-blended, cement-based, polymer-modified thick-bed and render mortar that includes a blend of select aggregates. Rather than requiring the use of a latex additive, it only needs mixing with water to produce a thick-bed mortar of exceptional strength.

Novoplan® HFL

High-Flow, Self-Leveling Compound

Novoplan HFL is a self-leveling, calcium-aluminate-based underlayment and repair mix for interior concrete and engineer-approved floors with high-flow characteristics.

Planicrete® W

Flexible Setting Compound

Planicrete W is tremendously flexible and excellent for installing tile over well-supported and properly prepared steel substrates (such as ship decks, elevators, steel staircases and bank vaults). It is designed for setting most types of tile, including moisture-sensitive tile and natural stone such as Rosso Levanto marble, Negro Marquina marble, and green marble and their agglomerates.

Planipatch®

Fast-Setting, Polymer-Modified, Cement-Based Patching Compound

Planipatch is an ultra fast-drying, self-curing, polymer-modified, cement-based patching compound that rapidly develops high compressive strength. When *Planipatch* is

mixed with *Planipatch Plus®*, the *Planipatch Plus System* can be used as an embossing leveler or as a patch to fill voids over properly prepared vinyl sheet goods, vinyl composition tile (VCT) and cement terrazzo before the direct glue-down installation of floor coverings.

Planiprep® PSC

Moisture-Resistant, Fast-Drying Patch and Skimcoating Compound

Planiprep PSC is a fast-drying, cement-based, fiber-reinforced, polymer-modified patch and skimcoating compound designed for preparing concrete and wood substrates for flooring installation.

Planiprep® SC

High-Performance, Fiber-Reinforced Skimcoating Compound

Planiprep SC is a high-performance, polymer-modified, fiber-reinforced, cement-based skimcoating and patching compound. Use *Planiprep SC* to skimcoat and smooth minor surface variations and defects on common substrates. *Planiprep SC* creates a strong, durable surface ready for almost any floor application. Its unique formulation mixes easily with water and produces an easy-to-apply patching compound. Rapid-setting *Planiprep SC* allows for fast-track flooring installations in 30 to 60 minutes after application, depending on thickness and environmental conditions.

Planiseal® Membrane SA

Self-Adhering Sheet Membrane

Planiseal Membrane SA is a 63-mil, self-adhering sheet membrane consisting of 61 mils of rubberized asphalt laminated to a 2-mil PET film. The combination of these two excellent waterproofing materials provides a durable, high-performance waterproofing membrane. *Planiseal Membrane SA* is suitable for installations where the ambient and substrate temperatures are above 40°F (4°C).

Planiseal® VS

Alkali-Resistant, Epoxy Moisture-Reduction Barrier

Planiseal VS is an alkali-resistant, two-component, 100%-solids epoxy coating that effectively stops moisture-related problems with floor coverings. In addition, *Planiseal VS* expedites floor-covering installations by eliminating the traditional wait time required for new concrete slabs to reach moisture levels suitable for installations.

Planiseal® VS Fast

Fast-Track, Alkali-Resistant, Epoxy Moisture-Reduction Barrier

Planiseal VS Fast is a fast-curing, alkali-resistant, two-component, 100%-solids epoxy coating that effectively stops moisture-related problems over concrete that impact floor coverings. In addition, it significantly expedites floor installations by eliminating the traditional wait time required for new concrete slabs to reach moisture levels suitable for floor-covering installation.

Planislope™ RS

Rapid-Setting, Polymer-Modified Sloping Mortar

Planislope RS is a rapid-setting, pre-blended, cement-based, polymer-modified mortar that includes a blend of select aggregates for use in sloping and thick-bed mortar installations. It only needs mixing with water to produce a mortar of exceptional strength. Used for preparing a substrate before the installation of tile and stone, *Planislope RS* is designed for pre-sloping under waterproofing membranes and mortar beds in showers when quick turnarounds are desired.

Planitop® 12 SR

Sulfate-Resistant, Vertical, Overhead and Horizontal Repair Mortar with Silica Fume

Planitop 12 SR is a sulfate-resistant, one-component, shrinkage-compensated, cementitious repair mortar. *Planitop 12 SR* is fiber-reinforced, contains both silica fume and a corrosion inhibitor, and is intended for the repair of vertical, overhead and horizontal concrete surfaces.

Planitop® 330 Fast

Quick-Setting, Fiber-Reinforced, Cementitious Rendering Mortar

Planitop 330 Fast is a quick-setting, polymer-modified, fiber-reinforced cementitious rendering, patching and leveling mortar for interior and exterior walls, floors and submerged areas. It can be applied from 1/8" to 1-1/4" (3 mm to 3.2 cm) in thickness to ramp, smooth and level surfaces. Eliminating the need for a latex additive, *Planitop 330 Fast* requires only mixing with water to produce a non-sagging mortar that is ready for tile installation in as little as 90 minutes.

Planitop® XS

One-Component, Fast-Setting, Extended-Working-Time, Vertical and Overhead Repair Mortar

Planitop XS is an extended-working-time variation of *Planitop X*. Shrinkage-compensated, fiber-reinforced, polymer-modified and containing a proprietary corrosion inhibitor, *Planitop XS* features *Planitop X*'s outstanding workability and versatility.

Primer E™

High-Performance, 100%-Solids, Epoxy Primer

Primer E is a two-component, 100%-solids, epoxy primer and bonding agent designed for MAPEI self-leveling underlayments when using a sand broadcast method. *Primer E* is the most effective method for bonding to nonporous, dense substrates before installing self-leveling underlayments subject to high stress. *Primer E*'s low viscosity makes installation fast and easy, and provides excellent penetration into the substrate and therefore a tenacious bond.

Primer SN™

Two-Component, Filled, Epoxy Primer

Primer SN is a two-component, filled, epoxy primer specifically designed to enhance adhesion of cement-based decorative and multilayer flooring, such as MAPEI's *Mapecfloor™* products, *Ultratop®* products, *PlaniLevel™* products and *Planitop® EL*.

Primer SN™ Fast

Fast-Setting, Two-Component, Fillerized, Epoxy Primer

Primer SN Fast is a fast-setting, two-component, fillerized, epoxy primer specifically designed to enhance adhesion of multilayer flooring systems, such as MAPEI's *Mapecfloor™* polyurethane and epoxy systems as well as urethane cement screeds.

Primer T™

All-Purpose Primer for Self-Leveling Underlayments

Primer T is a low-VOC, magenta-colored, water-based acrylic primer that enhances the performance and adhesion of self-leveling underlayments (SLUs) on nonporous and porous substrates. Suitable for a wide variety of substrates, *Primer T* combines excellent versatility with easy, low-odor application.

Primer WE™

Water-Based Epoxy Primer

Primer WE is a two-component, polymer-modified, water-based epoxy primer for enhanced adhesion to nonporous substrates before the application of MAPEI self-leveling materials. It improves adhesion over smooth, nonabsorbent and difficult-to-bond-to substrates such as properly prepared ceramic tile, epoxy moisture barriers, cement-based terrazzo, old cutback adhesive residue and approved plywood subfloors.

Ultrabond ECO® 220

Premium Flooring Adhesive

Ultrabond ECO 220 is a high-solids, latex-based adhesive designed specifically for installing carpet and felt-backed vinyl sheet flooring. Its unique formulation is perfectly suited for commercial flooring applications where heavy traffic is expected. *Ultrabond ECO 220* also exhibits an extended working time, making it ideal for the installation of patterned carpets. It may be used in both direct and double glue-down installation methods for carpet.

Ultrabond ECO® 360

Premium, High-Performance Adhesive for Solid Vinyl Sheet, Tile and Plank

Ultrabond ECO 360 is a proprietary, high-performance, wet-lay and pressure-sensitive adhesive designed specifically for installing homogeneous and heterogeneous solid vinyl flooring. With its strong, durable, moisture-resistant and alkali-resistant bond, it is ideal for commercial and institutional applications. *Ultrabond ECO 360* has an excellent open time, develops

strength quickly, performs well under rolling loads and resists indentation. Its low volatile organic content makes it ideal for use in occupied buildings such as hospitals and medical centers.

Ultrabond ECO® 373

Universal, Pressure-Sensitive, Multi-Flooring Adhesive

Ultrabond ECO 373 is a super aggressive, pressure-sensitive adhesive that is designed for the installation of a wide variety of resilient flooring types. *Ultrabond ECO 373* has been specifically formulated to provide extended working time and can be applied using a trowel or roller, depending on the level of tack that is required for the flooring that is being installed.

Ultrabond ECO® 399

Heavy-Duty, Pressure-Sensitive, Multi-Flooring Adhesive

Ultrabond ECO 399 is a high-moisture-resistant, heavy-rolling-load-resistant, aggressive, pressure-sensitive adhesive with enhanced dimensional control properties designed to install a wide variety of resilient flooring types.

Ultrabond ECO® 560

Premium, Universal Rubber-Flooring Adhesive

Ultrabond ECO 560 is a proprietary acrylic polymer-based adhesive with enhanced bonding characteristics specifically for rubber sheet and tile flooring. It can also be used to bond solid vinyl sheet, plank and tile; vinyl composition tile (VCT); and felt-backed vinyl sheet flooring. *Ultrabond ECO 560* flashes quickly to its tacky phase and is suitable for use over porous and nonporous substrates. Its unique performance characteristics, non-hazardous components and low volatile organic content make it suitable for use when two-component urethane products cannot be recommended.

Ultrabond ECO® 575

Premium Wall-Base Adhesive

Ultrabond ECO 575 is a premium wall-base adhesive specifically designed to provide superior bond and impact resistance for rubber, vinyl and carpet wall base. *Ultrabond ECO 575* also has been reformulated to offer even greater grab and wet strength, keeping corners wrapped tight. Its light-colored, water-based, acrylic-polymer formulation won't stain even the whitest wall base.

Ultrabond ECO® 711

Premium, Clear, Thin-Spread VCT Adhesive

Ultrabond ECO 711 is a latex-based adhesive that offers a quick drying time with enhanced grab and slip resistance for vinyl composition tile (VCT) installations. *Ultrabond ECO 711* is translucent when dry, allowing layout lines to be easily seen.

Ultrabond ECO® 811

Universal Carpet Tile Adhesive

Ultrabond ECO 811 is a high-performance, acrylic latex adhesive designed to provide an aggressive tack for installing all types of carpet tile. *Ultrabond ECO 811* provides a secure, releasable adhesive base for standard PVC-backed carpet tile as well as for non-PVC-, polyolefin-, felt- and bituminous-backed carpet tile. It can also be used to bond fiberglass-reinforced vinyl sheet flooring.

Ultrabond ECO® MS 4 LVT

Professional, Hybrid-Polymer Adhesive for Resilient Flooring

Ultrabond ECO MS 4 LVT is a moisture-curing, one-component, silane-modified, hybrid-polymer adhesive specifically designed for the direct bonding of vinyl and rubber flooring in interior applications.

Ultrabond® G21

Premium, Two-Part Urethane Flooring Adhesive

Ultrabond G21 is a two-part reactive adhesive with low volatile organic compounds (VOCs), designed for extreme indoor and outdoor flooring installations. This adhesive aggressively adheres all types of floor coverings to properly prepared metal, asphalt pavement and many other difficult-to-bond-to substrates.

UltraCare® Penetrating Plus Stone, Tile & Grout Sealer

UltraCare Penetrating Plus Stone, Tile & Grout Sealer is a premium, natural-look, water-based penetrating sealer that provides maximum protection against most common stains for all interior and exterior natural stone (marble, limestone, sandstone, slate, granite, travertine, etc.), unglazed ceramic tile, masonry and cement grout. The product can also be used as a pre-grouting sealer.

Ultracolor® Plus FA

Rapid-Setting, "All-in-One" Grout Replacement for Sanded and Unsanded Grouts

Ultracolor Plus FA with DropEffect™ technology is an ultra premium, fine-aggregate, fast-setting, polymer-modified, color-consistent, nonshrinking, efflorescence-free grout for joint widths from 1/16" to 3/4" (1.5 to 19 mm). DropEffect reduces surface absorption to help repel water, dirt and grime from penetrating grout joints. *Ultracolor Plus FA* is specially formulated with MAPEI's High-Hydrated Cement Technology (HCT™) to eliminate the common problems related to Portland-cement grout, such as color consistency and efflorescence. Along with offering higher polymer content, HCT reduces absorption and increases stain resistance when compared with standard-performance cement grouts.

Ultraflex® LFT™

Premium, Large-and-Heavy-Tile Mortar with Polymer

Ultraflex LFT is a premium, non-sag, large-and-heavy-tile mortar and thin-set mortar designed for large-format and heavy tile and stone for interior/exterior floor, wall and countertop installations. This mortar has a high content

of unique dry polymer, resulting in excellent adhesion to the substrate and tile. It is formulated with Easy Glide Technology™ for ease of application.

Ultraplan® 1 Plus

High-Performance, Quick-Setting, Self-Leveling Underlayment

Ultraplan 1 Plus is a quick-setting, self-leveling, self-drying underlayment and repair mix for interior concrete and engineer-approved floors. *Ultraplan 1 Plus* has high strength and is abrasion-resistant, able to withstand light foot traffic after 2 to 3 hours and vehicular rubber-wheel traffic after 3 days.

Ultraplan® Extreme 2

Weather-Resistant, High-Compressive-Strength, Self-Leveling Underlayment

Ultraplan Extreme 2 is an advanced hydraulic-cement-based, self-leveling compound designed for fast-track underlayment applications. It is especially formulated for leveling interior horizontal concrete surfaces where environmental controls are not operational or the building is not enclosed. Once installed, *Ultraplan Extreme 2* is not affected by exposure to intermittent rain exposure after 6 hours or to freezing temperatures after 3 days of curing. Its high compressive strength is designed to allow it to be exposed to traffic as a temporary wear layer until the floor is covered with floor covering. *Ultraplan Extreme 2* has no moisture vapor emission limitations and can be installed without testing on properly prepared concrete substrates. It is the self-leveling compound of choice for use under moisture-controlling adhesive systems and epoxy moisture barriers.

Ultraplan® M20 Plus

Quick-Setting, High-Compressive-Strength Underlayment

Ultraplan M20 Plus is a calcium-aluminate-based, quick-setting, self-leveling underlayment and topping. It is specially formulated for the resurfacing and construction of interior horizontal surfaces as a high-compressive-strength underlayment with maximum resistance to wheel tracking and indentations. *Ultraplan M20 Plus* is suitable for use as a commercial wear topping in warehouse and alternate industrial applications where an exceptional flat and smooth concrete surface is desired. .

Ultratop®

High-Performance, Self-Leveling Concrete Topping

Ultratop is a self-leveling, self-curing, sealed or polished topping that is specially formulated for fast-track resurfacing of horizontal wear surfaces.

Ultratop® SP

High-Performance, Polishable, Self-Leveling Topping for a Fine-Aggregate Finish

Ultratop SP is a polishable, self-leveling, cementitious topping that provides a fine-aggregate exposed finish. *Ultratop SP* is engineered for fast-track resurfacing of horizontal wear surfaces.

Get specific with **MAPEI** and get your **CES credits**

We have all the tools to make your learning experience a success. MAPEI's Architectural Education Program provides quality training modules related to system solutions. Our education programs include in-office presentations and on-demand Web access to our AIA registered courses, giving architects the flexibility to earn CEUs online or in-person at their design office.

Visit us in the U.S. at

www.mapei.com/us/tools-for-architects

or in Canada at

www.mapei.com/ca/tools-for-architects.

SYSTEM SOLUTIONS GUIDE:

HEALTHCARE

PR: 8302 MKT: 22-1910 04/23



MAPEI USA
MAPEI Caribe
MAPEI Canada

MAPEI Headquarters of North America

1144 East Newport Center Drive
Deerfield Beach, Florida 33442
1-888-US-MAPEI (1-888-876-2734) /
(954) 246-8888

Technical Services

1-800-992-6273 (U.S. and Puerto Rico)
1-800-361-9309 (Canada)

Customer Service

1-800-42-MAPEI (1-800-426-2734)

Services in Mexico

0-1-800-MX-MAPEI (0-1-800-696-2734)

Copyright ©2023 by MAPEI Corporation ("MAPEI") and all rights are reserved. All intellectual property rights and other information contained in this document are the exclusive property of MAPEI (or its parent or related companies), unless otherwise noted. No part of this document may be reproduced or transmitted in any form without the prior written consent of MAPEI.

Printed in the USA.

