

SYSTEM SOLUTIONS GUIDE

INDUSTRIAL FLOORING



A WORLDWIDE LEADER

Originally established in 1937, today MAPEI is a privately owned global corporation headquartered in Milan, Italy, with 100 subsidiaries including 86 manufacturing plants in 35 different nations. The company specializes in manufacturing chemical products for building, including waterproofing products, specialty mortars and admixtures for concrete, products to restore historic buildings, and decorative and protective coatings for concrete surfaces. In addition, MAPEI is a world leader in the manufacturing of mortars, grouts, adhesives and complementary products for installing all types of floor and wall coverings. MAPEI Group chose Canada for its first steps away from home, opening the Laval, Québec, plant in 1978 as MAPEI Inc. MAPEI's Canadian footprint currently spans over 4,600 km, with production facilities in Québec, Ontario and British Columbia and a distribution center in Alberta.

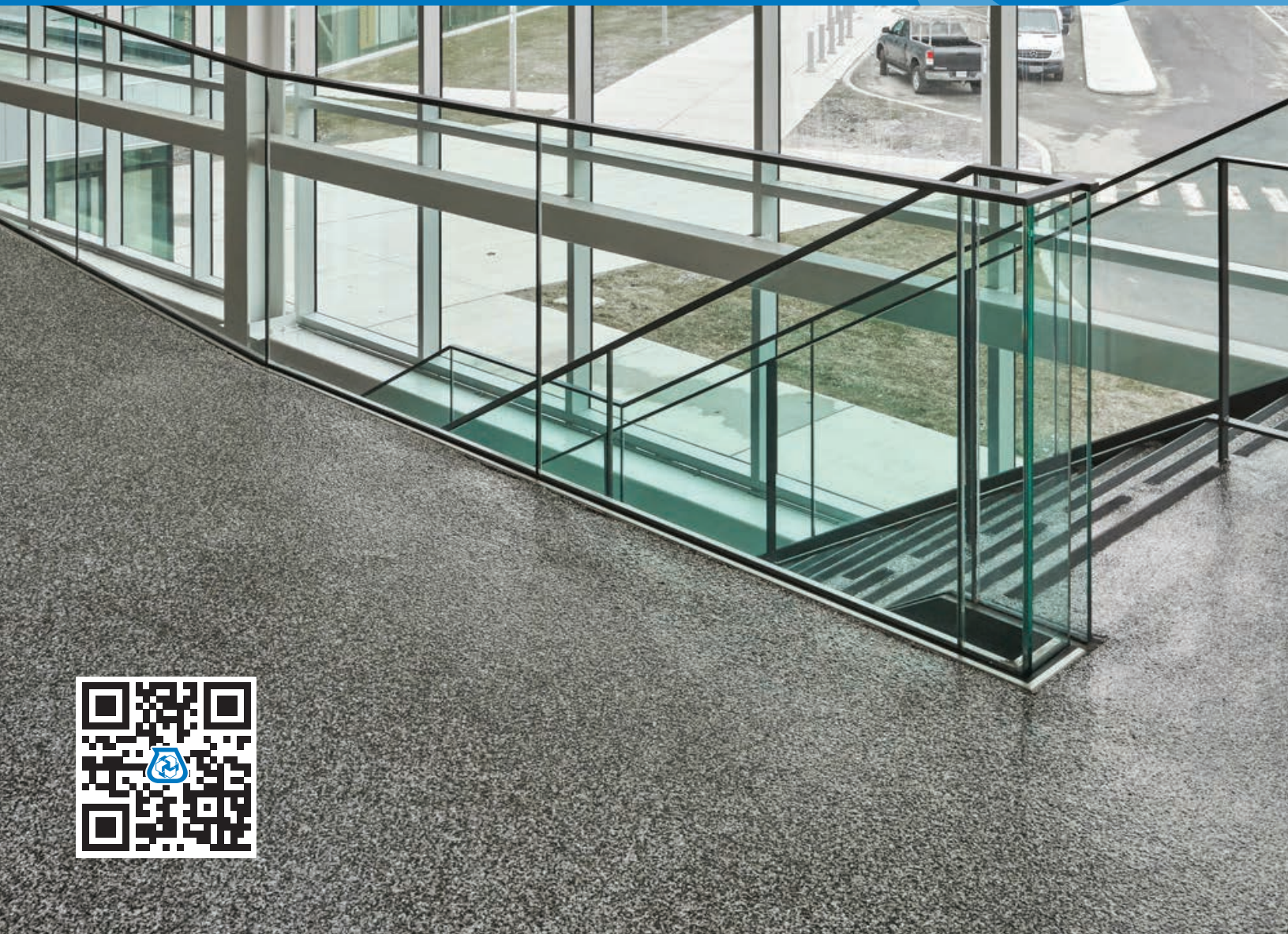


TABLE OF CONTENTS

INTRO	1
INSTITUTIONAL	
Schools / Universities / Stadiums / Convention centers / Correctional facilities:	
Clear epoxy resin or polyaspartic clear resin system and flakes	2
Epoxy with decorative quartz system or polyaspartic clear resin system and flakes	3
Polyaspartic clear resin system and flakes	4
HEALTHCARE AND ANIMAL CARE	
Corridors / In-patient rooms / Laboratories / Lobbies / Operating rooms / Critical care areas / Washrooms:	
Self-leveling fast turnaround granular epoxy resin system	5
RESIDENTIAL	
Garages:	
Clear epoxy resin or polyaspartic clear resin system and flakes	6
ALL INDUSTRIAL APPLICATIONS	
Skimming and repairing surfaces, including vertical and horizontal surfaces:	
Epoxy flooring repair system	7
FOOD AND BEVERAGE	
Wineries / Breweries / Meat and Dairy / Commercial kitchens:	
Multipurpose epoxy resin	8
Easy-to-apply, heavy-duty cementitious urethane mortar (6 to 9 mm)	9
Medium-heavy-duty cementitious urethane broadcast screed/topcoat	10
Wineries / Breweries / Meat and Dairy / Commercial kitchens / Garbage rooms:	
Heavy-duty cementitious urethane mortar (6 to 9 mm)	11
INDUSTRIAL AND MANUFACTURING	
Food industry / Dry or lightly wet processing areas / Pharmaceutical / Chemical plants:	
Medium-heavy-duty cementitious urethane mortar (3 to 6 mm)	12
Mechanical rooms / Equipment rooms:	
Elastomeric polyurethane coating system for mechanical rooms	13
Warehouses / Manufacturing / Wet and dry processing areas / Logistical areas / Janitorial rooms:	
Multi-layer flooring system for heavy-duty environments	14
Pharmaceutical environments:	
Multi-layer flooring system for pharmaceutical environments	15
COMMERCIAL AND PUBLIC SPACES (INTERIOR APPLICATIONS)	
Shopping malls / Commercial spaces / Museums / Residential complexes / Retail stores:	
Concrete topping system	16
Polishable concrete topping system	17
Polishable self-leveling topping with fine-aggregate exposed finish	18
Multi-storey parking decks / Terraces:	
High-vehicular-traffic system with aliphatic topcoat for UV protection	19
Heavy pedestrian and light vehicular traffic parking deck system with UV protection	20
PRODUCT GLOSSARY	21 - 23



PRODUCT LINES OF NORTH AMERICA

 FLOOR COVERING INSTALLATION SYSTEMS

 CONCRETE RESTORATION SYSTEMS

 TILE & STONE INSTALLATION SYSTEMS

 PRODUCTS FOR WOOD FLOORING

 WATERPROOFING SYSTEMS

 PRODUCTS FOR UNDERGROUND CONSTRUCTION (UTT)

 PRODUCTS FOR SPORTS FLOORING

 PRODUCTS FOR STRUCTURAL STRENGTHENING

 CEMENTITIOUS AND RESIN FLOORING SYSTEMS

 CEMENT ADDITIVES

 ADMIXTURES FOR CONCRETE

This brochure presents typical but not limitative use of MAPEI's products. Products presented in this brochure can be used in other applications. Please consult our Technical Data Sheets (TDSs), your MAPEI representative or MAPEI's technical services for customized suggestions.

INTRO

Mapefloor™ Industrial Flooring Systems

Mapefloor products are durable, functional, and quick to install. Developed with the latest technology to meet high-performance requirements in industrial environments such as manufacturing facilities for food and pharmaceuticals, storage facilities, and distribution centers, Mapefloor products are also suitable for use in institutional, commercial, and even residential environments.

Cement-Based Flooring Systems

Mapefloor CPU systems

Because of its chemical resistance, resistance to temperatures and thermal shock, mechanical strength and resistance to abrasion, this family of products is the best choice for food preparation facilities, dairy, industrial kitchens, pharmaceutical, healthcare, animal care, fire stations, and areas receiving heavy traffic.

Resinous Flooring Systems

Mapefloor I 302 SL systems

These systems are suitable for self-smoothing and textured coatings, as well as for multilayering broadcast systems and seal coats for epoxy mortar screeds. They offer excellent chemical and abrasion resistance in both wet and dry processing areas, while creating surfaces that are flat and seamless, with a highly attractive finish. They can be custom tinted to achieve any desired color. This flooring choice is suitable for food preparation facilities, healthcare, intense traffic, shopping malls, animal care and residential garages.

Mapefloor I 320 SL Concept

Similar in performance to other resinous flooring systems, this product offers a built-in aesthetic quality in addition to good chemical resistance and with higher mechanical resistance to abrasion than traditional self-leveling systems. It is well-suited for high-traffic public spaces such as restaurants, bars, hotel lobbies, classrooms, offices and restrooms; also for patient rooms in healthcare environments.

Decorative Finishes

These types of finishes contain colored flakes or decorative quartz materials that are broadcasted into the surface to create a vibrant, attractive appearance. These types of finishes offer a seamless look while also providing an anti-slip surface. They're particularly well-suited for high-traffic public spaces such as locker rooms, sports venues, showrooms, and clinics.

Coatings & Sealants

Resinous flooring systems provide a high-build protective film on the concrete surface, producing a robust, long-wearing abrasion-resistant coating for almost any environment.

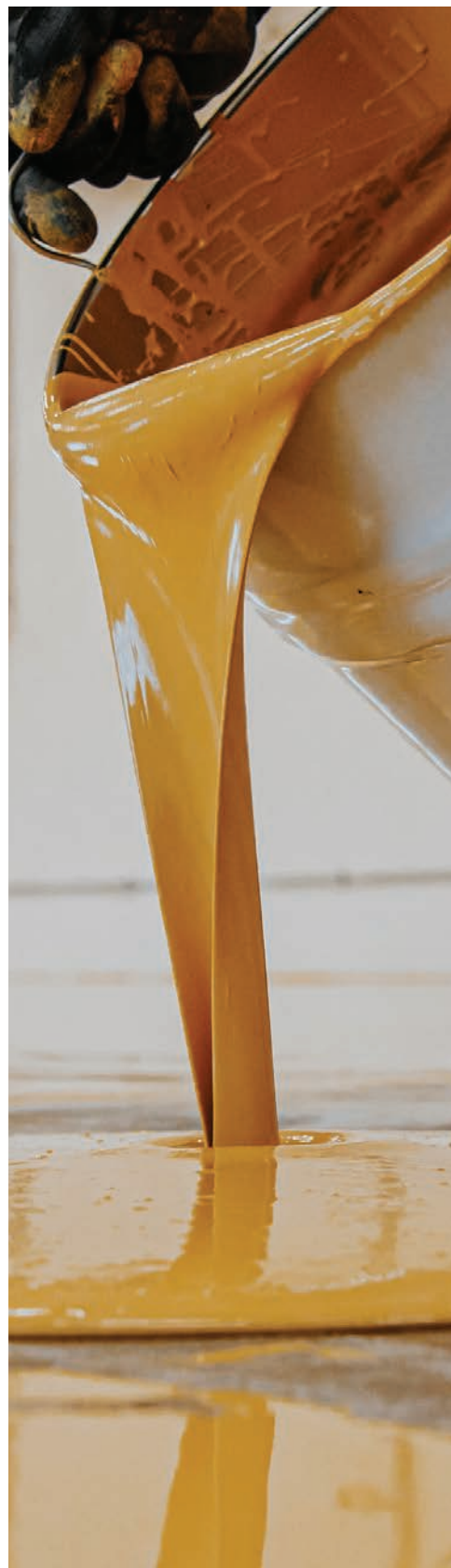
Resinous Flooring Epoxy Mortars

Epoxy mortars provide a strong and durable option for installation over underlying concrete slabs, or anywhere where concrete substrates are deteriorated. Also, an excellent feature and benefit to these types of products is how they allow us to fix structural problems and gently slope floors to allow for better water drainage in industrial settings. This provides a quick turn-around time to the end user, where some cementitious type systems need more time to cure.

Parking Deck Systems

Mapefloor PU 400 FC

The perfect product to provide a hard, durable and waterproof surface for all your deck coating needs. This high-performance polyurethane elastomeric coating provides a waterproofing membrane with an excellent UV-stable and non-slip finish.



INSTITUTIONAL

Schools • Universities • Stadiums • Convention centers • Correctional facilities

This high-gloss epoxy coating with decorative vinyl flakes forms a seamless and easy-to-clean flooring system, with endless color possibilities. The extensive color palette of the flakes offers a wide range of visual textures using either solid colors or color blends. The epoxy resin is available in 12 colors or can be custom tinted to any RAL color. High-performance, low odor, and low VOC.

CLEAR EPOXY RESIN OR POLYASPARTIC CLEAR RESIN SYSTEM AND FLAKES

- 1 Concrete
- 2 *Primer SN* or *Mapecfloor I 900*
- 3 *Mapecoat Universal* or *Mapecfloor I 302 SL**
- 4 *Mapecflakes*
- 5 *Mapecoat Universal* or *Mapecfloor Finish 56*

*Tinted to match a *Mapecflakes* color



This double-broadcast, decorative epoxy quartz flooring system provides a seamless and non-slip finish using multicolored aggregates. This system provides an impermeable, waterproof, anti-slip finish and does not support growth of bacteria, making it low maintenance. The system is offered with an epoxy cove and a protective polyurethane coating.

EPOXY WITH DECORATIVE QUARTZ SYSTEM OR POLYASPARTIC CLEAR RESIN SYSTEM AND FLAKES

- 1 Concrete
- 2 Primer for waterproofing membrane*: *Primer SN* or *Mapecolor I 900*
- 3 Waterproofing membrane*: *Mapecolor PU 418*
- 4 Prime coat: *Mapecolor Universal* or *Primer SN*
- 5 *Mapecolor DQ*
- 6 Intermediate coat: *Mapecolor Universal*
- 7 *Mapecolor DQ*
- 8 Finish coat: *Mapecolor Universal* or *Mapecolor Finish 56*
- 9 *Mapecolor Compact***
- 10 Optional protective coat:
 - *Mapecolor Finish 53 W/L* (gloss)
 - *Mapecolor Finish 54 W/S* (semi-gloss)
 - *Mapecolor Finish 58 W* (matte)

*Optional in shower stalls and mezzanines

**Optional for coves



INSTITUTIONAL

Schools • Universities • Stadiums • Convention centers • Correctional facilities

This high-gloss polyaspartic coating with decorative vinyl flakes is an aesthetic, easy to clean and seamless system with endless color possibilities. This system provides extreme durability, fast return to service, UV-stable, high-performance properties, low odor, and low VOC.

POLYASPARTIC CLEAR RESIN SYSTEM AND FLAKES

- 1 Concrete
- 2 *Mapecfloor Finish 56* or
Mapecfloor I 900 or *Primer SN*
- 3 *Mapecfloor Finish 56* or
*Mapecfloor I 302 SL**
- 4 *Mapecflakes*
- 5 *Mapecfloor Finish 56*

*Tinted to match a *Mapecflakes* color



This system was developed for areas that require a seamless, decorative smooth flooring with a higher resistance to abrasion and wear than traditional self-leveling systems. Well suited for areas that require good chemical and mechanical resistance, fast turnaround, and low maintenance while offering sound reduction for rolling loads, such as patient beds and equipment.

This unique system, available in five decorative colors, can create a custom design similar in look to terrazzo, but at lower cost and requiring little to no maintenance.

SELF-LEVELING FAST TURNAROUND GRANULAR EPOXY RESIN SYSTEM

- 1 Concrete
- 2 *Primer SN* or *Mapefloor I 900*
- 3 *Mapefloor I 320 SL Concept*
- 4 Optional Topcoat:
 - *Mapefloor Finish 630* (high-performance & UV-resistance)
 - *Mapefloor Finish 53 W/L* (gloss)
 - *Mapefloor Finish 54 W/S* (semi-gloss)
 - *Mapefloor Finish 58 W* (matte)
- 5 *Mapefloor Compact**

* The system can be offered with an optional integral cove



RESIDENTIAL

Garages

This high-gloss epoxy coating with decorative vinyl flakes is an attractive, easy to clean and seamless system with endless color possibilities. The extensive color palette of the flakes offers a wide range of visual textures using either solid colors or color blends. The epoxy resin is available in 12 colors or can be custom tinted to any RAL color.

CLEAR EPOXY RESIN OR POLYASPARTIC CLEAR RESIN SYSTEM AND FLAKES

- 1 Concrete
- 2 *Primer SN* or *Mapefloor I 900*
- 3 *Planiseal MB**
- 4 *Mapefloor I 302 SL***
- 5 *Mapeflakes*
- 6 *Mapecoat Universal* or
Mapefloor Finish 56
- 7 Optional Topcoat:
 - *Mapefloor Finish 53 W/L* (gloss)
 - *Mapefloor Finish 54 W/S* (semi-gloss)
 - *Mapefloor Finish 58 W* (matte)

*Optional for substrates with higher moisture/
humidity content

**Tinted to any color desired



This system is specifically designed to enhance adhesion of multilayer floor systems. It is typically applied on concrete surfaces that require a repaired surface on vertical and horizontal substrates.

The system offers a variety of uses, such as an optional integral cove as well as skimming overhead voids on concrete substrates.

EPOXY FLOORING REPAIR SYSTEM*

- 1 Concrete
- 2 *Mapefloor Patch*

* When used, apply any resinous flooring system on top once fully cured.



FOOD AND BEVERAGE

Wineries • Breweries • Meat and Dairy • Commercial kitchens

This epoxy system is suitable for both self-smoothing and textured coatings, as well as for multilayering broadcast systems and seal coats for epoxy mortar screeds. While it creates surfaces that are flat and seamless, with a highly attractive finish, it also offers chemical and abrasion resistance in both wet and dry processing areas, which makes it particularly suitable for the food and beverage industry.

Available in 12 pre-tinted colors or can be ordered in any RAL color upon request.

MULTIPURPOSE EPOXY RESIN

- 1 Concrete
- 2 *Primer SN*
- 3 *Mapesand**
- 4 *Mapecfloor I 302 SL***

**Mapesand Coarse or Mapesand Fine per client's texture needs*

***Offered in System 31, 32, 33 or 34*



EASY-TO-APPLY, HEAVY-DUTY CEMENTITIOUS URETHANE MORTAR (6 to 9 mm)

- 1 Concrete
- 2 *Mapecfloor CPU/RT*
- 3 *Mapecfloor CPU/TC**
- 4 *Mapecfloor CPU/COVE***

*Optional topcoat used as a standalone coating or as a finishing coat for all *Mapecfloor CPU* systems

**Optional. When used, *Primer SN* is required.



FOOD AND BEVERAGE

Wineries • Breweries • Meat and Dairy • Commercial kitchens

MEDIUM-TO-HEAVY-DUTY CEMENTITIOUS URETHANE BROADCAST SCREED/TOPCOAT

- 1 Concrete
- 2 Mapefloor CPU/SBF
- 3 Mapesand*
- 4 Mapefloor CPU/TC
- 5 Mapefloor CPU/COVE**

*Mapesand Coarse or Mapesand Fine per client's texture needs

**Optional. When used, Primer SN is required.



Cementitious urethane mortar systems were originally developed for the food and beverage processing industries. They provide moisture/thermal shock resistance, chemical resistance, are easy to clean, and perfect for areas subject to frequent washing. They offer a fast installation solution while having low odor and low VOC.

Their benefits don't stop there; these systems are an excellent choice for areas that require resistance to mechanical stress, abrasion and impact from heavy equipment such as pallet jacks.

**HEAVY-DUTY CEMENTITIOUS
URETHANE MORTAR (6 to 9 mm)**

- 1 Concrete
- 2 Mapefloor CPU/HD
- 3 Mapefloor CPU/TC*
- 4 Mapefloor CPU/COVE**

*Optional topcoat used as a standalone coating or as a finishing coat for all Mapefloor CPU systems

**Optional. When used, Primer SN is required.



INDUSTRIAL AND MANUFACTURING

Food industry • Dry or lightly wet processing areas • Pharmaceutical • Chemical plants

This is the right solution for floors subjected to medium-high loads and/or forklift traffic, high chemical and mechanical stresses, and subject to thermal shock.

MEDIUM-HEAVY-DUTY CEMENTITIOUS URETHANE MORTAR (3 to 6 mm)

- 1 Concrete
- 2 *Mapefloor CPU/MF**
- 3 *Mapefloor CPU/TC***
- 4 *Mapefloor CPU/COVE****

* *Primer SN* is required. When *Mapefloor CPU/MF* is applied neat, broadcast *Primer SN* with quartz sand.

** Optional topcoat used as a standalone coating or as a finishing coat for all *Mapefloor CPU* systems

*** Optional. When used, *Primer SN* is required.



The *Mapecoat* system for mechanical rooms is designed to both waterproof and protect mechanical equipment room floors. The key component of the system, the intermediate elastomeric polyurethane coat, has enough flexibility to waterproof and bridge cracks, while offering good abrasion resistance to withstand traffic.

ELASTOMERIC POLYURETHANE COATING SYSTEM FOR MECHANICAL ROOMS

- 1 Concrete
- 2 *Primer SN* or *Mapecoat I 900*
- 3 *Mapecoat PU 418*
- 4 *Mapesand**
- 5 *Mapecoat I 302 SL* or
Mapecoat Finish 415 NA or
Mapecoat I 24

**Mapesand Coarse* or *Mapesand Fine* per client's texture needs



INDUSTRIAL AND MANUFACTURING

Warehouses • Manufacturing • Wet and dry processing areas • Logistical areas • Janitorial rooms

This system is specifically designed to enhance adhesion of multilayer floor systems. It is typically applied on concrete surfaces that require re-profiling or to protect new concrete floors in heavy duty environments. This 100%-solids epoxy resin provides high abrasion and impact resistance, making it an excellent solution for floors subjected to high forklift traffic in which the surface could also be wet.

The system offers a variety of slip-resistance finishes and optional integral cove as well as infinite color possibilities.

MULTI-LAYER FLOORING SYSTEM FOR HEAVY-DUTY ENVIRONMENTS

- 1 Concrete
- 2 *Primer SN* or *Mapecfloor I 900*
- 3 *Mapecfloor EP 19* or *Mapecfloor EP 20*
- 4 *Primer SN* or *Mapecfloor I 900*
- 5 *Mapecfloor I 302 SL**

*Offered in system 31, 32, 33 or 34



This system is specifically designed to enhance adhesion of multilayer floor systems. It is typically applied on concrete surfaces that require re-profiling or to protect new concrete floors in heavy duty environments. This 100%-solids epoxy resin provides a high chemical resistance to acids and alkalis, with a superior abrasion and impact resistance, making it an excellent solution for floors subjected to high forklift traffic in which the surface could also be wet.

MULTI-LAYER FLOORING SYSTEM FOR PHARMACEUTICAL ENVIRONMENTS

- 1 Concrete
- 2 Primer SN or Mapefloor I 900
- 3 Mapefloor EP 19 or Mapefloor EP 20
- 4 Primer SN or Mapefloor I 900
- 5 Mapecoat I 24



COMMERCIAL AND PUBLIC SPACES (INTERIOR APPLICATIONS)

Shopping malls • Commercial spaces • Museums • Residential complexes • Retail stores

This fast-setting, self-leveling, concrete topping is ideal for environments that require the aesthetic effect of concrete with extra chemical and abrasion resistance. Finish the installation with an optional application of a topcoat available in different finishes.

CONCRETE TOPPING SYSTEM

- 1 Concrete
- 2 *Primer SN*
- 3 *Ultratop**
- 4 *Mapecfloor Finish 630*
(high-performance & UV-resistance)
- 5 Optional Topcoat:
 - *Mapecfloor Finish 53 W/L* (gloss)
 - *Mapecfloor Finish 54 W/S* (semi-gloss)
 - *Mapecfloor Finish 58 W* (matte)

* Available in white or gray



COMMERCIAL AND PUBLIC SPACES (INTERIOR APPLICATIONS)

Shopping malls • Commercial spaces • Museums • Residential complexes • Retail stores

POLISHABLE CONCRETE TOPPING SYSTEM

- 1 Concrete
- 2 *Primer SN*
- 3 *Ultratop PC*
- 4 *Mapecrete Hard LI*



COMMERCIAL AND PUBLIC SPACES (INTERIOR APPLICATIONS)

Shopping malls • Commercial spaces • Museums • Residential complexes • Retail stores

POLISHABLE SELF-LEVELING TOPPING WITH FINE-AGGREGATE EXPOSED FINISH

- 1 Concrete
- 2 *Primer SN*
- 3 *Ultratop SP*
- 4 *Mapecrete Hard LI*
- 5 *Mapecrete Protector FF*



Flexible waterproofing and protective membrane system for heavy pedestrian and vehicular traffic. This system offers high flexibility with good crack-bridging capacity, high resistance to wear and abrasion, low odor and VOC compliance for use in interior occupied environments. The system also has an excellent resistance to chemical agents, including diluted acids, bases, oil, fuel and salts.

The aliphatic topcoat version can be used in exterior environments exposed to direct sunlight.

HIGH-VEHICULAR-TRAFFIC SYSTEM WITH ALIPHATIC TOPCOAT FOR UV PROTECTION

- 1 Concrete
- 2 *Primer SN or Mapefloor PU Primer*
- 3 *Mapefloor PU 400 FC*
- 4 *Mapefloor Finish 415 NA*
- 5 *Mapesand**
- 6 *Mapefloor Finish 450*
- 7 *Mapesand**

**Mapesand Coarse or Mapesand Fine per client's texture needs, broadcast to refusal and backroll*



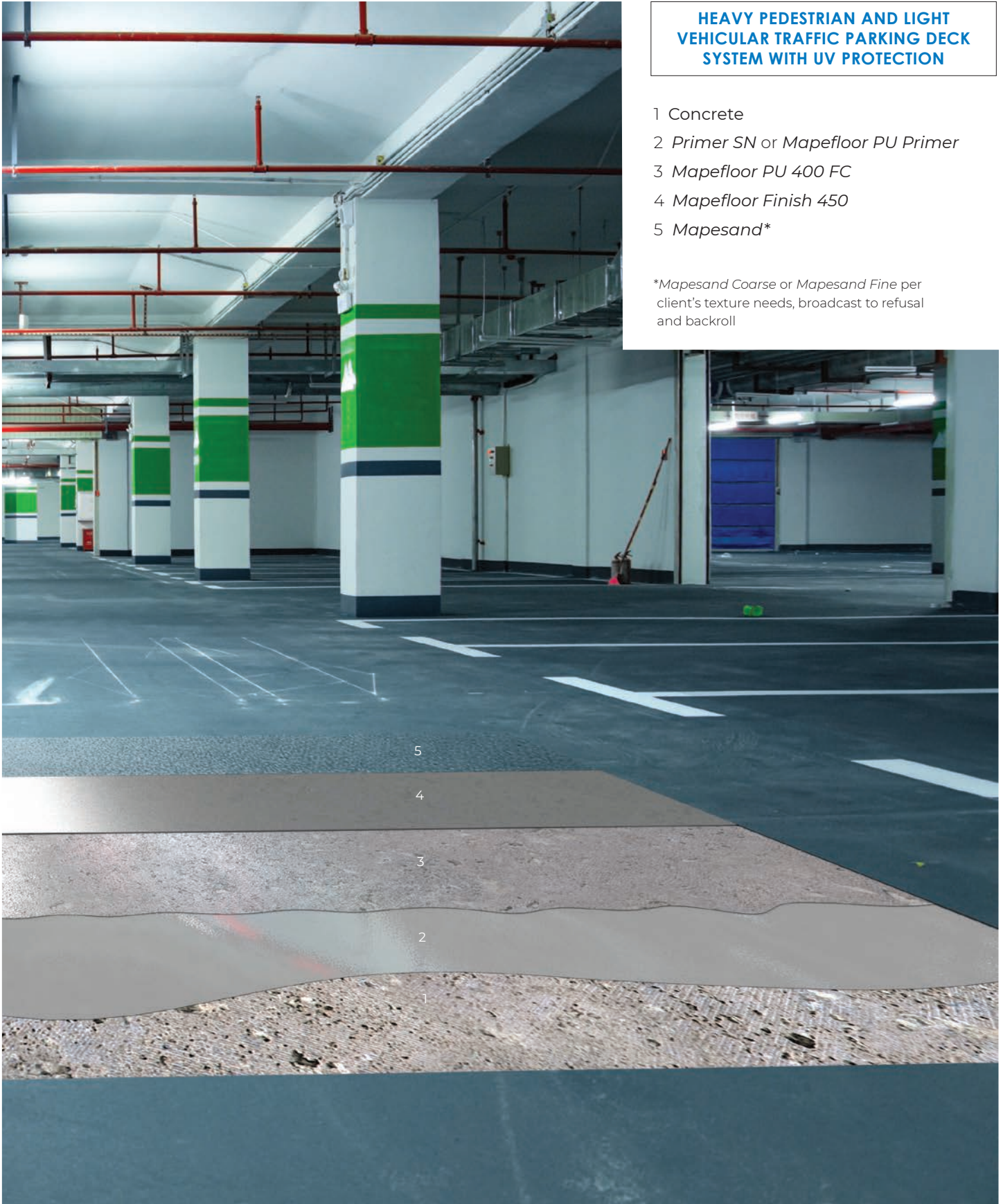
COMMERCIAL AND PUBLIC SPACES (INTERIOR APPLICATIONS)

Multi-storey parking decks • Terraces

HEAVY PEDESTRIAN AND LIGHT VEHICULAR TRAFFIC PARKING DECK SYSTEM WITH UV PROTECTION

- 1 Concrete
- 2 *Primer SN or Mapefloor PU Primer*
- 3 *Mapefloor PU 400 FC*
- 4 *Mapefloor Finish 450*
- 5 *Mapesand**

**Mapesand Coarse or Mapesand Fine per client's texture needs, broadcast to refusal and backroll*



PRODUCT GLOSSARY

Mapecoat™ I 24 [NA]

Two-Component, High-Chemical-Resistant Epoxy Coating

Mapecoat I 24 is a two-component, 100%-solids, high-gloss epoxy resin providing a high chemical resistance.

Mapecoat™ Universal [NA]

Two-Component, Transparent, Epoxy Resin for Industrial Flooring

Mapecoat Universal is a two-component, high-gloss, epoxy resin typically used as a primer, intermediate coat, binder and seal coat for industrial flooring. *Mapecoat Universal* is especially effective at enhancing the adhesion of multilayer flooring systems, such as serving as a clear binder for the installation of decorative, multicolored quartz aggregate and flake finishes.

Mapecrete™ Hard LI

Lithium Silicate Densifier and Sealer for Concrete

Mapecrete Hard LI is a water-based, VOC-free, lithium silicate solution used to densify, seal and dustproof horizontal, hard-troweled concrete surfaces. It penetrates the concrete surface, chemically reacts with the free lime and produces a dense, hard matrix within the concrete and a more durable surface on top.

Mapecrete™ Protector FF

High-Gloss, Film-Forming Protective Coating for Concrete

Mapecrete Protector FF is a film-forming, high-gloss protective coating designed to increase the stain resistance of interior, polished or hard-troweled concrete floors.

Mapeflakes™ [NA]

Decorative Vinyl Flakes for Broadcasting into Resinous Flooring Systems

Mapeflakes are composed of water-based resin materials, inorganic minerals, additives and various pigments used for broadcasting resinous flooring systems.

Mapecfloor™ Compact [NA]

Decorative Trowel System for Industrial Flooring

Mapecfloor Compact is a multi-purpose, three-component trowel system composed of an epoxy resin combined with multicolored quartz aggregates, and sealed with clear topcoats. *Mapecfloor Compact* is formulated for horizontal and vertical industrial floors requiring high chemical and mechanical resistance, and a superior aesthetic finish.

Mapecfloor™ CPU/HD [NA]

Multi-Component, Heavy-Duty, Polyurethane/Cement-Based Screed with Thermal Shock Resistance

Mapecfloor CPU/HD is a multi-component, heavy-duty, polyurethane/cement-based screed with a high level of chemical resistance. It is formulated to cover industrial floors that are subject to heavy traffic flow, aggressive chemicals and thermal shock where a lightly textured surface is required, by applying at 1/4" to 3/8" (6 to 9 mm) in thickness. *Mapecfloor CPU/HD* complies with standards applied in the food and beverage industry.

Mapecfloor™ CPU/MF [NA]

Multi-Component, Medium- to Heavy-Duty, Self-Leveling, Polyurethane/Cement-Based Screed

Mapecfloor CPU/MF is a multi-component, medium- to heavy-duty, self-leveling, polyurethane/cement-based screed with a high level of chemical resistance. It is formulated to cover industrial floors that are subject to medium to heavy traffic flow where a lightly textured surface is required, by applying at 1/8" to 1/4" (3 to 6 mm) in thickness. *Mapecfloor CPU/MF* is designed as a self-leveling floor topping that provides an easy-to-clean, smooth surface and is typically used in general industrial applications.

Mapecfloor™ CPU/RT [NA]

Multi-Component, Easy-to-Trowel, Polyurethane/Cement-Based Screed

Mapecfloor CPU/RT is a multi-component, easy-to-trowel, polyurethane/cement-based screed with a high level of chemical resistance. It is formulated to cover industrial floors that are subject to heavy traffic flow, aggressive chemicals and thermal shock where a lightly textured surface is required, by applying at 1/4" to 3/8" (6 to 9 mm) in thickness. *Mapecfloor CPU/RT* complies with standards applied in the food and beverage industries.

Mapecfloor™ CPU/SBF

Multi-Component, High-Strength, Self-Leveling Polyurethane/Cement-Based Screed with Enhanced Flowability

Mapecfloor CPU/SBF is a multi-component, polyurethane/cement-based screed with enhanced flowability that provides a high level of chemical resistance. It is formulated to cover industrial floors that are subject to medium to heavy traffic flow, aggressive chemicals and thermal shock where a lightly textured surface is required, by applying at 3/16" to 1/4" (4.5 to 6 mm) in thickness. Selected aggregate must be broadcasted into wet screed to produce a non-slip surface. *Mapecfloor CPU/SBF* complies with the standards applied in the food and beverage industries.

Mapecfloor™ CPU/COVE [NA]

Multi-Component, Polyurethane/Cement-Based Coving and Detailing Screed

Mapecfloor CPU/COVE is a multi-component, polyurethane/cement-based screed used to form coves between walls and floors or other features in industrial floor screeds made for use with *Mapecfloor CPU* products. Application thickness ranges from 1/8" to 1/4" (3 to 6 mm).

Mapecfloor™ CPU/TC [NA]

Multi-Component, Polyurethane/Cement-Based Coating for Horizontal and Vertical Finishes

Mapecfloor CPU/TC is a multi-component, polyurethane/cement-based coating used for horizontal and vertical finishes on polyurethane/cementitious systems for industrial flooring. It is also used as a protective coating for concrete as well as cementitious walls and joints.

Mapecfloor™ DQ [NA]

Decorative Quartz for Broadcasting into Resinous Flooring Systems

Mapecfloor DQ is a medium-grade aggregate used for broadcasting into resinous flooring systems.

Mapecfloor™ EP 19 [NA]

Three-Component Epoxy Resin Mortar for Industrial Flooring

Mapecfloor EP 19 is a three-component, epoxy binder for industrial flooring, specifically designed to enhance adhesion of multilayer floor systems, such as MAPEI's *Mapecfloor EP 20* and *Mapecfloor I 302 SL* system. It is typically applied on concrete surfaces that require leveling with a slight slope and repairing deteriorated concrete, such as floor slabs in institutional buildings, storage and logistical areas.

Mapecfloor™ EP 20 [NA]

Three-Component Epoxy Resin Mortar for Industrial Flooring

Mapecfloor EP 20 is a three-component, epoxy binder for industrial flooring, specifically designed to enhance adhesion of multilayer floor systems, such as MAPEI's *Mapecfloor EP 19* and *Mapecfloor I 302 SL* system. It is typically applied on concrete surfaces that require re-profiling, such as floor slabs in institutional buildings, storage and logistical areas.

Mapecfloor™ Finish 415 NA

Two-Component, Polyurethane Topcoat for Mapecfloor Parking Deck System

Mapecfloor Finish 415 NA is a two-component, solvent-free, aromatic polyurethane topcoat specifically designed to provide a protective wear coat for elevated concrete surfaces where the *Mapecfloor* parking deck system is utilized.

Mapecfloor™ Finish 450

Two-Component, Aliphatic Polyurethane Topcoat

Mapecfloor Finish 450 is a two-component, solvent-free, aliphatic polyurethane topcoat specifically designed to provide a protective wear coat for elevated concrete surfaces in areas that are exposed to direct sunlight.

Mapecfloor™ Finish 53 W/L [NA]

Two-Component, Clear, Gloss, Aliphatic Polyurethane Coating

Mapecfloor Finish 53 W/L is a two-component, aliphatic polyurethane coating product in water dispersion with

a gloss finish that is clear or colored. *Mapecfloor Finish 53 W/L* provides a high-performance finish on general-service resinous flooring products and *Ultratop®* systems.

Mapecfloor™ Finish 54 W/S [NA]

Two-Component, Clear, Semi-Gloss, Aliphatic Polyurethane Coating

Mapecfloor Finish 54 W/S is a two-component, aliphatic polyurethane coating in water dispersion with a semi-gloss finish that is clear or colored. *Mapecfloor Finish 54 W/S* provides a high-performance finish on general-service resinous flooring products and *Ultratop* systems.

Mapecfloor™ Finish 56

Two-Component, Clear, Multipurpose, Polyaspartic Resin System

Mapecfloor Finish 56 is a two-component, clear, high-gloss, polyaspartic resin system that is typically used as a UV-resistant primer, grout coat, binder and seal coat for industrial flooring. It is specifically formulated to enhance the adhesion of multi-layer flooring systems, and is particularly suitable as a clear binder for decorative, multicolored quartz aggregate such as *Mapecfloor DQ* and flake finishes, such as *Mapecflakes™*.

Mapecfloor™ Finish 58 W [NA]

Two-Component, Clear, Matte, Aliphatic Polyurethane Coating

Mapecfloor Finish 58 W [NA] is a two-component, aliphatic polyurethane coating in water dispersion with a clear, matte finish. *Mapecfloor Finish 58 W [NA]* provides a high-performance finish on general-service resinous flooring products and *Ultratop [NA]* systems.

Mapecfloor™ Finish 630 [NA]

Two-Component, Clear Protective Acrylic Coating for Floors

Mapecfloor Finish 630 is a two-component, protective, acrylic filming agent in a water dispersion for floors made from concrete and *Ultratop* systems. *Mapecfloor Finish 630* provides a high-performance finish on *Ultratop* systems.

Mapecfloor™ I 302 SL [NA]

Two-Component, Multipurpose, Epoxy Resin for Industrial Flooring

Mapecfloor I 302 SL is a two-component, epoxy resin for industrial flooring, suitable for both self-smoothing and textured coatings, as well as for multilayering broadcast systems and seal coats for epoxy mortar screeds. *Mapecfloor I 302 SL* offers excellent chemical and abrasion resistance in both wet and dry processing areas, which makes it particularly suitable for the food and beverage industry, shopping centers and industrial warehouses. *Mapecfloor I 302 SL* creates surfaces that are flat and seamless, with a highly attractive finish.

Mapecfloor™ I 900 [NA]

Two-Component Epoxy Resin for Industrial Flooring

Mapecfloor I 900 is a two-component, low-viscosity epoxy resin that is used as a primer for resinous flooring systems.

Mapecfloor™ I 320 SL Concept

Two-Component, Self-Leveling, Epoxy Coating with Colored Granular Finish for Decorative Floors

Mapecfloor I 320 SL Concept is a two-component, self-leveling, epoxy coating with a colored granular finish for decorative floors.

Mapecfloor™ Patch

Thixotropic Epoxy Paste Adhesive

Mapecfloor Patch is a two-component, solvent-free, 100%-solids epoxy patching adhesive for skimming and repair of horizontal, vertical or overhead interior concrete. *Mapecfloor Patch* exhibits excellent bond strength and chemical resistance.

Mapecfloor™ PU 400 FC

Two-Component, Fast-Curing, Polyurethane Basecoat for *Mapecfloor* Parking Deck System

Mapecfloor PU 400 FC is a two-component, fast-curing, polyurethane basecoat specifically designed for use as a waterproofing membrane for elevated concrete surfaces where the *Mapecfloor* parking deck system is utilized. With its high elongation and crack-bridging properties, *Mapecfloor PU 400 FC* is suited as a basecoat layer on concrete substrates subject to vibration.

Mapecfloor™ PU 418

Two-Component Polyurethane Waterproofing Membrane

Mapecfloor PU 418 is a two-component, elastomeric and crack-bridging polyurethane waterproofing membrane.

Mapecfloor™ PU Primer [NA]

Two-Component Polyurethane Primer

Mapecfloor PU Primer is a two-component, polyurethane-based primer that can be used for initial application of *Mapecfloor* parking deck systems or as a recoat primer for already installed polyurethane deck systems.

Mapesand™ Coarse

Calibrated, 16/30 Mesh Sand

Mapesand Coarse is a calibrated, washed and oven-dried, 16/30 mesh silica sand for use with resin and epoxy primers to create texture, which is necessary for the primer to bond with self-leveling and topping compounds.

Mapesand™ Fine

Calibrated, 20/40 Mesh Sand

Mapesand Fine is a calibrated, washed and oven-dried, 20/40 mesh silica sand for use as an extender, and to improve the bond of resin and epoxy primers with self-leveling and topping compounds.

Planiseal® MB

Moisture Barrier and Consolidating Epoxy

Planiseal MB is a 100%-solids, epoxy moisture barrier that is designed to effectively stop moisture-related problems with toppings, as well as act as a surface-consolidating epoxy.

Primer SN™ [NA]

Two-Component, Filled, Epoxy Primer

Primer SN is a two-component, filled, epoxy primer specifically designed to enhance adhesion of cement-based decorative and multilayer flooring, such as MAPEI's *Mapecfloor™* products, *Ultratop* products, *PlaniLevel™* products and *Planitop EL*.

Ultratop® [NA]

High-Performance, Self-Leveling Concrete Topping

Ultratop [NA] is a self-leveling, self-curing topping that is specially formulated for fast-track resurfacing of horizontal wear surfaces.

Ultratop® PC

High-Performance, Polishable Concrete Topping

Ultratop PC is a polishable, self-leveling, cementitious topping. *Ultratop PC* is engineered to provide a thin resurfacing material that is extremely dense, hard and durable.

Ultratop® SP

High-Performance, Polishable, Self-Leveling Topping for a Fine-Aggregate Finish

Ultratop SP is a polishable, self-leveling, cementitious topping that provides a fine-aggregate exposed finish. *Ultratop SP* is engineered for fast-track resurfacing of horizontal wear surfaces.





MAPEI Inc.

2900 Francis-Hughes Avenue
Laval, Quebec H7L 3J5

Technical Services

1-800-361-9309

Customer Service

1-800-42-MAPEI (1-800-426-2734)

Copyright ©2023 by MAPEI Inc. ("MAPEI") and all rights are reserved. All intellectual property rights and other information contained in this document are the exclusive property of MAPEI (or its parent or related companies), unless otherwise noted. No part of this document may be reproduced or transmitted in any form without the prior written consent of MAPEI.

Printed in Canada.

