



Mapefloor™
Cementitious
Polyurethane
Flooring
Products

for the Food and
Beverage Industry

TABLE OF CONTENTS

Page 1	Introduction
Page 2	Fields of application
Page 4	Mapefloor CPU/MF [NA]
Page 6	Mapefloor CPU/HD [NA]
Page 8	Mapefloor CPU/RT [NA]
Page 10	Mapefloor CPU/COVE [NA]
Page 12	Mapefloor CPU/TC [NA]
Page 14	Mapefloor CPU/SBF



INTRODUCTION

The implementation of strict health and safety standards in the workplace is affecting many industries. The food and beverage industry is no exception. Hygiene requirements regarding food safety require that specific materials are used for surfaces in processing and packaging areas.

For industrial environments that treat, process and package food and beverages, the flooring must meet high performance requirements in chemical resistance, resistance to temperatures and thermal shock, mechanical strength and resistance to abrasion. The following are some of the affected sectors:

- Food preservation facilities
- Fish processing facilities
- Abattoirs
- Meat packing facilities
- Pasta factories
- Roasting facilities
- Sugar processing and packing facilities
- Wineries and distilleries
- Carbonated beverage processing facilities
- Mineral-water bottling plants
- Retail distribution and packaging
- Cold-storage rooms
- Commercial bakeries





FIELDS OF **APPLICATION**

MAPEI's *Mapefloor* polyurethane-cement-based coatings include a complete range of products specifically designed for use in the food and beverage industry. These products are in compliance with current hygiene and safety requirements within areas used for processing and packing food and beverages. *Mapefloor* products are durable, functional and quick to install thanks to the use of specific, latest-technology resinous materials that meet all the requirements for such environments:

- Perfectly continuous surfaces with an extremely limited inclusion of joints, to avoid areas where dirt and bacteria may collect
- High resistance to frequent contact with chemical substances (acids, base chemicals, blood, milk, wine, etc.)
- Easy to clean and resistant to frequent washing
- Safe, non-slip, surfaces, even in the presence of liquids
- Resistant to mechanical stress, abrasion and impact caused by the continuous movement of mechanical transport such as forklifts and pallet trucks
- Surfaces that are totally impermeable to liquids and oils
- Surfaces that are resistant to frequent, considerable thermal shocks



Mapefloor CPU/MF

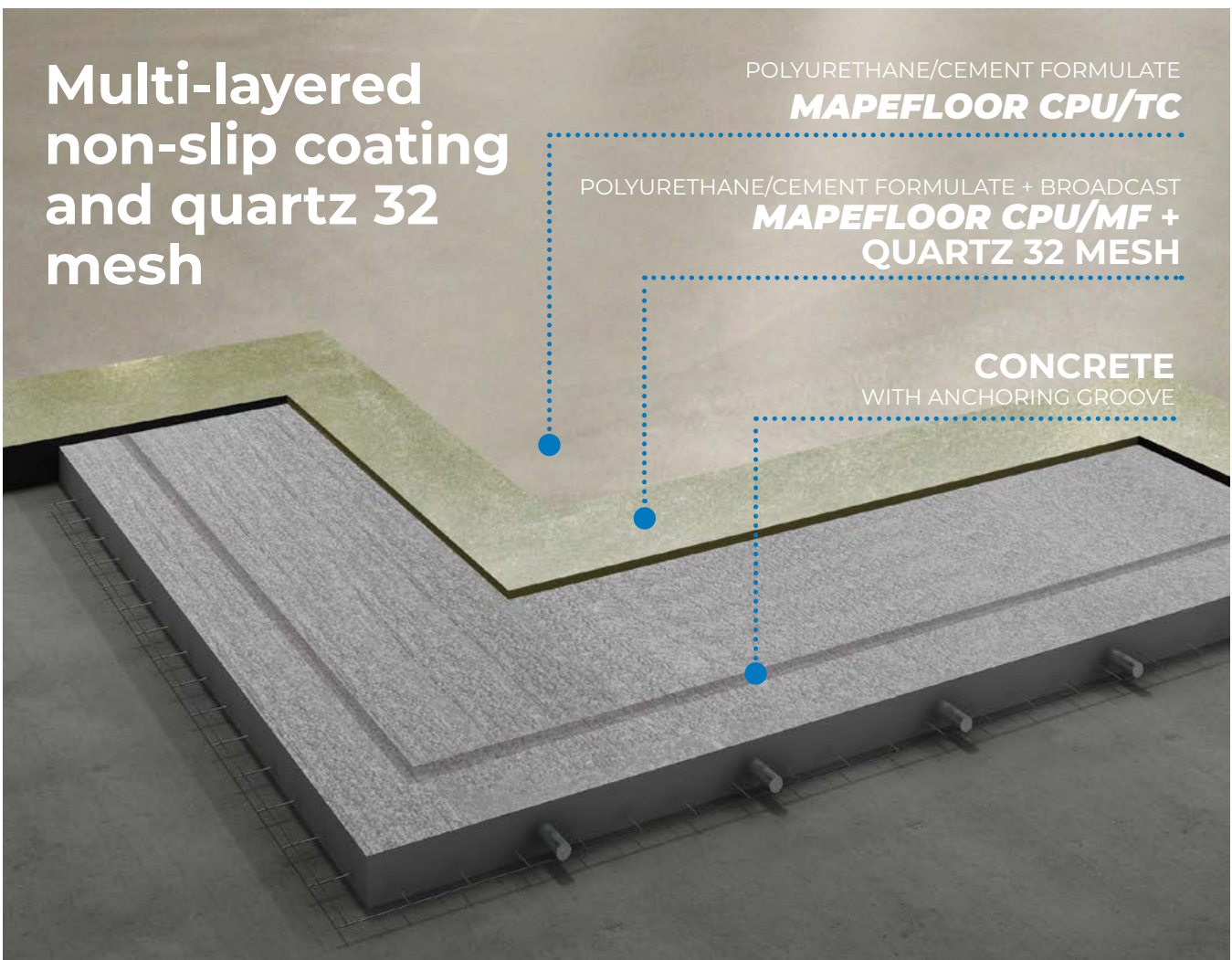
Multi-component, high-strength polyurethane/cement-based self-leveling screed with a moderate flow grade and a high resistance to chemicals. For coating industrial floors in layers from 1/8" to 1/4" (3 to 6 mm) thick.

Multi-layered non-slip coating and quartz 32 mesh

POLYURETHANE/CEMENT FORMULATE
MAPEFLOOR CPU/TC

POLYURETHANE/CEMENT FORMULATE + BROADCAST
**MAPEFLOOR CPU/MF +
QUARTZ 32 MESH**

CONCRETE
WITH ANCHORING GROOVE



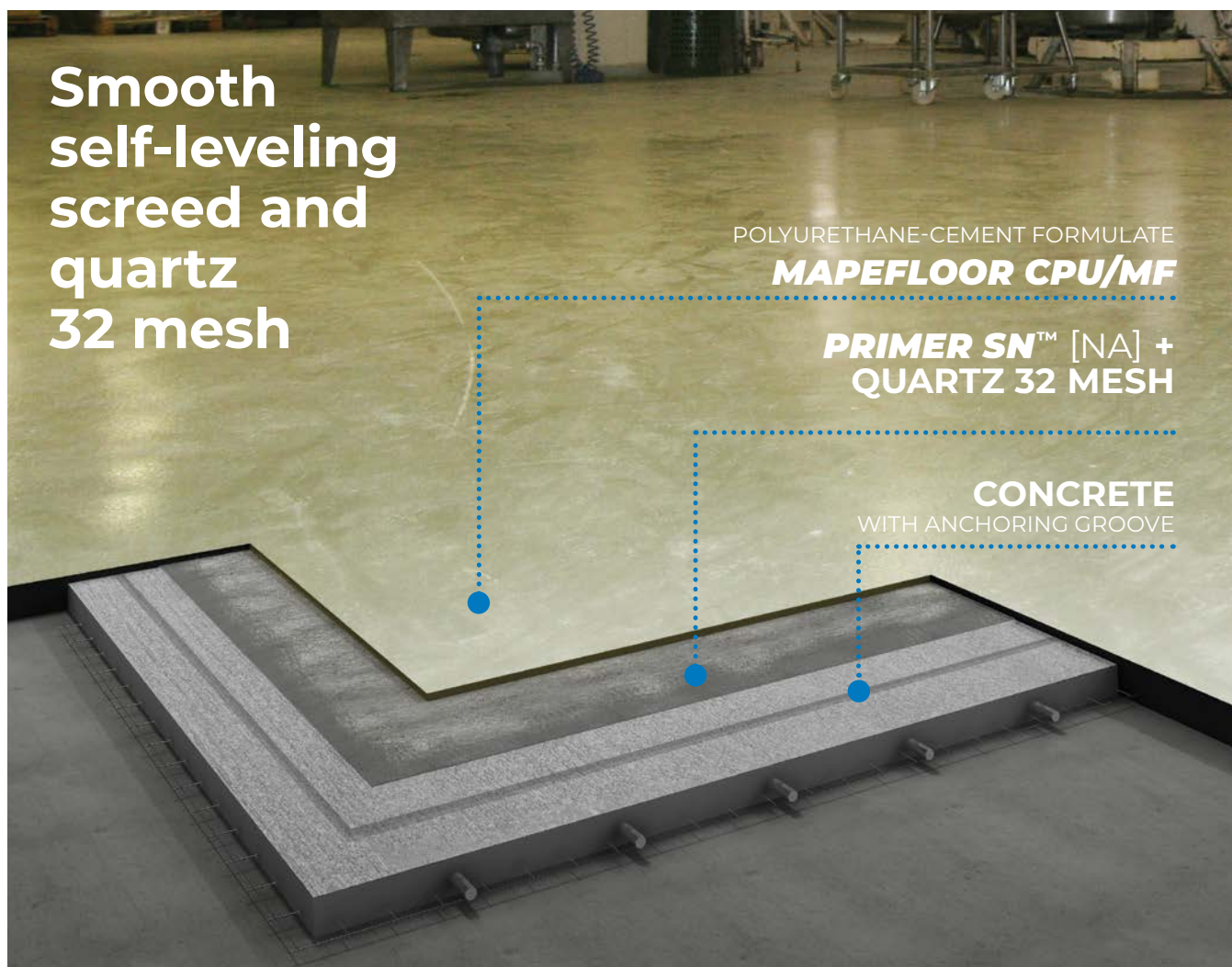
FIELDS OF APPLICATION

For coating floors in:

- Wineries
 - Breweries
 - Bottling plants
 - Food and beverage industry in general
-

PRODUCT CHARACTERISTICS

Type	Self-leveling and multi-layered
Thickness	1/8" to 1/4" (3 to 6 mm)
Available colors	Gray, green, beige, red, blue and yellow
Where to use	Particularly suitable for all areas of the food and beverage industry, including production areas and wet areas
Chemical resistance	High; also resistant to organic acids, tannin, lactic acid, oleic acid, sugars, etc.
Resistance to thermal shocks	Up to 158°F (70°C)
Resistance to temperatures	In-service temperature range for 1/4" (6 mm) thick coating from -40°F to 158°F (-40°C to 70°C)
Mechanical strength	High
Resistance to abrasion	High



Mapefloor CPU/HD

Multi-component, high-strength polyurethane/cement-based screed with a heavy trowel grade and a high resistance to chemicals. For coating industrial floors in layers from 1/4" to 3/8" (6 to 9 mm) thick.

FIELDS OF APPLICATION

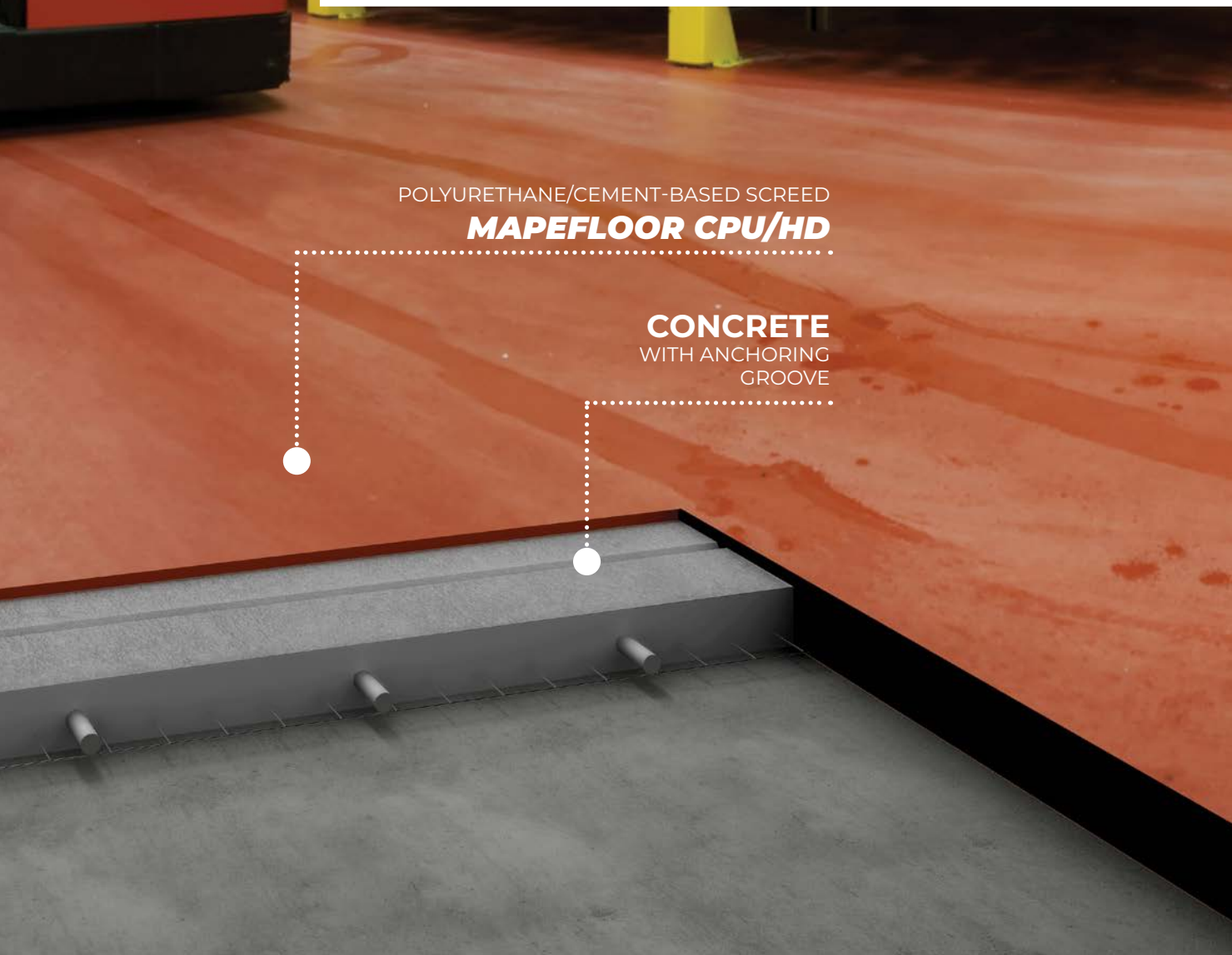
For coating floors in:

- Dairy products industry
 - Wineries, breweries and bottling plants
 - Areas subject to intense traffic of pallet trucks and moving vehicles
 - Production areas in food processing plants that are subject to frequent washing in variable temperatures, such as fish and meat processing plants
-



PRODUCT CHARACTERISTICS

Type	Screed
Thickness	1/4" to 3/8" (6 to 9 mm)
Available colors	Gray, green, beige, red, blue and yellow
Where to use	Particularly suitable for all areas of the food and beverage industry, including production areas
Chemical resistance	High; resistant to almost all chemical substances, such as diluted acids, alkalis, salts, oils, grease, hydrocarbons and aggressive gases
Resistance to thermal shocks	Up to 248°F (120°C) for a 3/8" (9 mm) thick coating
Resistance to temperatures	In-service temperature range for a 3/8" (9 mm) thick coating: from -40°F to 248°F (-40°C to 120°C)
Mechanical strength	High; suitable for floors subject to heavy traffic
Resistance to abrasion	High



POLYURETHANE/CEMENT-BASED SCREED

MAPEFLOOR CPU/HD

CONCRETE
WITH ANCHORING
GROOVE

Mapefloor CPU/RT

Multi-component, easy to-apply, high-strength polyurethane/cement-based screed with a rake/trowel grade and high resistance to chemicals. For coating industrial floors in layers from 1/4" to 3/8" (6 to 9 mm) thick.

FIELDS OF APPLICATION

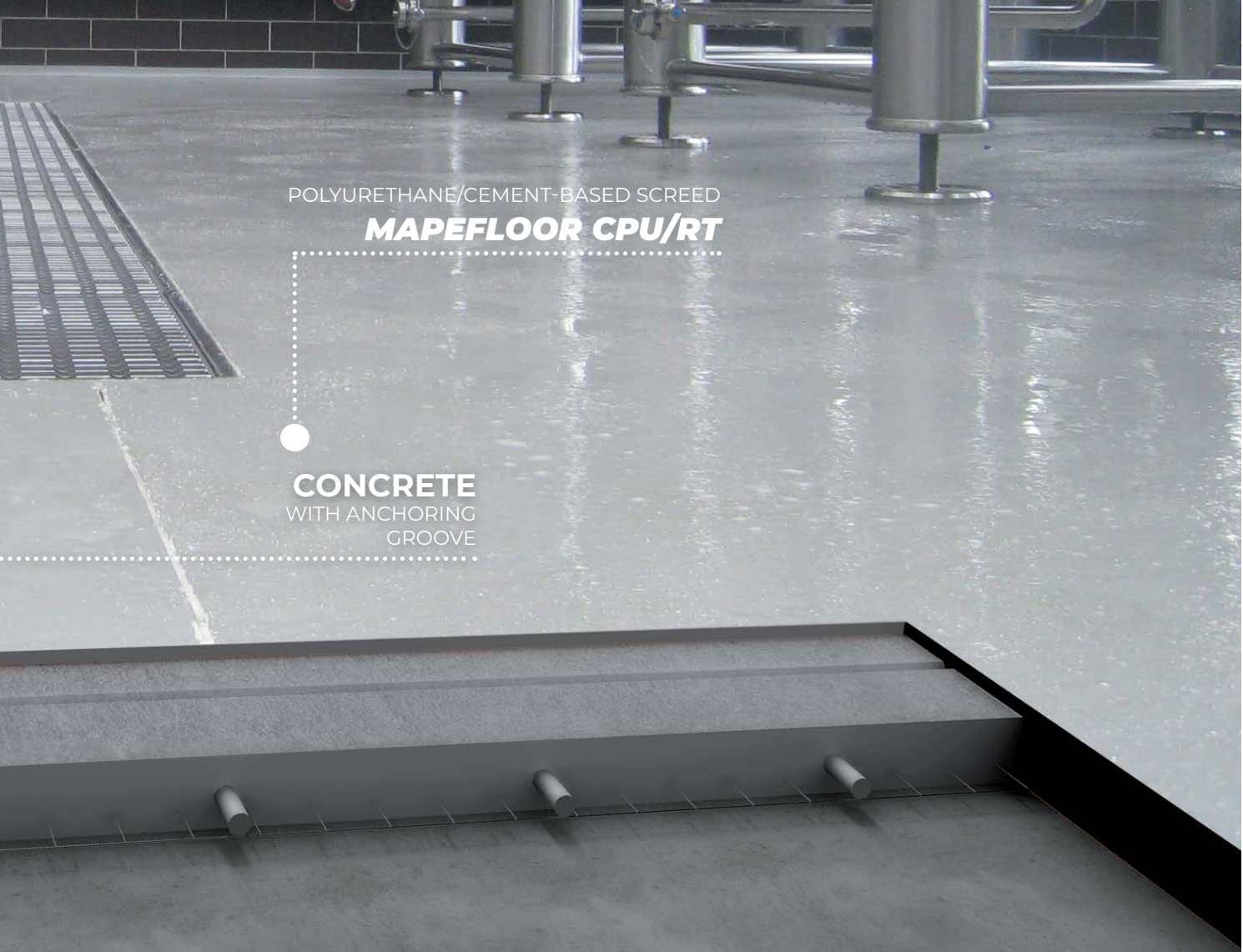
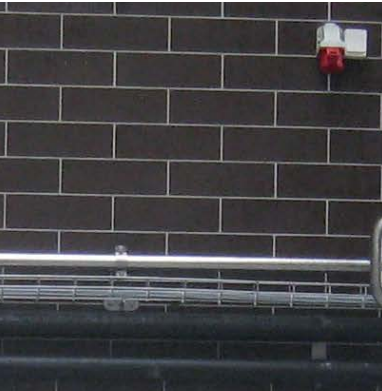
For coating floors in:

- Dairy products facilities
 - Wineries, breweries and bottling plants
 - Areas subject to intense traffic of pallet trucks and moving vehicles
 - Production areas in food processing plants subject to frequent washing, such as fish and meat processing plants
-



PRODUCT CHARACTERISTICS

Type	Screed
Thickness	1/4" to 3/8" (6 to 9 mm)
Available colors	Gray, green, beige, red, blue and yellow
Where to use	Particularly suitable for all areas of the food and beverage industry, including production areas
Chemical resistance	High; resistant to almost all chemical substances, such as diluted acids, alkalis, salts, oils, grease, hydrocarbons and aggressive gases
Resistance to thermal shocks	Up to 248°F (120°C) for a 3/8" (9 mm) thick coating
Resistance to temperatures	In-service temperature range for a 3/8" (9 mm) thick coating: from -40°F to 248°F (-40°C to 120°C)
Mechanical strength	High; suitable for floors subject to heavy traffic
Resistance to abrasion	High



POLYURETHANE/CEMENT-BASED SCREED

MAPEFLOOR CPU/RT

CONCRETE
WITH ANCHORING
GROOVE

Mapefloor CPU/COVE

Multi-component, polyurethane/cement-based screed used to form coves between walls and floors or other features in industrial floor screeds. Made for use with products from the *Mapefloor CPU* line. Application thickness ranges from 1/8" to 1/4" (3 to 6 mm).

FIELDS OF APPLICATION

For use before applying polyurethane/cement floor-coating products from the *Mapefloor CPU* line to:

- Shape fillets to blend in walls and floors
 - Repair small holes
 - Shape fillets around plinths, run-off channels, drains, etc.
 - Reconstruct edges, chipped joints, etc.
-



PRODUCT CHARACTERISTICS

Type	Vertical screed
Thickness	1/8" to 1/4" (3 to 6 mm)
Available colors	Gray, green, beige, red, blue and yellow
Where to use	For covings between walls, floors and other features in industrial floor coverings made using products from the <i>Mapefloor CPU</i> line
Chemical resistance	High
Mechanical strength	High; can absorb impact from vehicular traffic
Resistance to abrasion	High



Mapefloor CPU/TC

Multi-component, polyurethane/cement-based coating used for finishing coats on polyurethane/cementitious systems for industrial floors with a top-coat grade. Also a protective coating for concrete and cementitious walls and joints in between walls and floors.

FIELDS OF APPLICATION

Washable, protective coating resistant to chemicals for:

- Top coat for *Mapefloor CPU/MF* polyurethane/cementitious coating with a smooth finish or for broadcast systems in damp environments such as *Mapefloor CPU/SBF*
 - Optional top coat for *Mapefloor CPU/RT* or *Mapefloor CPU/HD* coating
 - Top coat for areas blended in with *Mapefloor CPU/COVE*, such as between walls and floors
-



PRODUCT CHARACTERISTICS

Type	Coating
Thickness	8 to 10 mils
Available colors	Gray, green, beige, red, blue and yellow
Where to use	Finishing coat particularly suitable for all areas of the food industry, including production areas, damp areas and areas between walls and floors
Chemical resistance	High; resistant to almost all chemical substances, such as diluted acids, alkalis, salts, oils, grease, hydrocarbons and aggressive gases
Resistance to thermal shocks and temperatures	Resistant to the same thermal shock and service temperatures as the coating system if applied within 24 hours of the base layer hardening
Mechanical strength	High
Resistance to abrasion	High



Mapefloor CPU/SBF

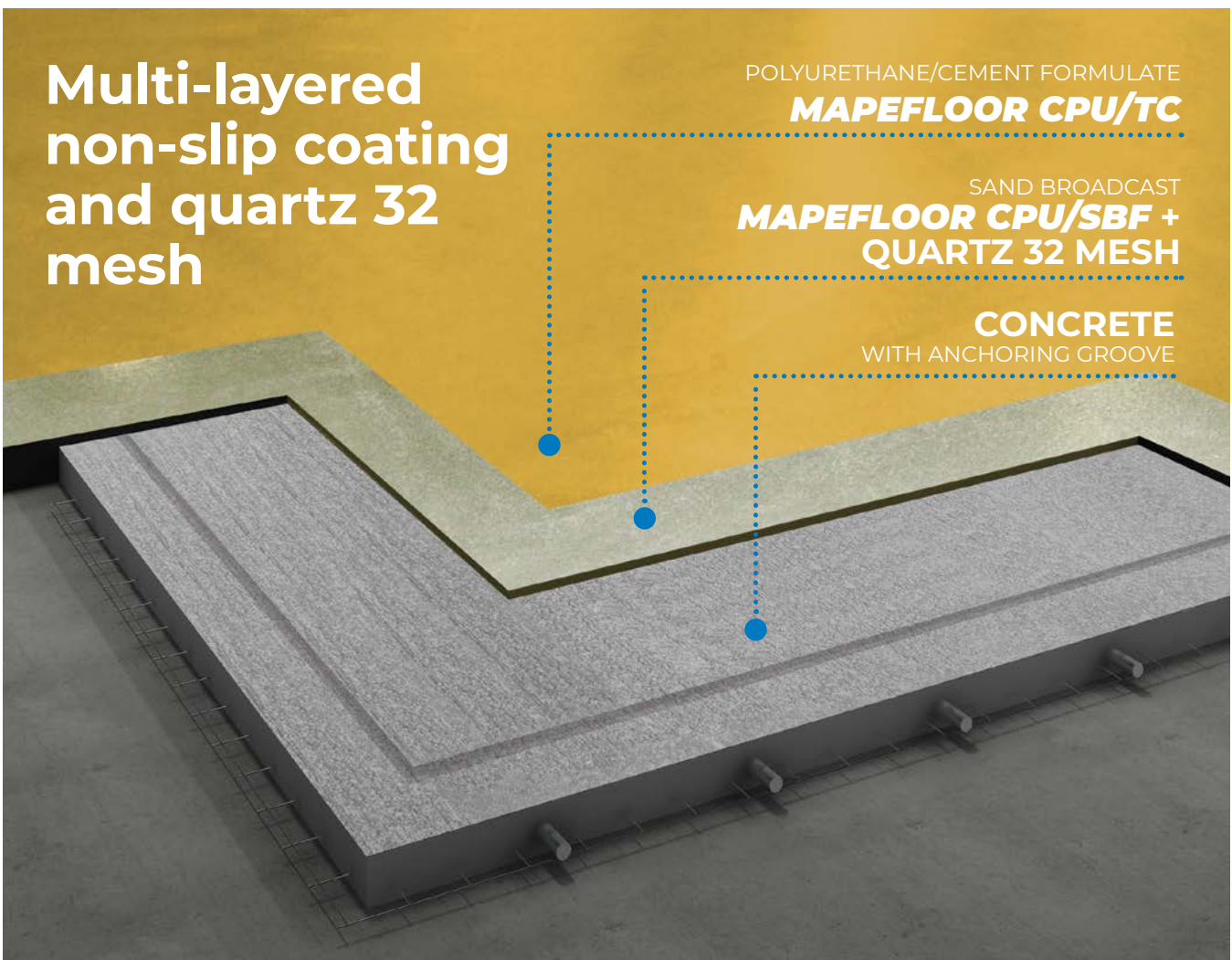
Multi-component, high-strength polyurethane/cement-based self-leveling screed with enhanced flowability that provides a high level of chemical resistance. For coating industrial floors in layers from 3/16" to 1/4" (4.5 to 6 mm) thick.

Multi-layered non-slip coating and quartz 32 mesh

POLYURETHANE/CEMENT FORMULATE
MAPEFLOOR CPU/TC

SAND BROADCAST
**MAPEFLOOR CPU/SBF +
QUARTZ 32 MESH**

CONCRETE
WITH ANCHORING GROOVE



FIELDS OF APPLICATION

For coating floors in:

- Wineries
 - Breweries
 - Bottling plants
-

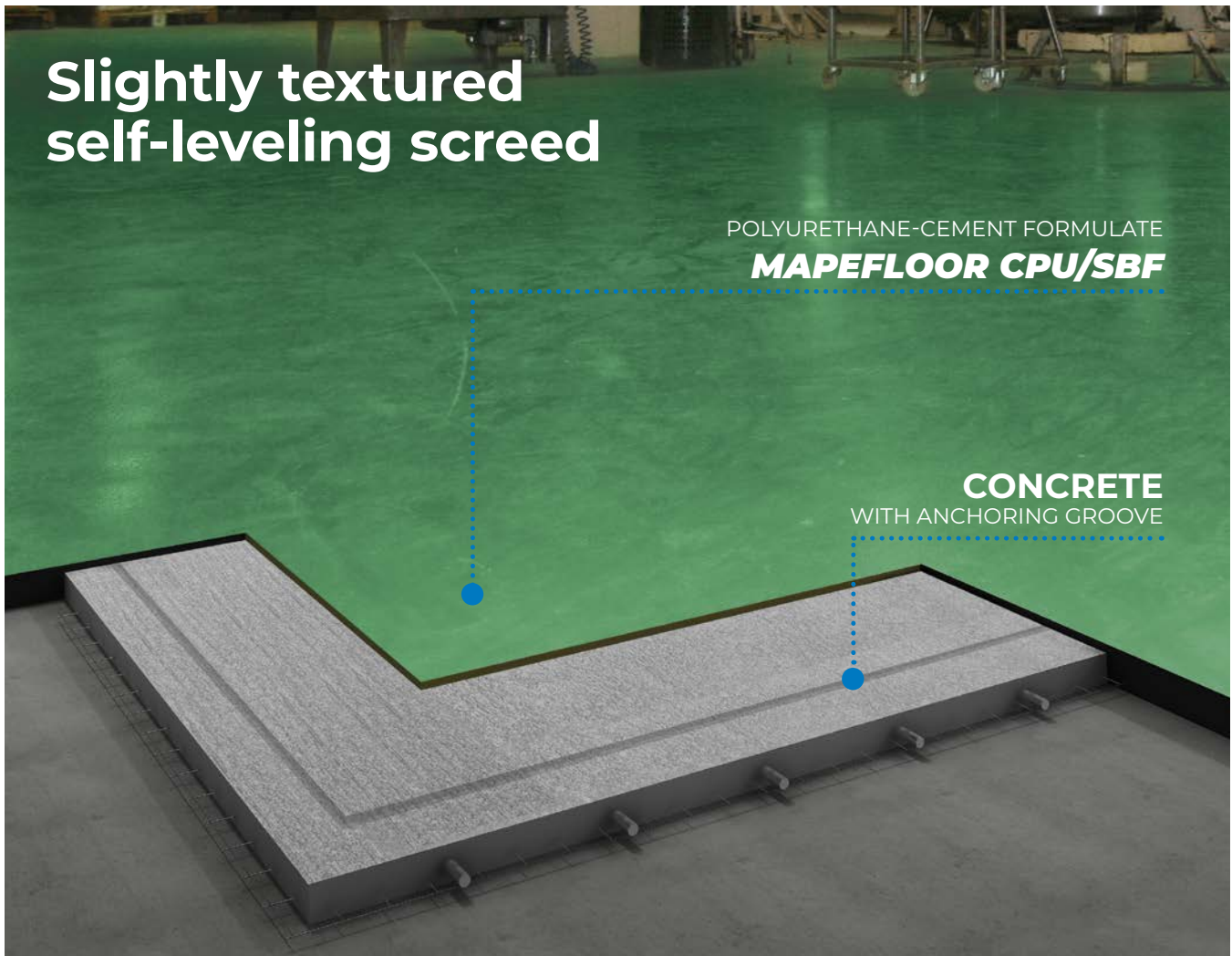
PRODUCT CHARACTERISTICS

Type	Multi-layered
Thickness	3/16" to 1/4" (4.5 to 6 mm)
Available colors	Gray, green, beige, red, blue and yellow
Where to use	Particularly suitable for all areas of the food and beverage industry, including production areas and wet areas
Chemical resistance	High; also resistant to organic acids, tannin, lactic acid, oleic acid, sugars, etc.
Resistance to thermal shocks	Up to 158°F (70°C)
Resistance to temperatures	In-service temperature range for 1/4" (6 mm) thick coating from -40°F to 158°F (-40°C to 70°C)
Mechanical strength	High
Resistance to abrasion	High

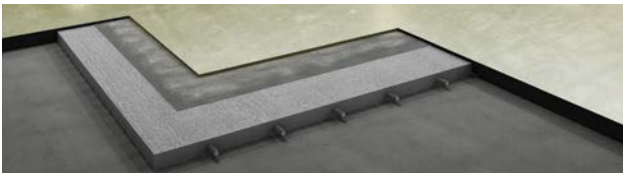
Slightly textured self-leveling screed

POLYURETHANE-CEMENT FORMULATE
MAPEFLOOR CPU/SBF

CONCRETE
WITH ANCHORING GROOVE



Where *Mapefloor* Products Are Used



Mapefloor CPU/MF



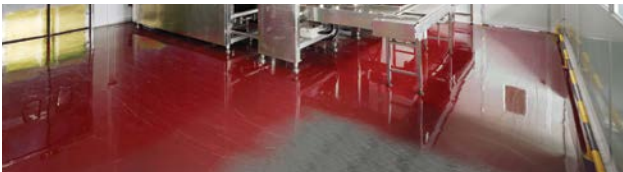
Mapefloor CPU/HD



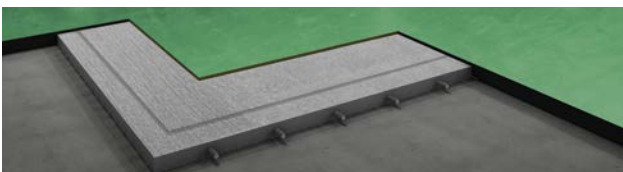
Mapefloor CPU/RT



Mapefloor CPU/COVE



Mapefloor CPU/TC



Mapefloor CPU/SBF

Food preserving	Sugar processing industry	Mineral-water bottling plants	Industries subject to heavy vehicular traffic	Fish and meat processing plants	Dairy products industry	Bottling plants
						
						
						
						
						
						



MAPEI Inc.
2900 Francis-Hughes Avenue
Laval, Quebec H7L 3J5

Technical Services
1-800-361-9309

Customer Service
1-800-42-MAPEI (1-800-426-2734)

Copyright ©2023 by MAPEI Inc. ("MAPEI") and all rights are reserved. All intellectual property rights and other information contained in this document are the exclusive property of MAPEI (or its parent or related companies), unless otherwise noted. No part of this document may be reproduced or transmitted in any form without the prior written consent of MAPEI.

Printed in Canada.

