



SYSTEM SOLUTIONS GUIDE

# SPORTS FLOORING



<b>INTRO</b> .....	02
<b>SOCCER</b> .....	04
<b>FOOTBALL</b> .....	05
<b>BASEBALL/SOFTBALL</b> .....	06
<b>TRACK/RUNNING</b> .....	07
<b>GOLF</b> .....	08
<b>TENNIS</b> .....	09
<b>PICKLEBALL</b> .....	10
<b>BATTING CAGE</b> .....	11
<b>OUTDOOR BASKETBALL</b> .....	12
<b>INDOOR BASKETBALL</b> .....	13
<b>WEIGHT ROOM</b> .....	14
<b>INDOOR GYMNASIUM</b> .....	15
<b>PRODUCT INDEX</b> .....	17



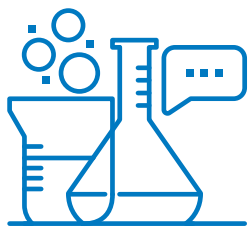
Since MAPEI's founding in 1937, there has been a passion for every facet of sports. MAPEI entered the professional sports industry in the 1976 Olympic Games in Montreal with the introduction of a novel adhesive system for the installation of running tracks. Thanks to years of continuous innovation, MAPEI's sport-flooring systems offer cutting-edge solutions to build the most aesthetically pleasing and highest-quality sports facilities.



## Full-Breadth Product Lines

MAPEI has supplied residential and major commercial projects with total installation solutions for tile and stone, floor coverings and decorative concrete as well as concrete restoration and admixtures for more than 85 years.

<b>1</b>	<b>2</b>	<b>3</b>	<b>4</b>	<b>5</b>
Tile & Stone Installation Systems	<i>UltraCare</i> Stone, Tile, Grout Care and Maintenance Solutions	Floor Covering Installation Systems	Products for Sports Flooring	Products for Wood Flooring
<b>6</b>	<b>7</b>	<b>8</b>	<b>9</b>	<b>10</b>
Concrete Restoration Systems	Products for Structural Strengthening	Products for Underground Construction (UTT)	Admixtures for Concrete	Waterproofing Systems
<b>11</b>	<b>12</b>	<b>13</b>	<i>* USA &amp; Puerto Rico only</i>	
Cement Additives	Products for the Marine Industry*	Cementitious and Resin Flooring Systems		

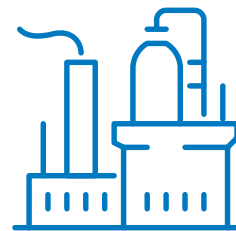


### Innovative Research & Development

Worldwide, a considerable amount of MAPEI employees are involved in the development of new technologies and product innovations, keeping our customers at the forefront of the construction industry. The company has taken the additional initiative of focusing its R&D efforts on environmentally sustainable solutions.

To remain on the cutting edge of innovation, MAPEI reinvests revenues into researching and developing new products and technologies. This corporate priority has produced such innovations as:

- Easy Glide Technology™, which offers extreme ease of application, yielding a buttery consistency that reduces fatigue during installation.
- *Ultrabond ECO*® product formulations beginning in the 1980s with extremely low emissions of volatile organic compounds (VOCs) for improved indoor air quality.
- FastTrack Ready™ products, which reduce the required steps of an installation and/or perform more quickly than current methods.



### Quality Control and Efficient Manufacturing

In North America, most MAPEI facilities have been certified to ISO 9001 quality management and ISO 14001 environmental management standards. Our products are produced according to exacting standards, strictly adhering to process and procedural guidelines with documented compliance. This rigid production format is vigilantly followed to ensure that every product is produced uniformly from batch to batch.

#### Powerful, Efficient and Sustainable Manufacturing

Cutting-edge production technology is used in MAPEI's production facilities, where the entire manufacturing process is optimized by continual quality control, from raw materials to final packaging.

MAPEI's production statistics are impressive: 90 production facilities in 35 countries on five continents. Along with the 27,900 tons of finished products that are manufactured at our production facilities every day, we receive just as many tons of raw materials to keep our sites supplied around the world.

MAPEI's production efforts are reflected through optimization of logistics costs, close proximity to our customers, and a guarantee of maximum efficiency of production processes while respecting the environment.



## Warranty Program

To bring it all together, MAPEI complements the industry's best products with simple, easy-to-understand requirements for comprehensive warranties – allowing you to build systems within desired warranty timeframes.

MAPEI's advanced systems give you the built-in confidence provided by superior in-field technical support and the Best-Backed<sup>SM</sup> warranties in the business.

## Professional Support

### Knowledgeable Sales Force

MAPEI offers the largest, most highly trained sales force within the industry to serve your needs for product application/installation recommendations. Its representatives are focused on supporting you with product knowledge, product demonstrations, product information, marketing support materials and other relevant tools to help you generate business.

### Technical Expertise

An in-house Technical Services Product Support Team responds to customers' telephone inquiries with answers to installation challenges in real time. In addition, Regional Technical Services Representatives provide field support, including jobsite visits, product training and advice on product selection.

Call us at 1-800-992-6273 (flooring, U.S. and Puerto Rico), 1-888-365-0614 (non-flooring, U.S. and Puerto Rico) or 1-800-361-9309 (Canada).

### Customer Service Plus

MAPEI's standards for customer service are best-in-class. Our leadership includes such service innovations as:

- Customer-friendly, efficient processes
- One-call resolution
- Employee commitment to effective customer dialog

Call us at 1-800-42-MAPEI (1-800-426-2734).



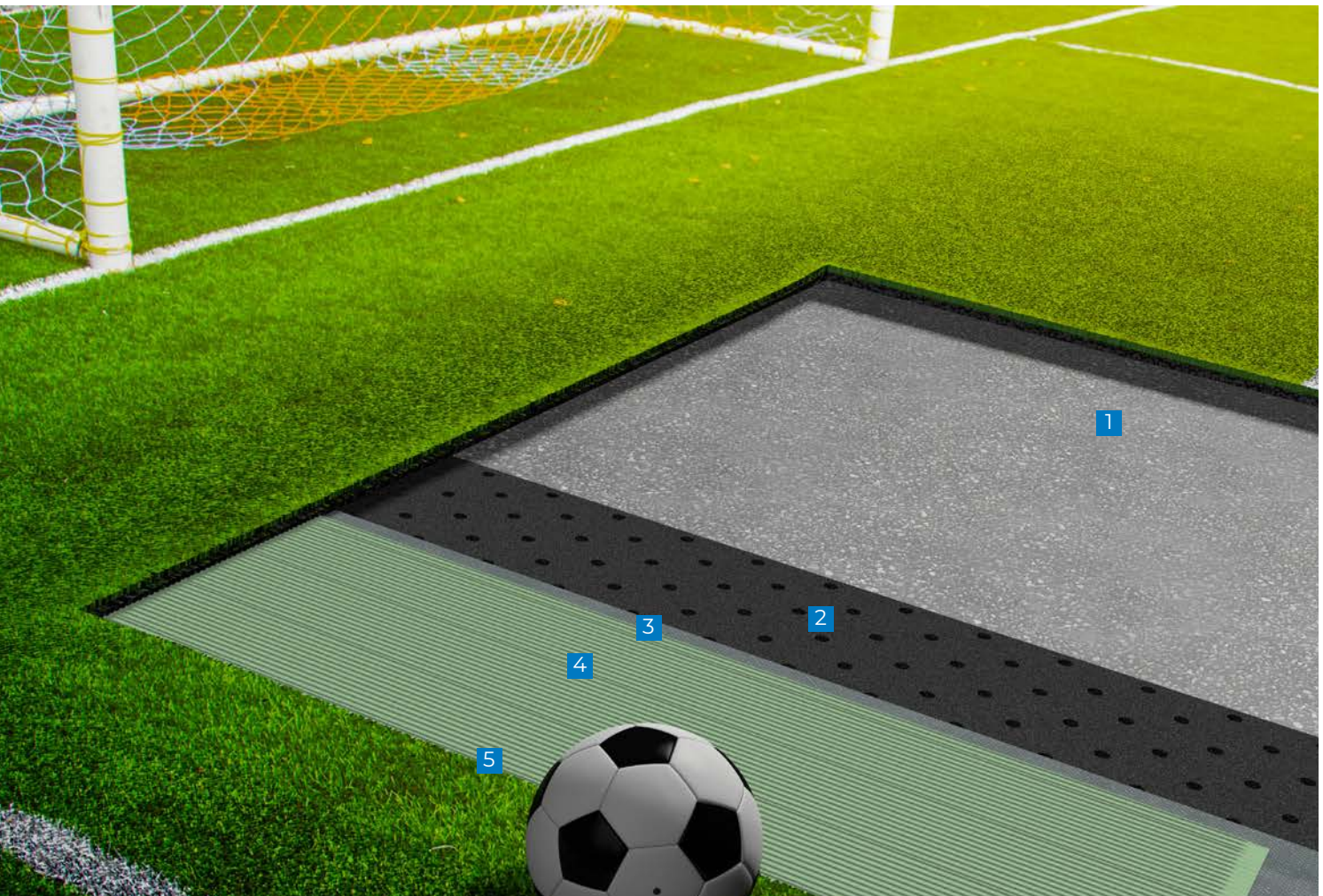
# SOCCER

## SOCCER FIELD

### INSTALLATION OF SYNTHETIC GRASS

MAPEI offers solutions for many sports including soccer, with adhesive and seam tape systems that exceed FIFA's bond-strength requirements to ensure long-lasting and quality installations.

- 1 Drainage stone
- 2 Shock pad
- 3 *Ultrabond Turf Tape*
- 4 *Ultrabond Turf PU 1K*
- 5 Synthetic turf



When it comes to the incredible stresses on a synthetic-turf football field during training and games, it is critical to ensure that the sub-base and seam strength are up to the task. *Mapesoil* products offer a great solution to create a strong sub-base that will last for the lifetime of the field.

- 1 Existing soil
- 2 Existing soil with *Mapesoil 100*
- 3 *Ultrabond Turf Tape*
- 4 *Ultrabond Turf PU 2K*
- 5 Synthetic turf

## FOOTBALL

---

### FOOTBALL FIELD

---

INSTALLATION OF  
SYNTHETIC GRASS

---



# BASEBALL/ SOFTBALL

## BASEBALL FIELD

### INSTALLATION OF SYNTHETIC GRASS

With the complexity of a synthetic-turf installation on a baseball or softball field, it is critical to use an adhesive and sub-base combination that will ensure the proper laying of the turf over raised pitching mounds... and providing excellent drainage so that the field can be used quickly after adverse weather.

- 1 Existing soil
- 2 Aggregate with *Mapesoil RD*
- 3 *Ultrabond Turf Tape*
- 4 *Ultrabond Turf MS*
- 5 Synthetic turf





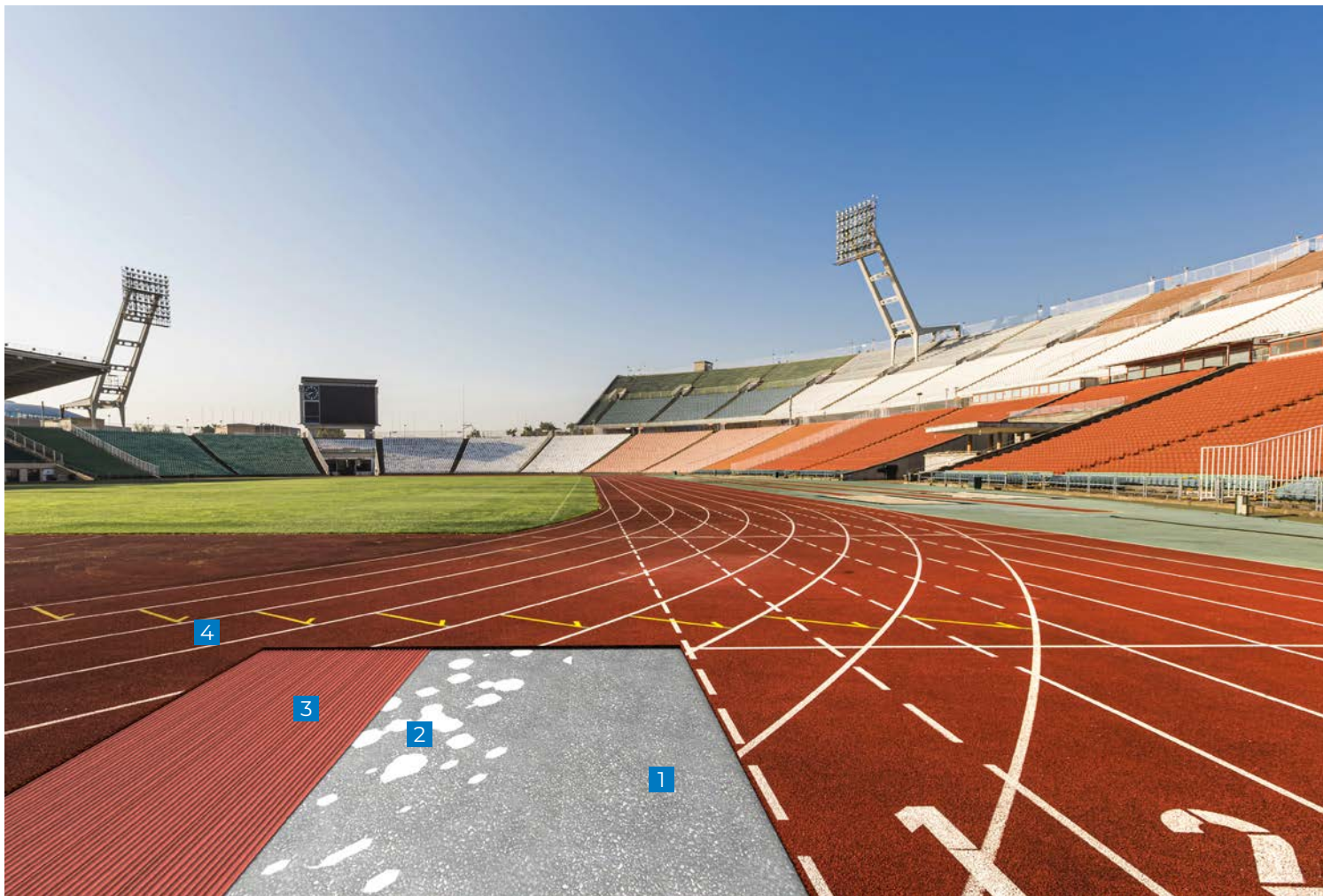
# TRACK/ RUNNING

## RUNNING TRACK

SOLUTION FOR  
ACRYLIC RESIN  
SPORTS SURFACES

In the world of track and field, imperfections in the flooring surface can create the potential for athlete injuries and take away from the beauty of the installation. *Ultrabond Track PU 2K* is specially formulated for usage with rubber running tracks and is available in many colors to match the surface of the running track.

- 1 Asphalt
- 2 *Ultrabond Track PU 2K* (for patching)
- 3 *Ultrabond Track PU 2K* (for bonding)
- 4 Rubber track



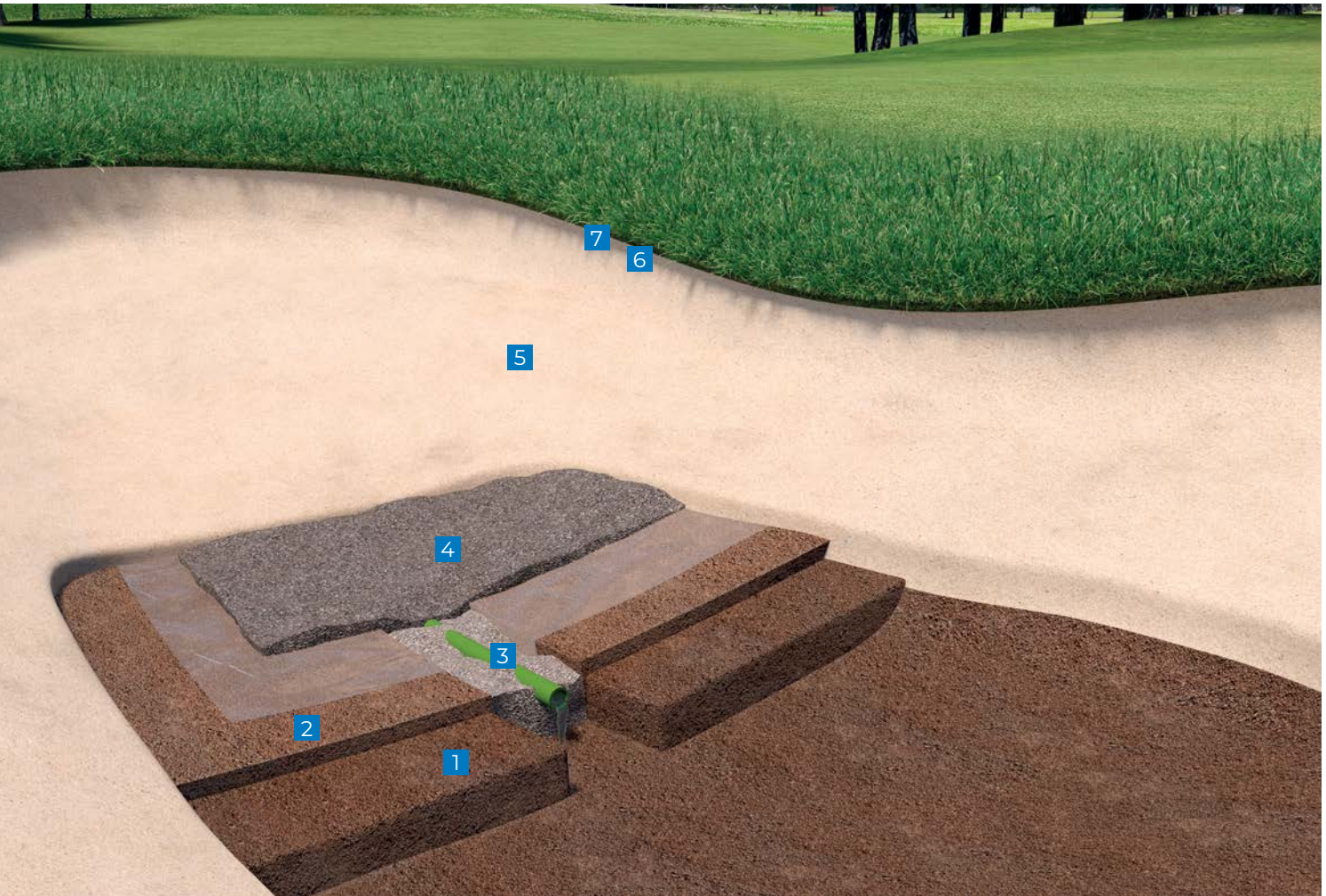
# GOLF

## GOLF COURSE

### SOIL STABILIZATION AND INSTALLATION OF SYNTHETIC GRASS

MAPEI's line of soil stabilization products are a perfect addition to the modern golf course, offering reduced maintenance, better drainage and increased playability even after rain.

- 1 Existing soil
- 2 Flow layer with non-permeable sheet
- 3 Drainage pipe
- 4 Aggregate with *Mapesoil SR*
- 5 Silica sand
- 6 *Ultrabond Turf PU 1K-HV*
- 7 Synthetic turf



When playing tennis, it is imperative to have a surface with consistent speed of play and a great appearance. *Mapecoat TNS* systems can be used to create extremely durable, comfortable and impact-reducing sports surfaces that resist telegraphing of substrate cracking.

- 1 Asphalt
- 2 *Ultrabond Turf PU 2K*
- 3 *Mapecomfort R* (7 mm)
- 4 *Ultrabond Turf PU 2K*
- 5 *Ultrabond Turf PU 2K* with *Mapenet Reinforced*
- 6 7 *Mapecoat TNS Base Coat Binder*
- 8 9 *Mapecoat TNS Finish* textured color coats
- 10 *Mapecoat TNS Line Seal*
- 11 *Mapecoat TNS Line Tex*

## TENNIS

### TENNIS COURT

SOLUTION FOR  
ACRYLIC RESIN  
SPORTS SURFACES



# PICKLEBALL

## PICKLEBALL/ TENNIS COURT

SOLUTION FOR  
ACRYLIC RESIN  
SPORTS SURFACES

With the increasingly popular game of pickleball, where ball bounce is critical, *Mapecoat TNS* systems can create a great-playing, visually appealing and durable court

- 1 Asphalt
- 2 3 *Mapecoat TNS Base Coat Binder*
- 4 5 *Mapecoat TNS Finish 3*
- 6 *Mapecoat TNS Line Seal*
- 7 *Mapecoat TNS Line Tex*



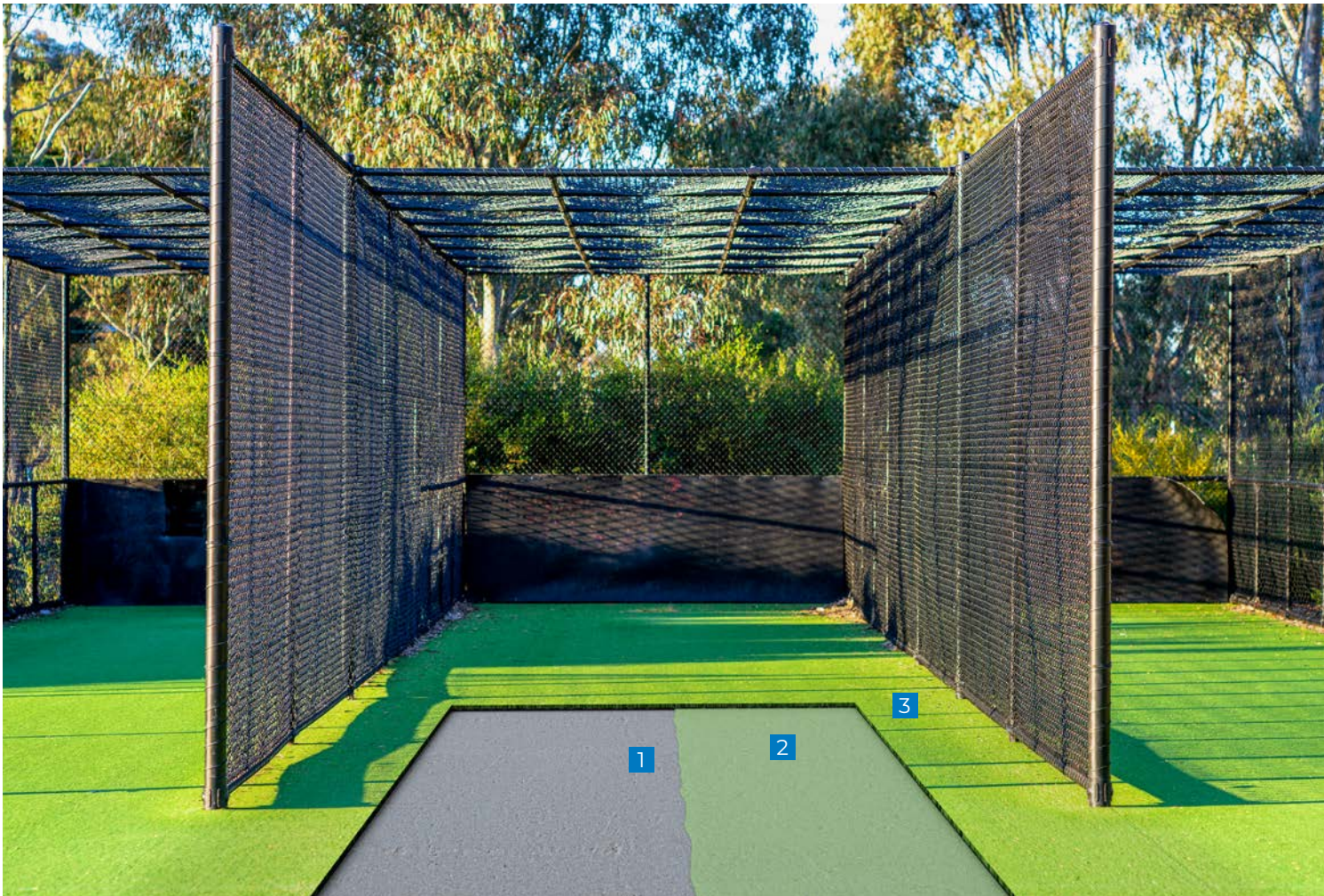
# BATTING CAGE

## BASEBALL CAGE

### INSTALLATION OF SYNTHETIC GRASS

Whether you're installing a single batting cage or an entire sports complex, MAPEI's full line of sports adhesives and complementary products offer outstanding performance and value.

- 1 Concrete
- 2 *Ultrabond Turf PU 1K-LV*
- 3 Smooth-backed synthetic turf



# OUTDOOR BASKETBALL

## EXTERIOR BASKETBALL COURT

SOLUTION FOR ACRYLIC RESIN SPORTS SURFACES

When an outstanding appearance matters, *Mapecoat TNS* can be used to create a great-looking and long-lasting outdoor basketball court.

- 1 Concrete
- 2 *Mapecoat TNS Primer EPW*
- 3 4 *Mapecoat TNS Base Coat Binder*
- 5 6 *Mapecoat TNS Binder\**
- 7 *Mapecoat TNS Line Seal*
- 8 *Mapecoat TNS Line Tex*

\*With silica sand



High-quality coatings on wooden gym floors are critical to protecting the floors and providing player safety during games. *Ultracoat Gym* products are specially formulated to offer the ultimate protective coatings to protect your investment and offer countless years of service.

- 1 Existing wooden flooring
- 2 Basecoat: *Ultracoat Universal Base* or *Ultracoat Premium Base*
- 3 Intermediate finish coat: *Ultracoat Gym* or *Ultracoat Gym Pro*
- 4 Line paint
- 5 Top finish coat: *Ultracoat Gym* or *Ultracoat Gym Pro*

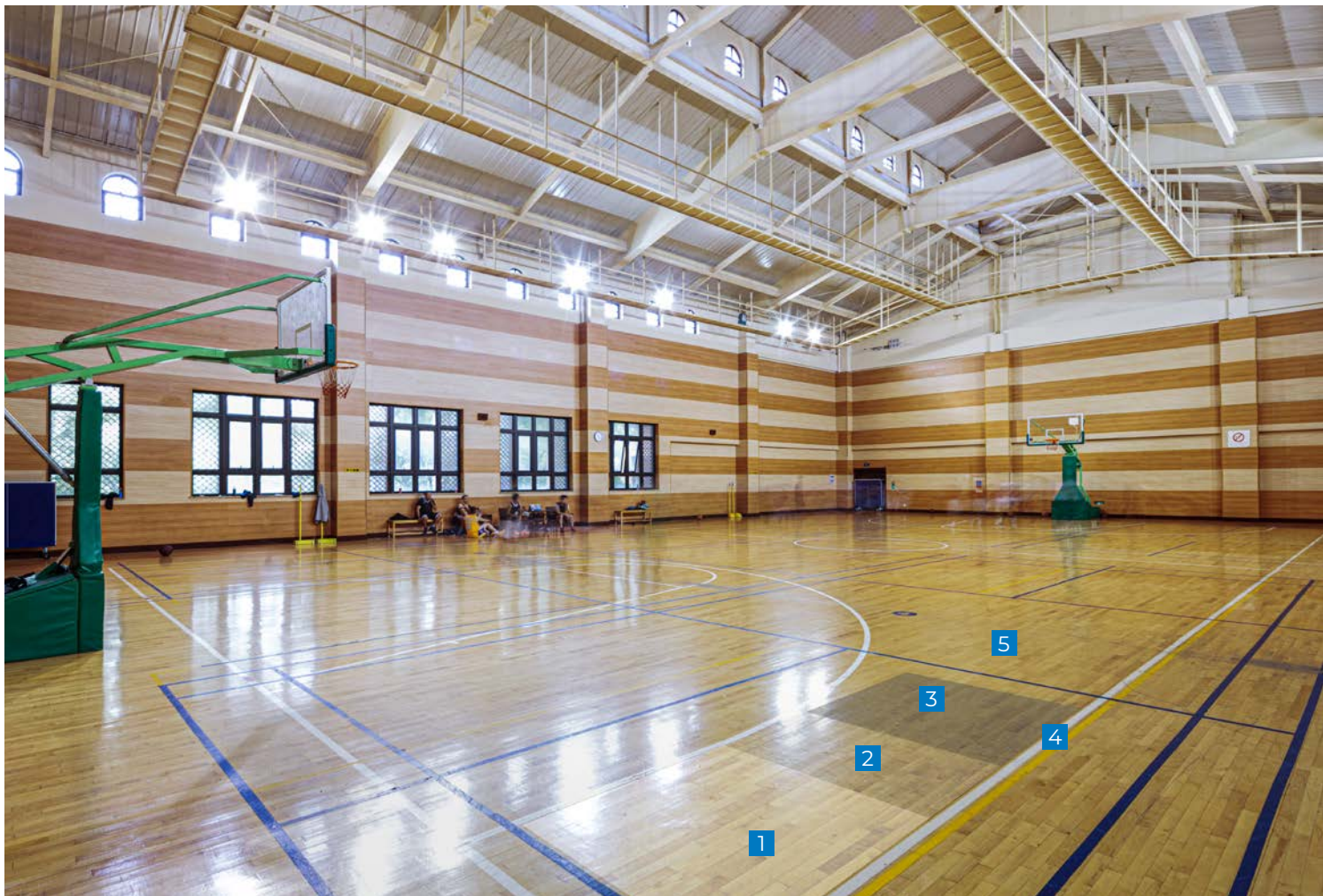
# INDOOR BASKETBALL

## GYMNASIUM

INSTALLATION OF WOODEN FLOORING

INSTALLATION OF RESILIENT FLOORING

SPORT AND URBAN FLOORING



# WEIGHT ROOM

## WEIGHT ROOM

### INTERIOR FLOORING

#### INSTALLATION OF RUBBER FLOORING

When the flooring needs to work as hard as you do, it is crucial to use MAPEI's sport-flooring urethane adhesives, which are designed to withstand the harshest impacts and keep on working great.

- 1 Concrete
- 2 *Planipatch*
- 3 *Ultrabond Sport PU 1K*
- 4 Rubber gym flooring
- 5 *Ultrabond ECO 575*
- 6 Vinyl or rubber cove base





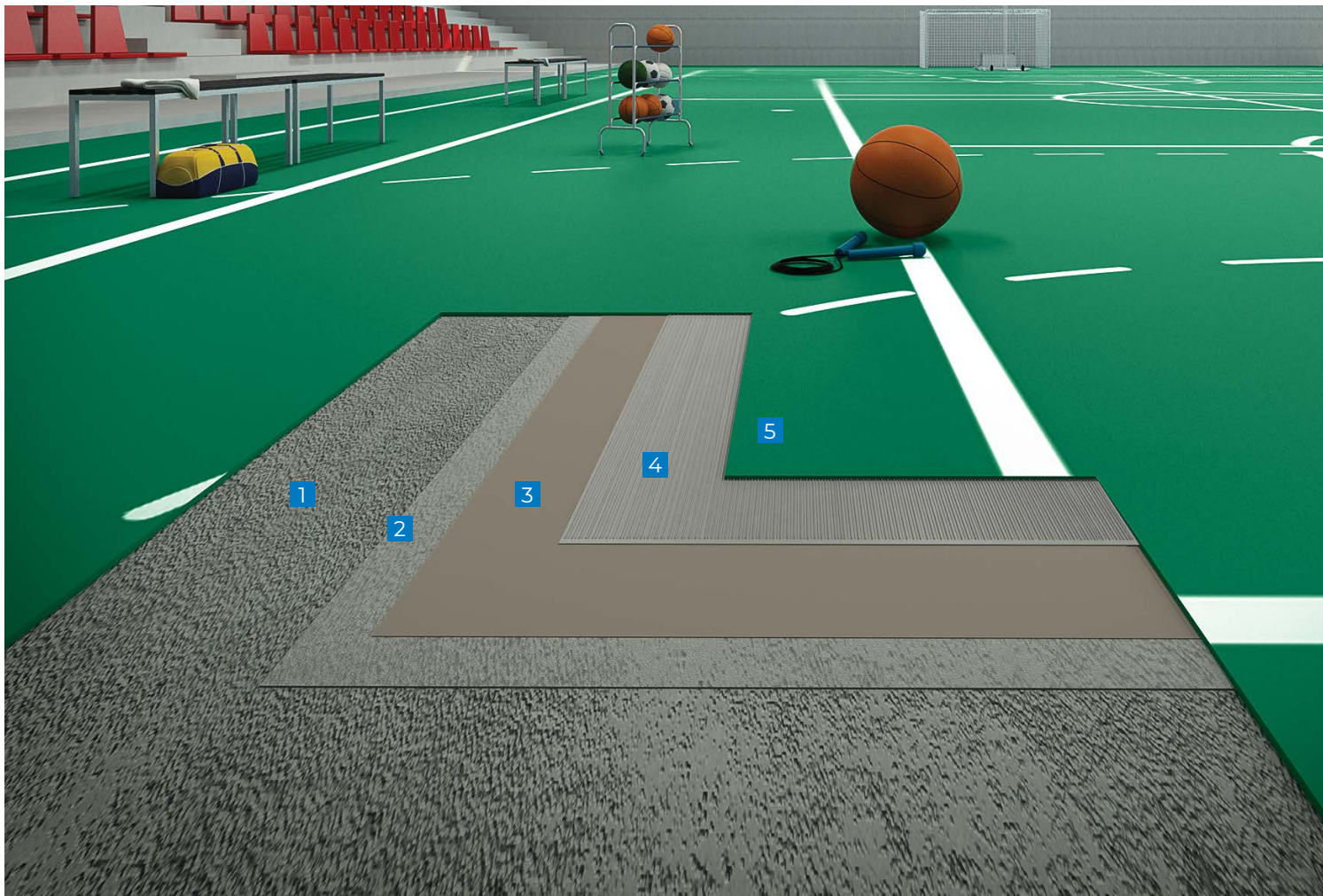
Indoor sports continue to evolve as does the flooring beneath them. MAPEI's one-stop approach to floor-preparation, repair and installation products enables the creation of top-tier multisport facilities with minimal turnaround time.

- 1 Concrete
- 2 *Primer T*
- 3 *Ultraplan M20 Plus*
- 4 *Ultrasport PU 2K*
- 5 Resilient gym flooring

# INDOOR GYMNASIUM

## INTERIOR GYMNASIUM

INTERIOR FLOORING  
INSTALLATION OF  
RUBBER FLOORING



### WARRANTY INFORMATION

MAPEI backs our products with industry-leading Best-Backed<sup>SM</sup> warranties, which stand long after the general contractor has handed over the keys to the sports court. Visit our Website at [www.mapei.com](http://www.mapei.com) or contact your MAPEI representative for warranty details.

### ABOUT MAPEI

MAPEI is the industry-leading single-source supplier for innovative products for the sports-construction market. More than 7,000 products globally (such as adhesives, sealants, mortars and admixtures) are manufactured in MAPEI's plants, which produce the world's most complete range of building products to meet the needs of more than 70,000 customers around the world.

### QUALITY CONTROL

MAPEI is an ISO 9001-2000 certified company. Its products are produced according to exacting standards, strictly adhering to process and procedural guidelines with documented compliance. This rigid production format is vigilantly followed to ensure that every product is produced uniformly from batch to batch.

### SUSTAINABILITY LEADERSHIP

MAPEI continues to be an industry leader in products that are eligible for credit under the U.S. Green Building Council's Leadership in Energy and Environmental Design (LEED), the International Living Future Institute's Living Building Challenge, the International WELL Building Institute's WELL Building Standard, and many more green building standards and certification programs.

### KNOWLEDGEABLE SALES FORCE

MAPEI offers the largest, most highly trained sales force within the industry to serve your needs for product application/installation recommendations. Its sales representatives are focused on supporting you with product knowledge, product demonstrations, product information and marketing support materials.

### TECHNICAL EXPERTISE

An in-house Technical Services Call Center responds to customers' telephone inquiries with answers to installation challenges in real time. In addition, MAPEI can offer field support for job startups, product training and on-site problem resolution.

### CUSTOMER SERVICE PLUS

MAPEI's standards for customer service are best-in-class. Our industry leadership includes such service innovations as:

- Customer-friendly, efficient processes.
- One-call resolution.
- Employee commitment to effective customer dialogue.

### INNOVATIVE RESEARCH AND DEVELOPMENT

We have always been highly committed to R&D. Our research scientists work within a global network of 32 centers, with our Corporate Research Centre in Milan acting as a central coordinating hub and as a central analysis laboratory. The United States has four centers, and Canada has one. All equipped with cutting-edge equipment, the centers collaborate continuously with universities as well as scientific and industrial research institutes. The R&D laboratories also provide support for our Technical Services division to help provide solutions for even the most complex requests from our clients. Working alongside these centers are our quality-control laboratories, which are present in all the MAPEI Group's production facilities.

For more information, contact your local MAPEI representative or visit [www.mapei.com](http://www.mapei.com).



Learn more

## **Mapecoat™ TNS Base Coat Binder**

Fast-Set, Acrylic, Basecoat Binder

*Mapecoat TNS Base Coat Binder* is a flexible, fast-set, 100%-acrylic latex compound for indoor and outdoor surfaces, used as a basecoat to prepare asphalt and pre-treated concrete surfaces before applying additional *Mapecoat TNS* products. *Mapecoat TNS Base Coat Binder* is ideal for covering small imperfections on the substrate and for promoting a strong bond. *Mapecoat TNS Base Coat Binder* is used with *Mapecoat TNS* system products to form durable and comfortable playing surfaces.

---

## **Mapecoat™ TNS Binder**

Premium Acrylic Color Coating

*Mapecoat TNS Binder* is a 100%-acrylic latex compound certified by the International Tennis Federation (ITF) for indoor and outdoor sports surfaces. *Mapecoat TNS Binder* is a flexible coating product that can be used as a colored topcoat. It is part of the *Mapecoat TNS* System, which forms durable and comfortable playing surfaces.

---

## **Mapecoat™ TNS Finish 3 [NA]**

Premium, Acrylic, Textured Top Coating Certified as ITF 3

*Mapecoat TNS Finish 3* is a flexible, acrylic topcoat certified by the International Tennis Federation (ITF). It is used on indoor and outdoor surfaces for tennis, pickleball and basketball courts as well as for multipurpose areas. *Mapecoat TNS Finish 3* is combined with *Mapecoat TNS* system products to form durable and comfortable playing surfaces.

---

## **Mapecoat™ TNS Primer EPW**

Two-Part, Water-Based, Epoxy Primer

*Mapecoat TNS Primer EPW* is a two-part, textured, epoxy primer in water dispersion for indoor and outdoor surfaces. It enhances the performance and the adhesion of *Mapecoat TNS* products.

---

## **Mapecoat™ TNS Line Seal**

Premium, Acrylic, Line Paint Sealant

*Mapecoat TNS Line Seal* is a premium, acrylic, transparent sealant for the edges of the masking tape before the application of *Mapecoat TNS Line* or *Mapecoat TNS Line Tex* line paint.

---

## **Mapecoat™ TNS Line Tex**

Premium, Acrylic Line Paint Fortified with Fine Sand

*Mapecoat TNS Line Tex* is a premium, acrylic paint fortified with fine sand for marking sport courts and urban areas for all *Mapecoat TNS* system surfaces.

---

## **Mapesoil™ 100**

High-Performance, Fiber-Reinforced, Powdered Stabilizing Agent for Sports Surface Sub-Bases

*Mapesoil 100* is a hydraulic, high-performance, fiber-reinforced, powdered stabilizing agent used to treat and consolidate soil and recycled or raw aggregates, such as naturally graded soil.

---

## **Mapesoil™ RD**

High-Performance, Hydraulic Binder for Building Drainage Sub-Bases for Sports Surfaces

*Mapesoil RD* is a high-performance, hydraulic binder used to construct sub-bases for rapid draining of sports surfaces.

---

## **Mapesoil™ SR**

Professional, Hydraulic Binder for Sub-Base Repair of Sports Surfaces

*Mapesoil SR* is a hydraulic binder used to repair sub-bases with vertical and horizontal drainage systems.

---

## **Planipatch®**

Fast-Setting, Polymer-Modified, Cement-Based Patching Compound

*Planipatch* is an ultra fast-drying, self-curing, polymer-modified, cement-based patching compound that rapidly develops high compressive strength. When *Planipatch* is mixed with *Planipatch Plus®*, the *Planipatch Plus* System can be used as an embossing leveler or as a patch to fill voids over properly prepared vinyl sheet goods, vinyl composition tile (VCT) and cement terrazzo before the direct glue-down installation of floor coverings.

---

## **Primer T™**

All-Purpose Primer for Self-Leveling Underlayments

*Primer T* is a low-VOC, magenta-colored, water-based acrylic primer that enhances the performance and adhesion of self-leveling underlayments (SLUs) on nonporous and porous substrates. Suitable for a wide variety of substrates, Primer T combines excellent versatility with easy, low-odor application.

---

## **Ultrabond ECO® 575 [NA]**

Premium Wall-Base Adhesive

*Ultrabond ECO 575* is a premium wall-base adhesive specifically designed to provide superior bond and impact resistance for rubber, vinyl and carpet wall base. *Ultrabond ECO 575* also has been reformulated to offer even greater grab and wet strength, keeping corners wrapped tight. Its light-colored, water-based, acrylic-polymer formulation won't stain even the whitest wall base.

---

## **Ultrabond® Sport PU 1K**

Fast-Setting Urethane Adhesive for Recycled-Rubber Sports Flooring

*Ultrabond Sport PU 1K* is a one-component, moisture-curing, urethane adhesive specifically designed for bonding reground-rubber flooring in interior and exterior applications. Its unique formulation is perfectly suited for reground-rubber sports flooring, providing an aggressive and durable bond. *Ultrabond Sport PU 1K* is designed to provide tack and early green strength to keep seams tight and avoid the need for weights.

---

## **Ultrabond® Track PU 2K**

Premium, Two-Part, Polyurethane Track Adhesive

*Ultrabond Track PU 2K* is a two-part, polyurethane adhesive designed for indoor and outdoor sports-flooring installations that demand high performance in various weather conditions. *Ultrabond Track PU 2K* provides excellent resistance to heat, moisture and low temperatures.

---

## **Ultrabond® Turf MS**

Premium, Hybrid, Synthetic Turf Adhesive

*Ultrabond Turf MS* is a high-tack, fast-setting, one-component, modified-silane hybrid adhesive designed for installation of high-performance synthetic sports turf. *Ultrabond Turf MS* meets FIFA requirements and is suitable for most weather conditions. *Ultrabond Turf MS* is colored green to blend in with most synthetic turf products.

---

## **Ultrabond® Turf PU 1K**

Premium, Fast-Setting, Urethane Adhesive for Turf Seams

*Ultrabond Turf PU 1K* is a fast-setting, moisture-curing, one-component, urethane adhesive specifically designed for bonding of synthetic turf in high-performance sports installations. Offering excellent weather resistance, *Ultrabond Turf PU 1K* can be used in interior and exterior applications. It meets FIFA requirements for bond strength in sports-turf applications.

---

## **Ultrabond® Turf PU 1K-HV**

High-Viscosity, Urethane Adhesive for Turf Seams

*Ultrabond Turf PU 1K-HV* is a high-viscosity, moisture-curing, one-component, urethane adhesive specifically designed for bonding of synthetic turf in high-performance sports installations. Offering excellent weather resistance, *Ultrabond Turf PU 1K-HV* can be used in interior and exterior applications. It meets FIFA requirements for bond strength in sports-turf applications.

---

## **Ultrabond® Turf PU 1K-LV**

Low-Viscosity, Fast-Setting, Urethane Adhesive for Turf Installation

*Ultrabond Turf PU 1K-LV* is a fast-setting, moisture-curing, polyurethane adhesive specifically designed for full glue-down applications with smooth-backed synthetic turf, such as for batting cages and lacrosse fields. The low-viscosity formula can be flat-troweled or sprayed via an airless pump sprayer. *Ultrabond Turf PU 1K-LV* is also suitable for repairs, curbs/edging and detail work.

---

## **Ultrabond® Turf PU 2K**

Professional, Two-Component, Fast-Set, Urethane Turf Seam Adhesive

*Ultrabond Turf PU 2K* is a high-performance, two-component, fast-set, urethane adhesive designed for the high-performance seaming and direct bonding of synthetic turf used in athletic and landscape applications. *Ultrabond Turf PU 2K* is particularly suited for use in areas of low ambient relative humidity and in cool temperatures. *Ultrabond Turf PU 2K* is colored green to blend in with most synthetic turf products and cures within 2 to 4 hours to a tough, durable bond. *Ultrabond Turf PU 2K* provides seam strengths that exceed FIFA standards.

---

---

### **Ultrabond® Turf Tape**

#### Premium Turf Seam Tape

*Ultrabond Turf Tape* is a PET-based, spun-bonded, nonwoven fabric tape designed specifically to work with MAPEI turf adhesives for seaming synthetic turf. *Ultrabond Turf Tape* is waterproof and provides superior tensile strength and tear resistance, which are vital for installations of professional athletic playing fields. It is also perfectly suited as a seaming base for other synthetic turf applications, including installations of residential landscaping, playgrounds and golf courses.

---

### **Ultracoat® Gym**

#### One-Component, Water-Based, Polyurethane, Gym Wood-Flooring Finish

*Ultracoat Gym* is a one-part, water-based formula designed to provide a high gloss finish for professional gym floors. It is a self-crosslinking, aliphatic polyurethane resin system with excellent abrasion resistance and slip resistance suitable for solid, pre-sanded, wood sports floors.

---

### **Ultracoat® Gym Pro**

#### High-Performance, Cross-Linked, Water-Based, Polyurethane, Gym Wood-Flooring Finish

*Ultracoat Gym Pro* is a two-part, aziridine cross-linked, water-based, high-performance formula designed to provide a high-gloss finish for professional, wood sports floors.

---

### **Ultracoat® Premium Base**

#### Two-Component, High-Performance Sanding Sealer

*Ultracoat Premium Base* is a two-component, high-performance, water-based sanding sealer for all types of wood flooring – including exotic species – and is specifically designed to work with Ultracoat water-based finishes in high-traffic areas. *Ultracoat Premium Base* seals freshly sanded wood flooring and creates a base layer that isolates the finish coat from penetrating into the open wood surface.

---

### **Ultracoat® Universal Base**

#### One-Component Sanding Sealer

*Ultracoat Universal Base* is a one-component, rapid-drying, water-based sanding sealer for solid, engineered and exotic wood flooring. Specifically designed to work with Ultracoat water-based finishes, *Ultracoat Universal Base* seals freshly sanded wood flooring and creates a base layer that isolates the finish coat from penetrating into the open wood surface.

---

### **Ultraplan® M20 Plus**

#### Quick-Setting, High-Compressive-Strength Underlayment

*Ultraplan M20 Plus* is a calcium-aluminate-based, quick-setting, self-leveling underlayment and topping. It is specially formulated for the resurfacing and construction of interior horizontal surfaces as a high-compressive-strength underlayment with maximum resistance to wheel tracking and indentations. *Ultraplan M20 Plus* is suitable for use as a commercial wear topping in warehouse and alternate industrial applications where an exceptional flat and smooth concrete surface is desired.

---

### **Ultrasport™ PU 2K**

#### Premium, Two-Part, Polyurethane Sports Flooring Adhesive

*Ultrasport PU 2K* is a low-VOC, two-part reactive adhesive designed for indoor sports flooring installations. This adhesive is suitable to bond all types of sports floor coverings to properly prepared metal, asphalt pavement and many other difficult-to-bond-to substrates. It is recommended for the installation of PVC-backed flooring, solid vinyl tile and planks, rubber sheet flooring, rubber tile, rubber stair treads, wood parquet floors, carpet, linoleum, mineral fibrous felt-backed sheet goods, carpet, and all types of cork flooring and underlayments.





SYSTEM SOLUTIONS GUIDE

# SPORTS FLOORING



MAPEI USA  
MAPEI Caribe  
MAPEI Canada

## MAPEI Headquarters of North America

1144 East Newport Center Drive  
Deerfield Beach, Florida 33442  
1-888-US-MAPEI (1-888-876-2734) /  
(954) 246-8888

## Technical Services

1-800-992-6273 (U.S. and Puerto Rico)  
1-800-361-9309 (Canada)

## Customer Service

1-800-42-MAPEI (1-800-426-2734)

Copyright ©2023 by MAPEI Corporation ("MAPEI") and all rights are reserved. All intellectual property rights and other information contained in this document are the exclusive property of MAPEI (or its parent or related companies), unless otherwise noted. No part of this document may be reproduced or transmitted in any form without the prior written consent of MAPEI.

Printed in the USA.

