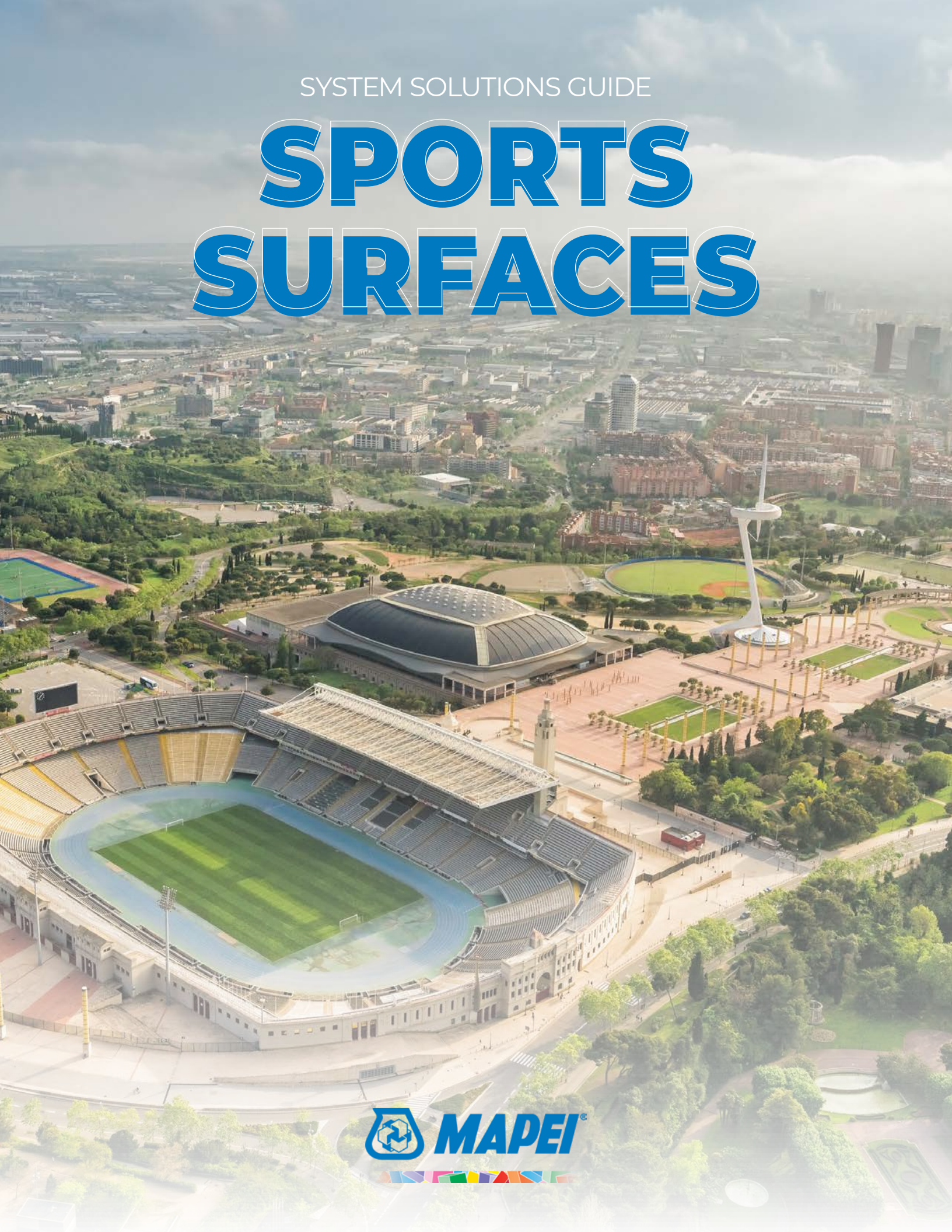


SYSTEM SOLUTIONS GUIDE

SPORTS SURFACES





INTRO	02
SOCCER	04
FOOTBALL	05
BASEBALL/SOFTBALL	06
TRACK/RUNNING	07
GOLF	08
TENNIS	09
PICKLEBALL	10
BATTING CAGE	11
OUTDOOR BASKETBALL	12
INDOOR BASKETBALL	13
WEIGHT ROOM	14
INDOOR GYMNASIUM	15
PRODUCT INDEX	17



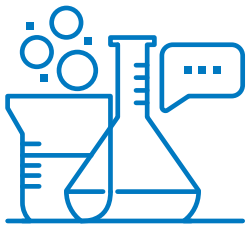
Since MAPEI's founding in 1937, there has been a passion for every facet of sports. MAPEI entered the professional sports industry in the 1976 Olympic Games in Montreal with the introduction of a novel adhesive system for the installation of running tracks. Thanks to years of continuous innovation, MAPEI's sport-flooring systems offer cutting-edge solutions to build the most aesthetically pleasing and highest-quality sports facilities.



Full-Breadth Product Lines

MAPEI has supplied residential and major commercial projects with total installation solutions for tile and stone, floor coverings and decorative concrete as well as concrete restoration and admixtures for more than 85 years.

1 Tile & Stone Installation Systems	2 <i>UltraCare</i> Stone, Tile, Grout Care and Maintenance Solutions	3 Profiles and Shower Systems	4 Profiles for Floors and Coverings	5 Skirting Boards
6 Raised Floor	7 Floor Covering Installation Systems	8 Products for Sports Surfaces	9 Products for Wood Flooring	10 Concrete Restoration Systems
11 Products for Structural Strengthening	12 Cementitious and Resin Flooring Systems	13 Waterproofing Systems	14 Admixtures for Concrete	15 Cement Additives
16 Products for the Marine Industry	17 Products for Underground Construction (UTT)			



Innovative Research & Development

Worldwide, a considerable percentage of MAPEI employees are involved in the development of new technologies and product innovations, keeping our customers at the forefront of the construction industry. The company has taken the additional initiative of focusing its R&D efforts on environmentally sustainable solutions.

To remain on the cutting edge of innovation, MAPEI reinvests revenues into researching and developing new products and technologies. This corporate priority has produced such innovations as:

- Easy Glide Technology™, which offers extreme ease of application, yielding a buttery consistency that reduces fatigue during installation.
- *Ultrabond ECO*® product formulations beginning in the 1980s with extremely low emissions of volatile organic compounds (VOCs) for improved indoor air quality.

- FastTrack Ready™ products, which reduce the required steps of an installation and/or perform more quickly than current methods.



Quality Control and Efficient Manufacturing

In North America, most MAPEI facilities have been certified to ISO 9001 quality management and ISO 14001 environmental management standards. Our products are produced according to exacting standards, strictly adhering to process and procedural

guidelines with documented compliance. This rigid production format is vigilantly followed to ensure that every product is produced uniformly from batch to batch.

Powerful, Efficient and Sustainable Manufacturing

Cutting-edge production technology is used in MAPEI's production facilities, where the entire manufacturing process is optimized by continual quality control, from raw materials to final packaging.

MAPEI's production statistics are impressive: 93 production facilities in 36 countries on five continents. Along with the 29,100 tons of finished products that are shipped from our production facilities every day, we receive just as many tons of raw materials to keep our sites supplied around the world.

MAPEI's production efforts are reflected through optimization of logistics costs, close proximity to our customers, and a guarantee of maximum efficiency of production processes while respecting the environment.

Warranty Program

To bring it all together, MAPEI complements the industry's best products with simple, easy-to-understand requirements for comprehensive warranties – allowing you to build systems within desired warranty timeframes.

MAPEI's advanced systems give you the built-in confidence provided by superior in-field technical support and the Best-BackedSM warranties in the business.

Professional Support

Knowledgeable Sales Force

MAPEI offers the largest, most highly trained sales force within the industry to serve your needs for product application/installation recommendations. Its representatives are focused on supporting you with product knowledge, product demonstrations, product information, marketing support materials and other relevant tools to help you generate business.

Technical Expertise

An in-house Technical Services Product Support Team responds to customers' telephone inquiries with answers to installation challenges in real time. In addition, Regional Technical Services Representatives provide field support, including jobsite visits, product training and advice on product selection.

Call us at 1-800-992-6273 (flooring) or 1-888-365-0614 (non-flooring).

Customer Service Plus

MAPEI's standards for customer service are best-in-class. Our leadership includes such service innovations as:

- Customer-friendly, efficient processes
- One-call resolution
- Employee commitment to effective customer dialog

Call us at 1-800-42-MAPEI (1-800-426-2734).



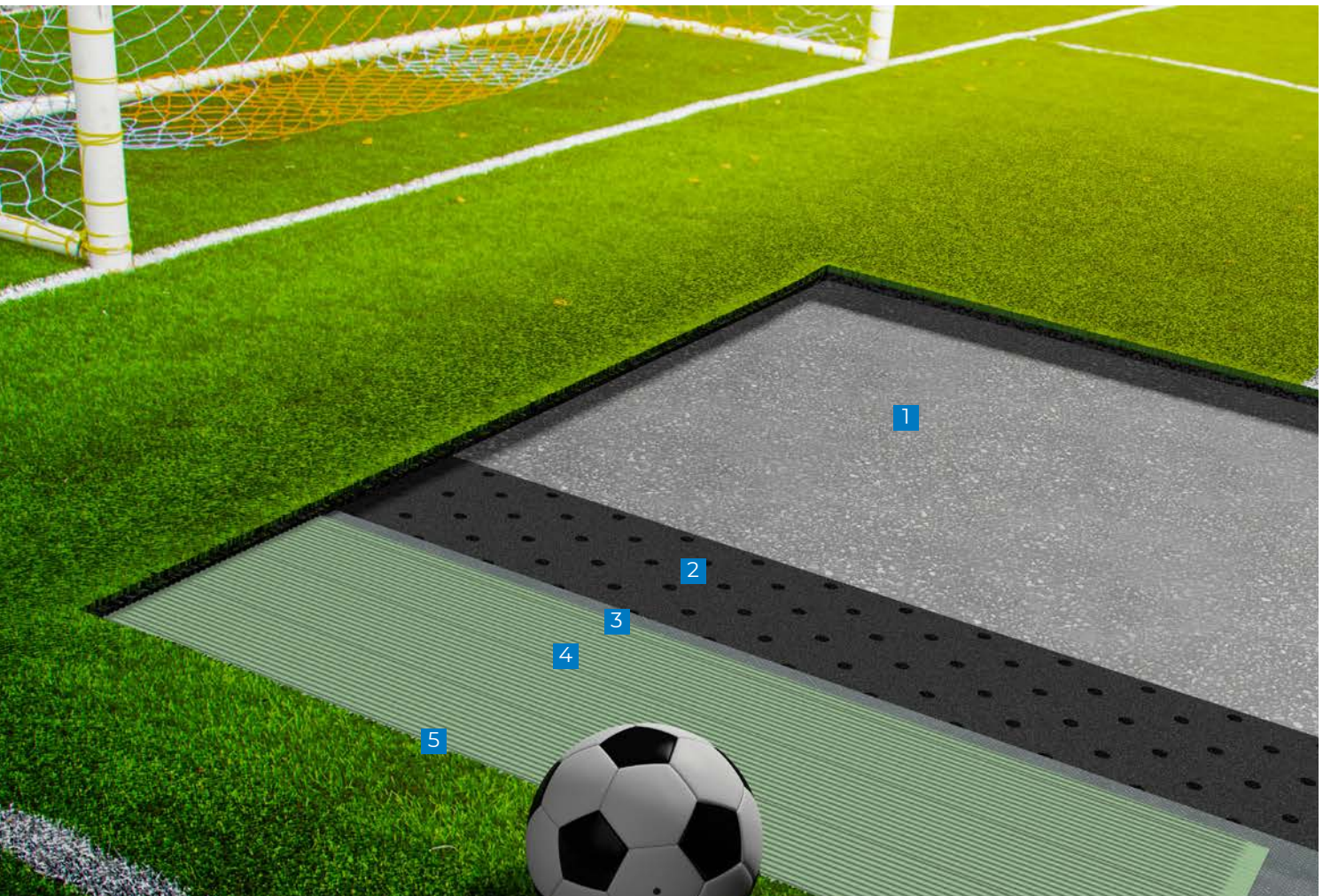
SOCCER

SOCCER FIELD

INSTALLATION OF SYNTHETIC GRASS

MAPEI offers solutions for many sports including soccer, with adhesive and seam tape systems that exceed FIFA's bond-strength requirements to ensure long-lasting and quality installations.

- 1 Drainage stone
- 2 Shock pad
- 3 *Ultrabond Turf Tape*
- 4 *Ultrabond Turf PU 1K*
- 5 Synthetic turf



FOOTBALL

FOOTBALL FIELD

INSTALLATION OF SYNTHETIC GRASS

When it comes to the incredible stresses on a synthetic-turf football field during training and games, it is critical to ensure that the sub-base and seam strength are up to the task. *Mapesoil* products offer a great solution to create a strong sub-base that will last for the lifetime of the field.

- 1 Existing soil
- 2 Existing soil with *Mapesoil 100*
- 3 *Ultrabond Turf Tape*
- 4 *Ultrabond Turf PU 2K*
- 5 Synthetic turf



BASEBALL/ SOFTBALL

BASEBALL FIELD

INSTALLATION OF SYNTHETIC GRASS

With the complexity of a synthetic-turf installation on a baseball or softball field, it is critical to use an adhesive and sub-base combination that will ensure the proper laying of the turf over raised pitching mounds... and providing excellent drainage so that the field can be used quickly after adverse weather.

- 1 Existing soil
- 2 Aggregate with *Mapesoil SR*
- 3 *Ultrabond Turf Tape*
- 4 *Ultrabond Turf HMA*
- 5 Synthetic turf



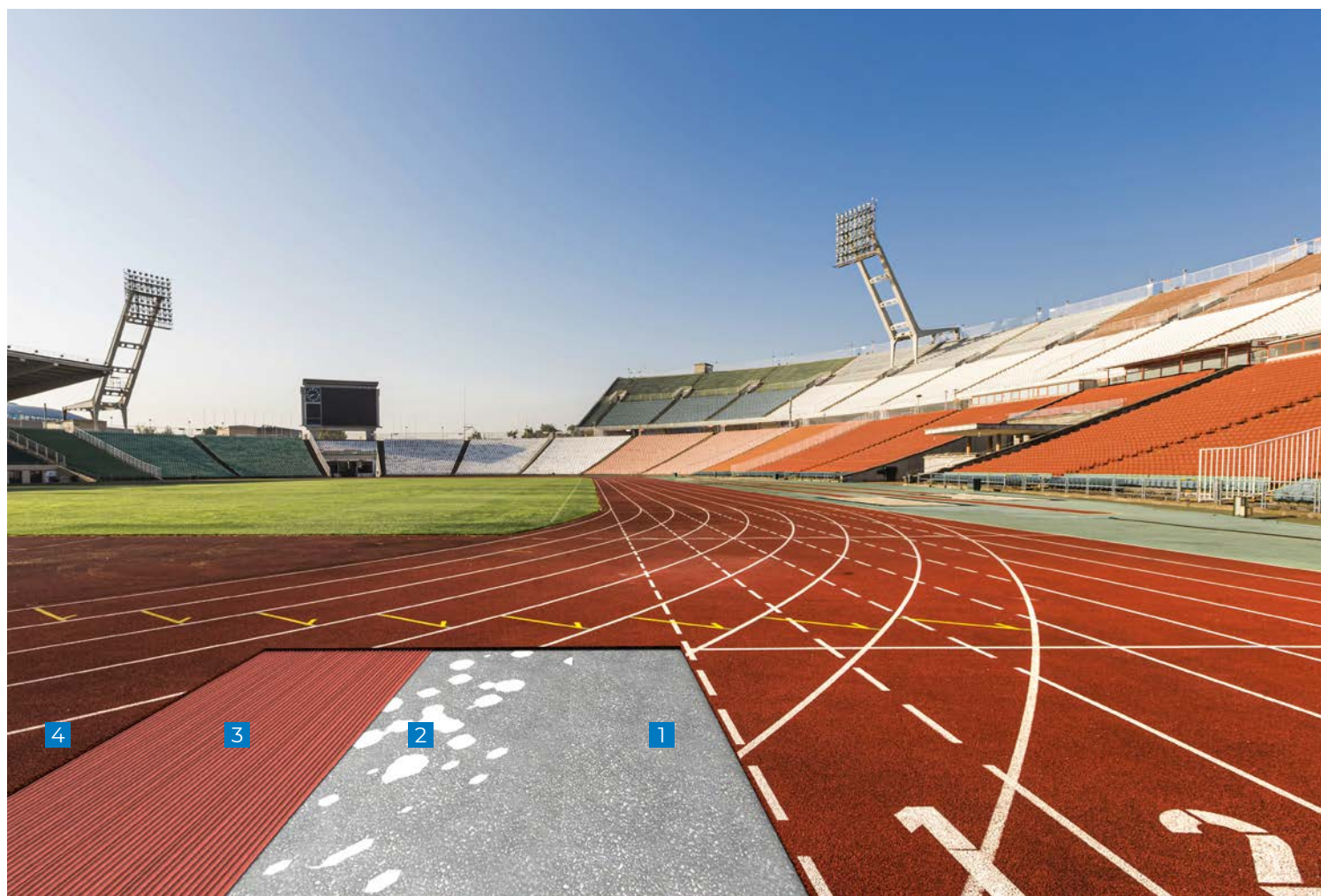
TRACK/ RUNNING

RUNNING TRACK

SOLUTION FOR
ACRYLIC RESIN
SPORTS SURFACES

In the world of track and field, imperfections in the flooring surface can create the potential for athlete injuries and take away from the beauty of the installation. *Ultrabond Track PU 2K* is specially formulated for usage with rubber running tracks and is available in many colors to match the surface of the running track.

- 1 Asphalt
- 2 *Ultrabond Track PU 2K* (for patching)
- 3 *Ultrabond Track PU 2K* (for bonding)
- 4 Rubber track



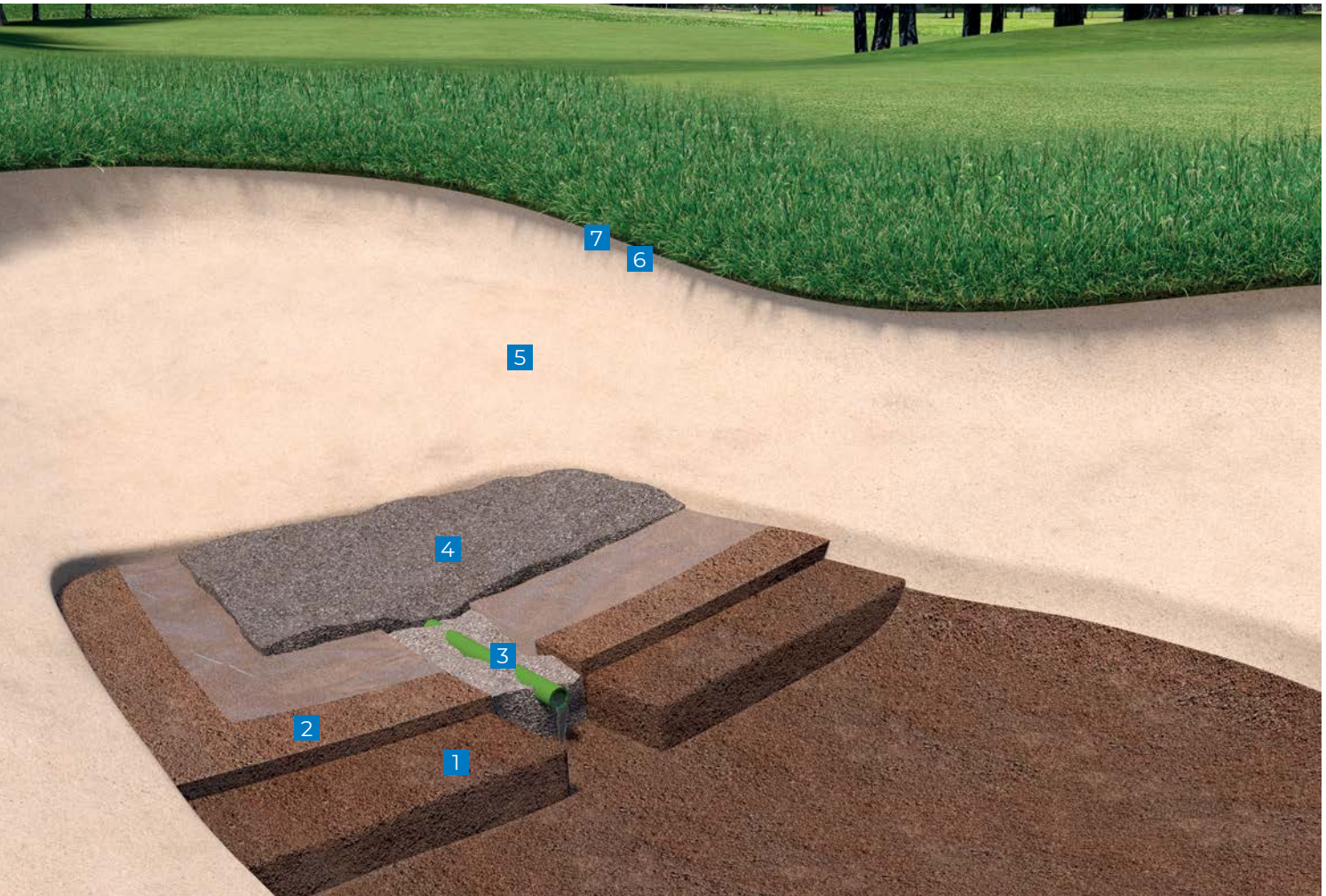
GOLF

GOLF COURSE

SOIL STABILIZATION AND INSTALLATION OF SYNTHETIC GRASS

MAPEI's line of soil stabilization products is a perfect addition to the modern golf course, offering reduced maintenance, better drainage and increased playability even after rain.

- 1 Existing soil
- 2 Flow layer with non-permeable sheet
- 3 Drainage pipe
- 4 Aggregate with *Mapesoil SR*
- 5 Silica sand
- 6 *Ultrabond Turf PU 1K-HV*
- 7 Synthetic turf



When playing tennis, it is imperative to have a surface with consistent speed of play and a great appearance. *Mapecoat TNS* systems can be used to create extremely durable, comfortable and impact-reducing sports surfaces that resist telegraphing of substrate cracking.

- 1 Asphalt
- 2 *Mapecoat TNS PU 3-in-1*
- 3 *Mapecomfort R* (7 mm)
- 4 *Mapecoat TNS PU 3-in-1*
- 5 *Mapecoat TNS PU 3-in-1* with *Mapenet Reinforced*
- 6/7 *Mapecoat TNS Base Coat Binder*
- 8/9 *Mapecoat TNS Finish* textured color coats
- 10 *Mapecoat TNS Line Seal*
- 11 *Mapecoat TNS Line Tex*

TENNIS

TENNIS COURT

SOLUTION FOR
ACRYLIC RESIN
SPORTS SURFACES



PICKLEBALL

PICKLEBALL/ TENNIS COURT

SOLUTION FOR
ACRYLIC RESIN
SPORTS SURFACES

With the increasingly popular game of pickleball, where ball bounce is critical, *Mapecoat TNS* systems can create a great-playing, visually appealing and durable court.

- 1 Asphalt
- 2/3 *Mapecoat TNS Base Coat Binder*
- 4/5 *Mapecoat TNS Finish 3*
- 6 *Mapecoat TNS Line Seal*
- 7 *Mapecoat TNS Line Tex*



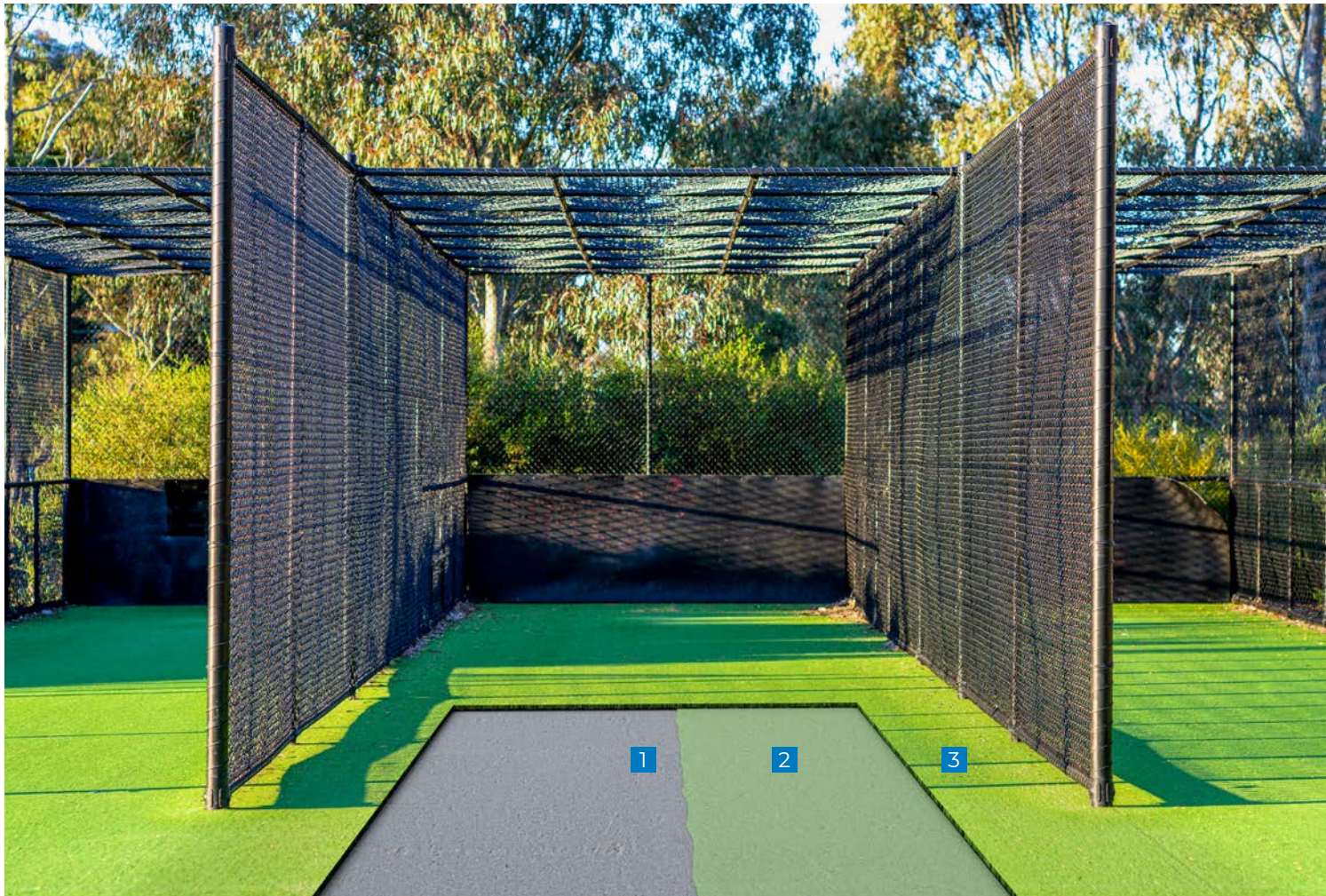
BATTING CAGE

BASEBALL CAGE

INSTALLATION OF SYNTHETIC GRASS

Whether you're installing a single batting cage or an entire sports complex, MAPEI's full line of sports adhesives and complementary products offers outstanding performance and value.

- 1 Concrete
- 2 *Ultrabond Turf PU 1K-LV*
- 3 Smooth-backed synthetic turf



OUTDOOR BASKETBALL

EXTERIOR BASKETBALL COURT

SOLUTION FOR ACRYLIC RESIN SPORTS SURFACES

When an outstanding appearance matters, *Mapecoat TNS* can be used to create a great-playing and long-lasting outdoor basketball court.

- 1 Concrete
- 2 *Mapecoat TNS Primer EPW*
- 3/4 *Mapecoat TNS Base Coat Binder*
- 5/6 *Mapecoat TNS Binder**
- 7 *Mapecoat TNS Line Seal*
- 8 *Mapecoat TNS Line Tex*

* With silica sand



INDOOR BASKETBALL

GYMNASIUM

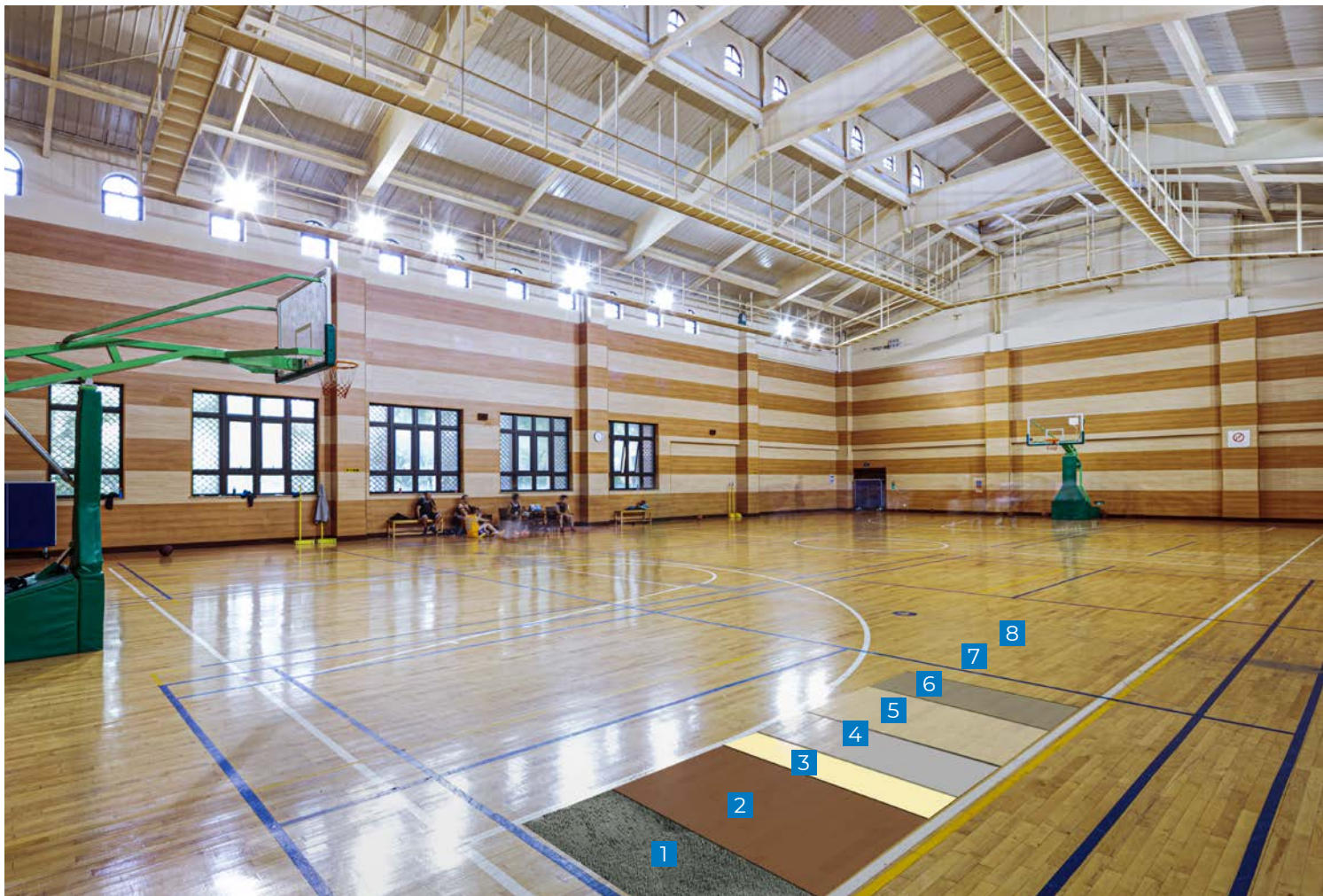
INSTALLATION OF WOOD FLOORING

INSTALLATION OF RESILIENT FLOORING

SPORT AND URBAN FLOORING

MAPEI offers the total package with *MAPEI Gym Prep* substrate-preparation products to mitigate potential moisture issues and ensure a flat and level surface for wood floors. Once the floor is installed, MAPEI's high-quality *Ultracoat* products provide critical protection of the floor and ensure player safety during games.

- 1 Concrete
- 2 *MAPEI Gym Prep Sealer*
- 3 *MAPEI Gym Prep Primer*
- 4 *MAPEI Gym Prep Leveler*
- 5 Wood flooring
- 6 Basecoat: *Ultracoat Universal Base* or *Ultracoat Premium Base*
- 7 Line Paint
- 8 Finish coat: *Ultracoat Gym* or *Ultracoat Gym Pro* with *Ultracoat Gym Cross-Linker*



WEIGHT ROOM

WEIGHT ROOM

INTERIOR FLOORING

INSTALLATION OF
RUBBER FLOORING

When the flooring needs to work as hard as you do, it is crucial to use MAPEI's sport-flooring urethane adhesives, which are designed to withstand the harshest impacts and keep on working great.

- 1 Concrete
- 2 *Planipatch*
- 3 *Ultrabond Sport PU 1K*
- 4 Rubber gym flooring
- 5 *Ultrabond ECO 575*
- 6 Vinyl or rubber cove base



Indoor sports continue to evolve as does the flooring beneath them. MAPEI's one-stop approach to floor-preparation, repair and installation products enables the creation of top-tier multisport facilities with minimal turnaround time.

- 1 Concrete
- 2 *MAPEI Gym Prep Sealer*
- 3 *MAPEI Gym Prep Primer*
- 4 *MAPEI Gym Prep Leveler*
- 5 *Ultrasport PU 2K*
- 6 Resilient gym flooring

INDOOR MULTISPORT

INTERIOR MULTISPORT

INTERIOR FLOORING

INSTALLATION OF
RUBBER FLOORING



WARRANTY INFORMATION

MAPEI backs our products with industry-leading Best-Backed warranties, which stand long after the general contractor has handed over the keys to the sports court. Visit our Website at www.mapei.com or contact your MAPEI representative for warranty details.

ABOUT MAPEI

MAPEI is the industry-leading single-source supplier for innovative products for the sports-construction market. More than 7,700 products globally (such as adhesives, sealants, mortars and admixtures) are manufactured in MAPEI's plants, which produce the world's most complete range of building products to meet the needs of more than 75,000 customers around the world.

SUSTAINABILITY LEADERSHIP

MAPEI continues to be an industry leader in products that are eligible for credit under the U.S. Green Building Council's Leadership in Energy and Environmental Design (LEED), the International Living Future Institute's Living Building Challenge, the International WELL Building Institute's WELL Building Standard, and many more green building standards and certification programs.

INNOVATIVE RESEARCH AND DEVELOPMENT

We have always been highly committed to R&D. Our research scientists work within a global network of 31 centers, with our Corporate Research Centre in Milan acting as a central coordinating hub and as a central analysis laboratory. All equipped with cutting-edge equipment, the centers collaborate continuously with universities as well as scientific and industrial research institutes. The R&D laboratories also provide support for our Technical Services division to help provide solutions for even the most complex requests from our clients. Working alongside these centers are our quality-control laboratories, which are present in all the MAPEI Group's production facilities.

For more information, contact your local MAPEI representative or visit www.mapei.com.



Learn more

Mapecoat™ TNS Base Coat Binder

Fast-Set, Acrylic, Basecoat Binder

Mapecoat TNS Base Coat Binder is a flexible, fast-set, 100%-acrylic latex compound for indoor and outdoor surfaces, used as a basecoat to prepare asphalt and pre-treated concrete surfaces before applying additional *Mapecoat TNS* products. *Mapecoat TNS Base Coat Binder* is ideal for covering small imperfections on the substrate and for promoting a strong bond. *Mapecoat TNS Base Coat Binder* is used with *Mapecoat TNS* system products to form durable and comfortable playing surfaces.

Mapecoat™ TNS Binder

Premium Acrylic Color Coating

Mapecoat TNS Binder is an acrylic latex compound that can be mixed with various sands to meet a variety of International Tennis Federation (ITF) pace ratings on indoor and outdoor sports surfaces. *Mapecoat TNS Binder* is a flexible coating product that can be used as a colored topcoat. It is part of the *Mapecoat TNS System*, which forms durable and comfortable playing surfaces.

Mapecoat™ TNS Finish 3 [NA]

Premium, Acrylic, Textured Top Coating Certified as ITF 3

Mapecoat TNS Finish 3 is a flexible, acrylic topcoat certified by the International Tennis Federation (ITF). It is used on indoor and outdoor surfaces for tennis, pickleball and basketball courts as well as for multipurpose areas. *Mapecoat TNS Finish 3* is combined with *Mapecoat TNS* system products to form durable and comfortable playing surfaces.

Mapecoat™ TNS Primer EPW

Two-Part, Water-Based, Epoxy Primer

Mapecoat TNS Primer EPW is a two-part, textured, epoxy primer in water dispersion for indoor and outdoor surfaces. It enhances the performance and the adhesion of *Mapecoat TNS* products.

Mapecoat™ TNS Line Seal

Premium, Acrylic, Line Paint Sealant

Mapecoat TNS Line Seal is a premium, acrylic, transparent sealant for the edges of the masking tape before the application of *Mapecoat TNS Line* or *Mapecoat TNS Line Tex* line paint.

Mapecoat™ TNS Line Tex

Premium, Acrylic Line Paint Fortified with Fine Sand

Mapecoat TNS Line Tex is a premium, acrylic paint fortified with fine sand for marking sport courts and urban areas for all *Mapecoat TNS* system surfaces.

Mapecoat™ TNS PU 3-in-1

Versatile, Two-Component, Urethane Patch, Adhesive and Sealant

Mapecoat TNS PU 3-in-1 is a versatile, high-performance, two-component, fast-set urethane. It is designed to be combined with sand to form a durable patch for depressions and cracks on asphalt and concrete sport surfaces before installation of *Mapecoat TNS* systems. *Mapecoat TNS PU 3-in-1* is also a high-performance adhesive and waterproofing sealer for the *Mapecoat TNS Comfort* and *Comfort Elite* athletic-court surfacing systems.

MAPEI Gym Prep Leveler

High-Performance, Self-Leveling Underlayment

MAPEI Gym Prep Leveler is an innovative, hydraulic-cement-based, self-leveling underlayment designed for the installation of high-performance sports flooring. Its rapid cure and high compressive strength allow for the fast-track installation approach needed for high-performance sports facilities.

MAPEI Gym Prep Primer

Fast-Drying, Textured Primer for Sports Substrates

MAPEI Gym Prep Primer is a low-VOC, high-performance, water-based primer. It is designed to boost the performance of self-leveling underlayments over *MAPEI Gym Prep Sealer* and other nonporous substrates.

MAPEI Gym Prep Sealer

Epoxy Moisture-Reduction Barrier

MAPEI Gym Prep Sealer is a two-component, 100%-solids, epoxy coating that is designed to mitigate moisture-related problems in concrete before the installation of moisture-sensitive sports flooring. *MAPEI Gym Prep Sealer* allows for a fast-track installation approach while eliminating moisture concerns even on green (young) concrete.

Mapesoil™ 100

High-Performance, Fiber-Reinforced, Powdered Stabilizing Agent for Sports Surface Sub-Bases

Mapesoil 100 is a hydraulic, high-performance, fiber-reinforced, powdered stabilizing agent used to treat and consolidate soil and recycled or raw aggregates, such as naturally graded soil.

Mapesoil™ SR

Professional, Hydraulic Binder for Sub-Base Repair of Sports Surfaces

Mapesoil SR is a hydraulic binder used to repair sub-bases with vertical and horizontal drainage systems.

Planipatch®

Fast-Setting, Polymer-Modified, Cement-Based Patching Compound

Planipatch is an ultra fast-drying, self-curing, polymer-modified, cement-based patching compound that rapidly develops high compressive strength. When *Planipatch* is mixed with *Planipatch Plus®*, the *Planipatch Plus System* can be used as an embossing leveler or as a patch to fill voids over properly prepared vinyl sheet goods, vinyl composition tile (VCT) and cement terrazzo before the direct glue-down installation of floor coverings.

Ultrabond ECO® 575 [NA]

Premium Wall-Base Adhesive

Ultrabond ECO 575 is a premium wall-base adhesive specifically designed to provide superior bond and impact resistance for rubber, vinyl and carpet wall base. *Ultrabond ECO 575* also has been reformulated to offer even greater grab and wet strength, keeping corners wrapped tight. Its light-colored, water-based, acrylic-polymer formulation won't stain even the whitest wall base.

Ultrabond® Sport PU 1K

Fast-Setting Urethane Adhesive for Recycled-Rubber Sports Flooring

Ultrabond Sport PU 1K is a one-component, moisture-curing, urethane adhesive specifically designed for bonding reground-rubber flooring in interior and exterior applications. Its unique formulation is perfectly suited for reground-rubber sports flooring, providing an aggressive and durable bond. *Ultrabond Sport PU 1K* is designed to provide tack and early green strength to keep seams tight and avoid the need for weights.

Ultrabond® Track PU 2K

Premium, Two-Part, Polyurethane Track Adhesive

Ultrabond Track PU 2K is a two-part, polyurethane adhesive designed for indoor and outdoor sports-flooring installations that demand high performance in various weather conditions. *Ultrabond Track PU 2K* provides excellent resistance to heat, moisture and low temperatures.

Ultrabond® Turf HMA

Hot-Melt Adhesive for Synthetic Turf

Ultrabond Turf HMA is a hot-melt adhesive specifically formulated for the installation of synthetic turf using industrial hot-melt applicator machines. *Ultrabond Turf HMA* offers a permanent, fast and efficient method for seaming, inlay and quick repairs of synthetic turf installation in a variety of weather conditions.

Ultrabond® Turf PU 1K

Premium, Fast-Setting, Urethane Adhesive for Turf Seams

Ultrabond Turf PU 1K is a fast-setting, moisture-curing, one-component, urethane adhesive specifically designed for bonding of synthetic turf in high-performance sports installations. Offering excellent weather resistance, *Ultrabond Turf PU 1K* can be used in interior and exterior applications. It meets FIFA requirements for bond strength in sports-turf applications.

Ultrabond® Turf PU 1K-HV

High-Viscosity, Urethane Adhesive for Turf Seams

Ultrabond Turf PU 1K-HV is a high-viscosity, moisture-curing, one-component, urethane adhesive specifically designed for bonding of synthetic turf in high-performance sports installations. Offering excellent weather resistance, *Ultrabond Turf PU 1K-HV* can be used in interior and exterior applications. It meets FIFA requirements for bond strength in sports-turf applications.

Ultrabond® Turf PU 1K-LV

Low-Viscosity, Fast-Setting, Urethane Adhesive for Turf Installation

Ultrabond Turf PU 1K-LV is a fast-setting, moisture-curing, polyurethane adhesive specifically designed for full glue-down applications with smooth-backed synthetic turf, such as for batting cages and lacrosse fields. The low-viscosity formula can be flat-troweled or sprayed via an airless pump sprayer. *Ultrabond Turf PU 1K-LV* is also suitable for repairs, curbs/edging and detail work.

Ultrabond® Turf PU 2K

Professional, Two-Component, Fast-Set, Urethane Turf Seam Adhesive

Ultrabond Turf PU 2K is a high-performance, two-component, fast-set, urethane adhesive designed for the high-performance seaming and direct bonding of synthetic turf used in athletic and landscape applications. *Ultrabond Turf PU 2K* is particularly suited for use in areas of low ambient relative humidity and in cool temperatures. *Ultrabond Turf PU 2K* is colored green to blend in with most synthetic turf products and cures within 2 to 4 hours to a tough, durable bond. *Ultrabond Turf PU 2K* provides seam strengths that exceed FIFA standards.

Ultrabond® Turf Tape

Premium Turf Seam Tape

Ultrabond Turf Tape is a PET-based, spun-bonded, nonwoven fabric tape designed specifically to work with MAPEI turf adhesives for seaming synthetic turf.

Ultrabond Turf Tape is waterproof and provides superior tensile strength and tear resistance, which are vital for installations of professional athletic playing fields. It is also perfectly suited as a seaming base for other synthetic turf applications, including installations of residential landscaping, playgrounds and golf courses.

Ultracoat® Gym

One-Component, Water-Based, Polyurethane, Gym Wood-Flooring Finish

Ultracoat Gym is a one-part, water-based formula designed to provide a high gloss finish for professional gym floors. It is a self-crosslinking, aliphatic polyurethane resin system with excellent abrasion resistance and slip resistance suitable for solid, pre-sanded, wood sports floors. *Ultracoat Gym* can also be combined with *Ultracoat Gym Cross-Linker* for an even more durable finish.

Ultracoat® Gym Cross-Linker

Aziridine Cross-Linker for *Ultracoat Gym* Products

Ultracoat Gym Cross-Linker is an aziridine cross-linker to be used as a Part B with *Ultracoat Gym* finish products to improve performance and ensure exceptional wear resistance.

Ultracoat® Gym Pro

High-Performance, Cross-Linked, Water-Based, Polyurethane, Gym Wood-Flooring Finish

Ultracoat Gym Pro is a low-VOC, water-based, high-performance formula designed to provide a high-gloss finish for professional, wood sports floors. When combined with *Ultracoat Gym Cross-Linker*, it becomes a two-part, aziridine cross-linked finish with exceptional wear resistance.

Ultracoat® Premium Base

Two-Component, High-Performance Sanding Sealer

Ultracoat Premium Base is a two-component, high-performance, water-based sanding sealer for all types of wood flooring – including exotic species – and is specifically designed to work with *Ultracoat* water-based finishes in high-traffic areas. *Ultracoat Premium Base* seals freshly sanded wood flooring and creates a base layer that isolates the finish coat from penetrating into the open wood surface. *Ultracoat Premium Base* is custom-formulated to enable a single-coat application for most wood types.

Ultracoat® Universal Base

One-Component Sanding Sealer

Ultracoat Universal Base is a one-component, rapid-drying, water-based sanding sealer for solid, engineered and exotic wood flooring. Specifically designed to work

with *Ultracoat* water-based finishes, *Ultracoat Universal Base* seals freshly sanded wood flooring and creates a base layer that isolates the finish coat from penetrating into the open wood surface.

Ultrasport™ PU 2K

Premium, Two-Part, Polyurethane Sports-Flooring Adhesive

Ultrasport PU 2K is a low-VOC, two-part reactive adhesive designed for indoor sports-flooring installations. This adhesive is suitable to bond all types of sports floor coverings to properly prepared metal, asphalt pavement and many other difficult-to-bond-to substrates. It is recommended for the installation of PVC-backed flooring, solid vinyl tile and planks, rubber sheet flooring, rubber tile, rubber stair treads, wood parquet floors, carpet, linoleum, mineral fibrous felt-backed sheet goods, carpet, and all types of cork flooring and underlayments.





**MAPEI Headquarters
of North America**

1144 East Newport Center Drive
Deerfield Beach, Florida 33442
1-888-US-MAPEI (1-888-876-2734) /
(954) 246-8888

Technical Services

U.S. and Puerto Rico:

Flooring: 1-800-992-6273

Concrete and heavy construction:
1-888-365-0614

Customer Service

1-800-42-MAPEI (1-800-426-2734)

Copyright ©2024 by MAPEI Corporation ("MAPEI") and all rights are reserved. All intellectual property rights and other information contained in this document are the exclusive property of MAPEI (or its parent or related companies), unless otherwise noted. No part of this document may be reproduced or transmitted in any form without the prior written consent of MAPEI.

Printed in the USA.



MAPEI USA