



Concrete Repair Mortars Solutions

Horizontal • Form-and-Pour •
Vertical and Overhead • Rapid





Concrete repair mortars are essential to keeping America's infrastructure in working order. Whether the mortars resurface the cracked and pitted lanes of a Midwestern highway, or smooth the roadbed of a sun-baked Western bridge deck, or help strengthen hurricane-damaged buildings in the South, or cover exposed rebar during renovation work on the East Coast — the uses are as wide and as varied as the repairs themselves. MAPEI's concrete repair mortars fill this need efficiently and effectively, offering options for vertical and overhead repairs, as well as additives to speed up or slow down the applications.

Horizontal repair mortars

Whether the repair is a quick surface touch-up or the fill of a deeper void, MAPEI's horizontal repair mortars offer a variety of one- and two-component products designed to resurface and strengthen concrete surfaces.



Topcem™ Pronto

Extended-Working-Time Screed Mortar

Topcem Pronto is a single-component, extended-working-time screedable mortar.



	Product Code	Packaging
U.S.	0243325	Bag: 55 lbs. (24.9 kg)



Topcem™ Premix

Accelerated-Cure Screed

Topcem Premix is an accelerated-cure screed mortar suitable for bonded as well as unbonded applications. *Topcem Premix* can easily be screeded or sloped, and has the workability and working time of conventional screed mortars.



	Product Code	Packaging
U.S.	0240523	Bag: 50 lbs. (22.7 kg)



Mapecem® 102

Medium-Build, One-Component, Fast-Setting Mortar

Mapecem 102 is a one-component, shrinkage-compensated, polymer-modified, fast-setting cementitious mortar with a corrosion inhibitor and silica fume. *Mapecem 102* is intended for the renovation and topping of horizontal concrete surfaces.



	Product Code	Packaging
U.S.	1182225	Bag: 55 lbs. (24.9 kg)

Horizontal repair mortars



Mapecem® 202

Medium-Build, Two-Component, Fast-Setting Mortar

Mapecem 202 is a two-component, shrinkage-compensated, polymer-modified, fast-setting cementitious mortar with a corrosion inhibitor.



	Product Code	Packaging
U.S.	1182328 1182428	Part A, Bag: 55 lbs. (24.9 kg) Part B, Jug: 0.71 U.S. gal. (2.69 L)



Planitop® EL

Self-Leveling, Portland-Cement-Based Underlayment and Topping

Planitop EL is a self-leveling, Portland-cement-based underlayment and topping that can be used as a wear surface on interior and elevated exterior areas where worn concrete is an issue. Because Planitop EL provides a nonuniform and nonhomogeneous finish, it is not recommended for use as a decorative topping.



	Product Code	Packaging
U.S.	2759923	Bag: 50 lbs. (22.7 kg)



Planitop® 25

Two-Component Resurfacing Mortar

Planitop 25 is a two-component, shrinkage-compensated, cementitious, flowable resurfacing mortar with a corrosion inhibitor.



	Product Code	Packaging
U.S.	2758330 2758504	Part A, Bag: 57.1 lbs. (25.9 kg) Part B, Jug: 1.05 U.S. gals. (3.97 L)

Form-and-pour mortars

Pumpable or pourable, these mortars are designed for a wide scope of repairs, including bridge decks, dredging projects and large-scale commercial construction.



Planitop® FD

Full-Depth Repair Mortar

Planitop FD is a one-part, shrinkage-compensated, cementitious, flowable mortar for a variety of repairs. *Planitop FD* contains a corrosion inhibitor and is suited for form-and-pour applications as well as flatwork.



	Product Code	Packaging
U.S.	2758623	Bag: 50 U.S. lbs. (22.7 kg)



Planitop® 11

Pre-Extended, Pumpable and Pourable Concrete Mix

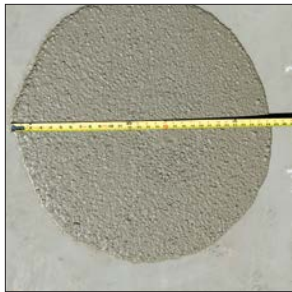
Planitop 11 is a one-component, pre-extended, cementitious, pumpable and pourable concrete mix for full-depth concrete repairs in above-, below- and on-grade applications. Designed for large-volume repairs with application thicknesses of 1" (2.5 cm) to full depth, *Planitop 11* is suitable for form-and-pour and form-and-pump applications. It is ideal for repairs on horizontal, vertical and overhead surfaces in applications such as tunnels, bridges, dams, parking garages, balcony edges and columns.



	Product Code	Packaging
U.S.	2756736 2756787	Bag: 80 lbs. (36.3 kg) Big bag: 3,300 lbs. (1 497 kg)



Form-and-pour mortars (continued)



Planitop® 11 SCC

Self-Consolidating Concrete Mix with Corrosion Inhibitor

Planitop 11 SCC is a one-component, cementitious, self-consolidating concrete mix with silica fume and a corrosion inhibitor for full-depth structural concrete repairs in above-, below- and on-grade applications.



	Product Code	Packaging
U.S.	2756829	Bag: 65 lbs. (29.5 kg)
	2758983	Big bag: 3,000 lbs. (1 361 kg)



Planitop® 15

Form-and-Pour, One-Component Repair Mortar

Planitop 15 is a one-component, shrinkage-compensated, cementitious, fiber-reinforced, fluid mortar. *Planitop 15* contains a corrosion inhibitor and silica fume, and is well-suited for form-and-pour and form-and-pump applications where high early strength and flowability are required.



	Product Code	Packaging
U.S.	2757925	Bag: 55 lbs. (24.9 kg)



Vertical and overhead mortars

Nonslump and non-sag are critical attributes in a vertical or overhead repair mortar. With these mortars from MAPEI, you get those features, plus high-strength, high-performance durability across a wide variety of application options.



Planitop® X

One-Component, Fast-Setting, Fiber-Reinforced, Vertical and Overhead Repair Mortar



Planitop X is a one-component, fiber-reinforced, shrinkage-compensated, high-early-strength, fast-setting, polymer-modified, high-build cementitious repair mortar with a corrosion inhibitor.

	Product Code	Packaging
U.S.	2757405	Bag: 10 lbs. (4.54 kg)
	2757423	Bag: 50 lbs. (22.7 kg)
	2757423BK	Pail: 50 lbs. (22.7 kg)



Planitop® XS

One-Component, Fast-Setting, Extended-Working-Time, Vertical and Overhead Repair Mortar



Planitop XS is an extended-working-time variation of *Planitop X*. Shrinkage-compensated, fiber-reinforced, polymer-modified and containing a proprietary corrosion inhibitor, *Planitop XS* features *Planitop X*'s outstanding workability and versatility. This product features a very low emission of volatile organic compounds and includes an offset of greenhouse gas emissions.

	Product Code	Packaging
U.S.	2757323	Bag: 50 lbs. (22.7 kg)
	2757323BK	Pail: 50 lbs. (22.7 kg)



Vertical and overhead mortars (continued)



Planitop® 12 SR

Sulfate-Resistant, Vertical, Overhead and Horizontal Repair Mortar with Silica Fume

Planitop 12 SR is a sulfate-resistant, one-component, shrinkage-compensated, cementitious repair mortar. *Planitop 12 SR* is fiber-reinforced and contains both silica fume and a corrosion inhibitor, and is intended for the repair of vertical, overhead and horizontal concrete surfaces.



	Product Code	Packaging
U.S.	2759525	Bag: 55 lbs. (24.9 kg)



Planitop® 23

Vertical and Overhead, Two-Component Repair Mortar

Planitop 23 is a two-component, fast-setting, polymer-modified, thixotropic, fiber-reinforced, cementitious mortar with a corrosion inhibitor. *Planitop 23* is intended for vertical and overhead repairs, and contains silica fume to provide a durable, high-strength mortar in these applications.



	Product Code	Packaging
U.S.	2758720	Part A, Bag: 38.58 lbs. (17.5 kg)
	2758820	Part B, Jug: 0.76 U.S. gal. (2.88 L)



Planitop® Shotcrete

Silica-Fume-Enhanced Shotcrete Mix

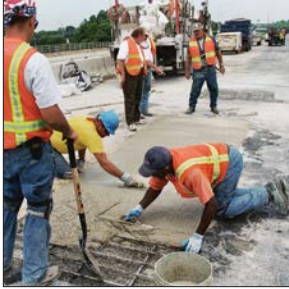
Planitop Shotcrete is a silica-fume-enhanced, cementitious mortar designed to be machine-applied on horizontal, vertical and overhead concrete surfaces, using the dry- or wet-mix spray process. *Planitop Shotcrete* is a special blend of hydraulic binders, silica fume and well-graded aggregates.



	Product Code	Packaging
U.S.	1389625	Bag: 55 lbs. (24.9 kg)
	1389680	Big bag: 3,000 lbs. (1 361 kg)

Rapid-hardening mortars

They're not just for roadwork anymore. Repairs of up to 8" (when used with extenders) can now be rapidly repaired in as little as one hour with these single-component, shrinkage-compensated repair mortars.



Planitop® 18

Very Rapid-Hardening Repair Mortar

Planitop 18 is a very rapid-hardening repair mortar that exhibits high early strength and provides a quick return to service.



	Product Code	Packaging
U.S.	2757523 2757585	Bag: 50 lbs. (22.7 kg) Big bag: 2,250 lbs. (1 021 kg)



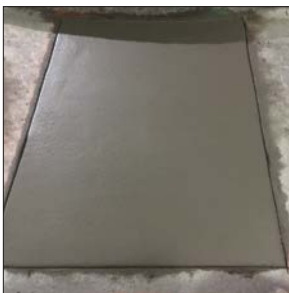
Planitop® 18 ES

Very Rapid-Hardening Repair Mortar with Extended Working Time

Planitop 18 ES is a one-component, high-early-strength, cementitious repair mortar, with a corrosion inhibitor, that has the very rapid-hardening characteristics of *Planitop 18* but with an extended set and working time.



	Product Code	Packaging
U.S.	2757623 2757687	Bag: 50 lbs. (22.7 kg) Big bag: 2,500 lbs. (1 134 kg)



Planitop® 18 TG

Very Rapid-Hardening, Trowel-Grade, High-Early-Strength Repair Mortar

Planitop 18 TG is a one-component, shrinkage-compensated, very rapid-hardening, trowel-grade, cementitious repair mortar with a corrosion inhibitor. *Planitop 18 TG* gains strength rapidly and is particularly suited for all horizontal concrete repairs from 1/2" to 2" (12 mm to 5 cm) thickness when applied neat and up to 8" (20 cm) when extended with aggregate.



	Product Code	Packaging
U.S.	2758423 2758483 2758486	50 lbs. (22.7 kg) Bag: 500 lbs. (227 kg) Big bag: 3,000 lbs. (1 361 kg)

Construction and Restoration Systems:

	Form-and-Pour/Form-and-Pump Applications				Trowelable/Screed Mortars			
Product Name	<i>Planitop 11</i>	<i>Planitop 11 SCC</i>	<i>Planitop 15</i>	<i>Planitop FD</i>	<i>Topcem™ Premix</i>	<i>Topcem Pronto</i>	<i>Mapecem® 102</i>	<i>Mapecem 202</i>
Number of Components	1	1	1	1 or 2	1 or 2	1	1	2
Maximum Extension Rate	Pre-extended	Pre-extended	50%, 27.5 lbs. (12.5 kg)	50%, 25 lbs. (11.3 kg)	20%, 10 lbs. (4.54 kg)	N/A	20%, 11 lbs. (4.99 kg)	20%, 11 lbs. (4.99 kg)
Yield, Neat Per Mixed Bag	0.65 cu. ft. (0.0184 m ³)	0.5 cu. ft. (0.0142 m ³)	0.46 cu. ft. (0.0130 m ³)	0.43 cu. ft. (0.0122 m ³)	0.41 cu. ft. (0.0116 m ³)	0.42 cu. ft. (0.0119 m ³)	0.48 cu. ft. (0.0136 m ³)	0.47 cu. ft. (0.0133 m ³)
Minimum Depth, Neat	N/A	N/A	3/8" (10 mm)	1/2" (12 mm)	1/4" (6 mm)	3/8" (10 mm)	1/4" (6 mm)	1/4" (6 mm)
Maximum Depth, Neat	N/A	N/A	4" (10 cm)	6" (15 cm)	2" (5 cm)	2" (5 cm)	2" (5 cm)	2" (5 cm)
Maximum Depth, Extended	Full-depth	Full-depth	Full-depth	Full-depth	4" (10 cm)	N/A	6" (15 cm)	6" (15 cm)
Pot Life	~ 30 min.	~ 30 min.	60 min.	~ 30 min.	30 min.	60 min.	20-30 min.	30 min.
Initial Set (hours:minutes)	> 5:00	> 6:00	> 3:00	1:00	0:50	1:30	0:50	1:00
Final Set (hrs.:min.)	> 6:00	> 8:00	< 10:00	2:00	< 2:00	3:20	1:10	1:30
Minimum Temperature	45°F (7°C)	45°F (7°C)	45°F (7°C)	45°F (7°C)	45°F (7°C)	45°F (7°C)	45°F (7°C)	45°F (7°C)
Compressive Strength – ASTM C109 (CAN/CSA-A5)								
1 day	> 2,500 psi (17.2 MPa)	> 2,200 psi (15.2 MPa)	> 4,350 psi (30 MPa)	> 3,200 psi (22.1 MPa)	> 2,000 psi (13.8 MPa)	> 1,150 psi (7.93 MPa)	> 5,800 psi (40 MPa)	> 3,100 psi (21.4 MPa)
7 days	> 5,000 psi (34.5 MPa)	> 5,500 psi (37.9 MPa)	> 8,600 psi (59.3 MPa)	> 7,100 psi (49.0 MPa)	> 2,700 psi (18.6 MPa)	> 3,190 psi (22 MPa)	> 7,250 psi (50 MPa)	> 4,950 psi (34.1 MPa)
28 days	> 6,000 psi (41.4 MPa)	> 7,000 psi (48.3 MPa)	> 10,875 psi (75 MPa)	> 8,100 psi (55.9 MPa)	> 3,000 psi (20.7 MPa)	> 4,350 psi (30 MPa)	> 7,975 psi (55 MPa)	> 6,150 psi (42.4 MPa)
Compatible with Mapeshield™ I	●	●	●	●	●	●	●	●
Interior and Exterior Applications	●	●	●	●	●	●	●	●
Residential	●	●	●	●	●	●	●	●
Commercial	●	●	●	●	●	●	●	●
Industrial	●	●	●	●	●	●	●	●
Minimum ICRI CSP Needed	#5	#5	#5	#5	#5	#5	#5	#5



Quick-Reference Guide

Trowelable/Screed Mortars			Horizontal Cement Overlays	Vertical Repair Mortars				Self-Leveling Toppings
<i>Planitop 18</i>	<i>Planitop 18 ES</i>	<i>Planitop 18 TG</i>	<i>Planitop 25</i>	<i>Planitop 12 SR</i>	<i>Planitop 23</i>	<i>Planitop X</i>	<i>Planitop XS</i>	<i>Planitop EL</i>
1	1	1	2	1	2	1 or 2	1 or 2	1
80%, 40 lbs. (18.1 kg)	50%, 25 lbs. (11.3 kg)	80%, 40 lbs. (18.1 kg)	20%, 12 lbs. (5.44 kg)	N/A	N/A	N/A	N/A	N/A
0.42 cu. ft. (0.0119 m ³)	0.41 cu. ft. (0.0116 m ³)	0.41 cu. ft. (0.0116 m ³)	0.47 cu. ft. (0.0133 m ³)	0.46 cu. ft. (0.0130 m ³)	0.36 cu. ft. (0.0101 m ³)	0.46 cu. ft. (0.0130 m ³)	0.46 cu. ft. (0.0130 m ³)	0.45 cu. ft. (0.0127 m ³)
1/2" (12 mm)	1/4" (6 mm)	1/2" (12 mm)	1/4" (6 mm)	1/4" (6 mm)	1/4" (6 mm)	1/16" (1.5 mm)	1/16" (1.5 mm)	1/4" (6 mm)
1" (2.5 cm)	1" (2.5 cm)	2" (5 cm)	1" (2.5 cm)	2" (5 cm)	2" (5 cm)	4" (10 cm)	4" (10 cm)	1/4" (6 mm)
Full-depth	6" (15 cm)	Full-depth	2" (5 cm)	N/A	N/A	N/A	N/A	N/A
15 min.	30 min.	~ 15 min.	20 min.	> 60 min.	20 min.	5 min.	20 min.	~ 30 min.
> 0:12	> 0:45	> 0:15	1:00	3:00	0:50	> 0:06	> 0:40	5:00
≤ 0:30	< 1:50	< 0:40	1:10	6:30	1:30	< 0:25	< 1:00	6:00
32°F (0°C)	45°F (7°C)	32°F (0°C)	45°F (7°C)	45°F (7°C)	45°F (7°C)	55°F (13°C)	55°F (13°C)	40°F (4°C)

> 7,800 psi (53.8 MPa)	> 5,000 psi (34.5 MPa)	> 7,800 psi (53.8 MPa)	> 3,300 psi (22.8 MPa)	> 2,900 psi (20 MPa)	> 4,060 psi (28 MPa)	> 5,075 psi (35 MPa)	> 3,000 psi (20.7 MPa)	> 2,000 psi (13.8 MPa)
> 8,490 psi (58.6 MPa)	> 5,500 psi (37.9 MPa)	N/A	> 5,800 psi (40 MPa)	> 7,975 psi (55 MPa)	N/A	> 5,800 psi (40 MPa)	> 4,000 psi (27.6 MPa)	> 4,000 psi (27.6 MPa)
> 9,400 psi (64.8 MPa)	> 7,000 psi (48.3 MPa)	> 9,400 psi (64.8 MPa)	> 7,200 psi (49.7 MPa)	> 10,450 psi (72.1 MPa)	> 7,975 psi (55 MPa)	> 6,600 psi (45.5 MPa)	> 5,000 psi (34.5 MPa)	> 5,000 psi (34.5 MPa)
●	●	●	N/A	●	●	●	●	N/A
●	●	●	●	●	●	●	●	●
●	●	●	●	●	●	●	●	●
●	●	●	●	●	●	●	●	●
●	●	●	●	●	●	●	●	●
#5	#5	#5	#5	#5	#5	#5	#5	#3





**MAPEI Headquarters
of North America**

1144 East Newport Center Drive
Deerfield Beach, Florida 33442
1-888-US-MAPEI (1-888-876-2734) /
(954) 246-8888

Technical Services

U.S. and Puerto Rico:

Flooring: 1-800-992-6273

Concrete and heavy construction:
1-888-365-0614

Customer Service

1-800-42-MAPEI (1-800-426-2734)

Copyright ©2025 by MAPEI Corporation ("MAPEI") and all rights are reserved. All intellectual property rights and other information contained in this document are the exclusive property of MAPEI (or its parent or related companies), unless otherwise noted. No part of this document may be reproduced or transmitted in any form without the prior written consent of MAPEI.

Printed in the USA.



— MAPEI USA • MAPEI Caribe —