

# CEMENTITIOUS TOPPING SOLUTIONS

**Ultratop**<sup>®</sup> Natural, Polished  
and Terrazzo Systems

# Installation Specs



**Ultratop**  
Natural System

This system is designed for resurfacing indoor concrete floors, producing creative surfaces with the effect of natural shades.

Examine substrates and conditions under which materials will be installed.

Mechanical preparation of the surface is required to obtain a minimum ICRI Concrete Surface Profile of 3 (CSP #3).

Always use foam tape to round off column bases as well as any sharp corners that protrude into the room receiving the topping.

Always prime the prepared surface with MAPEI's *Primer SN* or *Primer SN Fast* following with a full sand broadcast (to rejection) with #20 to #40 mesh sand.

MAPEI's *Planiseal MB* 100%-solids, epoxy moisture barrier can be installed if required.

All existing construction/control/expansion joints, saw cuts and moving cracks must be properly repaired. Honoring joints in a self-leveled floor is critical to the success of the installation.

*Ultratop* Natural System can be easily installed from 1/4" to 2" (6 mm to 5 cm). It quickly hardens within 2 to 3 hours.

Always use the proper MAPEI sealer for stain protection.



**Ultratop**  
Polished System

This system is designed for resurfacing indoor polished concrete floors using dry-polishing techniques.

Examine substrates and conditions under which materials will be installed.

Mechanical preparation of the surface is required to obtain a minimum ICRI Concrete Surface Profile of 3 (CSP #3).

Always use foam tape to round off column bases as well as any sharp corners that protrude into the room receiving the topping.

Always prime the prepared surface with MAPEI's *Primer SN* or *Primer SN Fast* following with a full sand broadcast (to rejection) with #16 to #30 mesh sand.

MAPEI's *Planiseal MB* 100%-solids, epoxy moisture barrier can be installed if required.

All existing construction/control/expansion joints, saw cuts and moving cracks must be properly repaired. Honoring joints in a self-leveled floor is critical to the success of the installation.

*Ultratop* Polished System can be easily installed from 3/8" to 2" (10 mm to 5 cm). It quickly hardens within 2 to 3 hours.

Concrete-polish equipment and tooling for use as part of the multi-step dry mechanical process and accessories must be in good condition per the contractor recommendations.

Film-forming, high-gloss protective coating *Mapecrete Protector FF* is recommended. Finish the coating as determined by the intended use of the *Ultratop* surface.



**Ultratop**  
Terrazzo System

The *Ultratop* Terrazzo System is designed for indoor terrazzo concrete floors with large or fine aggregate exposed, using decorative marble, glass or recycled plastic chips up to 1/2" (12 mm) in size.

Examine substrates and conditions under which materials will be installed.

Mechanical preparation of the surface is required to obtain a minimum ICRI Concrete Surface Profile of 3 (CSP #3).

Always use foam tape to round off column bases as well as any sharp corners that protrude into the room receiving the topping.

Always prime the prepared surface with MAPEI's *Primer SN* or *Primer SN Fast* following with a full sand broadcast (to rejection) with #16 to #30 mesh sand.

MAPEI's *Planiseal MB* 100%-solids, epoxy moisture barrier can be installed if required.

All existing construction/control/expansion joints, saw cuts and moving cracks must be properly repaired. Honoring joints in a self-leveled floor is critical to the success of the installation.

Concrete-polish equipment and tooling for use as part of the multi-step dry mechanical process and accessories must be in good condition per the contractor recommendations.

Film-forming, high-gloss protective coating *Mapecrete Protector FF* is recommended. Finish the coating as determined by the intended use of the *Ultratop* surface.

NOTE: For surfaces with extremely large aggregates exposed, as with "palladiana" floors, contact MAPEI's Technical Services Department at [CRS@mapei.com](mailto:CRS@mapei.com) for system recommendations.



Resurfacing concrete, especially concrete flooring in heavy-traffic venues, can be challenging. Installers need products that are attractive, textured and highly durable, yet also offer fast-tracked application and curing times.

MAPEI helps to answer those challenges with three unique *Ultratop* systems:

- **Ultratop Natural System**
- **Ultratop Polished System**
- **Ultratop Terrazzo System**

MAPEI's *Ultratop* systems are engineered to provide extremely durable yet visually pleasing flooring surfaces for residential, industrial and commercial buildings. Such surfaces are especially desirable for large public venues that feature heavy foot traffic, like hotels, malls, museums, theaters, stadiums and exhibition halls. These high-performance, fast-track, self-leveling, cementitious topping systems quickly resurface a wide variety of surfaces, providing best-in-class quality and endurance for every need. When used with diamond polishing or a *Mapefloor Finish* coating, these systems provide a combination of accelerated protection and durable, aesthetic surface effects.

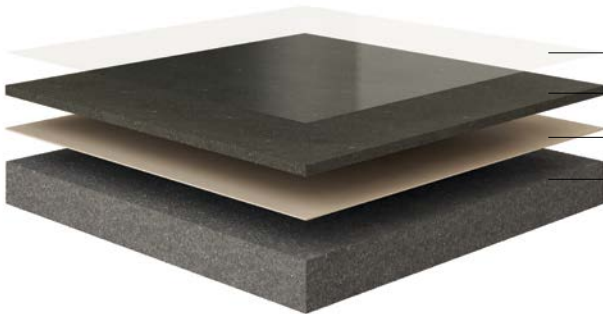


MAPEI's FastTrack Ready products reduce the required steps of an installation and/or perform more quickly than current methods.



SCS Global Services' Indoor Advantage Gold certification signifies that select products' VOC emissions have been tested and comply with California Department of Health (CDPH) Standard Method v1.2-2017.

# Ultratop Polished System



- Sealers and densifiers from *Mapefloor* and *Mapecrete* range
- Cementitious topping from *Ultratop* range
- Epoxy primer + sand broadcast
- Concrete substrate prepared to CSP#3

- System components can be selected based on the desired design.
- The system is polishable by using proper grinding/polishing equipment.
- The sealer must be selected based on the specified system in order to achieve the desired finish.

Primers	Cementitious Toppings	Sealers
<b>Primer SN™</b> epoxy primer	<b>Ultratop [NA]</b> Natural Gray or White self-leveling, fast-track topping	<b>Mapecrete® Hard LI</b> lithium silicate, densifier and sealer
<b>Primer SN Fast</b> fast-setting, epoxy primer	<b>Ultratop SP</b> Gray self-leveling, fast-track topping	<b>Mapecrete Protector FF</b> high-gloss protective coating

Dyes and integral colors designed for cementitious toppings may be used. E-mail MAPEI Technical Services at [CRS@mapei.com](mailto:CRS@mapei.com) for recommendations. The system can be extended on site with dry aggregates up to 1/4" (6 mm) in size, based on the desired design.

# Ultratop Terrazzo System



Sealers and densifiers from *Mapecrete* range

Cementitious toppings from *Ultratop* range and large aggregate size

Epoxy binder to fix large aggregate size

Epoxy primer + sand broadcast

Concrete substrate prepared to CSP#3

This system is designed for indoor terrazzo concrete floors with large or fine aggregate exposed, using decorative marble, glass or recycled plastic chips up to 1/2" (12 mm) in size. Extend *Ultratop* by weight based on future project requests. Mixing tests must be performed with desired aggregates and integral liquid colors during the mix design process before the samples are submitted to the customer.

- System components can be selected based on the desired design.
- The system is polishable by using proper grinding/polishing equipment.
- The sealer must be selected based on the specified system in order to achieve the desired finish.

Primers	Cementitious Toppings	Sealers
<b>Primer SN</b> epoxy primer	<b>Ultratop</b> Natural Gray self-leveling, fast-track topping	<b>Mapecrete Hard LI</b> lithium silicate, densifier and sealer
<b>Primer SN Fast</b> fast-setting, epoxy primer	<b>Ultratop</b> White self-leveling, fast-track topping	<b>Mapecrete Protector FF</b> high-gloss protective coating

Dyes and integral colors designed for cementitious toppings may be used. E-mail MAPEI Technical Services at [CRS@mapei.com](mailto:CRS@mapei.com) for recommendations.

# Ultratop Natural System



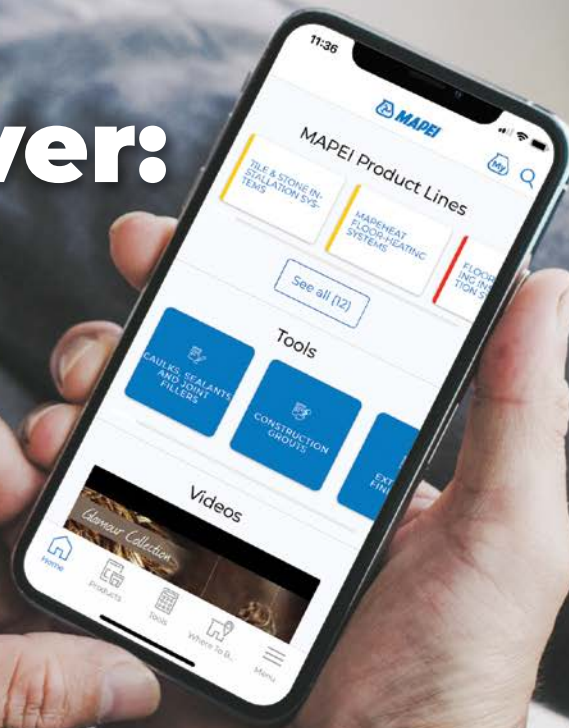
- Sealers from *Mapefloor Finish* range
- Cementitious topping from *Ultratop* range
- Epoxy primer + sand broadcast
- Concrete substrate prepared to CSP#3

- System components can be selected based on the desired design.
- The sealer must be selected based on the specified system in order to achieve the desired finish.

Primers	Cementitious Toppings	Sealers
<b>Primer SN</b> epoxy primer	<b>Ultratop</b> Natural Gray self-leveling, fast-track topping	<b>Mapefloor Finish 630</b> clear, protective acrylic coating
<b>Primer SN Fast</b> fast-setting, epoxy primer	<b>Ultratop</b> White self-leveling, fast-track topping	<b>Mapefloor Finish 58 W</b> matte-finish polyurethane coating
		<b>Mapecrete Protector FF</b> high-gloss protective coating

Dyes and integral colors designed for cementitious toppings may be used. E-mail MAPEI Technical Services at [CRS@mapei.com](mailto:CRS@mapei.com) for recommendations.

# Better than ever: MAPEI's app



Available for free download on the App Store or Google Play, MAPEI's app puts the power of MAPEI in the palm of your hand. The solutions to a wide range of problems are just a touch away.



Simply install MAPEI's app to stay up to date with the latest information from MAPEI, including:



• Technical Data Sheets for all of MAPEI's extensive product lines.



• Links to MAPEI's video library, for quick access to product spotlights, MTI-TV episodes and more.



• All of MAPEI's 11 product calculators, to help you estimate how much product you'll need.



• A "Where to Buy" section that lets you look up the distributor closest to you.



• **Realtà MAPEI North America**, MAPEI's popular magazine, for the latest on industry information, the latest product technology and more.

More than ever, the app brings MAPEI's vast technical resources to your phone.

For your free download, visit the App Store or Google Play.



— MAPEI USA • MAPEI Caribe —

#### **MAPEI Headquarters of North America**

1144 East Newport Center Drive  
Deerfield Beach, Florida 33442  
1-888-US-MAPEI (1-888-876-2734) /  
(954) 246-8888

#### **Technical Services**

1-888-365-0614 (U.S. and Puerto Rico)  
1-800-361-9309 (Canada)  
CRS@mapei.com

#### **Customer Service**

1-800-42-MAPEI (1-800-426-2734)

#### **Services in Mexico**

0-1-800-MX-MAPEI (0-1-800-696-2734)

Copyright ©2023 by MAPEI Corporation (“MAPEI”) and all rights are reserved. All intellectual property rights and other information contained in this document are the exclusive property of MAPEI (or its parent or related companies), unless otherwise noted. No part of this document may be reproduced or transmitted in any form without the prior written consent of MAPEI.

Printed in the USA.

