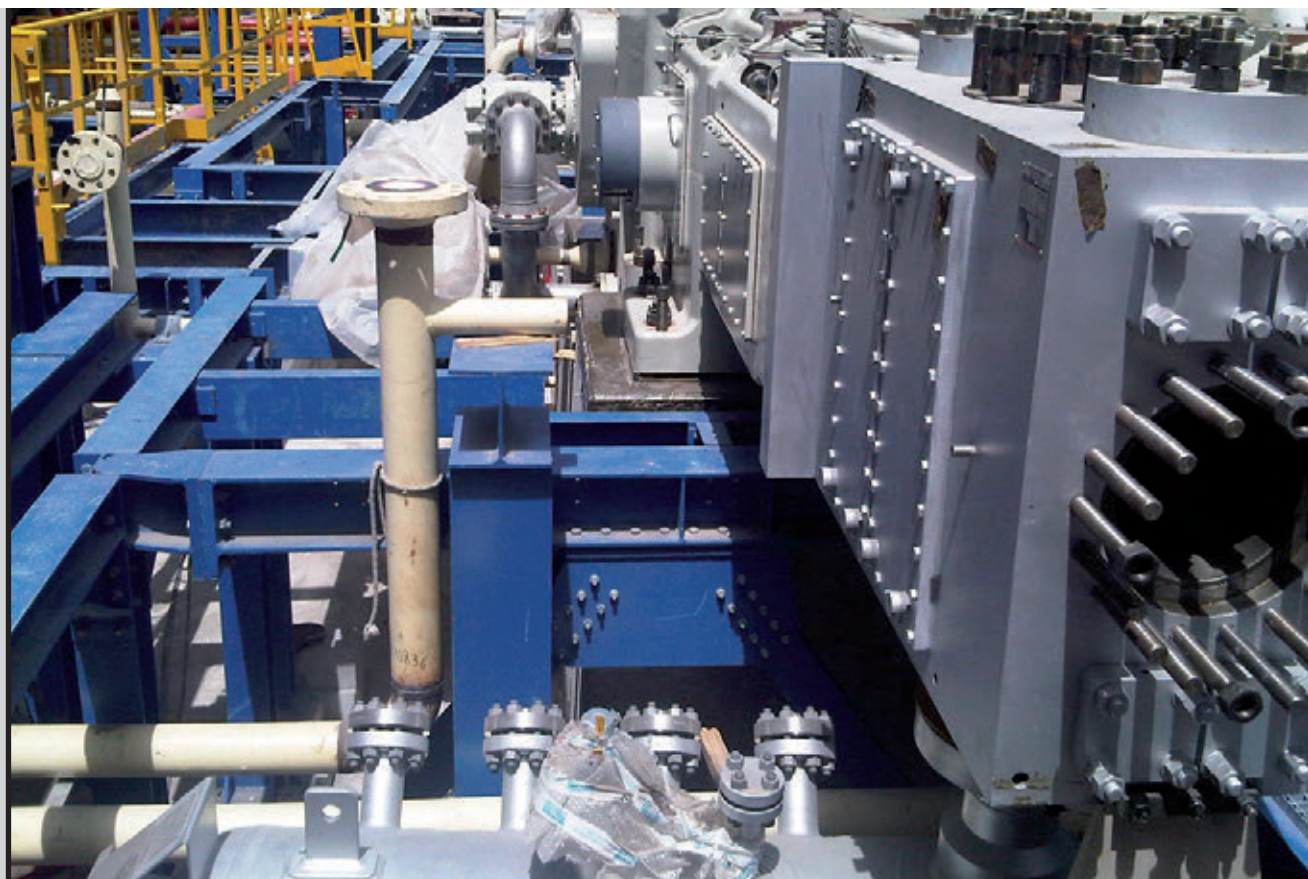


Industrial

Solutions



► Industrial

For the power-generation, chemical processing, refining, and pulp and paper industries, MAPEI's complete range of cement and epoxy construction and precision grouts can handle the most demanding requirements for grouting equipment. Whether the need is for the alignment and support of pumps, compressors, turbines or storage tanks, MAPEI's grouting solutions are formulated for both static and dynamic loading, high vibration, temperature extremes and chemical attack.

MAPEI's structural concrete repair products are available in hand, spray, pump and pour applications for horizontal, vertical and overhead substrate repairs, such as beams, tank floors and walls, columns, foundation rebuilds and secondary containment areas. Our epoxy injection line of products is used to fill and seal cracks and voids in these structures, while MAPEI structural strengthening products are designed to restore structural integrity to these elements.



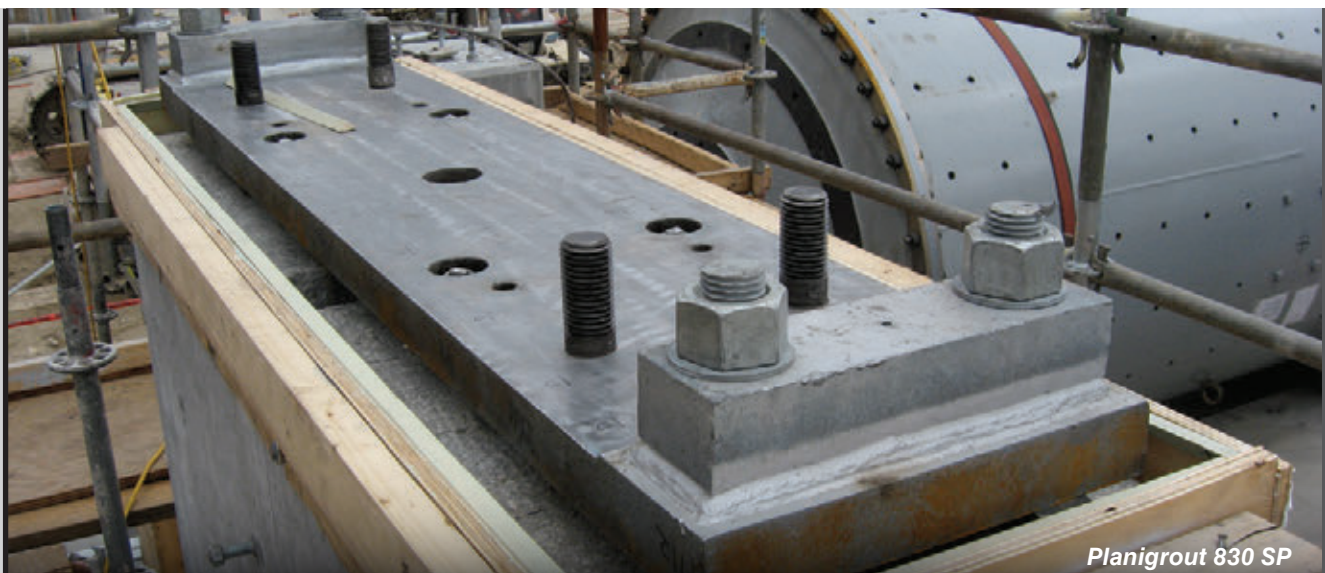
Esquimalt Graving Dock
Victoria, BC

A. Grouting and Concrete Repair

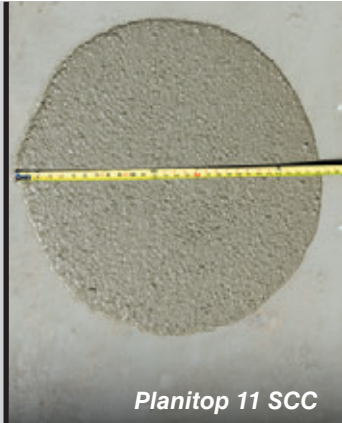
1. **Planigrout® 712, Planigrout 728** and **Planigrout 755** cementitious grouts are ideal for precision machine base-plate grouting and construction-grade grouting of pipe racks for the chemical processing, power, refining, and pulp and paper industries.



2. **Planigrout® 830 SP** high-performance epoxy grout is for machine base-plate grouting of pumps and compressors where both high vibration and chemicals are present in refining, gas transmission and chemical processing industries. It also can be used for crane rail grouting at ports, where dynamic loading demands an epoxy grout with high flexural strength.



3. **Planitop® 11 SCC, Planitop 23, Planitop 12 SR, Planitop 15, Planitop 18, Planitop 18 ES, Planitop 18 TG** and **Mapecem® 202** are for structural repairs of horizontal, vertical and overhead concrete beams, slabs and columns. They are available as hand- or spray-applied and in both form-and-pour and form-and-pump applications.



Planitop 11 SCC



Planitop 15



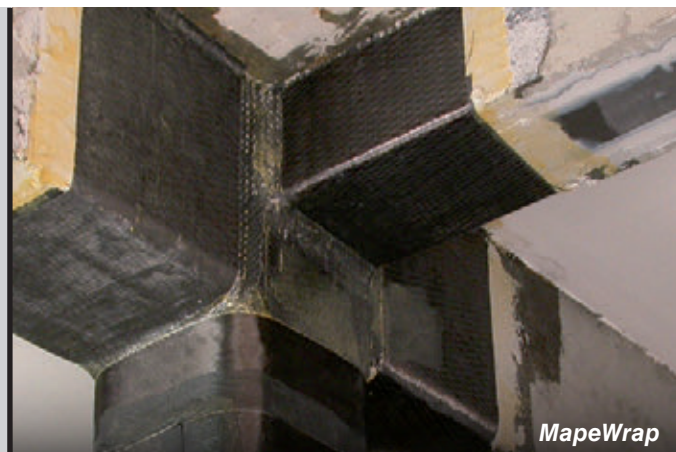
Planitop 18



Mapecem 202

B. Structural Strengthening

1. **MapeWrap™** fiber-reinforced polymer (FRP) structural strengthening systems, consisting of flexible carbon and fiberglass fiber fabrics that are applied with dedicated epoxy resins to be used for the repair and maintenance of deteriorated concrete elements (columns and beams), to upgrade load-bearing capacity and to rectify original design flaws.
2. **Carboplate™** and **Maperod™** pre-impregnated carbon fiber plates and rods are for repair and upgrade of beams and slabs for flexural strengthening, and for the reinforcement of structures subject to vibration.
3. **MapeWrap™ C Fiocco** high-strength cord, made from uni-directional carbon fiber threads, is designed to be impregnated with **MapeWrap 21** epoxy saturant to provide structural and functional restoration of concrete and masonry elements.



MapeWrap



Carboplate



Construction Grouts



Waterproofing



Concrete Repair Mortars



Self-Leveling Underlayments



Decorative Toppings



Exterior Finishing



Epoxy Adhesives



Corrosion Protection



Fiber-Reinforced Polymer

For more information on the complete line
of MAPEI products, visit our Website at
www.mapei.com.

Industrial Solutions



MAPEI USA
MAPEI Canada

MAPEI Headquarters of North America

1144 East Newport Center Drive
Deerfield Beach, Florida 33442
1-888-US-MAPEI (1-888-876-2734) /
(954) 246-8888

Technical Services

1-800-365-0614 (U.S. and Puerto Rico)
1-800-361-9309 (Canada)

Customer Service

1-800-42-MAPEI (1-800-426-2734)

Services in Mexico

0-1-800-MX-MAPEI (0-1-800-696-2734)

**For the most current BEST-BACKEDSM
product data and warranty information,
visit www.mapei.com.**

Edition Date: November 9, 2018

