

A modern, bright restaurant interior featuring white rectangular tables and grey plastic chairs. The space is decorated with large wooden planters filled with green ferns, hanging pendant lights with geometric patterns, and a wall with vertical wooden slats and greenery. The floor is a dark, speckled material.

SYSTEM SOLUTIONS GUIDE

RETAIL AND RESTAURANTS



INTRO	02
 EXTERIOR	
Below-grade waterproofing: Positive-side construction.....	06
Building veneer: Tile or stone.....	07
Esplanade/mall/restaurant exterior area: Tile or stone.....	08
Valet area: Tile or stone	09
Building facade: Protective and decorative acrylic coatings	10
Parking deck: System for heavy-duty vehicular traffic.....	11
 INTERIOR	
Floors: Ceramic tile or stone	12
Retail common spaces: Luxury vinyl plank/tile	13
Elevator cab floor: Tile or stone over steel	14
Retail spaces: Homogeneous/heterogeneous sheet vinyl	15
Retail/restaurant: Broadloom carpet	16
Back kitchen restaurant / food court: Quarry tile.....	17
Retail sales area / restaurant: Carpet tiles.....	18
Retail spaces / restaurant areas: Decorative concrete.....	19
Wall/floor with gauged porcelain tile panels: Tile over tile.....	20
Service and maintenance areas: Rubber over steel	21
Service and maintenance areas: Vinyl composition tile (VCT).....	22
High-moisture areas: Epoxy moisture barriers.....	23
Fast-track installations on green concrete: High-moisture areas.....	24
 PRODUCT INDEX	26

Construction of retail spaces and restaurants is booming, and each project brings specific challenges. MAPEI is your partner in answering these important challenges:

Fast track

Retail spaces and restaurants can generate impressive revenue per square foot – but only once the doors are open. These buildings are often designed with a compressed schedule in mind. MAPEI's FastTrack Ready™ products are



designed to reduce installation steps or perform more quickly than current methods. And to deal with the

moisture issues that “green” concrete can pose, MAPEI offers concrete additives that can improve the performance of the concrete you select. Best of all, MAPEI's team will work with you to make sure the products you select follow your fast-track schedule too

Longevity

Retail and restaurant buildings can't afford downtime. MAPEI is there from the first stages of construction, protecting against water intrusion with our below-grade waterproofing products. Our high-performance levelers and adhesives make sure the floors are up to the task; we stay with you until the final finishes are in place. Plus, we back our products with our industry-leading Best-BackedSM warranties that ensure we will stand behind you long after the general contractor has handed over the keys to the building.

Beauty

Today's retail and restaurant settings are showcases of architecture and design. Common areas are bright and open, and feature high-end finishes. MAPEI's experience in working with all of the major floor and wall coverings on the market today will be your best asset in making sure that the installations are as trouble-free as they are beautiful. We also offer polishable concrete finishes, colorful (and durable) coatings for building exteriors, and a beautiful array of grout choices for tile installations.

Sustainability

In the past few years, there has been a growing demand for sustainable designs for high-rise buildings. The most common requirements are: water use and energy efficiency; indoor environmental quality (IEQ); the building's impact on the atmosphere (carbon footprint); and the materials and resources specified for the project.

This trend has also led to an evolution in the systems and techniques, and MAPEI has formulated its products accordingly. We offer adhesives, binders, admixtures, ready-mixed screed mortars, primers, consolidators and waterproofing products that provide sustainability in a transparent manner. For example, we provide products that are solvent-free and have low amounts of volatile organic compounds (VOC), keeping in mind the health and well-being of the installer and the occupants alike. For information on MAPEI's commitment to sustainability and transparency, as well as how MAPEI products may contribute to green building standards and certification systems, email sustainability_USA@mapei.com (USA) or sustainability-durabilite@mapei.com (Canada).

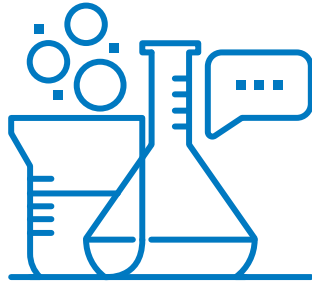
This brochure will introduce you to MAPEI products for the common systems found in retail and restaurant settings, to help make your next project a reality.

Full-Breadth Product Lines

MAPEI has supplied residential and major commercial projects with total installation solutions for tile and stone, floor coverings and decorative concrete as well as concrete restoration and admixtures for more than 85 years.

1	2	3	4	5
Tile & Stone Installation Systems	<i>UltraCare</i> Stone, Tile, Grout Care and Maintenance Solutions	Floor Covering Installation Systems	Products for Sports Flooring	Products for Wood Flooring
6	7	8	9	10
Concrete Restoration Systems	Products for Structural Strengthening	Products for Underground Construction (UTT)	Admixtures for Concrete	Waterproofing Systems
11	12	13	<i>* USA & Puerto Rico only</i> <i>** Cementitious products only are available in the USA</i>	
Cement Additives	Products for the Marine Industry*	Cementitious & Resin Flooring Systems**		





Innovative Research & Development

Worldwide, more than 12% of MAPEI employees are involved in the development of new technologies and product innovations, keeping our customers at the forefront of the construction industry. The company has taken the additional initiative of focusing its R&D efforts on environmentally sustainable solutions.

To remain on the cutting edge of innovation, MAPEI reinvests 5% of its annual revenues into researching and developing new products and technologies. This corporate priority has produced such innovations as:

- High-Hydrated Cement Technology (HCT™), which offers high early strength, excellent workability, ultra fast curing, unmatched long-term durability and efflorescence-free curing.
- Easy Glide Technology™, which offers extreme ease of application, yielding a buttery consistency that reduces fatigue during installation.
- *Ultrabond ECO*® product formulations beginning in the 1980s with extremely low emissions of volatile organic compounds (VOCs) for improved indoor air quality.
- FastTrack Ready products, which reduce the required steps of an installation and/or perform more quickly than current methods.
- High-Transfer Technology™ products, which offer superior mortar-wetting properties to promote improved mortar transfer between the tile and the substrate. This technology

helps to deliver ultimate coverage to maximize bond strength performance and is ideal for lippage control system applications.

Quality Control and Efficient Manufacturing

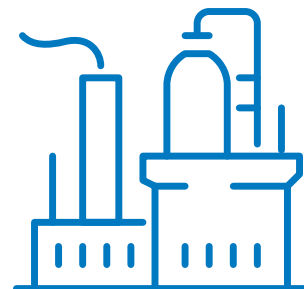
In North America, most MAPEI facilities have been certified to ISO 9001 quality management and ISO 14001 environmental management standards. Our products are produced according to exacting standards, strictly adhering to process and procedural guidelines with documented compliance. This rigid production format is vigilantly followed to ensure that every product is produced uniformly from batch to batch.

Powerful, Efficient and Sustainable Manufacturing

Cutting-edge production technology is used in MAPEI's production facilities, where the entire manufacturing process is optimized by continual quality control, from raw materials to final packaging.

MAPEI's production statistics are impressive: 86 production facilities in 35 countries on five continents. Along with the 27,900 tons of finished products that are manufactured at our production facilities every day, we receive just as many tons of raw materials to keep our sites supplied around the world.

MAPEI's production efforts are reflected through optimization of logistics costs, close proximity to our customers, and a guarantee of maximum efficiency of production processes while respecting the environment.



Warranty Program

To bring it all together, MAPEI complements the industry's best products with simple, easy-to-understand requirements for comprehensive warranties – allowing you to build systems within desired warranty timeframes.

MAPEI's advanced systems give you the built-in confidence provided by superior in-field technical support and the Best-BackedSM warranties in the business.



Professional Support

Knowledgeable Sales Force

MAPEI offers the largest, most highly trained sales force within the industry to serve your needs for product application/installation recommendations. Its representatives are focused on supporting you with product knowledge, product demonstrations, product information, marketing support materials and other relevant tools to help you generate business.

Technical Expertise

An in-house Technical Services Product Support Team responds to customers' telephone inquiries with answers to installation challenges in real time. In addition, Regional Technical Services Representatives provide field support, including jobsite visits, product training and advice on product selection.

Call us at 1-800-992-6273 (flooring, U.S. and Puerto Rico), 1-888-365-0614 (non-flooring, U.S. and Puerto Rico) or 1-800-361-9309 (Canada).

Customer Service Plus

MAPEI's standards for customer service are best-in-class. Our leadership includes such service innovations as:

- Customer-friendly, efficient processes
- One-call resolution
- Employee commitment to effective customer dialog

Call us at 1-800-42-MAPEI (1-800-426-2734).



EXTERIOR

BELOW-GRADE WATERPROOFING

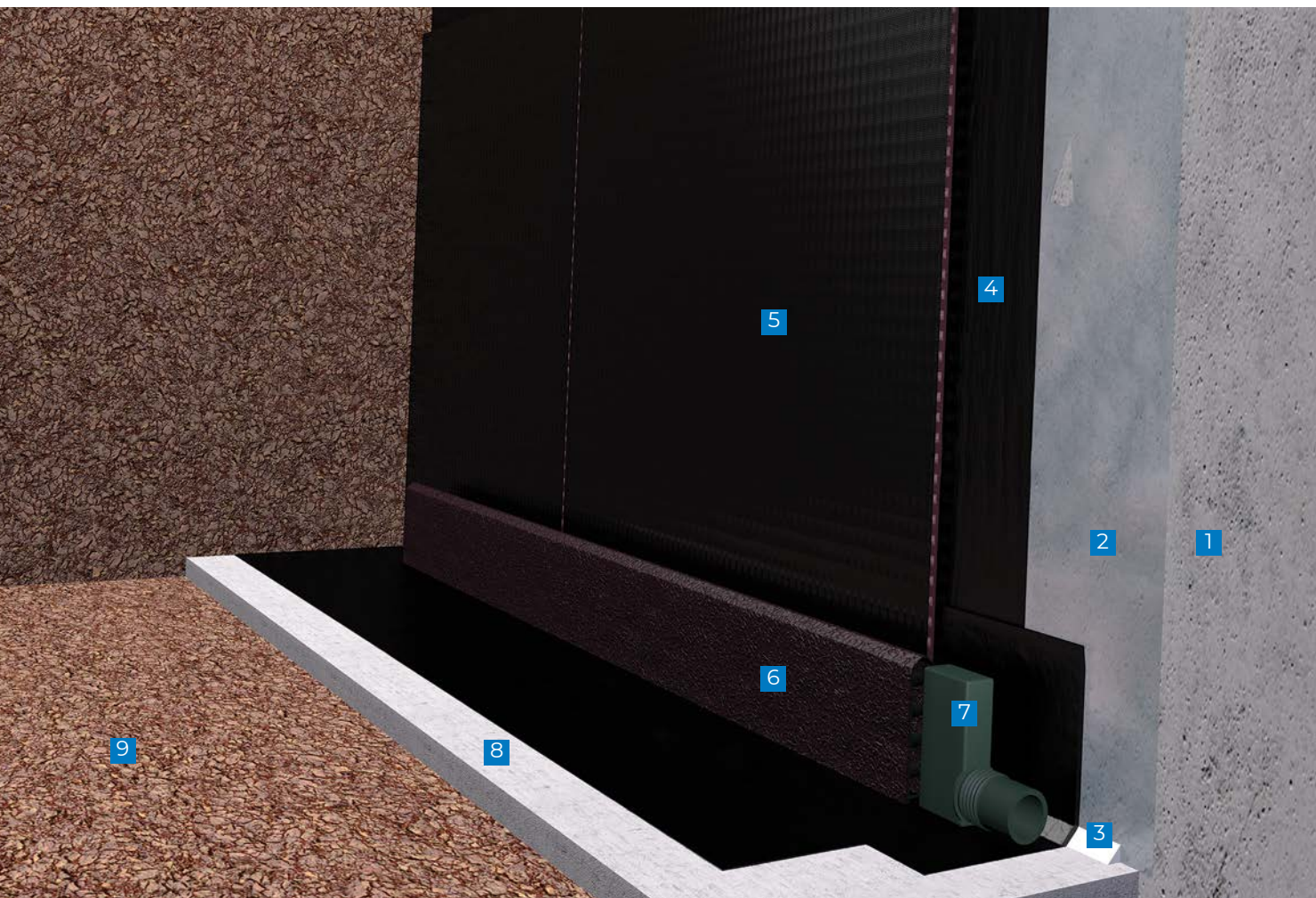
POSITIVE-SIDE CONSTRUCTION

Second only to fire, water has the most deleterious impact on a structure and its contents. As such, MAPEI offers positive-side waterproofing systems that are installed on the outboard side of the structure to keep water out of the building. The *Planiseal Membrane SA* system, based on a self-adhered waterproofing membrane, is a simple and effective means of accomplishing this goal.

Issue: Prevent water intrusion into buildings following the construction of their foundation walls

Solution: Positive-side waterproofing, through the *Planiseal Membrane SA* waterproofing system, to prevent water intrusion

- 1 Concrete
- 2 *Mapebond 710*
(or *Mapebond 720*)
- 3 *Mapectex P2 NS*
- 4 *Planiseal Membrane SA*
- 5 *Mapedrain 25*
- 6 *Mapedrain TD*
Drainage Composite
- 7 *Mapedrain TD Fittings*
(end outlet)
- 8 Concrete footing
- 9 Soil



EXTERIOR

BUILDING VENEER

TILE OR STONE

Building exteriors are subjected to a wide variety of conditions. From UV exposure to high winds to freezing conditions, the products for the outside of the building must be up to the task. Tile and stone have historically been the exterior cladding of choice for demanding applications.

Issues: Water causing efflorescence; freeze/thaw concerns

Solution: Installation material designed to not contribute to efflorescence and to resist freeze/thaw damage

- 1 Concrete
- 2 *Modified Mortar Bed* over slurry coat
- 3 *Mapelastic AquaDefense* (or *Mapelastic Turbo* or *Mapelastic 315*)
- 4 *Granirapid* System
- 5 Ceramic tile or stone
- 6 *Ultracolor Plus FA*
- 7 *Mapesil T Plus*
- 8 *UltraCare Penetrating Plus* Stone, Tile & Grout Sealer



EXTERIOR

ESPLANADE/MALL/ RESTAURANT EXTERIOR AREA

TILE OR STONE

Tile and stone flooring in exterior applications can allow inside spaces to flow outside seamlessly. Exterior applications do have challenges that inside installations do not, such as temperature swings, freeze/thaw considerations and vehicular traffic. The correct products beneath and around the tile or stone can be the difference between short-term problems and long-term solutions.

Issues: High traffic, pivot areas, traffic patterns

Solutions: Suitable tile and stone installation systems that provide durable long-lasting finishes

- 1 Concrete
- 2 *Ultraflex 2* slurry coat
- 3 *Modified Mortar Bed*
- 4 *Mapelastic AquaDefense*
- 5 *Keraflex Super*
- 6 Tile or stone
- 7 *Kerapoxy CQ*
- 8 *Mapesil T Plus*
- 9 *UltraCare Penetrating Plus* Stone, Tile & Grout Sealer



Shopping/restaurant settings now include valet parking as part of the customer experience. These areas are often tiled for durability and ease of maintenance. Traffic is also typically accommodated in much the same manner, with covered porticos and exterior tile installations.

Issues: Vehicular traffic; weather; salts; efflorescence

Solution: Installation materials that withstand high-traffic demands and do not contribute to efflorescence

- 1 Concrete
- 2 *Ultraflex 2* (slurry bond coat)
- 3 *Modified Mortar Bed*
- 4 *Mapelastic AquaDefense* (or *Mapelastic Turbo* or *Mapelastic 315*)
- 5 *Granirapid System*
- 6 Ceramic tile (or stone)
- 7 *Ultracolor Plus FA* (or *Ultracolor Plus Max*)
- 8 *Mapesil T Plus*
- 9 *UltraCare Penetrating Plus SB* Stone & Porcelain Tile Sealer

EXTERIOR

VALET AREA

TILE OR STONE



EXTERIOR

BUILDING FACADE

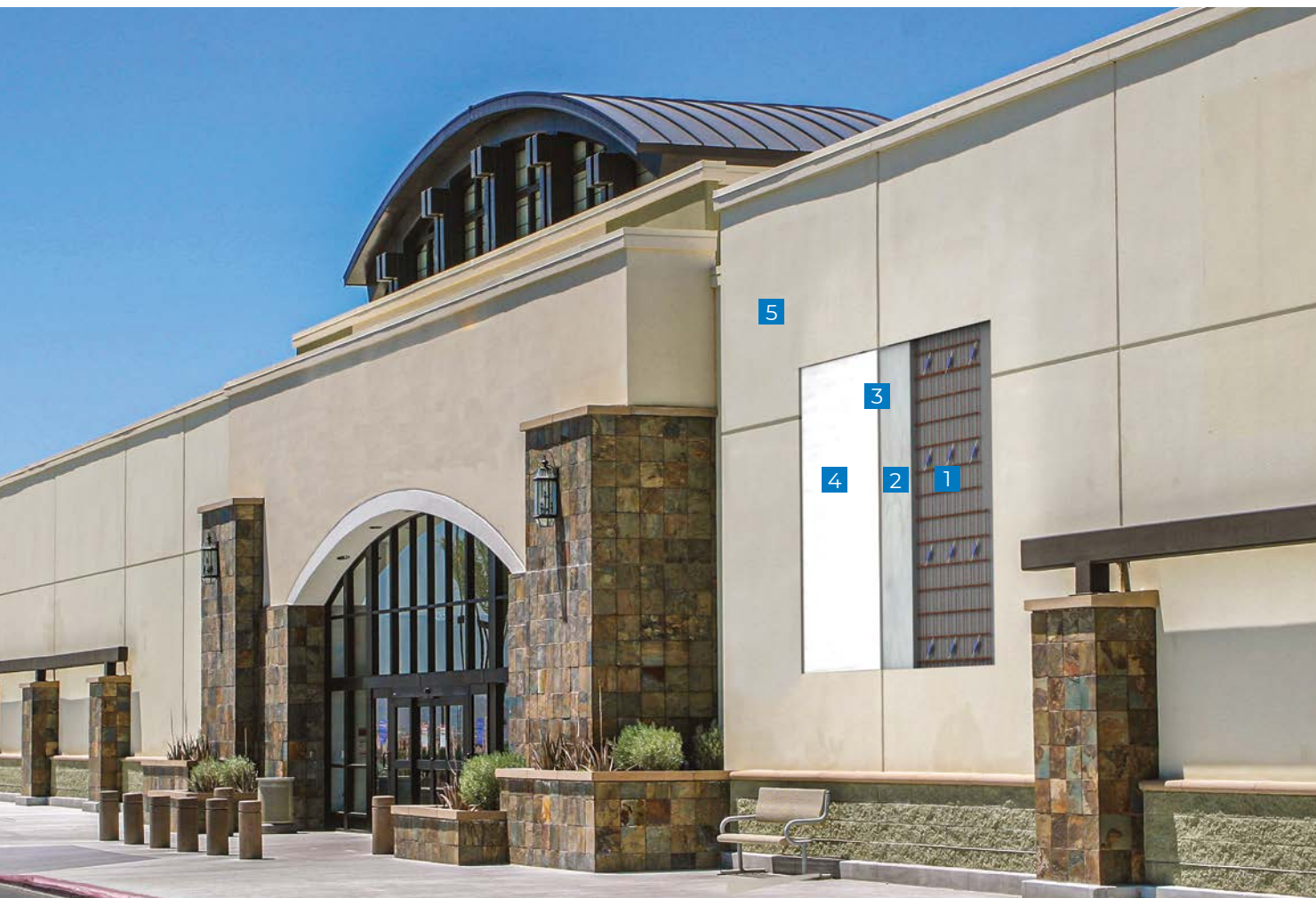
PROTECTIVE AND
DECORATIVE ACRYLIC
COATINGS

Exterior facades face many challenges. They are subjected to intense sunlight, temperature variations, carbon dioxide, water, salt and wind. MAPEI's *Elastocolor* products are designed to address these conditions in an unlimited array of colors.

Issue: Need for an attractive, durable exterior coating that seals out water/salt and is easy to clean

Solution: A system that is formulated to seal, protect and beautify

- 1 *Mapeshield I*
- 2 *Planitop XS* (or *Planitop 12 SR*)
- 3 *Mapectex P1 FT*
- 4 *Elastocolor Primer AR*
- 5 *Elastocolor Coat*



Parking decks and other exterior, pedestrian and vehicular traffic areas require rugged products developed specifically for the unique conditions that they experience. MAPEI's *Mapecfloor* family of products is engineered for parking decks and the demands of their installations.

Issues: Wheel traffic; low-speed turns

Solution: A highly bonded system of products protecting the substrate and resisting the force of rolling loads and turns

- 1 Existing concrete
- 2 *Mapecfloor PU Primer* or *Primer SN*
- 3 *Mapecfloor PU 400 FC*
- 4 *Mapecfloor Finish 415 NA*
- 5 *Mapecfloor Finish 450*

INTERIOR

PARKING DECK

SYSTEM FOR HEAVY-DUTY VEHICULAR TRAFFIC



INTERIOR

FLOORS

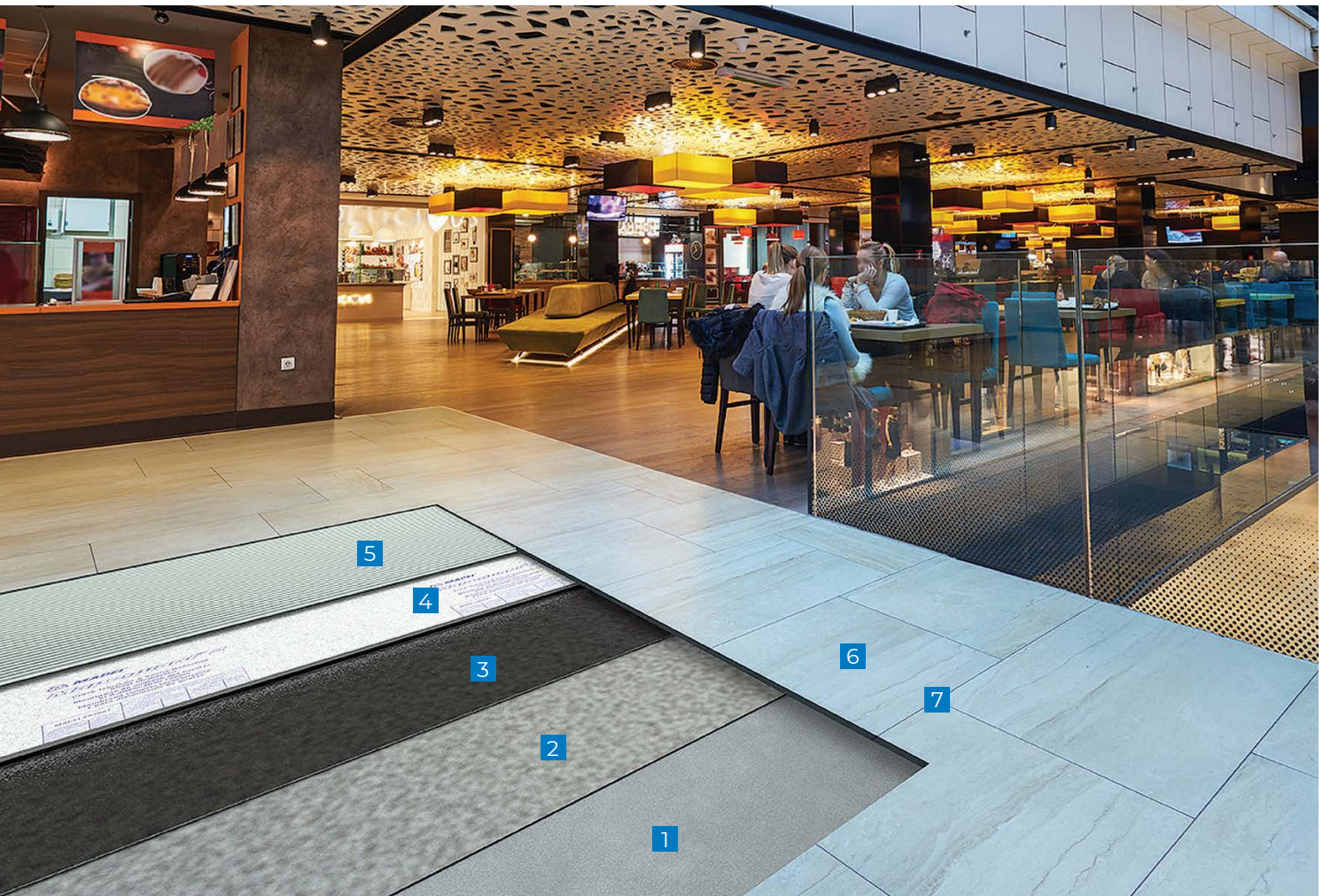
CERAMIC TILE
OR STONE

Tile and stone are synonymous with flooring in shopping malls and other enclosed areas subject to heavy foot traffic. Today's tile can mimic the look of stone, wood and even fabric with remarkable precision. The installation products selected determine how soon the floor can be returned to service and how long it will hold up.

Issue: Flexibility, pivot area, high traffic, pallet jacks

Solution: Because there are multiple methods, contact MAPEI's Technical Services Department for guidance.

- 1 Concrete
- 2 *Mapecem Quickpatch*
- 3 *MAPEI SM Primer*
- 4 *Mapeguard 2*
- 5 *Keraflex Super*
- 6 Ceramic tile or stone
- 7 *MAPEI Flexcolor CQ*



INTERIOR

RETAIL COMMON SPACES

LUXURY VINYL PLANK/TILE

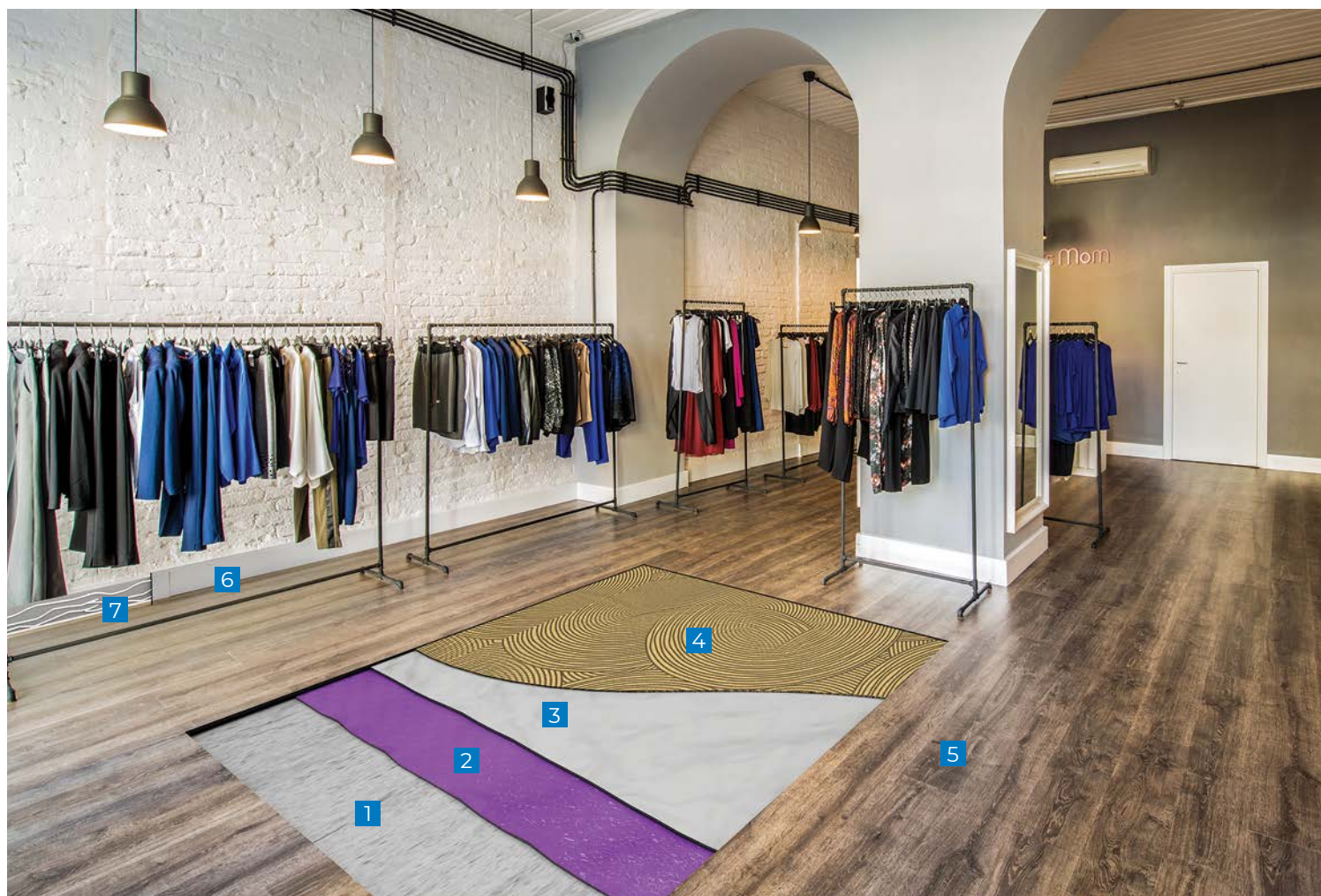
Luxury vinyl tile (LVT) and luxury vinyl plank (LVP) are increasingly being found in retail settings as retailers search for a high-end look to set them apart from the competition. MAPEI's installation products maximize the chances for a successful installation over a variety of substrates.

Issue: Dimensional stability of vinyl planks and tiles

Solutions: *Ultrabond ECO 360* and *Ultrabond ECO 373*, which provide superior "hold" for these products

- 1 Concrete
- 2 *Primer T*
- 3 *Ultraplan 1 Plus*
- 4 *Ultrabond ECO 360* or *Ultrabond ECO 373*
- 5 Luxury vinyl plank
- 6 Cove base
- 7 *Ultrabond ECO 575*

For installations over concrete with moisture issues, refer to the section on high moisture on Page 23.



INTERIOR

ELEVATOR CAB FLOOR

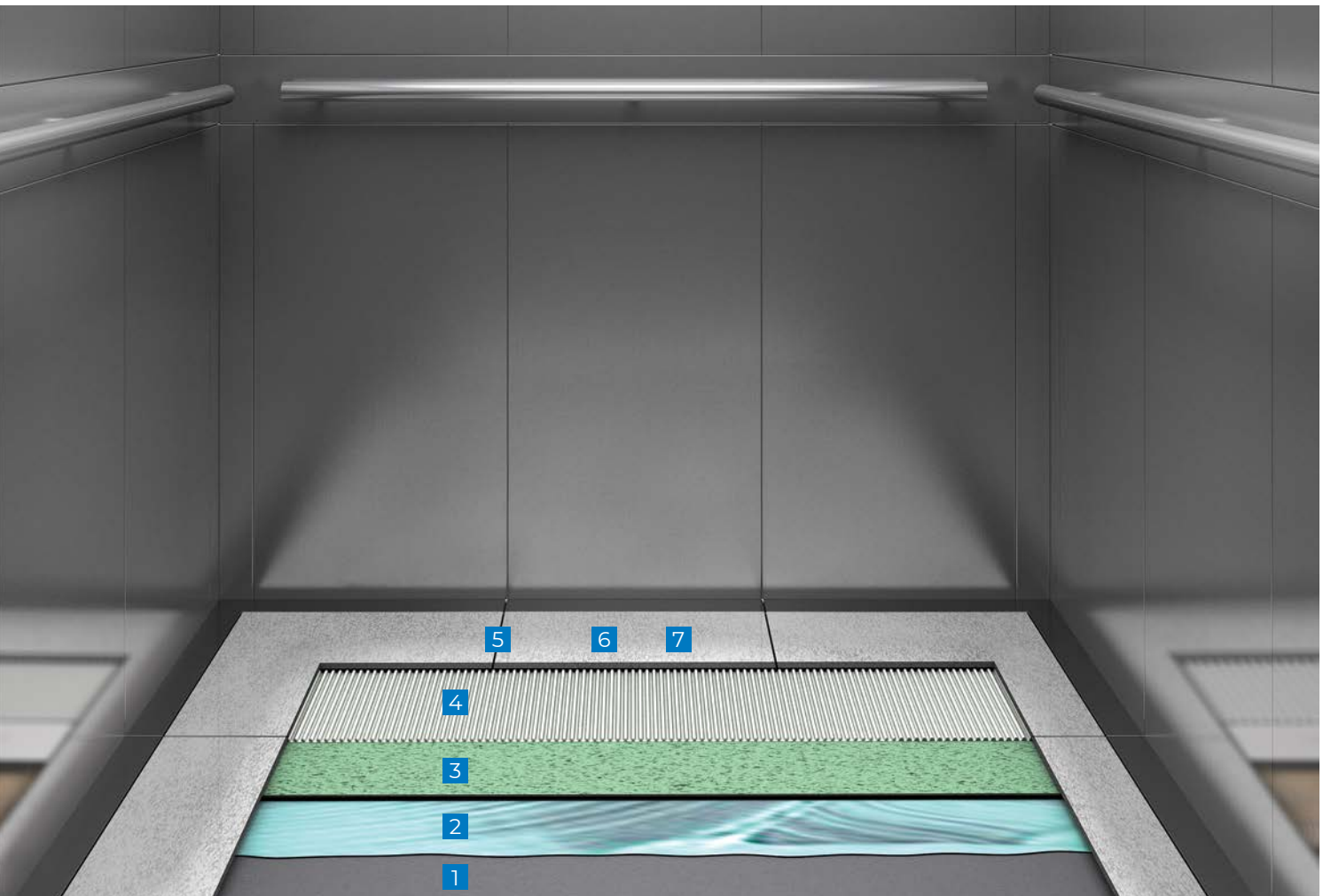
TILE OR STONE
OVER STEEL

Often an elevator provides a first impression as customers move from a parking garage to a mall or restaurant. Using beautiful, durable stone or tile in the elevators will enhance the effect of luxury long before one experiences the main event.

Issues: Flexibility; pivot areas; high traffic

Solutions: Materials suitable for substrates that experience deflection. Because there are multiple methods, contact MAPEI's Technical Services Department for guidance.

- 1 Steel
- 2 *MAPEI HM Primer*
- 3 *Mapeguard CI* (or *Mapeguard 2*)
- 4 *Ultraflex LFT*
- 5 Tile or stone
- 6 *MAPEI Flexcolor CQ*
- 7 *UltraCare Penetrating Plus SB Stone & Porcelain Tile Sealer*



INTERIOR

RETAIL SPACES

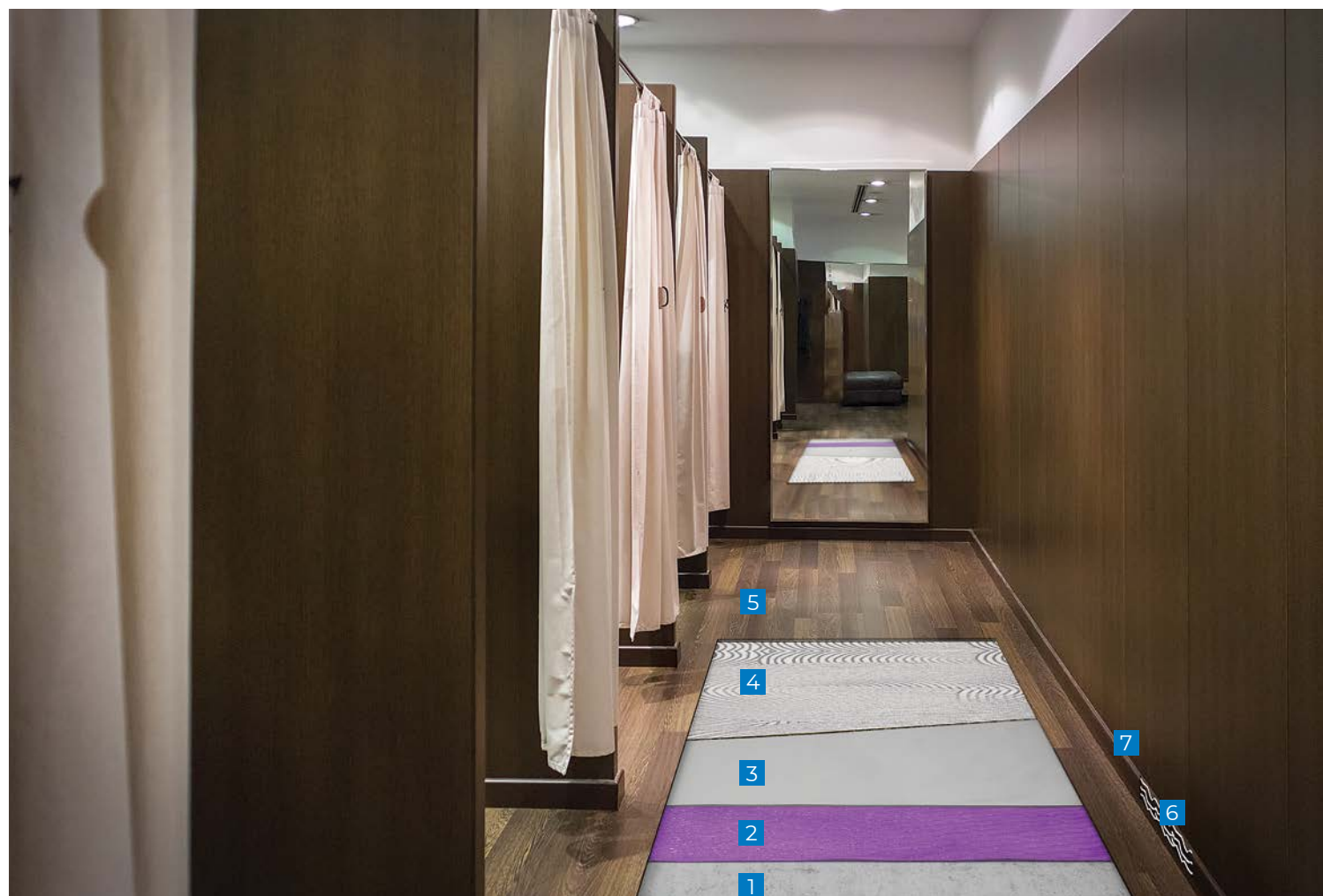
HOMOGENEOUS/
HETEROGENEOUS
SHEET VINYL

Sheet vinyl is often found in retail settings due to the myriad of design choices and the ease of maintenance. Attention to the installation materials selected will minimize issues such as indents and tears that can be associated with heavy traffic and sheet vinyl flooring.

Issue: Shopping carts with wheels that swivel and rock in a small area

Solutions: *Ultrabond ECO 360* resists indentation from heavy rolling loads.

- 1 Concrete
- 2 *Primer T*
- 3 *Ultraplan M20 Plus*
- 4 *Ultrabond ECO 360*
- 5 Sheet vinyl
- 6 Cove base
- 7 *Ultrabond ECO 575*



INTERIOR

RETAIL/ RESTAURANT

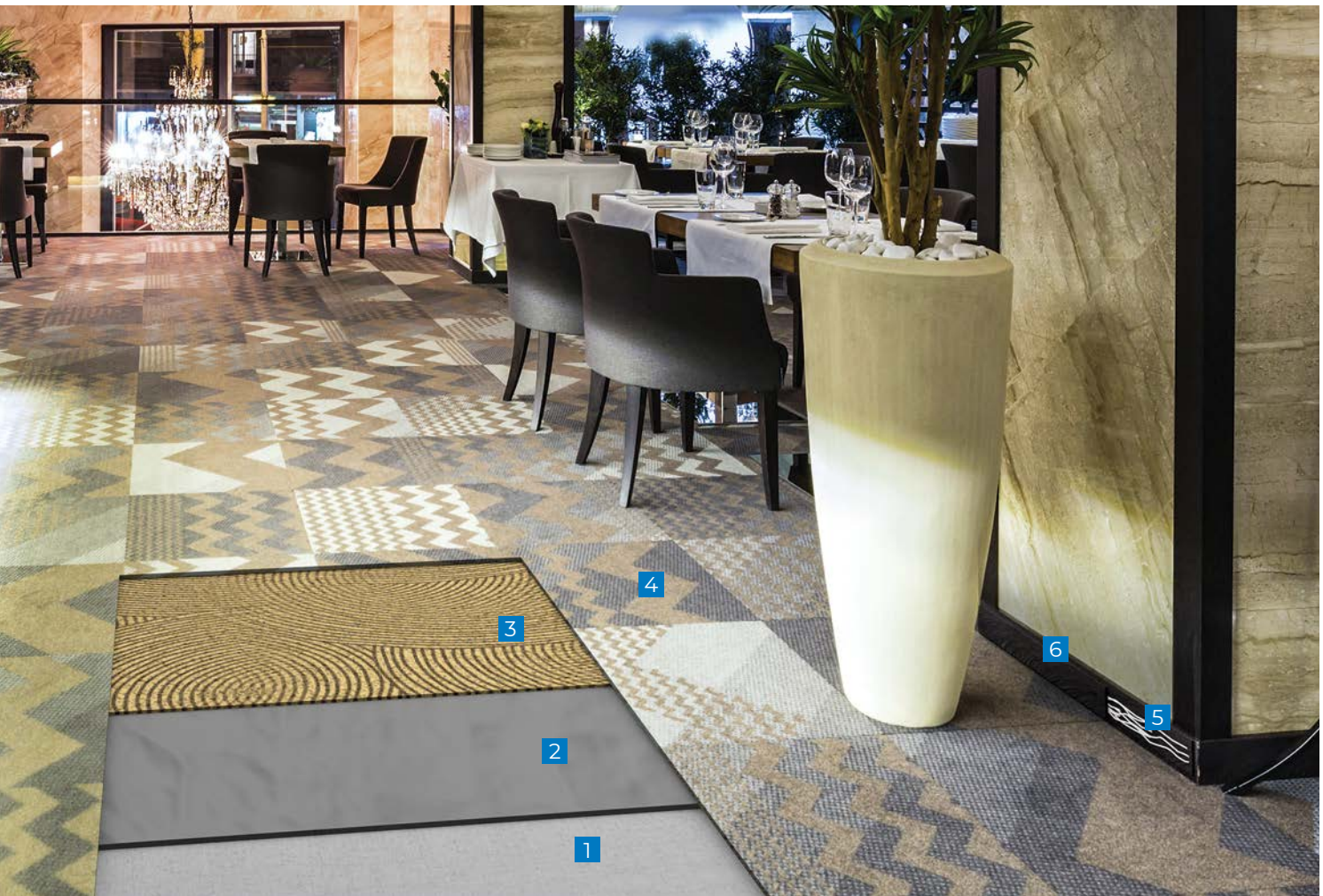
BROADLOOM CARPET

Heavy-traffic areas are where the majority of the traffic will be moving along a set path, time after time. The materials used to flatten and adhere these areas must be designed with a high compressive strength and stay where they are placed, even under heavy traffic conditions.

Issues: Substrates must receive a thin layer of patch or skimcoat that is up to the challenge of heavy foot and cart traffic, plus carpet cleaning schedules.

Solution: A high-quality patching product for high-traffic areas

- 1 Concrete
- 2 *Planiprep SC* or *Planipatch*
- 3 *Ultrabond ECO 220*
- 4 Broadloom carpet
- 5 *Ultrabond ECO 575*
- 6 Vinyl or rubber cove base



Food preparation areas must be extremely resistant to a wide variety of compounds, from food debris to hot oils to sanitizing solutions. The mortars and grouts found in these areas must be up to the environmental conditions of a commercial kitchen.

Issues: High heat, excessive water, grease, and harsh cleaning chemicals.

Solution: An industrial-grade, chemical- and heat-resistant grout

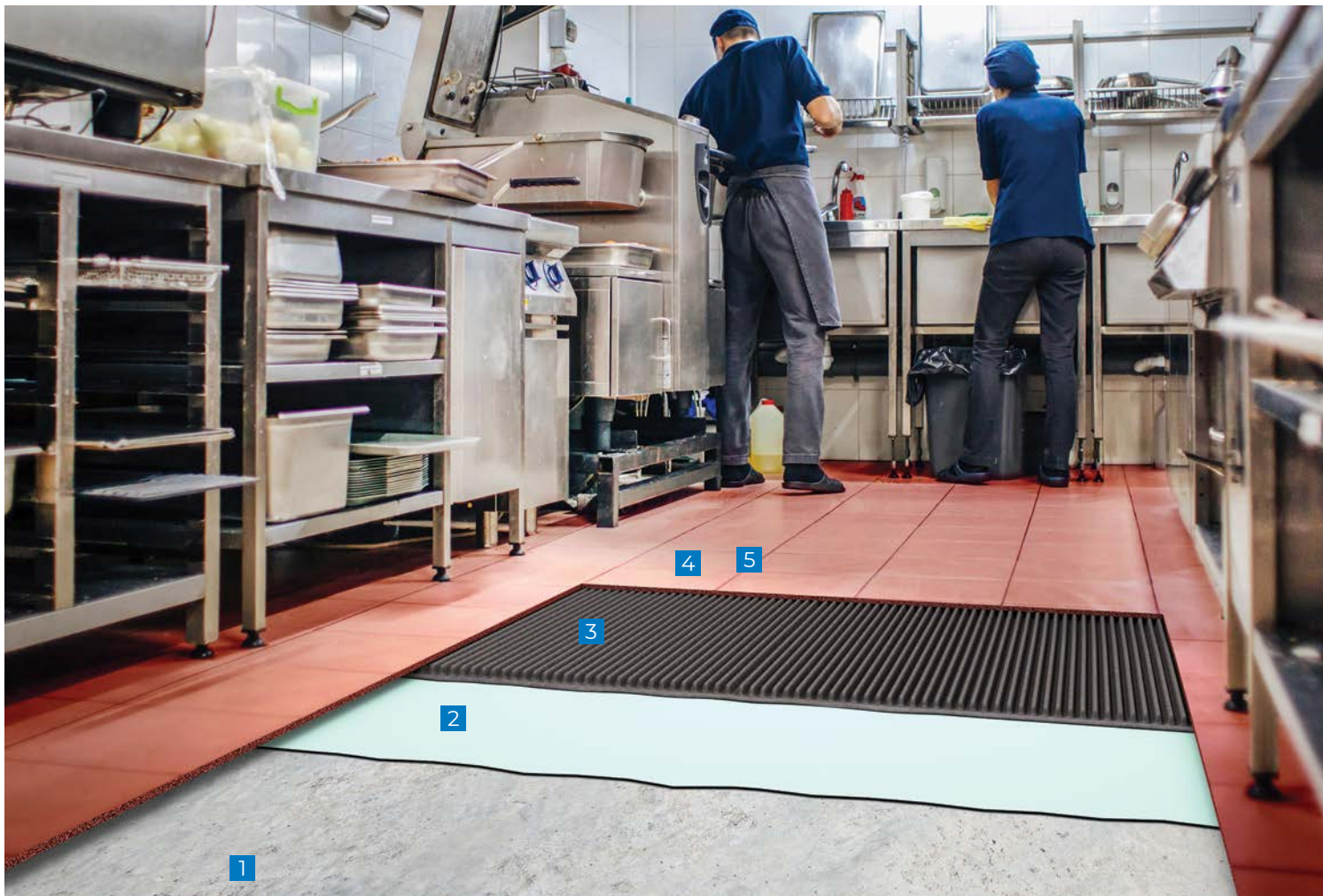
- 1 Concrete
- 2 *Mapelastic AquaDefense*
- 3 *Kerabond/Keralastic System* or (for rapid-setting) *Granirapid System*
- 4 Quarry tile
- 5 *Kerapoxy IEG CQ*

For installations over concrete with moisture issues, refer to the section on high moisture on Page 23.

INTERIOR

BACK KITCHEN
RESTAURANT /
FOOD COURT

QUARRY TILE



INTERIOR

RETAIL SALES AREA / RESTAURANT

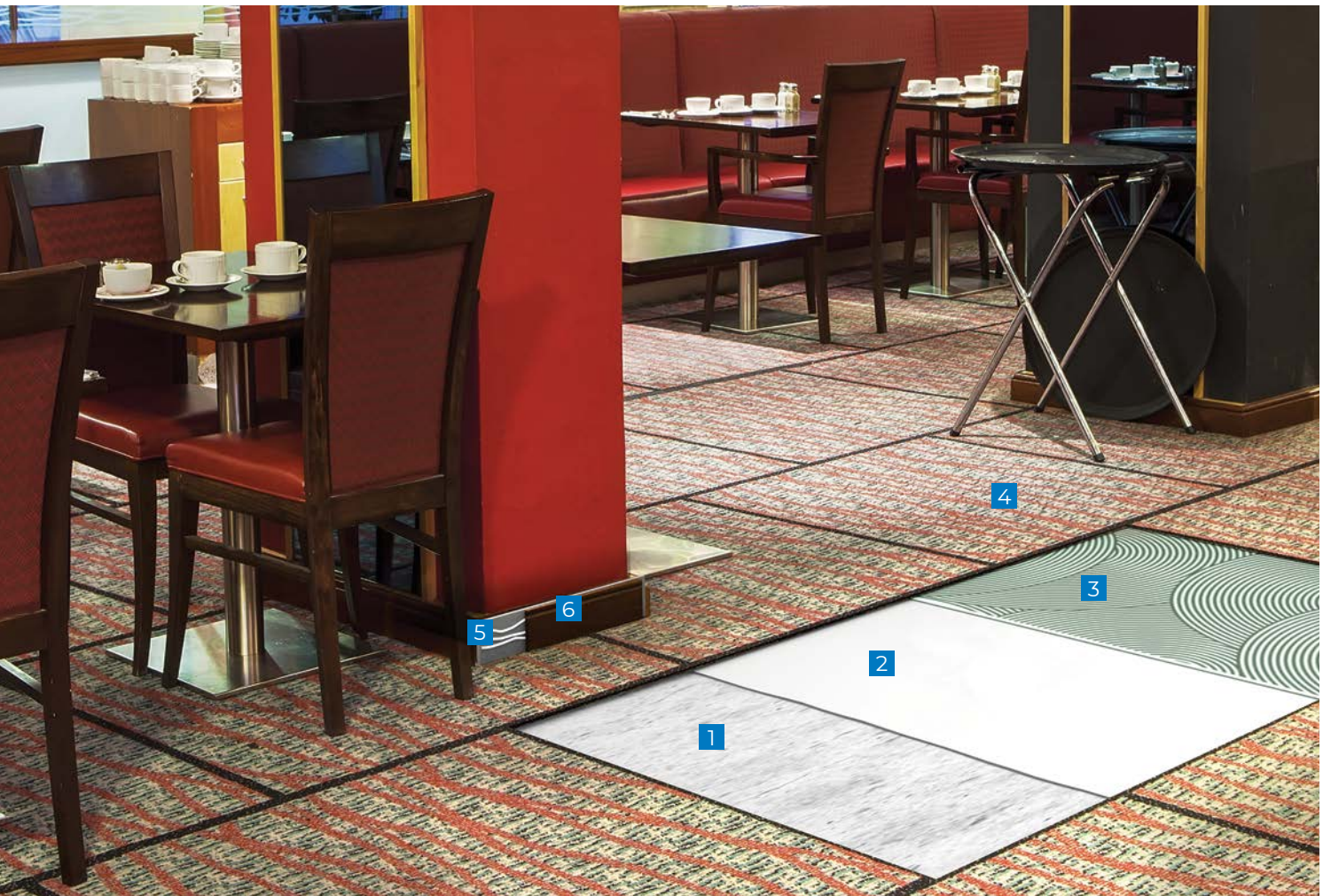
CARPET TILES

Carpet tiles are another common finish for retail sales areas and cafeteria settings because of the wide range of colors and patterns available that can match the retail environment. However, table and chair legs can test the substrate with point loads, and often there is a time crunch to get these finishes in place quickly. MAPEI products offer time- and stress-reducing options. Plus, our releasable adhesives allow for quick repair of the stained tiles only.

Issues: Point loads requiring high compressive strength; short installation times

Solutions: Rapid-setting materials and fast-track installation methods

- 1 Concrete
- 2 *Planiprep SC* or *Planipatch*
- 3 *Ultrabond ECO 811*
- 4 Carpet tile
- 5 *Ultrabond ECO 575*
- 6 Vinyl or rubber cove base



Finished concrete looks are a significant trend for retail spaces. While polishing existing concrete can be an option, existing concrete may not always be up to the task. Products such as *Ultratop SP* provide a fast, effective solution for polished concrete looks over less than perfect substrates.

Issues: Soft, damaged or uneven concrete

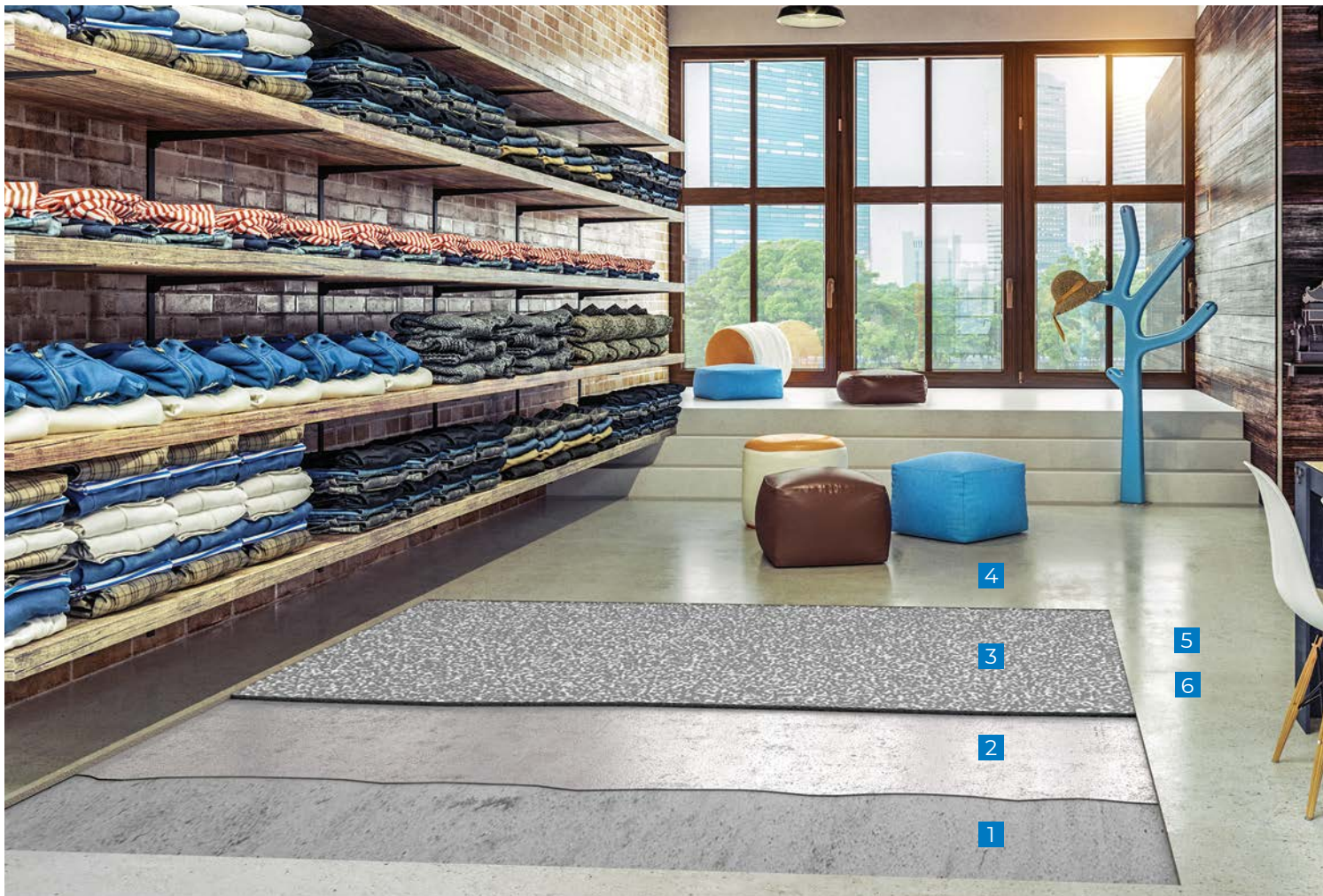
Solutions: High-quality, compatible products from a single source for decorative topping

- 1 Concrete subfloor
- 2 *Primer SN*
- 3 Sand broadcast
- 4 *Ultratop SP*
- 5 *Mapecrete Hard LI*
- 6 *Mapecrete Protector FF*, *Mapefloor Finish 630* or *Mapefloor Finish 58 W*

INTERIOR

RETAIL SPACES / RESTAURANT AREAS

DECORATIVE
CONCRETE



INTERIOR

WALL/FLOOR WITH GAUGED PORCELAIN TILE PANELS

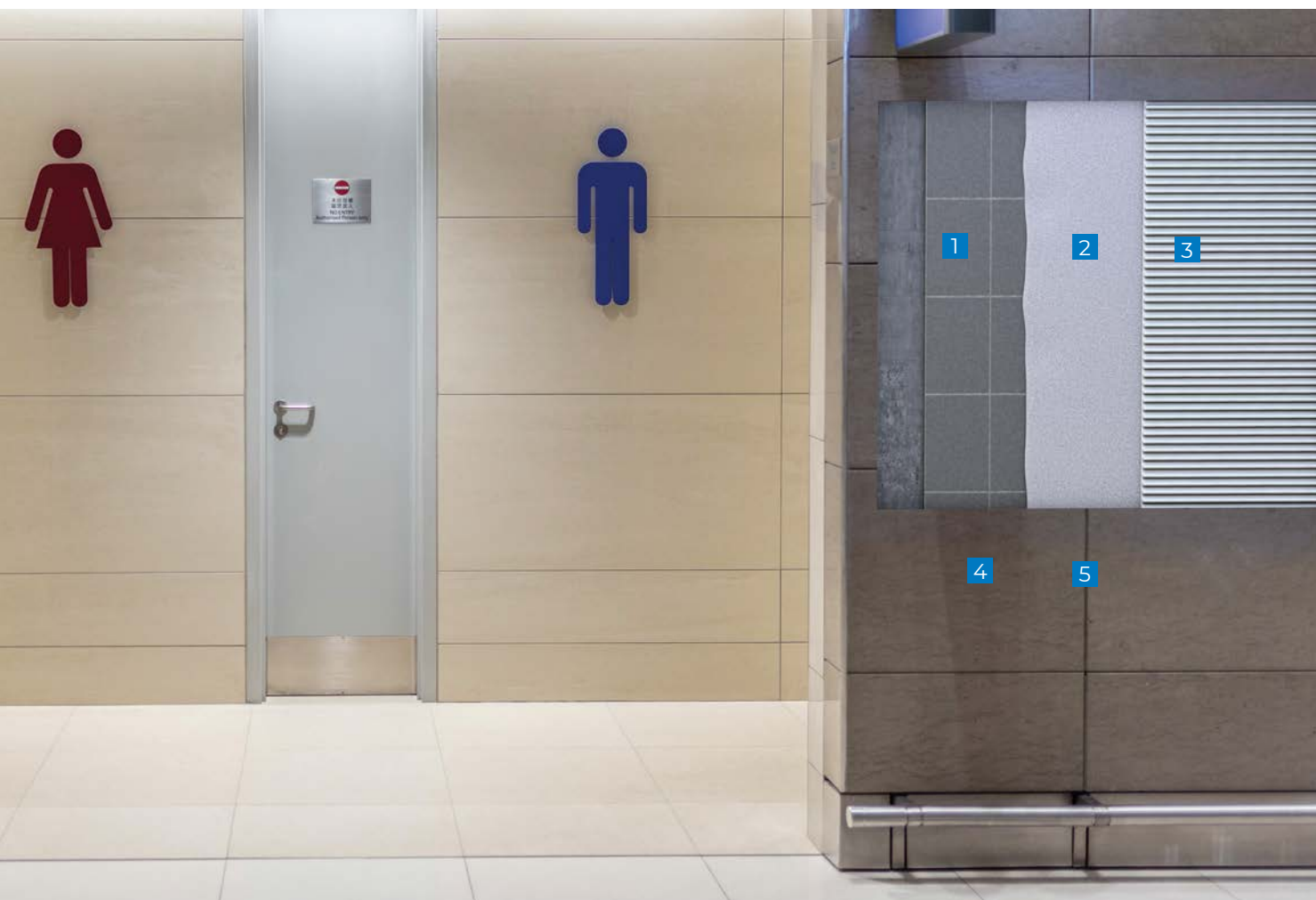
TILE OVER TILE

Renovations to dated walls and floors can lead to significant downtime. If the change is purely cosmetic and the existing substrate is sound, a tile-over-tile installation with gauged porcelain tiles can be a cost-saving and time-saving alternative. *MAPEI Ultralite S2* thin-tile mortar is the first mortar on the market designed specifically for the challenges of these large tile panels.

Issue: Dated tile or stone; cost of removal

Solution: Tile-over-tile installation with full support of gauged porcelain tiles.

- 1 Existing tile
- 2 *ECO Prim Grip*
- 3 *MAPEI Ultralite S2*
- 4 Gauged porcelain tile panels
- 5 *MAPEI Flexcolor CQ*



*To obtain this look, a stain was also applied.

Transporting merchandise, supplies and maintenance materials can cause significant damage to floors. A tough, durable rubber floor requires the same performance in the installation materials.

Issues: Adhering to steel; high traffic

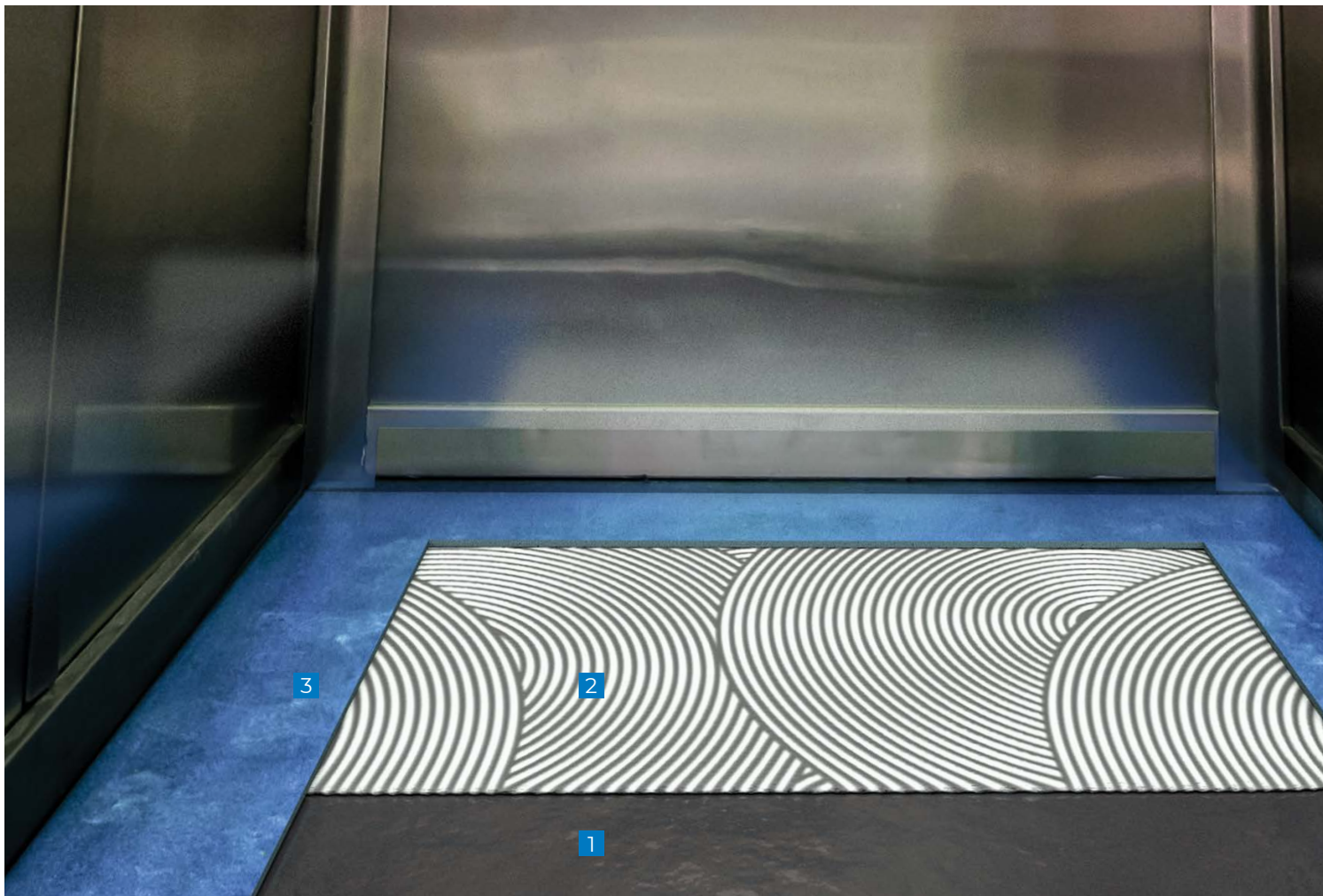
Solution: Adhesive with a durable bond to rubber over steel substrates

- 1 Steel
- 2 *Ultrabond G21*
- 3 Virgin rubber sheet or tile

INTERIOR

SERVICE AND MAINTENANCE AREAS

RUBBER OVER STEEL



INTERIOR

SERVICE AND MAINTENANCE AREAS

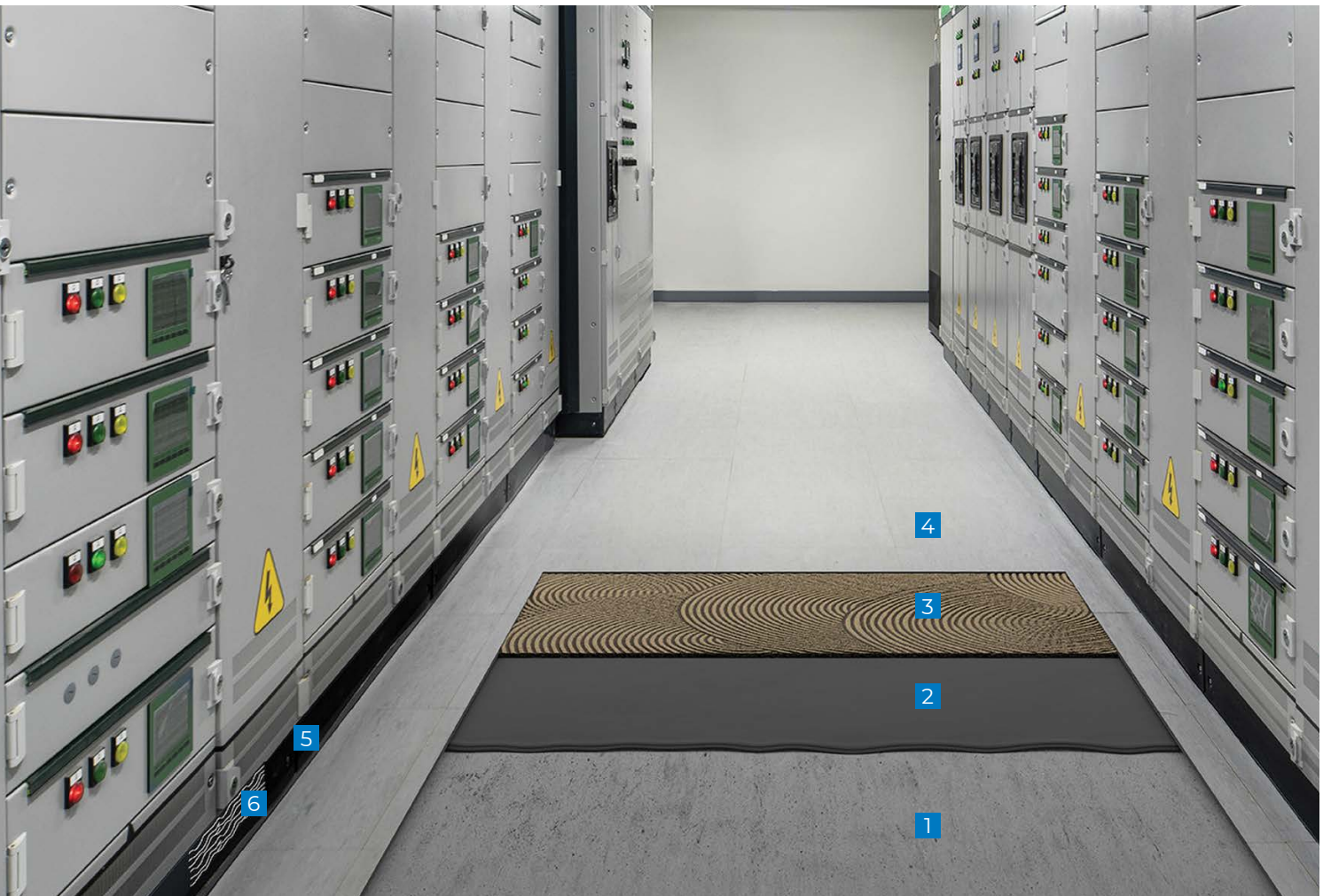
VINYL COMPOSITION
TILE (VCT)

Maintenance and access areas are often finished with vinyl composition tile as a cost-effective solution to a durable, cleanable floor. VCT benefits from installation products that are as easy to replace as the tiles, which is perfect for MAPEI's *Ultrabond ECO 711*.

Issues: Heavy rolling loads; damage from heavy equipment; traditional "wax and strip" methods of maintenance

Solution: A durable adhesive that still allows for single tile replacement

- 1 Concrete
- 2 *Planiprep SC* or *Planipatch*
- 3 *Ultrabond ECO 711*
- 4 Vinyl composition tile (VCT)
- 5 *Ultrabond ECO 575*
- 6 Vinyl or rubber cove base



Retail areas are typically built with slab-on-grade techniques that can come with moisture issues. Concrete alone is not enough to stop water from pushing up under the flooring. MAPEI's epoxy moisture barriers can save the day... and the floor.

Issues: Controlling moisture coming up through the slab that will affect moisture sensitive finishes. Self-leveling underlayment for substrates out of industry tolerance.

Solutions: Moisture barriers with a moisture-resistant self-leveling underlayment

- 1 Concrete (CSP of #2 to #3)
- 2 *Planiseal VS* or *Planiseal VS Fast*
- 3 *Primer X*
- 4 *Ultraplan Extreme 2*
- 5 *Ultrabond G21*
- 6 Moisture-sensitive flooring

INTERIOR

HIGH-MOISTURE AREAS

EPOXY MOISTURE BARRIERS



INTERIOR

FAST-TRACK INSTALLATIONS ON GREEN CONCRETE

HIGH-MOISTURE AREAS

Fast-track installations have pushed the leveling of slabs earlier and earlier in the life cycle of the concrete. For installations in as little as 7 days over slabs where the moisture is still high, MAPEI's epoxy moisture barriers are just the thing. As an added benefit, the moisture barrier also keeps the concrete from drying out too quickly.

Issues: Fast-track installations over green concrete

Solutions: *Planiseal VS* or *Planiseal VS Fast*

- 1 Concrete (with a CSP of #2 to #3)
- 2 *Planiseal VS* (or *Planiseal VS Fast*)
- 3 *Primer X*
- 4 *Novoplan HFL*
- 5 Appropriate adhesive based on the flooring type
- 6 Moisture-sensitive flooring



Building a SUSTAINABLE future together



more sustainable for the
PLANET



more sustainable in
PROJECTS



— MAPEI USA • MAPEI Caribe —



ECO Prim Grip™

Multipurpose, Bond-Promoting Primer

ECO Prim Grip is a ready-to-use, low-VOC, synthetic resin-based primer with bond-promoting silica aggregates suspended in a dispersion. It enhances the performance and adhesion of mortars to existing ceramics and difficult-to-bond-to substrates. Plus, it improves bonding of self-leveling underlayments (SLUs) and bonds of render coats over cementitious substrates. Suitable for a wide variety of substrates, *ECO Prim Grip* combines excellent versatility with an easy, low-odor application.

Elastocolor® Coat

Water-Based, High-Build, 100%-Acrylic, Waterproof Coating

Elastocolor Coat is a water-based, high-build, 100%-acrylic coating designed to protect and decorate above-grade, exterior/interior vertical concrete, masonry, stucco, fiber-reinforced polymer (FRP) composites and EIFS systems. *Elastocolor Coat* is available in two textures (smooth and fine), in a wide range of standard colors and in an unlimited number of custom colors to increase its design versatility.

Elastocolor® Primer AR

Water-Based, Alkali-Resistant Primer for Elastocolor Coatings

Elastocolor Primer AR is a specially designed primer for use on exterior, above-grade, new and previously coated concrete and masonry surfaces. *Elastocolor Primer AR* will protect subsequent coatings from the damaging effects of high pH present in freshly placed cement-based products. It remains highly flexible, offers excellent filling and adhesion on prepared substrates, and is designed for compatibility with MAPEI's *Elastocolor* coating systems.

Granirapid® System

Premium, Rapid-Setting, Flexible Tile Mortar

Granirapid is the industry's first and most flexible, high-performance, fast-curing mortar system geared for fast-track projects. It develops high, early mechanical strength and can be specified for the most demanding tile applications. Thanks to MAPEI's High-Hydrated Cement Technology (HCT™), *Granirapid* offers superior drying-out characteristics for quick curing and does not contribute to efflorescence. When installed in conjunction with *Ultracolor® Plus FA* grout, *Granirapid* will allow water submersion in only 72 hours.

Kerabond/Keralastic™ System

Premium, Flexible Tile Mortar

Kerabond/Keralastic System is a high-performance, two-part system: *Keralastic®*, a second-generation "flexible" acrylic latex additive, is used to enhance the performance of *Kerabond®*, which is a premium-grade dry-set mortar. This system has exceptional bond strength, flexural strength, elongation and freeze/thaw durability. To ensure proper flexibility, always use a latex additive

when applying a dry-set mortar over plywood or to set nonvitreous tiles.

Keraflex™ Super

Premium, Extra Smooth, Large-and-Heavy-Tile Mortar with Polymer

Keraflex Super is a highly versatile, non-sag/nonslump, large-and-heavy-tile mortar and thin-set mortar for tile and stone for installations on floors, walls and countertops. This polymer-modified mortar has a high content of a unique dry polymer, resulting in excellent adhesion to the substrate and tile, with enhanced resistance to freeze/thaw environments. It is formulated with Easy Glide Technology™ for ease of application and with a consistency that allows adjustability when used with lippage control systems. *Keraflex Super* can also be used as a mortar over uncoupling, crack-isolation, sound-reduction and waterproofing membranes.

Kerapoxy® CQ

Premium, Epoxy Grout and Mortar with Color-Coated Quartz

Kerapoxy CQ is an improved, two-component, 100%-solids, epoxy grout and mortar that is non-sagging/nonslumping in joints up to 3/8" (10 mm) in width, water-cleanable and easy to apply. *Kerapoxy CQ* uses a proprietary aggregate to achieve its durable color, making it excellent for countertops, high-traffic areas, and areas needing stain and chemical resistance. Easy to maintain, *Kerapoxy CQ* will clean to the original color and contains BioBlock® technology to help protect against mold and mildew.

Kerapoxy® IEG CQ

100%-Solids, Industrial-Grade, Epoxy Grout with Color-Coated Quartz

Kerapoxy IEG CQ is a water-cleanable, 100%-solids, epoxy grout with high chemical and stain resistance. It is a nonshrinking, non-sagging, fast-curing, efflorescence-free grout. Color-coated quartz dramatically improves its cleanability, so that *Kerapoxy IEG CQ* leaves very little film residue during cleanup of excess grout with a grout float. The color-coated quartz also eliminates pigment bleed, so tiles are not stained during installation.

This grout is perfectly suited for use in commercial kitchens, meat packing houses, and any commercial and institutional floors that require daily cleaning with enzymatic cleaners. *Kerapoxy IEG CQ* is ideal for applications where high-strength, mold- and mildew-resistant grout joints are required. In addition, it has high temperature resistance and can be steam-cleaned.

Mapebond™ 710

Low-VOC, Solvent-Based Contact Adhesive

Mapebond 710 is a low-VOC, quick-drying, solvent-based, high-tack contact adhesive. It is specifically formulated to promote maximum adhesion of MAPEI waterproofing membranes to various substrates.

Mapebond™ 720

Water-Based Contact Adhesive

Mapebond 720 is a quick-drying, water-based, high-tack contact adhesive. It is specifically formulated to promote maximum adhesion of MAPEI waterproofing membranes to various substrates.

Mapecem® Quickpatch

High-Performance Concrete Patch

Mapecem Quickpatch is a high-performance, fast-setting, cementitious material used for the patching of concrete surfaces.

Mapecrete™ Hard LI

Lithium Silicate Densifier and Sealer for Concrete

Mapecrete Hard LI is a water-based, VOC-free, lithium silicate solution used to densify, seal and dustproof horizontal, hard-troweled concrete surfaces. It penetrates the concrete surface, chemically reacts with the free lime and produces a dense, hard matrix within the concrete and a more durable surface on top.

Mapecrete™ Protector FF

High-Gloss, Film-Forming Protective Coating for Concrete

Mapecrete Protector FF is a film-forming, high-gloss protective coating designed to increase the stain resistance of interior, polished or hard-troweled concrete floors

Mapedrain™ 25

High-Strength, High-Flow, Prefabricated Drainage Composite with Protective Film

Mapedrain 25 is a high-strength, three-dimensional drainage composite. It consists of a nonwoven filter fabric bonded to individual dimples of the molded polypropylene core, minimizing fabric intrusion into the drainage channels caused by overburden pressure. The filter fabric allows water to pass freely into the drainage core, which provides hydrostatic relief while preventing the passage of soil or sand particles which might clog the core. *Mapedrain 25* also has a polymeric protective film on the back side to provide additional protection to waterproofing membranes.

Mapedrain™ TD Drainage Composite

High-Strength, High-Flow Drainage Composite for Foundations

Mapedrain TD Drainage Composite is a high-strength, three-dimensional modular drainage and collection composite for foundations. It consists of a nonwoven filter fabric that is bonded to and wrapped around a molded polypropylene core, minimizing fabric intrusion into the drainage channels that are caused by overburden pressure. The filter fabric allows water to pass freely into the drainage core, which provides hydrostatic relief while preventing the passage of soil or sand particles that

might clog the core. *Mapedrain TD Drainage Composite* is designed to replace a conventional gravel-covered pipe drain.

Mapedrain™ TD Fittings

Fittings for Installing Mapedrain TD Drainage Composite

Mapedrain TD Fittings consist of end outlet, side outlet, splice and corner fittings that are made out of polyethylene and assist in installing *Mapedrain TD Drainage Composite*. The end outlet fitting connects the end of *Mapedrain TD Drainage Composite* to a 4" (10 cm) corrugated pipe. The side outlet fitting connects the side of *Mapedrain TD Drainage Composite* to a 4" (10 cm) corrugated pipe. The splice fitting connects two pieces of *Mapedrain TD Drainage Composite* end to end. And the corner fitting connects two pieces of *Mapedrain TD Drainage Composite* together at the inside or outside corners of a building.

Mapeflex® P1 FT

One-Component, Non-Sag, Elastomeric Polyurethane Sealant

Mapeflex P1 FT is a high-performance, one-component, fast-track, elastomeric, moisture-cured, polyurethane sealant and adhesive. *Mapeflex P1 FT* offers excellent adhesion to most surfaces, superior gunning and tooling, and excellent flexibility for moving joints.

Mapeflex® P2 NS

Two-Component, Non-Sag, Polyurethane Sealant

Mapeflex P2 NS is a two-component, non-sag, polyurethane sealant that meets the requirements of ASTM C920.

Mapecfloor™ Finish 415 NA

Two-Component, Polyurethane Topcoat for Mapecfloor Parking Deck System

Mapecfloor Finish 415 NA is a two-component, solvent-free, aromatic polyurethane topcoat specifically designed to provide a protective wear coat for elevated concrete surfaces where the *Mapecfloor* parking deck system is utilized.

Mapecfloor™ Finish 450

Two-Component, Aliphatic, Polyurethane Topcoat

Mapecfloor Finish 450 is a two-component, solvent-free, aliphatic, polyurethane topcoat specifically designed to provide a protective wear coat for elevated concrete surfaces in areas that are exposed to direct sunlight.

Mapecfloor™ Finish 58 W

Two-Component, Clear, Matte, Aliphatic Polyurethane Coating

Mapecfloor Finish 58 W is a two-component, aliphatic polyurethane coating in water dispersion with a matte finish that is clear or colored. *Mapecfloor Finish 58 W*

provides a high-performance finish on general-service resinous flooring products and *Ultratop*® systems.

Mapecfloor™ Finish 630

Two-Component, Clear Protective Acrylic Coating for Floors

Mapecfloor Finish 630 is a two-component, protective, acrylic filming agent in a water dispersion for floors made from concrete and *Ultratop*® systems. *Mapecfloor Finish 630* provides a high-performance finish on *Ultratop* systems.

Mapecfloor™ PU 400 FC

Two-Component, Fast-Curing, Polyurethane Basecoat for *Mapecfloor* Parking Deck System

Mapecfloor PU 400 FC is a two-component, fast-curing, polyurethane basecoat specifically designed for use as a waterproofing membrane for elevated concrete surfaces where the *Mapecfloor* parking deck system is utilized. With its high elongation and crack-bridging properties, *Mapecfloor PU 400 FC* is suited as a basecoat layer on concrete substrates subject to vibration.

Mapecfloor™ PU Primer

Two-Component Polyurethane Primer

Mapecfloor PU Primer is a two-component, polyurethane-based primer that can be used for initial application of *Mapecfloor* parking deck systems or as a recoat primer for already installed polyurethane deck systems.

Mapeguard® 2

3-in-1 Membrane for Crack Isolation, Waterproofing and Sound Reduction

Mapeguard 2 is a next-generation, flexible, thin, 40-mil (1-mm) lightweight, load-bearing, fabric-reinforced “peel-and-stick” crack-isolation, waterproofing and vapor-control membrane. *Mapeguard 2* helps to prevent existing or future in-plane floor cracks (with movement up to 3/8” [10 mm] wide) from transmitting through grout, ceramic tile and natural stone. It also reduces the transmission of impact sound (footsteps, dropped objects, etc.) and airborne sound (voice, TV, etc.) through floors when installed under ceramic tile, stone or wood floor coverings.

Mapeguard® CI

Peel-and-Stick, Crack-Isolation Sheet Membrane for Tile Installations

Mapeguard CI is a flexible, thin (1/16” or 1.5 mm), lightweight, load-bearing, fabric-reinforced, “peel-and-stick” crack-isolation membrane. After application, ceramic tile or stone can be installed immediately with approved polymer-modified cement-based mortar. *Mapeguard CI* helps to prevent existing or future in-plane floor cracks (with movement up to 3/8” or 10 mm wide) from transmitting through grout, ceramic tile or natural stone.

MAPEI Flexcolor® CQ

Ready-to-Use Grout with Color-Coated Quartz

MAPEI Flexcolor CQ is a professional-grade, ready-to-use specialty grout for precision commercial and residential installations with porcelain, ceramic and natural-stone tiles. *MAPEI Flexcolor CQ* can be used to grout interior/exterior tile, and its nonporous composition helps to prevent water-based stains by providing water repellency to the grout surface. *MAPEI Flexcolor CQ* is formulated with the latest innovation in quartz aggregate, which ensures color consistency, ease of cleanability and improved workability. In addition, this grout can be used on sensitive tile surfaces once tested, requires no sealer and cures naturally from evaporation of the low level of water in the formulation.

Comparison testing of *MAPEI Flexcolor CQ* versus traditional Portland-cement grout has verified that *MAPEI Flexcolor CQ* is 30% more cost-efficient (based on typical rates of installers) and requires 65% less time to install.

MAPEI HM Primer™

Water-Based, Interior/Exterior Primer for Sheet Membranes

MAPEI HM Primer is a ready-to-use, low-VOC, water-based, quick-drying, high-tack membrane primer. It is specifically formulated to promote maximum adhesion of MAPEI peel-and-stick sheet membranes to high-moisture substrates.

MAPEI SM Primer™

Water-Based Primer for MAPEI Peel-and-Stick Membranes

MAPEI SM Primer is a ready-to-use, fast-drying, water-based, latex primer for use under MAPEI's peel-and-stick sheet membranes on residential and commercial indoor or outdoor floors. *MAPEI SM Primer* greatly increases the bond of MAPEI's peel-and-stick sheet membranes to concrete, plywood and other approved, properly prepared floors. It can be applied with a roller or brush, is white in color and dries clear.

MAPEI Ultralite® S2

Premium, Highly Deformable, Lightweight, Gauged-Tile Mortar with Polymer

MAPEI Ultralite S2 is a premium-grade, lightweight, single-component thin-set mortar that is ideal for installation of gauged (formerly “thin”) porcelain tile. This high-performance, highly deformable, polymer-modified mortar is formulated with Easy Glide Technology™ for ease of application. *MAPEI Ultralite S2* features a long open time and superior transfer properties to enhance back-buttering, and can be used also for ceramic tile and stone. *MAPEI Ultralite S2*'s unique Ultralite Technology™ provides twice the coverage of a standard thin-set mortar per pound/kg and may contribute to LEED points with 20% recycled content.

Mapelastic® 315

Professional, Cement-Based Waterproofing Membrane

Mapelastic 315 is a trowel-applied, flexible, fiber-mesh-reinforced waterproofing and crack-isolation membrane for installation under ceramic tile and stone on indoor/outdoor residential, commercial and industrial intermittent wet and submerged applications. *Mapelastic 315* provides an excellent barrier to prevent water from migrating into other areas. *Mapelastic 315* is compatible with any polymer-modified cement-based mortar (ANSI A118.4 or better) or epoxy mortar (ANSI A118.3). *Mapelastic 315* exceeds ANSI A118.10 requirements for waterproofing and is IAPMO-listed for use as a shower-pan liner.

Mapelastic® AquaDefense

Premium Waterproofing and Crack-Isolation Membrane

Mapelastic AquaDefense is a premixed, advanced liquid-rubber, extremely quick-drying waterproofing and crack-isolation membrane for installation under ceramic tile or stone in residential, commercial and industrial environments. *Mapelastic AquaDefense* provides a thin, continuous barrier to protect adjacent rooms and floors below from water damage. For common problem areas like coves, corners, cracks and drains, it can be combined with MAPEI's optional *Reinforcing Fabric* or *Mapeband™* accessories (cove roll and drain flash) to provide additional protection. *Mapelastic AquaDefense* dries after about 30 to 50 minutes and is then ready to receive any MAPEI polymer or epoxy mortar. *Mapelastic AquaDefense* can be flood-tested after 12 hours of drying time, is IAPMO-listed for use as a shower-pan liner, and exceeds ANSI A118.10 and ANSI A118.12 standards.

Mapelastic® Turbo

Premium, Rapid-Drying, Waterproofing and Crack-Isolation Membrane

Mapelastic Turbo is a two-component, rapid-drying, cementitious-binder-based membrane with fine-grained selected aggregates, special admixtures and synthetic polymers in water dispersion for interior and exterior installations under ceramic tile or stone in residential, commercial and industrial intermittent wet or submerged environments. Applied easily with a roller or brush, *Mapelastic Turbo* provides an excellent barrier to protect adjacent rooms and floors below from water damage. *Mapelastic Turbo* exceeds ANSI A118.10 and ANSI A118.12 standards and is compatible with polymer-modified cement-based mortars (ANSI A118.4 or better) or epoxy mortars (ANSI A118.3).

Mapeshield™ I

Pure Zinc Galvanic Anode

Mapeshield I is a pure zinc anode for cathodic protection of reinforcing steel against corrosion in new, reinforced structures as well as structures requiring repair.

Mapesil® T Plus

100%-Silicone Sealant with Enhanced Adhesion for Heavy Traffic and Expansion/Movement Joints

Mapesil T Plus is a professional-grade, 100%-silicone sealant with enhanced adhesion for use on multiple substrates. This product is specifically formulated for heavy traffic and expansion/movement joints exceeding both ASTM and ANSI standards.

Modified Mortar Bed

Polymer-Modified Thick-Bed and Render Mortar

Modified Mortar Bed is a pre-blended, cement-based, polymer-modified thick-bed and render mortar that includes a blend of select aggregates. Rather than requiring the use of a latex additive, it only needs mixing with water to produce a thick-bed mortar of exceptional strength.

Novoplan® HFL

High-Flow, Self-Leveling Compound

Novoplan HFL is a self-leveling, calcium-aluminate-based underlayment and repair mix for interior concrete and engineer-approved floors with high-flow characteristics.

Planipatch®

Fast-Setting, Polymer-Modified, Cement-Based Patching Compound

Planipatch is an ultra fast-drying, self-curing, polymer-modified, cement-based patching compound that rapidly develops high compressive strength. When *Planipatch* is mixed with *Planipatch Plus®*, the *Planipatch Plus System* can be used as an embossing leveler or as a patch to fill voids over properly prepared vinyl sheet goods, vinyl composition tile (VCT) and cement terrazzo before the direct glue-down installation of floor coverings.

Planiprep® SC

High-Performance, Fiber-Reinforced Skimcoating Compound

Planiprep SC is a high-performance, polymer-modified, fiber-reinforced, cement-based skimcoating and patching compound. Use *Planiprep SC* to skimcoat and smooth minor surface variations and defects on common substrates. *Planiprep SC* creates a strong, durable surface ready for almost any floor application. Its unique formulation mixes easily with water and produces an easy-to-apply patching compound. Rapid-setting *Planiprep SC* allows for fast-track flooring installations in 30 to 60 minutes after application, depending on thickness and environmental conditions.

Planiseal® Membrane SA

Self-Adhering Sheet Membrane

Planiseal Membrane SA is a 63-mil, self-adhering sheet membrane consisting of 61 mils of rubberized asphalt laminated to a 2-mil PET film. The combination of these two excellent waterproofing materials provides a durable,

high-performance waterproofing membrane. *Planiseal Membrane SA* is suitable for installations where the ambient and substrate temperatures are above 40°F (4°C).

Planiseal® VS

Alkali-Resistant, Epoxy Moisture-Reduction Barrier

Planiseal VS is an alkali-resistant, two-component, 100%-solids epoxy coating that effectively stops moisture-related problems with floor coverings. In addition, *Planiseal VS* expedites floor-covering installations by eliminating the traditional wait time required for new concrete slabs to reach moisture levels suitable for installations.

Planiseal® VS Fast

Fast-Track, Alkali-Resistant, Epoxy Moisture-Reduction Barrier

Planiseal VS Fast is a fast-curing, alkali-resistant, two-component, 100%-solids epoxy coating that effectively stops moisture-related problems over concrete that impact floor coverings. In addition, it significantly expedites floor installations by eliminating the traditional wait time required for new concrete slabs to reach moisture levels suitable for floor-covering installation.

Planitop® 12 SR

Sulfate-Resistant, Vertical, Overhead and Horizontal Repair Mortar with Silica Fume

Planitop 12 SR is a sulfate-resistant, one-component, shrinkage-compensated, cementitious repair mortar. *Planitop 12 SR* is fiber-reinforced, contains both silica fume and a corrosion inhibitor, and is intended for the repair of vertical, overhead and horizontal concrete surfaces.

Planitop® XS

One-Component, Fast-Setting, Extended-Working-Time, Vertical and Overhead Repair Mortar

Planitop XS is an extended-working-time variation of *Planitop X*. Shrinkage-compensated, fiber-reinforced, polymer-modified and containing a proprietary corrosion inhibitor, *Planitop XS* features *Planitop X*'s outstanding workability and versatility.

Primer SN™

Two-Component, Filled, Epoxy Primer

Primer SN is a two-component, filled, epoxy primer specifically designed to enhance adhesion of cement-based decorative and multilayer flooring, such as MAPEI's *Mapefloor™* products, *Ultratop®* products, *PlaniLevel™* products and *Planitop® EL*.

Primer T™

All-Purpose Primer for Self-Leveling Underlayments

Primer T is a low-VOC, magenta-colored, water-based acrylic primer that enhances the performance and adhesion of self-leveling underlayments (SLUs) on nonporous and porous substrates. Suitable for a wide

variety of substrates, *Primer T* combines excellent versatility with easy, low-odor application.

Primer X™

Fast-Drying, Textured Primer for Nonporous Substrates

Primer X is a fast-drying, high-performance, low-VOC, water-based, acrylic primer. It is textured to enhance the performance and adhesion of self-leveling underlayments over 100%-solids, epoxy moisture barriers and other nonporous substrates.

Ultrabond ECO® 220

Premium Flooring Adhesive

Ultrabond ECO 220 is a high-solids, latex-based adhesive designed specifically for installing carpet and felt-backed vinyl sheet flooring. Its unique formulation is perfectly suited for commercial flooring applications where heavy traffic is expected. *Ultrabond ECO 220* also exhibits an extended working time, making it ideal for the installation of patterned carpets. It may be used in both direct and double glue-down installation methods for carpet.

Ultrabond ECO® 360

Premium, High-Performance Adhesive for Solid Vinyl Sheet, Tile and Plank

Ultrabond ECO 360 is a proprietary, high-performance, wet-lay and pressure-sensitive adhesive designed specifically for installing homogeneous and heterogeneous solid vinyl flooring. With its strong, durable, moisture-resistant and alkali-resistant bond, it is ideal for commercial and institutional applications. *Ultrabond ECO 360* has an excellent open time, develops strength quickly, performs well under rolling loads and resists indentation. Its low volatile organic content makes it ideal for use in occupied buildings such as hospitals and medical centers.

Ultrabond ECO® 373

Universal, Pressure-Sensitive, Multi-Flooring Adhesive

Ultrabond ECO 373 is a super aggressive, pressure-sensitive adhesive that is designed for the installation of a wide variety of resilient flooring types. *Ultrabond ECO 373* has been specifically formulated to provide extended working time and can be applied using a trowel or roller, depending on the level of tack that is required for the flooring that is being installed.

Ultrabond ECO® 575

Premium Wall-Base Adhesive

Ultrabond ECO 575 is a premium wall-base adhesive specifically designed to provide superior bond and impact resistance for rubber, vinyl and carpet wall base. *Ultrabond ECO 575* also has been reformulated to offer even greater grab and wet strength, keeping corners wrapped tight. Its light-colored, water-based, acrylic-polymer formulation won't stain even the whitest wall base.

Ultrabond ECO® 711

Premium, Clear, Thin-Spread VCT Adhesive

Ultrabond ECO 711 is a latex-based adhesive that offers a quick drying time with enhanced grab and slip resistance for vinyl composition tile (VCT) installations. *Ultrabond ECO 711* is translucent when dry, allowing layout lines to be easily seen.

Ultrabond ECO® 811

Universal Carpet Tile Adhesive

Ultrabond ECO 811 is a high-performance, acrylic latex adhesive designed to provide an aggressive tack for installing all types of carpet tile. *Ultrabond ECO 811* provides a secure, releasable adhesive base for standard PVC-backed carpet tile as well as for non-PVC-, polyolefin-, felt- and bituminous-backed carpet tile. It can also be used to bond fiberglass-reinforced vinyl sheet flooring.

Ultrabond ECO® 980

Premium Urethane Adhesive for Hardwood Flooring

Ultrabond ECO 980 is a 100%-solids, one-component, moisture-cured urethane adhesive specifically designed for the installation of domestic and exotic solid and engineered wood flooring, including bamboo.

Ultrabond® G21

Premium, Two-Part, Urethane Flooring Adhesive

Ultrabond G21 is a two-part, reactive adhesive with low volatile organic compounds (VOCs), designed for extreme indoor and outdoor flooring installations. This adhesive aggressively adheres all types of floor coverings to properly prepared metal, asphalt pavement and many other difficult-to-bond-to substrates.

UltraCare® Penetrating Plus SB Stone & Porcelain Tile Sealer

UltraCare Penetrating Plus SB Stone & Porcelain Tile Sealer is a premium, natural-look, solvent-based penetrating sealer that uses VOC-exempt materials and will provide maximum protection against most common stains for all interior and exterior natural stone (marble, limestone, sandstone, slate, granite, travertine, etc.), unglazed porcelain and ceramic tiles, masonry, quarry tiles and cement grout. The product can also be used as a pre-grouting sealer.

UltraCare® Penetrating Plus Stone, Tile & Grout Sealer

UltraCare Penetrating Plus Stone, Tile & Grout Sealer is a premium, natural-look, water-based penetrating sealer that provides maximum protection against most common stains for all interior and exterior natural stone (marble, limestone, sandstone, slate, granite, travertine, etc.), unglazed ceramic tile, masonry and cement grout. The product can also be used as a pre-grouting sealer.

Ultracolor® Plus FA

Rapid-Setting, "All-in-One" Grout Replacement for Sanded and Unsanded Grouts

Ultracolor Plus FA with DropEffect™ technology is an ultra premium, fine-aggregate, fast-setting, polymer-modified, color-consistent, nonshrinking, efflorescence-free grout for joint widths from 1/16" to 3/4" (1.5 to 19 mm). DropEffect reduces surface absorption to help repel water, dirt and grime from penetrating grout joints. *Ultracolor Plus FA* is specially formulated with MAPEI's High-Hydrated Cement Technology (HCT™) to eliminate the common problems related to Portland-cement grout, such as color consistency and efflorescence. Along with offering higher polymer content, HCT reduces absorption and increases stain resistance when compared with standard-performance cement grouts.

Ultracolor® Plus Max

High-Performance, Rapid-Setting Grout with Maximized Color Depth and Color Consistency

Ultracolor Plus Max is an ultra premium, fast-setting, polymer-modified, nonshrinking grout that offers rich and vibrant colors with maximized color depth and color consistency. This fine-aggregate grout can be used for joint widths from 1/16" to 3/4" (1.5 mm to 19 mm). *Ultracolor Plus Max* includes DropEffect™ technology for reduced surface absorption, helping to repel water, dirt and grime from penetrating grout joints. It is also specially formulated with MAPEI's High-Hydrated Cement Technology (HCT™) to provide advantages over traditional grout, such as eliminating efflorescence and increasing stain resistance.

Ultraflex® LFT™

Premium, Large-and-Heavy-Tile Mortar with Polymer

Ultraflex LFT is a premium, non-sag, large-and-heavy-tile mortar and thin-set mortar designed for large-format and heavy tile and stone for interior/exterior floor, wall and countertop installations. This mortar has a high content of unique dry polymer, resulting in excellent adhesion to the substrate and tile. It is formulated with Easy Glide Technology™ for ease of application.

Ultraplan® 1 Plus

High-Performance, Quick-Setting, Self-Leveling Underlayment

Ultraplan 1 Plus is a quick-setting, self-leveling, self-drying underlayment and repair mix for interior concrete and engineer-approved floors. *Ultraplan 1 Plus* has high strength and is abrasion-resistant, able to withstand light foot traffic after 2 to 3 hours and vehicular rubber-wheel traffic after 3 days.

Ultraplan® Extreme 2

Weather-Resistant, High-Compressive-Strength, Self-Leveling Underlayment

Ultraplan Extreme 2 is an advanced hydraulic-cement-based, self-leveling compound designed for fast-track

underlayment applications. It is especially formulated for leveling interior horizontal concrete surfaces where environmental controls are not operational or the building is not enclosed. Once installed, *Ultraplan Extreme 2* is not affected by exposure to intermittent rain exposure after 6 hours or to freezing temperatures after 3 days of curing. Its high compressive strength is designed to allow it to be exposed to traffic as a temporary wear layer until the floor is covered with floor covering. *Ultraplan Extreme 2* has no moisture vapor emission limitations and can be installed without testing on properly prepared concrete substrates. It is the self-leveling compound of choice for use under moisture-controlling adhesive systems and epoxy moisture barriers.

Ultraplan® M20 Plus

Quick-Setting, High-Compressive-Strength Underlayment

Ultraplan M20 Plus is a calcium-aluminate-based, quick-setting, self-leveling underlayment and topping. It is specially formulated for the resurfacing and construction of interior horizontal surfaces as a high-compressive-strength underlayment with maximum resistance to wheel tracking and indentations. *Ultraplan M20 Plus* is suitable for use as a commercial wear topping in warehouse and alternate industrial applications where an exceptional flat and smooth concrete surface is desired.

Ultratop® SP

High-Performance, Polishable, Self-Leveling Topping for a Fine-Aggregate Finish

Ultratop SP is a polishable, self-leveling, cementitious topping that provides a fine-aggregate exposed finish. *Ultratop SP* is engineered for fast-track resurfacing of horizontal wear surfaces.

Get specific with **MAPEI** and get your **CES credits**

We have all the tools to make your learning experience a success. MAPEI's Architectural Education Program provides quality training modules related to system solutions. Our education programs include in-office presentations and on-demand Web access to our AIA registered courses, giving architects the flexibility to earn CEUs online or in-person at their design office.

Visit us in the U.S. at
www.mapei.com/us/tools-for-architects
or in Canada at
www.mapei.com/ca/tools-for-architects.





SYSTEM SOLUTIONS GUIDE

RETAIL AND RESTAURANTS

PR: 8387 MKT: 22-2936 06/23



MAPEI USA
MAPEI Caribe
MAPEI Canada

MAPEI Headquarters of North America

1144 East Newport Center Drive
Deerfield Beach, Florida 33442
1-888-US-MAPEI (1-888-876-2734) /
(954) 246-8888

Technical Services

1-800-992-6273 (U.S. and Puerto Rico)
1-800-361-9309 (Canada)

Customer Service

1-800-42-MAPEI (1-800-426-2734)

Copyright ©2023 by MAPEI Corporation ("MAPEI") and all rights are reserved. All intellectual property rights and other information contained in this document are the exclusive property of MAPEI (or its parent or related companies), unless otherwise noted. No part of this document may be reproduced or transmitted in any form without the prior written consent of MAPEI.

Printed in the USA.

