

# Collège Saint-Alexandre student lounge

Gatineau, QC, Canada



## Project Information

**Project category:**  
Public Buildings/Places

**Year of construction:**  
1850

**Year of MAPEI involvement:**  
2021

**MAPEI coordinator:**  
Justin Lafontaine

**Project owner:**  
Collège Saint-Alexandre de la Gatineau

**MAPEI contractor:**  
Jacques Lamont Ltd.

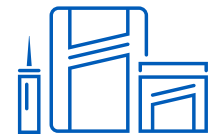
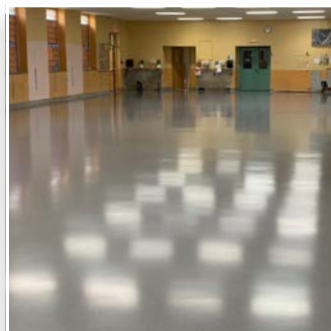
**Architect:**  
Luc Fortin (Fortin Corriveau Architectes)

**Photographer:**  
Justin Lafontaine



## Project Overview

The aging terrazzo floor of the Collège Saint-Alexandre high school's student lounge was in bad shape. Using a fast-track solution from MAPEI's Cementitious & Resin Flooring Systems product line (with an assist from the Concrete Restoration Systems product line), a stylish yet rugged epoxy-resin floor was installed to provide a fresh new look that is built to last.



## Products Used

**Mapecolor™ Finish 54 W/S**  
**Mapecolor I 320 SL Concept**

**Planibond® EBA**

**Planicrete® AC**

**Planiseal® MB**

**Planitop® 18 ES**

**Primer SN™**

**Topcem™ Premix**



# Collège Saint-Alexandre student lounge

Gatineau, QC, Canada

## Teenager-proofing a high school's student lounge

The Collège Saint-Alexandre high school for girls and boys sits proudly by the shore of the majestic Ottawa River, just north of Gatineau, Quebec. To the outside observer, the school looks much the same today as it did at its 1905 founding by Saint-Esprit priests. Looks can be deceiving, of course. The prestigious French-language school has long since dropped its religious affiliation, but not its mission of developing students to become socially engaged, responsible young adults who are able to solve problems through critical thinking.

And, when it came time to do something about the deteriorating floor of the Collège Saint-Alexandre's "Salle Raoul-Blais" student lounge, school officials applied a similar discipline by embracing the modern concept of a seamless, low-VOC-emitting, epoxy-resin flooring system as a replacement for the terrazzo that had been installed some 50 years earlier. But the officials did not arrive at that conclusion entirely on their own.

"When we started this job, I was called in there by the director of the college and the architect to see if we could install ceramic tile over the existing terrazzo," said Justin Lafontaine, MAPEI's Business Development Manager for Eastern Canada. The project would not be that easy, however, and could not possibly be completed over the upcoming summer break.

"There were places it needed to be completely removed," Lafontaine noted. "I suggested the [epoxy-coating product] **Mapefloor I 320 SL Concept** and had a sample put together for the architect – and they fell in love with it."

### MAPEI on the job

To start, the existing terrazzo floor and the sandbed that was beneath it had to be completely removed, right down to the concrete slab at the bottom of the 5,000-square foot (465-m<sup>2</sup>) area. That substrate proved to be weak, so installers from Jacques Lamont Ltd. applied **Planitop 18 ES** high-early-strength, cementitious repair mortar in targeted areas to bring the substrate in line with International Concrete Repair Institute (ICRI) 310.2R guidelines. They then applied a coat of **Planiseal MB** to serve as a surface-consolidating epoxy moisture barrier.

Next, to replace the sandbed, MAPEI had a time-tested solution: **Topcem Premix** accelerated-cure screed mortar with undiluted **Planicrete AC** acrylic latex admixture replacing the mixing water, to provide added durability. It was applied at a thickness of 4" to 5" (10 to 12.7 cm) throughout. That layer required a previous application of **Planibond EBA** to act as a bonding agent.

Once cured, the substrate was ready for the main installation layer, starting with **Primer SN**, a filled, epoxy primer specifically designed to enhance adhesion of cement-based



# Teenager-proofing a high school's student lounge

decorative and multilayer flooring. Next, *Mapefloor I 320 SL Concept* self-leveling epoxy coating, which was tinted light blue, was applied. Finally, ***Mapefloor Finish 54 W/S*** aliphatic polyurethane coating was applied as a protective semi-gloss topcoat. All three products were roller-applied for fast-track installation.

The results were impressive. With 85 years of expertise and product refinement to rely on, MAPEI was able to provide exactly what was needed to deliver a smart-looking floor in short order during the summer school break. "A month and a half and it was all done, ready to open for the next semester," Lafontaine remarked. "It's seamless, easy to maintain, super flat and skid-resistant." (Or, should we say, "teenager-resistant"?)



---

#### **MAPEI Inc.**

2900 Francis-Hughes Avenue  
Laval, Québec H7L 3J5  
(450) 662-1212

#### **Technical Services**

1-800-361-9309 (Canada)

#### **Customer Services**

1-800-42-MAPEI (1-800-426-2734)