



Slush Puppie Centre

Gatineau, QC, Canada



Project Information

Project category:
Sport Facilities

Years of construction:
2020-21

Years of MAPEI involvement:
2020-21

MAPEI coordinator:
Justin Lafontaine

MAPEI distributor:
Prosol Inc.

Project owner:
City of Gatineau and Vision Multisports
Outaouais (VMSO)

Project Manager:
Martin Beaudoin

Main Contractor:
Construction JPL

Flooring Contractor:
Beaudoin Canada

Installer Companies:
Idéal Epoxy (cementitious and resinous
flooring); Jacques Lamont, Ltd. (tile and carpet)

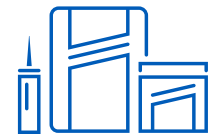
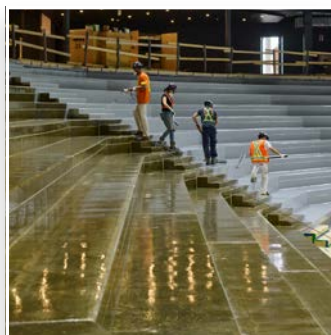
Architect:
Architecture49 Inc.

Photography:
Christian Lalonde (Photolux) and
Justin Lafontaine



Project Overview

The 2020-21 season was a rollercoaster of setbacks for the Gatineau Olympiques major junior hockey team – but as for the construction of the team’s state-of-the-art hockey arena (featuring four full-sized hockey rinks), MAPEI products and know-how helped ensure that everything went as smooth as ice.



Products Used

- Mapecem® Quickpatch**
- Mapecoat™ Universal**
- Mapeflakes™**
- Mapefloor™ CPU/RT**
- Mapefloor CPU/TC**
- Mapefloor DQ**
- Mapefloor Finish 53 W/L**
- Mapefloor Finish 54 W/S**
- Mapefloor I 302 SL**
- Mapefloor I 900**
- MAPEI Ultralite® Mortar**
- Planigrout® 712**
- Planitop® 18 ES**
- Primer SN™**
- Ultrabond ECO® 811**



Slush Puppie Centre

Gatineau, QC, Canada

Four rinks under one roof – A cinch with MAPEI systems

After a 2020-21 hockey season that saw the Quebec Major Junior Hockey League's Gatineau Olympiques playing almost no games on home ice and experiencing one hiccup after another, perhaps it is fitting that the team was able to start the 2021-22 season fresh with Slush Puppie Centre, a spanking new arena with state-of-the-art amenities and training facilities – all under one roof.

With no less than four full-sized ice surfaces (three for community use, figure skating and pickup leagues; the fourth, an amphitheatre with VIP booths and a 4,000-seating capacity for the Olympiques), the freshly completed, 220,000-square-foot (20 439-m²) Slush Puppie Centre has a sizable footprint.

General contractor JPL Construction, sub-contractor Beaudoin Canada, and the city of Gatineau all knew MAPEI well from previous successful projects using MAPEI's Cementitious & Resin Flooring Systems and Tile & Stone Installation Systems products.

"We had the answer for every need," said Justin Lafontaine, MAPEI's Business Development Manager for Eastern Canada. "In recent years, the city of Gatineau and MAPEI have developed a fantastic working relationship built on a number of successful construction and restoration projects, from Maison de la Culture to Fire Station #3; and so for the Slush Puppie Centre, they had us on the spec from the start."

Delivered in September 2021, Lafontaine noted that the project is "by far our largest industrial-flooring systems deployment yet in Canada." It features **Mapefloor I 302 SL** epoxy resin with **Primer SN** and **Mapefloor CPU/RT** polyurethane/cement-based screed for 5,000 square feet (465 m²) of maintenance areas.

MAPEI on the job

Industrial-flooring systems provide durability and a host of possibilities for decorative finishes. Visitors at the new Slush Puppie Centre's community entrance and amphitheater entrance (for the main arena) are greeted with a stylish broadcast of **Mapeflakes** decorative vinyl flakes that are clearly visible through the high-gloss **Mapecoat Universal** epoxy-resin seal coat and binder. Common areas here and throughout the interior were first coated in **Primer SN** and **Mapefloor I 302 SL** as an epoxy-resin basecoat, boasting easy cleanability and good resistance against the abrasives and salts that are commonly tracked in by pedestrian boots in cold Canadian winters. It also provides a highly attractive, slip-resistant finish that is flat and seamless.

Surface preparation

To prepare the concrete slab beforehand, installers from Idéal Epoxy started with **Mapecem Quickpatch** concrete patch to correct imperfections and **Planitop 18 ES** high-early-strength, cementitious



Four rinks under one roof – A cinch with MAPEI systems

repair mortar with a corrosion inhibitor for sloping of the floor around the foot grills in the entrances. They also used **Planigrout 712** nonshrinking, nonmetallic, cement-based grout with a corrosion inhibitor as a protective coat for the steel-column baseplates.

Main arena and stands

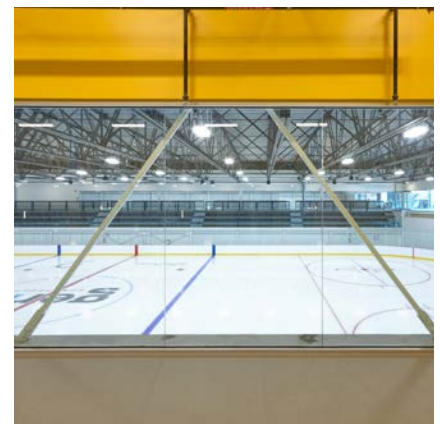
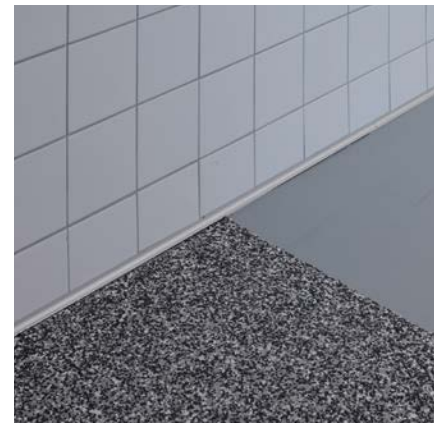
The 4,000-capacity seating area for the amphitheater was built a little differently from the rest of the project, using precast concrete that was cured to a very high density compared with the concrete slabs elsewhere. This required a low-viscosity primer to promote a better bond, so installers went with **Mapefloor I 900** epoxy resin instead of the usual *Primer SN*.

Shane Edwards, MAPEI Canada's Product Line Manager for Industrial Flooring, noted a great benefit of using **Mapefloor I 302 SL**: "Our **Mapefloor I 302 SL** is high-viscosity, but it can still be easily spray-applied with no concern about clogging up the equipment. Some contractors want to dilute the product with solvents for spray application, but we don't recommend it because it can cause issues with the resiliency and color quality of the finished product." And as the crew from Idéal Epoxy found out, such dilution was completely unnecessary. In this case, the crew was able to spray-apply 65,000 square feet (6 039 m²) of **Mapefloor I 302 SL** in a single day, covering the entire vertical and horizontal surfaces for the stands of the main rink.

Maintenance areas

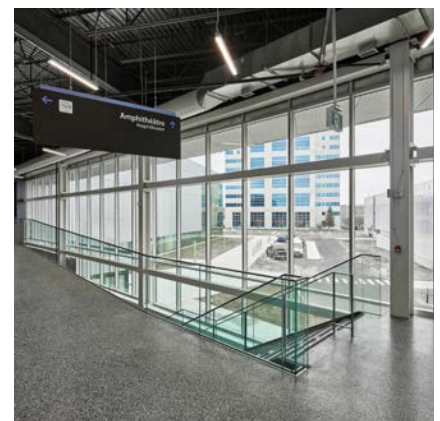
Taking care of four arenas means that the facility sees a lot of traffic from Zambonis (the heavy machines that are used for ice-rink resurfacing, with each weighing up to 7,720 lbs. [3 502 kg] when fully loaded with water). Therefore, an even more rugged solution was needed – enter **Mapefloor CPU/RT**, which features a high level of chemical resistance.

Together with its complementary topcoat **Mapefloor CPU/TC**, **Mapefloor CPU/RT** is formulated to cover industrial floors that are subject to heavy traffic flow, aggressive chemicals and thermal shock, so that made it a natural choice for the flooring in the facility's maintenance areas and service corridors.



One other special consideration was the amount of direct sunlight that many areas of epoxy-resin flooring are subject to, given the floor-to-ceiling, pane-glass front walls spanning the length of the structure's main facade as being a welcoming feature of Architecture49 Inc.'s designs. Specifiers determined that an extra finishing coat would be necessary in these and other areas where heavy foot traffic was expected.

Once again, MAPEI had the answer: **Mapefloor Finish 53 W/L**, where a high-gloss finish was desired, and **Mapefloor Finish 54 W/S** for semi-gloss. These transparent, protective, aliphatic, polyurethane finishing coats are formulated to help maintain the epoxy-resin flooring's high aesthetic for years to come.



Four rinks under one roof – A cinch with MAPEI systems

Tile work, shower rooms and carpet

Installers from Jacques Lamont Ltd. worked with the Green Squared-certified **MAPEI Ultralite Mortar** – a premium, lightweight, thin-set mortar with BioBlock® technology for mold and mildew resistance – for the wall tiling in shower rooms and other wet areas. The floors in these areas were done using *Mapecoat Universal* with **Mapecfloor DQ** decorative quartz and *Mapecfloor Finish 53 W/L*. Installers also used **Ultrabond ECO 811** high-performance, acrylic latex adhesive for installation of the 1,300 yards (1 189 m) of carpet tile in the private loges. As with the majority of other MAPEI products that were used in the Slush Puppie Centre, *MAPEI Ultralite Mortar* and *Ultrabond ECO 811* are Indoor Air Quality Certified as “Indoor Advantage Gold” by SCS Global Services for their low volatile organic compound (VOC) emissions.



Meanwhile, for the Olympiques, 2021 marks 48 years since the team was inaugurated in the Quebec Major Junior Hockey League, where young men ages 16 to 21 vie for the chance to get noticed by pro scouts and reach the National Hockey League someday (such as current NHLers Jean-Gabriel Pageau, Claude Giroux and the Montreal Canadiens' alternate captain, Paul Byron).

As official team sponsors, we at MAPEI Canada wish the Olympiques players much success in their new rink. May the professionalism that went into the Slush Puppie Centre construction inspire the players to reach even greater heights in the future – including a second Memorial Cup banner to accompany the one that the team captured in 1997.

MAPEI Inc.

2900 Francis-Hughes Avenue
Laval, Québec H7L 3J5
(450) 662-1212

Technical Services

1-800-361-9309 (Canada)

Customer Services

1-800-42-MAPEI (1-800-426-2734)