



Unisoya

Saint-Isidore-de-Laprairie, QC, Canada



Project Information

Project category:
Production Facilities

Year of construction:
2019

Year of MAPEI involvement:
2019

MAPEI coordinator:
Alain Pomerleau

Project owner:
Unisoya 1986 Inc.

Contractors:
Restauration Precision / Protec Sol

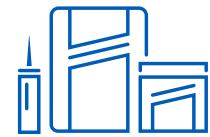
Project manager:
Tony Barone

Photographer:
Olivier Gariépy



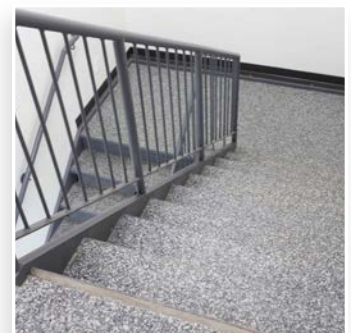
Project Overview

A family-owned tofu business, which needed to expand its operations with a new, modernized production plant, was so impressed by MAPEI's Cementitious & Resin Flooring Systems products that it went a step further – opting for a new, decorative resinous floor for its offices and cafeteria to go with thermal-shock-resistant industrial flooring for the new factory.



Products Used

- Mapecoat™ Universal**
- Mapeflakes™**
- Mapefloor™ CPU/COVE**
- Mapefloor CPU/SB**
- Mapefloor CPU/TC**
- Mapefloor I 302 SL**
- Primer SN™**



Unisoya

Saint-Isidore-de-Laprairie, QC, Canada

MAPEI's industrial flooring helps family operation ramp up production

The Beaulieu family has been growing its own GMO-free soybeans and making them into Unisoya tofu for over 30 years. The company sources its products locally and has recently enjoyed booming business, with evolving consumer attitudes towards its product driving up demand appreciably. In 2019, the company embarked on a new-build factory to double its floorspace and expand production, seeking modernized facilities with a durable floor to withstand the heavy-load industrial equipment – and the chemical and thermal shocks – that such an expansion entailed.

When MAPEI coordinator Alain Pomerleau took the owners on a tour of an existing food-production facility using MAPEI's recently developed *Mapefloor* industrial-flooring systems, they were quickly convinced that it was exactly what they were looking for to cover the new 17,000-square-foot (1 579-m²) concrete slab of the factory floor and logistics areas. But that was not all. Seeing the solution's flexibility to provide a high aesthetic with broadcast *Mapeflakes* decorative vinyl flakes, the owners went a step further and installed the resinous solution in 3,000 square feet (279 m²) of office, stairs and cafeteria space as well.

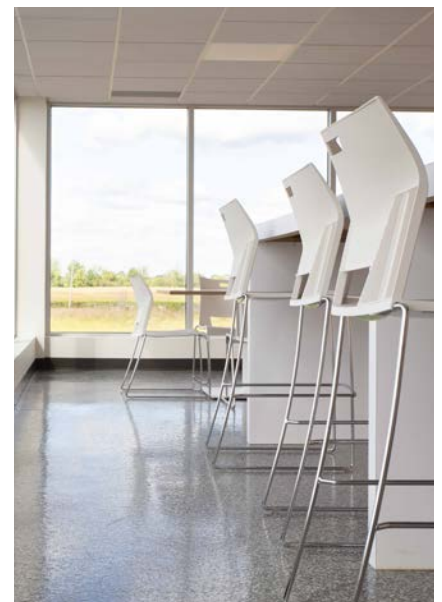
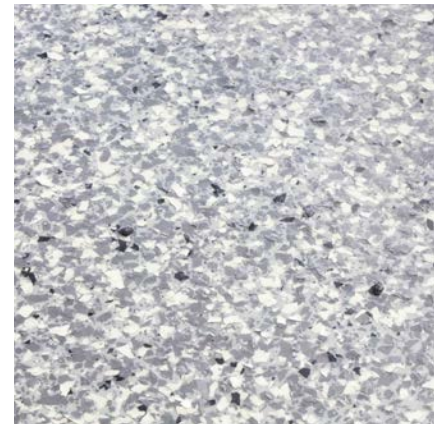
MAPEI on the job

Surface preparation of the new factory floor's concrete slab was the first step. Contractors from Restauration Precision and Protec Sol used "blast-track" shotblasting to bring the slab to a concrete surface profile (CSP) of #4 per International Concrete Repair Institute (ICRI) standards.

With that job complete, the contractors first applied *Primer SN* and then used *Mapefloor CPU/SB* polyurethane/cement-based screed, which features a high level of chemical resistance. It is formulated to cover industrial floors that are subject to medium to heavy traffic flow, aggressive chemicals and thermal shock in compliance with standards applied in the food and beverage industries. Its sister product, *Mapefloor CPU/COVE*, was used for detailing and coving, joint repair and fixing of drains. As a topcoat, *Mapefloor CPU/TC* polyurethane/cement-based coating was applied for a protective finish.

For the non-production areas, such as the cafeteria and stairs (where both a high aesthetic and an easy-maintenance solution was sought), Protec Sol contractors used *Mapefloor I 302 SL* epoxy resin with broadcast decorative *Mapeflakes* to attain surfaces that were flat and seamless. Finally, they added *Mapecoat Universal* high-gloss, epoxy resin, which served as a clear binder in these areas.

Now in full operation, the modernized factory is turning out tofu in quantities that the Beaulieu family previously never experienced. Maintaining the production area has never been easier either, and worker safety is not a problem with a durable, non-slip flooring solution that is specifically tailored for the food and beverage industry. Plus, the glossy decorative flooring in the non-production areas serves notice that this is a company where quality presentation and attention to detail matters.



MAPEI Inc.

2900 Francis-Hughes Avenue
Laval, Québec H7L 3J5
(450) 662-1212

Technical Services

1-800-361-9309 (Canada)

Customer Services

1-800-42-MAPEI (1-800-426-2734)