



FANTASYLAND HOTEL

Fantasyland Hotel lobby renovation

Edmonton, AB, Canada



Project Information

Project category:
Public Buildings – Renovation

Year of construction:
1983

Year of MAPEI involvement:
2022

MAPEI representative:
Brent Johnsen

MAPEI distributor:
Prosol inc. – Edmonton

Project owner:
Triple Five Group

General contractor/installer:
PROTILE Ltd.

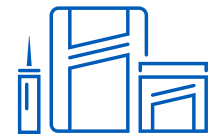
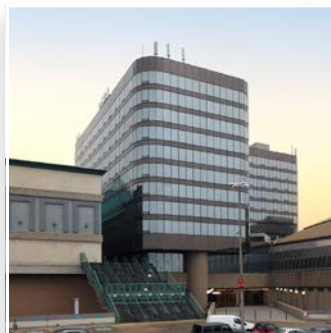
Designer:
West Edmonton Mall

Photographers:
Wiktor Skupinski and Wayne Stephenson



Project Overview

With its 40th anniversary fast approaching, West Edmonton Mall's 4-star Fantasyland Hotel wanted to spruce up its original terrazzo lobby floor by installing a new, precision-cut marble composite tile in a stylized design. Setting products from MAPEI's Tile & Stone Installation Systems line helped achieve a quality installation with a superior look.



Products Used

- Keraflex™ Super**
- Mapecem® Premix**
- Mapeguard® UM**
- Mapesil® T**
- Ultracolor® Plus FA**



Fantasyland Hotel lobby renovation

Edmonton, AB, Canada

MAPEI products enable fantastic new look for Fantasyland Hotel

In 1983, West Edmonton Mall opened Phase II of its expansion that featured the 4-star Fantasyland Hotel as a literal cornerstone on the southwest corner of the 121-acre (489 670-m²) lot. This expansion would make West Edmonton Mall the world's largest shopping mall at the time; 39 years later, the mall sits in sixth place on the list of largest shopping centers, but its attraction for tourists and locals alike has not waned.

With the Fantasyland Hotel approaching its 40th anniversary in 2023, proprietors Triple Five Group embarked on a plan to update the original terrazzo lobby floor with a fresh, new look using precision-cut, laminated, large-format marble composite tile.

MAPEI on the job

After a few years in the design and planning stages, the 5,850-square-foot (543-m²) lobby floor was surveyed and design drawings were put into a CAD file so that all the curved design elements could be waterjet-cut and numbered as to their install locations to mirror the completed ceiling design. MAPEI was consulted for recommendations regarding surface preparation and installation products. Work then began at the site in January 2022, with MAPEI Business Development Manager Brent Johnsen serving as MAPEI's coordinator on the project.

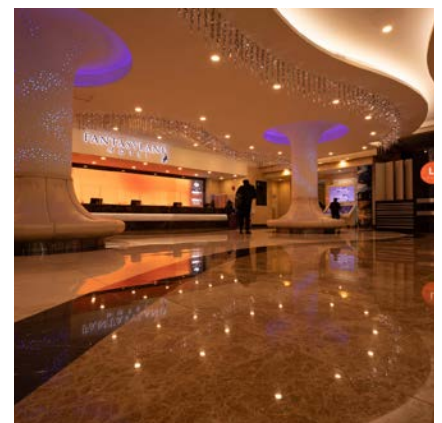
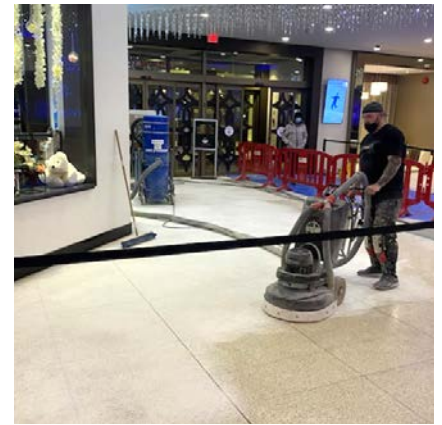
One of the biggest hurdles was the logistics of working through the

constant foot traffic, as the area needed to stay open to customers. Most of the work was done in sections, with pedestrian traffic separated from the cordoned-off work areas. Work was completed in a certain area, left to cure, and then covered and opened to foot traffic before work was started in the next area.

Surface preparation

Waterjet cutting of the tiles was done offsite by Hydrosion Design Ltd. (also in Edmonton). At the same time, installers Wayne Stephensen and Adam Jack from PROTILE Ltd. got underway with floor preparation and diamond-grinding the existing terrazzo, followed by sweeping, mopping and resweeping of the floor space to eliminate dust. In addition, there was some edgework and sloping that needed attention; therefore, the installers turned to **Mapecem Premix**, a fast-setting, high-compressive-strength screed mortar, to fill in gaps and smooth out the surface in those areas.

The next step was the application of **Mapeguard UM** premium-performance, lightweight, uncoupling and crack-isolation underlayment membrane. The unique engineered tri-layered design of **Mapeguard UM** absorbs lateral stress from the substrate without transferring this force to the tile, which maintains exceptional bonds. It was laid down using **Keraflex Super** large-and-heavy-tile mortar with polymer for exceptional grip and for its ability to "wet-out" the membrane.



MAPEI products enable fantastic new look for Fantasyland Hotel

Tile installation

Given its excellent compatibility with both uncoupling membranes and lippage control systems, *Keraflex Super* was also used on top of the membrane for setting the tiles. The mortar is formulated with Easy Glide Technology™ for ease of application and with a consistency that allows adjustability. That adjustability factor was crucial for this job, as nearly every tile was cut to a unique shape and size and had a specifically planned placement that was mapped out at the design stage.

Grouting was completed using polymer-modified **Ultracolor Plus FA** grout. This grout was developed using MAPEI's High-Hydrated Cement Technology (HCT™) to eliminate the common problems related to Portland-cement grout, such as color consistency and efflorescence. Additionally, *Ultracolor Plus FA*'s formulation incorporates DropEffect™ technology, which reduces surface absorption to help repel water, dirt and grime from penetrating grout joints, thus allowing for easier maintenance.

To finish, expansion/movement joints were sealed using **Mapesil T** professional-grade, 100%-silicone sealant, which was matched to three grout colors: #05 Chamois, #115 Truffle and #49 Light Almond.

As an added benefit, all products used in this project were third-party tested and third-party certified for low VOC content and low VOC emissions. As a result, the products achieved Indoor Advantage Gold certification from SCS Global Services to meet California Department of Public Health (CDPH) Standard Method v1.2-2017. The testing of the products is the most stringent type of testing that is available in North America.

In less than four months, and with the lobby accessible to foot traffic the

whole way through, the installation was completed with dazzling results. After 39 years, Fantasyland Hotel guests and West Edmonton Mall denizens alike are greeted with a fresh new look that would not have been possible without the innovative setting materials that MAPEI currently offers.



MAPEI Inc.

2900 Francis-Hughes Avenue
Laval, Québec H7L 3J5
(450) 662-1212

Technical Services

1-800-361-9309 (Canada)

Customer Services

1-800-42-MAPEI (1-800-426-2734)