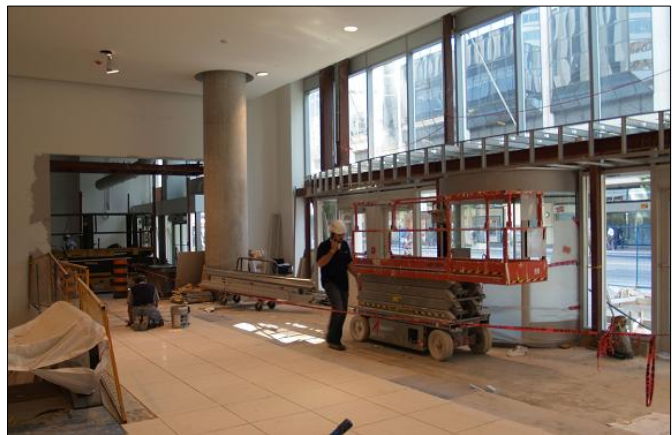


Bay & Dundas to Connect to Eaton Centre

Stretching two full city blocks, The Toronto Eaton Centre is a historical landmark and today one of Canada's best-known retail shopping destinations, attracting approximately 50 million visitors annually. The six-story glass-ceiling structure is reminiscent of the Galleria Vittorio Emmanuele II in Milan. As the Eaton Centre seeks to expand further, a new building is being redeveloped at the corner of Bay & Dundas streets. When the redevelopment is complete, the two buildings will be connected by a covered walkway.

York Marble will be installing 30,000 square feet (2 787 m²) of tile in the first floor of the Bay & Dundas building, as well as in the elevator area in the parking garage. "We're using the *Granirapid*[®] System to install the floor tile," said Glen Restrin, project manager for York Marble. "We're using a quartz composite tile manufactured by Quarella Tile. This tile has become very popular recently; but it is relatively impervious, which makes it difficult for polymer-modified mortars to dry behind it quickly enough for this fast-track setting. Whenever we face these conditions, we always turn to *Granirapid*."

The setting Restrin referred to includes the presence of many trades on the construction site simultaneously. York Marble sees the need for speed in working around other teams as just one more reason to use the dependable *Granirapid* System for high early mechanical strength and superior drying-out characteristics that produce low residual moisture behind tiles after 24 hours.



Before setting the floor tile, the York Marble installers applied *Planipatch Plus*[™] to approximately 5,000 square feet (465 m²) of the flooring to fill uneven spaces and small voids. The team covered 10,000 square feet (929 m²) of the space with *Mapelastic*[™] SM Primer and *Mapelastic*

SM sheet membrane for crack isolation. After installing the tile, they filled the joints with *Keracolor™ S* sanded grout.

The walls adjoining the floor space in Phase I were also covered with tile. For this area, York Marble installed porcelain tile using the *Kerabond/Keralastic™* mortar system and grouted with *Keracolor U* unsanded grout.

“Working in these fast-track settings is becoming more and more common,” said Restrin. “MAPEI products like *Granirapid* help us, and all the other trades, get the work done faster.”