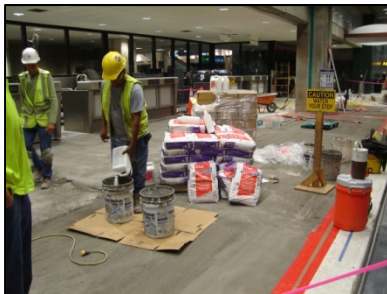


Tampa International Airport – Tampa, Florida, USA Project Summary

The exterior phase of this project was designed by Alfonso Architects of Tampa, Florida, to be a rejuvenation of the existing curbside baggage/check-in area at the Tampa International Airport. The original stone pavers (50,000 square feet – 50% on grade and 50% above grade) had to be carefully removed without disrupting the existing waterproofing membrane. The tile contractor, Standard Tile Company of Sarasota, Florida, was challenged to raise the level of the exterior surface to a an acceptable height that would allow for the installation of a tile system, which was much thinner than the original pavers, while leaving room for the complete MAPEI product assembly (*Mapecem 202* fast-setting cementitious mortar for concrete repairs, *Mapeguard 2* crack isolation membrane, *Ultraflex 3* or *Granirapid* mortar and *Ultracolor Plus* grout) as specified by Alfonso Architects. The installation included a very complex tile pattern encompassing four different sizes of tile cut from two original tile sizes of 6" x 24" and 12" x 24". The tile was Stone Peak's *Quartzite* tile in two colors – "Moon" and "Iron".



The restrooms throughout the main terminal (20 restrooms total) also underwent a complete renovation. Standard Tile co. was contracted to perform the tile installation for this interior phase of the project, too. A new concrete slab was poured for the redesign of the plumbing in the ground floor restrooms. MAPEI was called upon to provide a solution for the installation of porcelain tiles on the new slab almost immediately after the slab was poured. MAPEI supplied *Mapecem 202* as a solution so that the installation would not be affected by moisture concerns. Standard Tile crews installed 12" x 24" *Sissal* honed tile for 12,000 square feet of floors and *Sissal Lopato* tiles for 23,000 square feet of wall space, using *Ultraflex LFT* mortar for large-format tiles over *Mapelastix AquaDefense* waterproofing membrane. The entire 35,000 square feet of interior space was grouted with *Ultracolor Plus* grout.

