

TO THE SIDE. A few photos of the inside of the hotel that has undergone major renovation.
BELOW. The large glass windows in the reception area during works.

Hotel Capoul

The renovation of a symbol of Toulouse

Ten months of work for twenty local companies and a team of more than 150 workers: renovation of the Grand Hotel Capoul in Toulouse was a complex project that had to be carried out to a very tight schedule.

And today the hotel, which has been renamed the Novotel Toulouse Centre Wilson, welcomes its clients in the heart of the city in an ambience which is a magnificent union of the beauty of this historic building and modern design.

A result of the perfect synergy between Hotel Manager Jérôme Gilquain, its owner Francis Farines and the architect Christophe Aubailly.

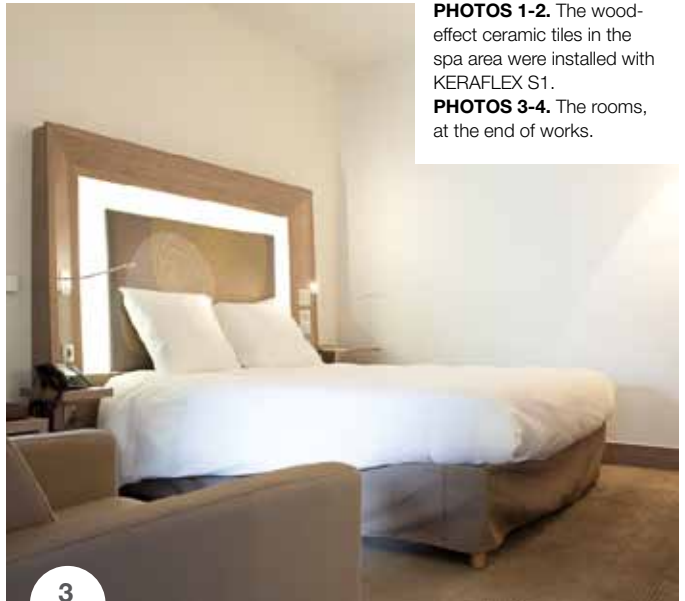
A Hotel Rich with History

Opened in 1930 by the family of the famous tenor Victor Capoul, the hotel was originally a resting place to which its visitors arrived with assiduity. Since then, along with the hotel restaurant bearing the same name, it has been a symbol of the city. When it changed ownership in 2008, it was in need of major renovation work and the building itself needed to be brought up to standard. The request of the manager Jérôme Gilquain was to carry out a major overhaul that combined design and comfort with respect for the character of the original building; quite a challenge for the architect and interior designer Christophe Aubailly, who dedicated almost a whole year on this meticulous, absorbing project, con-





1



3

PHOTOS 1-2. The wood-effect ceramic tiles in the spa area were installed with KERAFLEX S1.

PHOTOS 3-4. The rooms, at the end of works.



2



4

vinced that the Hotel Capoul represented a “treasure trove to be respected and appreciated”. The architect worked with the auspice and support of the French body Monuments de France, especially when working on the internal courtyard and the magnificent iron structure similar in style to the Eiffel Tower which overlooks it. The large Plexiglas windows over the main entrance were replaced with double-glass windows. The structure of the hotel itself was radically modified: the intermediate levels between the various floors were eliminated. This modification, which allowed the internal spaces to be optimised and improved circulation within the hotel, required the number of rooms to be reduced from 142 to 133. The new layout of the spaces, however, also meant that new structures could be created: the mezzanine floor, surrounded by wrought iron balustrades, is now a wellbeing centre with a spa featuring a Hammam steam room, as well as a sauna

and a gymnasium. The ambience of the internal areas has a contemporary, comfortable feel: design furniture and lighting, white leather sofas and armchairs and the use of warm, noble materials such as wood.

Waterproofing and Laying Ceramic Tiles

Thanks to the vast range of solutions in their portfolio and the commitment of their technical and commercial teams, Mapei was chosen by the company that carried out the preparation and waterproofing operations on the substrates and laying ceramic tiles in the spa and bathrooms.

There were a number of technical problems to overcome as work progressed, such as the laying tiling on wooden substrates, protection for the facing walls covered with slabs of gypsum and waterproofing under the ceramic tiles.

The substrates were prepared with PLANO

IN THE SPOTLIGHT ADESILEX P9

It is suitable for interior and exterior bonding of ceramic tiles and mosaics, on floors, walls, ceilings and for spot bonding of insulating materials. ADESILEX P9 is slip resistant with extended open time and highly thixotropic. It hardens without shrinkage. It can contribute up to **4 points** to obtain the **LEED** certification.





5



6

© SAS Grand Hôtel Capoul

PHOTO 5. A photo of the spa, the trump card for the renovated hotel.

PHOTO 6. The wall tiles in the bathrooms were bonded with ADESILEX P9 while the floor tiles were bonded with KERAFLEX.

3 smoothing compound (available on the French market) in combination with PRIMER G on the concrete base layer, and with FIBERPLAN self-levelling smoothing compound in combination with MAPEPRIM SP two-component primer on the floorboards in the rooms. The facing walls with slabs of gypsum were waterproofed with MAPEGUM WPS liquid flexible membrane prior to their installation. Thanks to its excellent resistance to slip, ADESILEX P9 adhesive was chosen to bond the 30x60 cm slabs to the wall. The 32.5x32.5 cm floor tiles were installed with KERAFLEX MAXI S1 adhesive, chosen for its excellent adherence and deformability properties. These properties also convinced the installation company to use the same

adhesive to install the floor tiles with wood effect (22.5x90 cm vitrified porcelain tiles) on the heated floor in the spa. This relaxation area was waterproofed using MAPELASTIC SMART SYSTEME SEL (available on the French market) before laying ceramic tiles. A word from the manager of the hotel Jérôme Gilquain: «There were a number of constraints on this site. We had to wait a long time for the work permits to be granted because the building is under the protection of the Bâtiments de France which looks after our architectural heritage. To reduce the length of time the hotel was closed to a minimum, we had to schedule a particularly intense work programme: ten months for a complete overhaul really is quick! Our Works Director did an excellent job in coordinating all the work squads, and at times there were 150 people on site, even during the Christmas festivities. And what is more, the fact that the hotel is in the centre of the city made getting materials to the site even more difficult».

Work, however, was completed on schedule, to the full of satisfaction of all those concerned. Today's Hotel Capoul has a new look, modern and comfortable, yet with full respect for the old traditions.

Technical data

Novotel Toulouse Centre Wilson, Toulouse, France

Year of Construction: 1903

Period of Intervention: April 2011-January 2012

Intervention by Mapei: supply of products to prepare substrates, for waterproofing work and laying floor and wall ceramic tiles

Client: SAS Grand Hôtel Capoul (Toulouse)

Designer: Atelier d'Architecture Christophe Aubailly (Toulouse)

Works Director: SDTR (Patrick Meyer) (Toulouse)

Laying Company: Yordanov Carrelage (M. Yordanov) (Toulouse)

Mapei Distributor: CCL (Saint-Orens)

Mapei Co-ordinator: Gaétan Dujardin, Mapei France

Mapei Products

Preparation of the substrates:

Mapeprim SP, Fiberplan, Plano 3*

Waterproofing: Mapegum WPS,

Mapelastastic Smart Systeme Sel*

Laying ceramic tiles: Adesilex

P9, Keraflex S1

*Produced and distributed on the French market by Mapei France

For further information see the websites www.mapei.com and www.mapei.fr

This article first appeared in edition No. 36 Mapei&Vous, the magazine published by our subsidiary Mapei France. Our thanks go to the manager of the hotel Jérôme Gilquain and the renovation company Yordanov for their kind help.